

MEADOWSLEA ANGUS SPRING BULL SALE



MEADOWSLEA
ANGUS & SHEEP GENETICS



33 2-year bulls
80 yearling bulls

On-Farm Helmsman Auction
Friday 3rd October 2025, 1pm
and

Online at

www.meadowslea.co.nz

from Sunday Sept 28th



yourbid

Register early online to qualify for
deferred payment option

NZ BREED TRAIT LEADERS FOR MATERNAL AND FERTILITY TRAITS – WITH LONGEVITY TO 14 YRS OF AGE

These two legendary senior sires have had a profound impact on the Meadowslea herd. They have both been NZ Trait leaders for the important fertility and maternal traits of either short days to calving, short gestation length, or milk. You will find them featuring somewhere in the pedigrees of almost every bull in this catalogue, ensuring industry-leading fertility, maternal excellence, and incredible longevity.



MEADOWSLEA F540



TURIHAUA CRUMP E5

FRIDAY 3rd OCTOBER 2025, 1pm, Mt Cook Road, Fairlie

VENDOR:

Meadowslea Genetics Ltd

Phone: 03 685 8027
Mobile: 027 2299 760
Email: giddingsfamily@xtra.co.nz

BOOKING COMPANY

Hazlett:

Callum Dunnett	027 462 0125
Nick Anderson	021 223 7997
Madison Taylor	021 656 851
Hamish Zuppich	027 403 3025
Snow Buckley	027 561 4652
Don Borlase (Dairy)	027 561 4025
Dean Cox (Dairy)	027 561 5007
Greg Shearer (Fairlie)	027 476 6769
George Mannering	027 462 0182



PARTICIPATING COMPANIES:

PGG Wrightson

John McCone	027 229 9375
Simon Eddington	027 590 8612
Callum McDonald	027 433 6443
Joe Higgins	027 431 4041
Greg Uren	027 431 4051
Bruce Dunbar	027 595 6473
Barry Fox (Dairy)	027 439 3317

Carrfields Livestock:

Todd Wells	Southland	027 236 7367
Matt McBain	Southland	027 306 5807

Rural Livestock:

Anthony Cox	Stud Stock	0272 083 071
Donald Cooke		0274 730 854
John Harrison		0272 262 964
Quinten Botha	South Canterbury	0274 730 885
George Coull		0276 855 702
Aaron McCall		027 685 5702

NZ Farmers Livestock

Regan Laughton	027 440 6722
----------------	--------------

TB Status – C10

ATTENTION ALL BUYERS:

Can you please ensure you bring your NAIT Number to the sale.



MEADOWSLEA SPRING BULL SALE



Friday 3rd October 2025 1pm

**Online and On-Farm,
State Highway 8, 5km west of Fairlie
Online Bidding opens with
Video Release Sunday 28th Sept, 7pm**

Sale Format

The sale will be conducted as a Helmsman-style auction, meaning that all lots are for sale simultaneously. This is to allow for the participation of those in attendance, as well as those online. The sale will be hosted on our own yourbid platform and accessed through our website www.meadowslea.co.nz. Prior to the sale, all lots will be filmed and available for viewing up until sale day on the Meadowslea website.

Bulls are available for viewing in the paddock anytime – just call 027 229 9760 to arrange a time.

Registration for those in attendance will be at the on-farm office, where a copy of the conditions of sale will be posted.

Registration for those online will be through the Meadowslea website, where the conditions of sale will also be available.

Buyers will receive a buyer number as they register which will accompany each bid. Buyers registering online will receive a buyer number when they register for the sale which will automatically accompany each bid they place, whether they do so at home on their computer, or through their smart phone while in attendance. Those in attendance may also bid by writing on the supplied bidding cards and handing them in to the on-farm office staff. All live bids and all lots will be visible at all times, both online and on a big screen on-farm.

Online registration is available now and we encourage everyone to visit our website www.meadowslea.co.nz, to register, and then place practice bids on the demonstration lots on the auction page.

Online videos of each lot with accompanying commentary will be released both on our website and on facebook on Sunday Sept 28th at 7pm. This video will include footage of every bull in the

catalogue with comments and background information from the Meadowslea team and will be available for viewing right up until the conclusion of the sale.

Online bidding will be open from 7pm on Sunday Sept 29th until the conclusion of the sale.

On Oct 3rd, Sale Day, the on-farm registration and bidding will open at 11am. **Livestreaming with interactive viewing will commence at 12.30 pm** with a walk through of all the pens, with commentary from the vendors and genetic specialists. Requests to review particular bulls can be made through the web-site chat box or by telephone or text to the vendors or stock agents in attendance. This will continue throughout until the conclusion of the sale.

A live screen on the website will show all lots alongside their current prices and the buyer number of the bidder who holds that lot. On-farm attendees will be able to view on a big screen on site.

Bids will be displayed on a computer or smart phone screen in the following colours

Example:

\$2500 Displayed in **Red** denotes the Vendors reserve and indicates there has been no bid

\$3000 Displayed in **Blue** means an active bid has been received

\$3500 A new Bid has been Received within the last 2 minutes on this lot

\$3500 The holder of the leading bid will have the lot number highlighted in Green on their computer or their smart phone when logged in.

The sale will run until 2pm on Oct 3rd. After this time the sale will conclude once there has been a period of at least 2 minutes without any bid being received on any lot. If another bid is placed on any lot during the 2-minute period, then time is extended and bids can be received on all lots for a further 2 minutes. This process will be repeated until a clear 2 minutes passes without any bids on any lot at which time the sale will conclude.

Final Time will be called clearly by the commentary team who will use their discretion to ensure all bidders are satisfied.

All updates will be posted on our website, as will an up-to-date version of this document.

Rebate Purchasing Commission. 6% purchasing rebate commission will be paid to all nominated buying companies or independent agents introducing clients prior to the sale.

FOREWORD

Meadowslea Angus Stud was established in 1985 with the purchase of capital stock females from Turihaua Station, Gisborne.

The herd today comprises 550 cows run on tussock country west of Fairlie at an altitude of 1500 to 2500 feet. The cows are run entirely under commercial conditions with all heifers calving as 2-year-olds or they are culled. Strong emphasis is placed on cow fertility and ease of calving with any dry cows culled.

Selection criteria is for easy-fleshing, moderate-framed cattle with plenty of meat and adequate fat cover, that will shift and perform in the South Island hill country. Sires used are all NZ-bred, with real emphasis placed on structural soundness, longevity, and fat cover. Over the last 14 years our stud cows have grazed next door on “Berkley Downs” native tussock blocks, and this has further tested their hardiness and constitution.

Sale bulls have spent 120 days on winter feed. The yearlings have been on fodderbeet where they have gained over 1kg / day while the 2-year bulls cruised through the winter on kale. Both mobs were shifted onto grass in the second week of September.

In 2024 we again had a 98% conception rate across heifers and mixed aged cows. With very dry conditions we pulled the bulls out and preg tested a bit early thinking we might get a few extra empties processed, but that didn't happen! We believe it is the strong focus that we place on the maternal and fertility traits that is driving these outstanding results. Furthermore, the performance of our young R2-year heifers is leading the progress within the herd, and you will note that many of the bulls on offer are bred from these outstanding young cattle – either out of the 2-year heifers or bred by yearling bulls.

Strong maternal and fertility traits are the main driver of profitability in any beef herd, and they continue to be the major selection criteria in our breeding programme.

We always keep a selection of very good 2-year-old Angus bulls for this spring sale and this year is no exception, with some particularly meaty, easy-doing bulls on offer, many suited to heifer mating.

The yearlings include some of the second drop, of outstanding sons to be offered, by the \$81,000 Kincardine Rainstorme. R25. These are very exciting prospects and are all heifer mating specialists with genomically enhanced EBV's. Rainstorme has bred exceptionally well and his progeny have the potential to be game-changers for the beef cow herd in NZ. He has exceptional calving ease coupled with very strong early growth while maintaining an unmatched efficient moderate cow size that the industry requires for sustainable and profitable hill country beef production. We have catalogued some top yearlings from all our major bloodlines as well as a good selection of bulls for our Dairy clients.

Meadowslea is a closed herd. All appropriate steps are being taken to ensure biosecurity is maintained at all times for ourselves and our clients.

All bulls tested clear and vaccinated for BVD. Scrotal contents and prepuce palpated with no abnormalities found.

We wish you well with your purchases and as always stand behind them 100%.

Deferred payment option is available – feel free to contact the vendors to discuss.

Disclaimer:

The BREEDPLAN Estimated Breeding Values (EBVs) contained within this sale catalogue were compiled by the Agricultural Business Research Institute (ABRI) from the data supplied by breeders. Neither Angus NZ nor ABRI oversee or audit the collection of this data.

Structural Assessment

The two-year bulls have undergone independent structural assessment by Bill Austin using the Australasian Beef Class system.

Results will be published online at
www.meadowslea.co.nz



20th September 2025

On the 20th September 2025

I palpated the scrotal contents and prepuce of the bulls.

There were no abnormalities found.

The scrotal circumferences were measured and recorded.

Glenda Kellahan (B.V.Sc.)

Accounts Office

Ph: 03 687 9381

Fax: 03 687 9380

Email: office@aorangivet.co.nz

PO Box 4013,

Highfield, Timaru

Geraldine

Veterinary Centre

G.K. Kellahan B.V.Sc.

A.D. McCullough B.V.Sc

27 Wilson Street, Geraldine

Ph: 03 693 1163

Fax: 03 693 1161

Fairlie

Veterinary Centre

Allandale Road, Fairlie

PO Box 26, Fairlie

Ph: 03 685 8407

Fax: 03 685 8904

Highfield

Veterinary Centre

B.M. Gregor B.V.Sc.

G.A. Gregor V.S.

S.R. Newmarch B.Sc, B.V.Sc.

265 Otupua Road, Timaru

PO Box 4013, Highfield

Timaru

Ph: 03 684 5646

Fax: 03 688 4397

Aorangi Vets - Fairlie

"Your Animals Our Expertise"

**Your first choice of vets in the Mackenzie District for all
your animal health requirements.**

Phone 03 685-8407

ANGUS NZ BREED AVERAGE EBVS FOR 2023 BORN CALVES

CED	DTRS	GL	BW	200	400	600	MCW	Milk
+1.7	+1.3	-4.1	+4.2	+42	+79	+101	+91	+14

SS	DC	CW	EMA	Rib Fat	Rump	RBY (%)	IMF%
+2.1	-4	+49	+3.2	+1.2	+1.4	+0.3	+1

EBV tables in this catalogue represent the top ■ 25% and ■ 50% for each trait.

INDEXES

SR

+\$ 117

HD

+\$ 105

Downlands Deer & **STUDSTOCK**

DEDICATED TO WORKING AS A TEAM



CONTACT: KRIS ORANGE
TELEPHONE 03 693 8013
MOBILE 021 322 622

NZ Stud Stock Specialists



Insurance

Livestock

Agronomy

Funding

Procurement

We are a business built on the belief that people come first

Our commitment to you is to provide quality advice
and to optimise value for you at every opportunity.
Give us a call and we'll prove it.

-
- › Hamish Zuppich - 027 403 3025
 - › Wayne Andrews - 027 484 8232
 - › Callum Dunnett - 027 462 0126
 - › Nick Anderson - 021 223 7997
 - › Snow Buckley - 027 561 4652
 - › Don Borlase - 027 561 4025

Use this table as a guide to compare individual animals with the current genetic level of the breed.

SEPTEMBER 2025 TRANSTASMAN ANGUS CATTLE EVALUATION PERCENTILE BAND FOR ALL 2023 - BORN ANIMALS																			
Calv-Ease				Birth				Growth				Fertility				Carcase			
Dir	Dtrs	GL	Bwt	200	400	600	Mwt	Milk	SS	cm	days	kg	Cwt	EMA	Rib	P8	RBV	IMF	SRI
%				kg				mm				%				\$			
Top 1%	+10.2	+9.1	-9.7	-0.1	+63	+112	+146	+150	+27	+4.6	-8	+85	+11.0	+5.4	+6.8	+1.8	+4.2	+190	+213
Top 5%	+8.4	+7.2	-7.8	+1.3	+57	+102	+132	+131	+23	+3.8	-7	+74	+8.4	+4.0	+5.0	+1.3	+3.1	+166	+180
Top 10%	+7.3	+6.1	-6.9	+1.9	+53	+96	+125	+122	+21	+3.4	-6	+69	+7.2	+3.4	+4.1	+1.1	+2.6	+153	+165
Top 20%	+5.6	+4.6	-5.9	+2.7	+49	+90	+117	+111	+19	+2.9	-5	+62	+5.7	+2.6	+3.1	+0.8	+2.0	+140	+147
Top 30%	+4.3	+3.5	-5.1	+3.3	+47	+86	+111	+103	+17	+2.6	-5	+57	+4.7	+2.1	+2.4	+0.6	+1.5	+131	+135
Top 40%	+3.2	+2.5	-4.6	+3.8	+44	+82	+106	+97	+16	+2.3	-5	+53	+3.9	+1.6	+1.9	+0.5	+1.2	+123	+125
Top 50%	+2.1	+1.6	-4.1	+4.2	+42	+79	+101	+91	+14	+2.1	-4	+49	+3.1	+1.2	+1.4	+0.4	+0.9	+116	+116
Top 60%	+1.0	+0.6	-3.6	+4.6	+40	+76	+97	+85	+13	+1.8	-4	+46	+2.4	+0.8	+0.9	+0.2	+0.6	+109	+108
Top 70%	-0.3	-0.6	-3.0	+5.1	+38	+72	+92	+78	+12	+1.6	-3	+42	+1.7	+0.4	+0.4	+0.0	+0.3	+102	+98
Top 80%	-1.8	-1.9	-2.4	+5.6	+35	+68	+86	+71	+10	+1.3	-3	+37	+0.7	-0.1	-0.3	-0.2	-0.1	+93	+85
Top 90%	-4.3	-3.9	-1.4	+6.4	+31	+62	+78	+60	+8	+0.8	-2	+30	-0.6	-0.9	-1.4	-0.5	-0.6	+80	+68
Top 95%	-6.6	-5.6	-0.4	+7.0	+28	+57	+71	+51	+6	+0.4	-2	+24	-1.7	-1.6	-2.3	-0.7	-1.0	+69	+54
Top 99%	-11.7	-9.7	+1.4	+8.3	+21	+47	+56	+32	+3	-0.2	-1	+11	-3.9	-2.9	-4.0	-1.2	-1.9	+47	+29



2 YEAR OLD ANGUS BULLS

Lot: 1 MEADOWSLEA U275 ^{PV}

Birth Date: 20/09/2023 ID No: 19134023275

MEADOWSLEA M429

MEADOWSLEA R646 ^{PV}

MEADOWSLEA M542

MEADOWSLEA L226 ^{SV}

MEADOWSLEA P516 ^{SV}

MEADOWSLEA M546

INDEXES	
SR	HD
+\$120	+\$102

SEPTEMBER 2025 BREEDPLAN								
	CED	DTRS	GL	BW	200	400	600	MCW
EBV	+1.2	+1.8	-5.6	+2.5	+37	+82	+110	+98
Acc	63%	52%	80%	82%	82%	80%	81%	78%
Milk	SS	DC	CW	EMA	Rib Fat	Rump	RBV %	IMF %
+20	+4	-6	+41	-3.7	+3.9	+3.1	-1	+3.2
73%	78%	45%	69%	68%	69%	69%	62%	72%

Comments: We kick of the 2025 Spring offering with this outstanding son of R646 who has been breeding very well for us. U275 has huge volume and capacity, is terrifically wide across the loin, has a strong top and a deep hind quarter. He has a great coat, strong head and bone, and is an impressive bull in every way! This fellow was used over adult cows late in the mating season and did plenty of work, so we decided to hold him back for this sale. He has an incredible growth curve with strong growth following a very safe low birthweight, with good calving ease and short gestation. Massive scrotal EBV indicates early maturity and fertility, he has big fats and look at that IMF figure! This is a top bull - have a very close look!

Purchaser:	Price: \$
-------------------	------------------

Lot: 2 MEADOWSLEA U336 ^{PV}

Birth Date: 24/09/2023 ID No: 19134023336

MEADOWSLEA M429

MEADOWSLEA R646 ^{PV}

MEADOWSLEA M542

TURIHAUA CRUMP E5 ^{SV}

MEADOWSLEA N196

MEADOWSLEA E426

INDEXES	
SR	HD
+\$148	+\$89

SEPTEMBER 2025 BREEDPLAN								
	CED	DTRS	GL	BW	200	400	600	MCW
EBV	-1.9	+0.4	-3.2	+5.2	+37	+70	+99	+91
Acc	65%	56%	81%	82%	83%	81%	81%	79%
Milk	SS	DC	CW	EMA	Rib Fat	Rump	RBV %	IMF %
+16	+2.2	-8	+30	+1.8	+3	+2.8	+0.9	-1.4
74%	79%	48%	71%	70%	71%	71%	64%	74%

Comments: Another very similar R646 son with the same length, depth and capacity. A top bull with the same strong head and jaw R646 consistently leaves. This is another bull who had a busy mating season, being used to follow up AI in the R2 age group. Dam was also the mother of T223 who has several sons in the yearling draft, and grand dam was the mother of retained sire J670. Strong growth, exceptional short days to calving, and good fats all contribute to a very impressive self-replacing index!

Purchaser:	Price: \$
-------------------	------------------

2 YEAR OLD ANGUS BULLS

Lot: 3 MEADOWSLEA U597 ^{PV}

Birth Date: 31/10/2023 ID No: 19134023597

TAIMATE LAZARUS L12 ^{PV}

MEADOWSLEA P565 ^{SV}

MEADOWSLEA G943

MEADOWSLEA K890 ^{DV}

MEADOWSLEA N110

MEADOWSLEA H118

INDEXES	
SR	HD
+\$103	+\$92

SEPTEMBER 2025 BREEDPLAN								
	CED	DTRS	GL	BW	200	400	600	MCW
EBV	-0.4	+3.7	-6.5	+5.4	+37	+78	+95	+104
Acc	65%	55%	81%	82%	82%	81%	81%	78%
Milk	SS	DC	CW	EMA	Rib Fat	Rump	RBV %	IMF %
+16	+2	-5	+45	+0.8	+0.3	+0	+0.6	-0.4
73%	79%	47%	70%	69%	70%	70%	63%	73%

Comments: Great head and outlook to this deep, thick Lazarus grandson with a powerful backend. One of the last calves born in 2024 he has caught up incredibly well and is still well under 2 years old! Grand-dam H118 was still going in the herd until age 12. Short gestation is coupled with plenty of growth and short days to calving.

Purchaser:	Price: \$
------------	-----------

Lot: 4 MEADOWSLEA U119 ^{PV}

Birth Date: 06/09/2023 ID No: 19134023119

RANGATIRA COMMODORE 13-19

RANGATIRA 16209 ^{SV}

KAHARAU 09-8703

MEADOWSLEA Q524 ^{PV}

MEADOWSLEA S266 ^{PV}

MEADOWSLEA K741

INDEXES	
SR	HD
+\$82	+\$91

SEPTEMBER 2025 BREEDPLAN								
	CED	DTRS	GL	BW	200	400	600	MCW
EBV	+0.3	+1.8	-4.1	+3.8	+30	+59	+83	+96
Acc	49%	37%	56%	66%	70%	72%	73%	68%
Milk	SS	DC	CW	EMA	Rib Fat	Rump	RBV %	IMF %
+17	+1.7	-4	+22	+0.5	+1.8	+2.5	+1	-1.1
54%	74%	39%	61%	57%	60%	60%	55%	55%

Comments: A deep bodied direct son of old Rangatira 16209, who was used in the AI over heifers that year. Very sound, as we'd expect of that breeding, with clean shoulders, terrific head and bone, great volume and capacity. Maternal grandsire Q524 was a top bull used over adult cows and sold at Lot 1 in the 2021 bull sale to Rocky Point Station.

Purchaser:	Price: \$
------------	-----------

2 YEAR OLD ANGUS BULLS

Lot: 5 MEADOWSLEA U522 ^{PV}

Birth Date: 10/10/2023 **ID No:** 19134023522

MEADOWSLEA MEAT MACHINE G914 ^{SV}

MEADOWSLEA R818 ^{PV}

MEADOWSLEA N108

MEADOWSLEA K919

MEADOWSLEA M643

MEADOWSLEA K796

INDEXES

SR HD

+\$125 +\$87

SEPTEMBER 2025 BREEDPLAN

	CED	DTRS	GL	BW	200	400	600	MCW
EBV	-1.1	-1.5	-3.4	+4.3	+34	+68	+82	+56
Acc	57%	45%	63%	75%	72%	72%	70%	67%
Milk	SS	DC	CW	EMA	Rib Fat	Rump	RBV %	IMF %
+15	+3.2	-4	+35	+2.6	+2.7	+3.7	+0.4	+0.6
60%	75%	41%	60%	58%	61%	60%	56%	59%

Comments: This is a very sound, well-made R818 son here who we used first choice over one of our own heifer mobs. He is very wide over the loin with strong foot and bone, clean shoulders, balance, and style. Sire R818 is the Meat Machine son purchased by Jade Park Angus in Australia. Dam M643 has bred a couple of other sale bulls already and will feature in our 2025 female sale as an R10yr. U522 has moderate birthweight, big scrotal size, and the strong fats R818 is renowned for.

Purchaser:

Price: \$

Lot: 6 MEADOWSLEA U488 ^{PV}

Birth Date: 06/10/2023 **ID No:** 19134023488

RANGATIRA 13-38

MEADOWSLEA R650 ^{PV}

MEADOWSLEA H117 ^{SV}

MEADOWSLEA J479

MEADOWSLEA N477

MEADOWSLEA K020

INDEXES

SR HD

+\$91 +\$64

SEPTEMBER 2025 BREEDPLAN

	CED	DTRS	GL	BW	200	400	600	MCW
EBV	-5.8	-5	-1.3	+6.6	+31	+60	+80	+61
Acc	55%	45%	64%	75%	71%	72%	75%	69%
Milk	SS	DC	CW	EMA	Rib Fat	Rump	RBV %	IMF %
+11	+2.3	-3	+27	-0.9	+1.4	+2.6	+0.1	+1.5
61%	74%	41%	62%	57%	60%	60%	55%	61%

Comments: A grandson of the \$100,000 Rangatira 13-38 up next. This bull is tremendously well fleshed with an excellent hind quarter, balance and a stylish pullup. He has positive fats and some IMF coming through from the great H117 cow. Mother N477 is also the grand dam of U393, sold for stud to North West Angus in the June sale.

Purchaser:

Price: \$

2 YEAR OLD ANGUS BULLS

Lot: 7 MEADOWSLEA U434 ^{PV}

Birth Date: 30/09/2023 **ID No:** 19134023434

TURIHAUA TORPEDO M27 ^{SV}

TURIHAUA TORNADO Q336 ^{PV}

TURIHAUA L112

MEADOWSLEA K886

MEADOWSLEA M478

MEADOWSLEA K821

INDEXES	
SR	HD
+\$127	+\$88

SEPTEMBER 2025 BREEDPLAN								
	CED	DTRS	GL	BW	200	400	600	MCW
EBV	+0.3	+2.5	-3.6	+3.9	+26	+58	+74	+71
Acc	55%	45%	61%	75%	71%	72%	70%	67%
Milk	SS	DC	CW	EMA	Rib Fat	Rump	RBV %	IMF %
+8	+3.2	-5	+17	+2.6	+2.1	+1.6	+0.8	+0.5
61%	74%	43%	60%	58%	61%	61%	56%	61%

Comments: Lovely moderate, deep, Tornado son to lead in this pen of thick, chunky bulls. Great coat, strong head and bone, and a meaty hindquarter. He has low birthweight with impressive fertility, strong fats, and a good index. He was used alongside T413 to mate a mob of yearling heifers last spring. These Tornado sons have such class and quality about them!

Purchaser:	Price: \$
-------------------	------------------

Lot: 8 MEADOWSLEA U439 ^{PV}

Birth Date: 30/09/2023 **ID No:** 19134023439

TURIHAUA CRUMP E5 ^{SV}

MEADOWSLEA N166 ^{SV}

MEADOWSLEA G922 ^{SV}

MEADOWSLEA P674 ^{SV}

MEADOWSLEA R642 ^{PV}

MEADOWSLEA P860 ^{SV}

INDEXES	
SR	HD
+\$185	+\$55

SEPTEMBER 2025 BREEDPLAN								
	CED	DTRS	GL	BW	200	400	600	MCW
EBV	-7.5	-2.4	-1.4	+4.7	+27	+56	+62	+28
Acc	65%	55%	81%	82%	83%	81%	81%	79%
Milk	SS	DC	CW	EMA	Rib Fat	Rump	RBV %	IMF %
+22	+1.2	-9	+23	+8.6	+4.5	+5.5	+1.4	-1.7
73%	79%	50%	70%	70%	70%	71%	64%	73%

Comments: Another moderate, deep, well fleshed bull exceptional width across the top, a deep flank, and another strong hindquarter. N166 certainly leaves his stamp and sire of dam P674 is really breeding on for us. U439 was left on the hill at weaning and turned up when the cows came down before calving so he has done incredibly well just to be here! Exceptional maternal fertility – that days to calving figure is as good as you'll see in a 2yr bull – and massive muscle and fat contribute to an incredible index there!

Purchaser:	Price: \$
-------------------	------------------



FMG
Advice & Insurance

BULL-PROOF

YOUR ASSETS AGAINST RURAL THEFT.

Theft and burglaries occur more often than you might think, and the number of theft claims is increasing.

Over the last five years we have paid \$51 million in theft claims - including \$715k in fuel alone, that's doubled since 2020 and equates to over 385,000 litres of diesel.*

We have teamed up with NZ Police to create a Rural Crime Prevention Guide to help prevent theft and burglaries at your rural property – find out more at fmg.co.nz/rural-theft

We're here for the good of the country.

*FMG Data 2020 to 2024

2 YEAR OLD ANGUS BULLS

Lot: 9 MEADOWSLEA U133 ^{PV}

Birth Date: 10/09/2023 **ID No:** 19134023133

BASIN RAINMAKER 4404 ^{PV}

KINCARDINE RAINSTORME R25 ^{PV}

KINCARDINE 17-759

MEADOWSLEA P565 ^{SV}

MEADOWSLEA S121 ^{PV}

MEADOWSLEA Q491 ^{PV}

INDEXES	
SR	HD
+\$140	+\$112

SEPTEMBER 2025 BREEDPLAN								
	CED	DTRS	GL	BW	200	400	600	MCW
EBV	+6.7	+2.5	-2.3	+2.7	+35	+64	+67	+20
Acc	65%	53%	81%	82%	83%	81%	81%	78%
Milk	SS	DC	CW	EMA	Rib Fat	Rump	RBV %	IMF %
+22	+3.7	-4	+26	+4.2	+0.7	-0.5	+1.4	-1.1
72%	79%	42%	69%	68%	69%	70%	61%	72%

Comments: A Rainstorme son up next - we thought we'd better keep one for the spring! Nice up standing bull with Rainstorme's typical soft fleshing showing depth of body, balance and style. Terrific heifer mating figures with impressive calving ease and low birthweight. Together with an exceptionally efficient mature cow weight, big milk, massive scrotal and some muscle this generates another very good self-replacing index!

Purchaser:	Price: \$
-------------------	------------------

Lot: 10 MEADOWSLEA U185 ^{PV}

Birth Date: 14/09/2023 **ID No:** 19134023185

TURIHAUA CRUMP E5 ^{SV}

MEADOWSLEA N166 ^{SV}

MEADOWSLEA G922 ^{SV}

MEADOWSLEA M564 ^{SV}

MEADOWSLEA Q109 ^{PV}

MEADOWSLEA N120

INDEXES	
SR	HD
+\$121	+\$95

SEPTEMBER 2025 BREEDPLAN								
	CED	DTRS	GL	BW	200	400	600	MCW
EBV	-0.7	+6.1	-6.8	+4.5	+33	+76	+95	+94
Acc	66%	55%	82%	82%	83%	81%	81%	78%
Milk	SS	DC	CW	EMA	Rib Fat	Rump	RBV %	IMF %
+16	+1.6	-4	+35	+7.9	+4.5	+2.7	+0.8	+0.2
74%	79%	50%	70%	70%	70%	71%	64%	74%

Comments: Another very well balanced N166 son with a deep flank, clean shoulders, balance and style. With his moderate birthweight, massive EMA and easy-doing fats you'll see why we used him over adult cows here at Meadowslea. Mother Q109 also bred S139, sold for stud to Tarangower Angus in June 2023 – she is a daughter of our high performance M564 going back to the great G1000 cow where all that muscle has come from!

Purchaser:	Price: \$
-------------------	------------------

2 YEAR OLD ANGUS BULLS

Lot: 11 MEADOWSLEA U614 PV

Birth Date: 15/11/2023 ID No: 19134023614

TURIHAUA APOLLO L383
TURIHAUA JUPITER Q353 PV
TURIHAUA L84
MEADOWSLEA M452
MEADOWSLEA Q509 PV
MEADOWSLEA J430

INDEXES	
SR	HD
+\$145	+\$96

SEPTEMBER 2025 BREEDPLAN								
	CED	DTRS	GL	BW	200	400	600	MCW
EBV	+0.9	+1.7	-3.4	+5	+34	+68	+85	+68
Acc	56%	44%	61%	69%	69%	70%	68%	67%
Milk	SS	DC	CW	EMA	Rib Fat	Rump	RBV %	IMF %
+13	+1.9	-6	+33	+2.8	+1.8	+2.6	+0.7	-0.1
59%	63%	41%	59%	58%	60%	60%	55%	60%

Comments: Nice thick set, sound type of bull with good muscling, some style and balance. Turihaua Jupiter has been breeding very well. The all-important days-to-calving figure is short which reflects maternal fertility and with a nice balance of figures drives that impressive index. Goes back to the \$100,000 Rangatira 13-38 on the dam side.

Purchaser:	Price: \$
------------	-----------

Lot: 12 MEADOWSLEA U175 PV

Birth Date: 13/09/2023 ID No: 19134023175

RANGATIRA 16209 SV
MEADOWSLEA Q178 PV
MEADOWSLEA M475
MEADOWSLEA M564 SV
MEADOWSLEA R810 PV
MEADOWSLEA H274

INDEXES	
SR	HD
+\$128	+\$71

SEPTEMBER 2025 BREEDPLAN								
	CED	DTRS	GL	BW	200	400	600	MCW
EBV	-4.3	-2.7	-3.6	+4	+33	+65	+83	+85
Acc	57%	47%	68%	75%	71%	70%	69%	68%
Milk	SS	DC	CW	EMA	Rib Fat	Rump	RBV %	IMF %
+7	+2.3	-6	+17	+0.2	+3.5	+3.4	-0.3	+1.7
61%	70%	43%	60%	59%	62%	61%	56%	62%

Comments: The only Q178 in this catalogue - anyone who follows our cattle will have seen how well he is breeding! A very deep, thick, square bull with a top back end. He has a low birthweight suitable for heifers with short days to calving, big fats, and some IMF as well! Another bull going back to M564 and the great G1000 cow. Dam R810 was transferred in the 2024 female sale, while grand-dam H274 bred top sale bulls to Flagstaff Station and Alan Oldham, as well as being the grand-dam of Q223, transferred to Riverlands J Angus where he has really clicked well!

Purchaser:	Price: \$
------------	-----------

2 YEAR OLD ANGUS BULLS

Lot: 13 MEADOWSLEA U602^{PV}

Birth Date: 04/11/2023 **ID No:** 19134023602

TIMPERLEA QUAIN 763^{PV}

MEADOWSLEA S501^{SV}

MEADOWSLEA Q429^{PV}

TURIHAUA LOYALTY L44

MEADOWSLEA S310^{PV}

MEADOWSLEA N142

INDEXES	
SR	HD
+\$150	+\$79

SEPTEMBER 2025 BREEDPLAN								
	CED	DTRS	GL	BW	200	400	600	MCW
EBV	-1.6	+0.7	-2.4	+5.4	+37	+66	+76	+57
Acc	48%	38%	52%	71%	66%	68%	69%	63%
Milk	SS	DC	CW	EMA	Rib Fat	Rump	RBV %	IMF %
+8	+0.7	-6	+28	-0.4	+3.1	+3.7	-0.5	+1.2
48%	71%	35%	56%	51%	55%	54%	50%	51%

Comments: Nicely balanced, upstanding bull with clean shoulders, a good deep back end, great head and bone. Some different bloodlines here with Lazarus and Chisum featuring on the pedigree. Short days to calving, a good low mature cow weight under the 400-day, and some fats and IMF give an impressive dataset as reflected in another very sharp self-replacing index.

Purchaser:	Price: \$
-------------------	------------------

Lot: 14 MEADOWSLEA U396^{PV}

Birth Date: 27/09/2023 **ID No:** 19134023396

DANDALOO ADMIRAL 741

KAHARAU COBRA 10-546^{SV}

KAHARAU 07-8134

MEADOWSLEA L219

MEADOWSLEA N219

MEADOWSLEA F756

INDEXES	
SR	HD
+\$146	+\$95

SEPTEMBER 2025 BREEDPLAN								
	CED	DTRS	GL	BW	200	400	600	MCW
EBV	-0.4	-1.7	-1.3	+4.1	+39	+69	+91	+88
Acc	67%	59%	82%	82%	83%	81%	81%	79%
Milk	SS	DC	CW	EMA	Rib Fat	Rump	RBV %	IMF %
+13	+2.4	-6	+34	+1.4	+3.1	+5.7	+0.1	+1.5
75%	79%	48%	71%	70%	71%	71%	65%	74%

Comments: Another very well flesh bull, deep, thick, strong head & bone, very good back end. We pulled some Cobra semen out of the tank and he bred a good one here! Low birthweight followed by strong growth, scrotal, short days to calving, massive fats and some IMF a top index again! Mother also bred lot 54 in the yearling catalogue of this sale.

Purchaser:	Price: \$
-------------------	------------------

2 YEAR OLD ANGUS BULLS

Lot: 15 MEADOWSLEA U598 PV

Birth Date: 01/11/2023 ID No: 19134023598

TAIMATE LAZARUS L12 PV
MEADOWSLEA P565 SV
MEADOWSLEA G943
MEADOWSLEA F540
MEADOWSLEA K754 SV
MEADOWSLEA C1015

INDEXES	
SR	HD
+\$115	+\$89

SEPTEMBER 2025 BREEDPLAN								
	CED	DTRS	GL	BW	200	400	600	MCW
EBV	+1.3	+1.2	-6.6	+3.5	+30	+62	+72	+58
Acc	66%	57%	81%	82%	83%	81%	82%	79%
Milk	SS	DC	CW	EMA	Rib Fat	Rump	RBV %	IMF %
+9	+3.7	-4	+24	+1	-0.5	-0.5	+0.2	+1.2
75%	79%	50%	70%	70%	70%	71%	64%	73%

Comments: A clean shouldered, well balanced, compact bull good with a good backend and a deep, thick body. Goes back to both Lazarus and F540, with dam K754 being a top cow sold in the 2024 female sale as a 10-year-old. Low birthweight makes him very suitable for heifer mating and his scrotal size is impressive.

Purchaser:	Price: \$
------------	-----------

Lot: 16 MEADOWSLEA U516 PV

Birth Date: 09/10/2023 ID No: 19134023516

RANGATIRA 13-38
MEADOWSLEA R650 PV
MEADOWSLEA H117 SV
MEADOWSLEA N141
MEADOWSLEA Q234 PV
MEADOWSLEA J576

INDEXES	
SR	HD
+\$108	+\$74

SEPTEMBER 2025 BREEDPLAN								
	CED	DTRS	GL	BW	200	400	600	MCW
EBV	-2.4	-0.2	-3.2	+5.8	+29	+58	+68	+40
Acc	54%	44%	62%	75%	71%	72%	74%	69%
Milk	SS	DC	CW	EMA	Rib Fat	Rump	RBV %	IMF %
+14	+2	-4	+29	-0.1	+2.4	+3.3	+0	+1.2
59%	74%	40%	61%	56%	60%	59%	54%	59%

Comments: Another compact, easy fleshing bull with powerful head and bone. R650 was a son of the great Rangatira 13-38 and he goes back to Braveheart on the dam side. He has those crucial easy-doing fats with some IMF as well so the progeny should prime up well. This bull also has a maternal half-brother in the sale, this time at lot 46, and grand dam bred a top bull sold at lot 7 to Island Bay in the June 2025 sale.

Purchaser:	Price: \$
------------	-----------

2 YEAR OLD ANGUS BULLS

Lot: 17 MEADOWSLEA U567 ^{PV}

Birth Date: 17/10/2023 ID No: 19134023567

MEADOWSLEA L226 ^{SV}

MEADOWSLEA S420 ^{PV}

MEADOWSLEA J678

MEADOWSLEA N166 ^{SV}

MEADOWSLEA R654 ^{PV}

MEADOWSLEA N438

INDEXES	
SR	HD
+\$124	+\$85

SEPTEMBER 2025 BREEDPLAN								
	CED	DTRS	GL	BW	200	400	600	MCW
EBV	+0.5	+1.6	-4.7	+3.4	+30	+63	+74	+71
Acc	50%	40%	53%	73%	69%	70%	73%	67%
Milk	SS	DC	CW	EMA	Rib Fat	Rump	RBV %	IMF %
+14	+0.6	-6	+29	+0.1	+5	+6.2	-0.8	+0.9
52%	73%	39%	59%	53%	56%	56%	52%	52%

Comments: Clean shouldered, upstanding type of bull standing in a moderate frame with good head and bone. Strong Meadowslea pedigree with both N166 and L226 featuring. Very same heifer mating figures with calving ease and low birthweight, along with short days to calving and spectacular easy-doing fats make for a good index. Mother bred a yearling in this sale too – at lot 66.

Purchaser:	Price: \$
------------	-----------

Lot: 18 MEADOWSLEA U518 ^{PV}

Birth Date: 10/10/2023 ID No: 19134023518

TAIMATE LAZARUS L12 ^{PV}

MEADOWSLEA P565 ^{SV}

MEADOWSLEA G943

RANGATIRA 16209 ^{SV}

MEADOWSLEA Q378 ^{PV}

MEADOWSLEA M490

INDEXES	
SR	HD
+\$121	+\$93

SEPTEMBER 2025 BREEDPLAN								
	CED	DTRS	GL	BW	200	400	600	MCW
EBV	+0.5	+0.9	-4.6	+4.6	+33	+69	+84	+80
Acc	54%	43%	56%	75%	71%	72%	73%	69%
Milk	SS	DC	CW	EMA	Rib Fat	Rump	RBV %	IMF %
+12	+2.6	-5	+35	+2.8	+0.1	+0	+1	-0.6
57%	74%	41%	61%	58%	60%	60%	56%	57%

Comments: A Lazarus grandson out of a Rangatira 16-209 daughter. Clean shouldered, up standing, and well balanced. Days to calving is short and scrotal size large so you'd expect him to breed fertile progeny as reflect in that SRI.

Purchaser:	Price: \$
------------	-----------

2 YEAR OLD ANGUS BULLS

Lot: 19 MEADOWSLEA U499 PV

Birth Date: 07/10/2023 ID No: 19134023499

TURIHAUA CRUMP E5 SV
MEADOWSLEA N166 SV
MEADOWSLEA G922 SV
STERN 0713
MEADOWSLEA G1059
MEADOWSLEA D149

INDEXES	
SR	HD
+\$89	+\$77

SEPTEMBER 2025 BREEDPLAN								
	CED	DTRS	GL	BW	200	400	600	MCW
EBV	-3.8	+0.4	-2.9	+5.8	+32	+64	+88	+87
Acc	58%	49%	64%	76%	70%	70%	70%	69%
Milk	SS	DC	CW	EMA	Rib Fat	Rump	RBV %	IMF %
+14	+0.6	-4	+36	+4.3	+2.3	+1.4	+0.8	+0.2
65%	70%	48%	61%	61%	63%	63%	59%	63%

Comments: This N166 son leads in this pen of bigger framed bulls. He has clean shoulders, a lovely upstanding outlook, a tidy topline and some scale about him with plenty of muscle and strong fats. Plenty of longevity in the background - dam G1059 was here for years!

Purchaser:	Price: \$
------------	-----------

Lot: 20 MEADOWSLEA U599 PV

Birth Date: 01/11/2023 ID No: 19134023599

RANGATIRA 16209 SV
MEADOWSLEA S231 PV
MEADOWSLEA M553
MEADOWSLEA F540
MEADOWSLEA P866 SV
MEADOWSLEA J534 SV

INDEXES	
SR	HD
+\$111	+\$68

SEPTEMBER 2025 BREEDPLAN								
	CED	DTRS	GL	BW	200	400	600	MCW
EBV	-5.6	-1.7	-3.9	+5.4	+36	+68	+84	+85
Acc	50%	39%	50%	73%	69%	70%	73%	67%
Milk	SS	DC	CW	EMA	Rib Fat	Rump	RBV %	IMF %
+13	+2.5	-5	+27	+1.7	+2.2	+1.8	+0.7	-0.3
51%	73%	41%	59%	54%	58%	58%	54%	53%

Comments: Another upstanding bigger framed bull, going back to Rangatira 16209 and F540. Grand-dam J534 was one of the top cows sold to Jade Park Angus in Australia in the 2023 Female Sale to enter an embryo transfer programme. U599 has clean shoulders, a good coat, some scope and scale. Scrotal size and fats are strong so you'd expect him to breed you fertile, easy doing cattle that will thrive on the hill.

Purchaser:	Price: \$
------------	-----------

2 YEAR OLD ANGUS BULLS

Lot: 21 MEADOWSLEA U276 ^{PV}

Birth Date: 20/09/2023 **ID No:** 19134023276

MEADOWSLEA M429

MEADOWSLEA R646 ^{PV}

MEADOWSLEA M542

MEADOWSLEA K703 ^{SV}

MEADOWSLEA P675 ^{SV}

MEADOWSLEA G1038

INDEXES	
SR	HD
+\$98	+\$61

SEPTEMBER 2025 BREEDPLAN								
	CED	DTRS	GL	BW	200	400	600	MCW
EBV	-8.1	-8	-3.1	+6.4	+41	+76	+94	+112
Acc	63%	53%	80%	82%	82%	80%	81%	78%
Milk	SS	DC	CW	EMA	Rib Fat	Rump	RBV %	IMF %
+2	+1.9	-3	+28	-3.9	+1.4	+2.5	+0	+1.1
72%	78%	45%	69%	68%	69%	69%	61%	72%

Comments: A scopy R646 son is next suitable for mating adult cows. This is an upstanding, stylish bull with the great depth and volume typical of this bloodline, with Crump and Meat Machine on the dam side.

Purchaser:	Price: \$
-------------------	------------------

Lot: 22 MEADOWSLEA U245 ^{PV}

Birth Date: 18/09/2023 **ID No:** 19134023245

TURIHAUA CRUMP E5 ^{SV}

MEADOWSLEA N166 ^{SV}

MEADOWSLEA G922 ^{SV}

WAITERENUI ALLIANCE J144

MEADOWSLEA M606

MEADOWSLEA H225

INDEXES	
SR	HD
+\$79	+\$86

SEPTEMBER 2025 BREEDPLAN								
	CED	DTRS	GL	BW	200	400	600	MCW
EBV	-1.2	+3.4	-3.4	+4.3	+31	+60	+89	+78
Acc	56%	46%	64%	76%	72%	73%	76%	70%
Milk	SS	DC	CW	EMA	Rib Fat	Rump	RBV %	IMF %
+18	+0.8	-4	+33	+1.8	+2.7	+2	+0.6	+0
62%	75%	45%	63%	59%	62%	61%	57%	61%

Comments: Powerful headed 166 son with great foot and bone. He has a nice smooth shoulder and is very well fleshed, deep in the flank and wide in the hindquarter. His moderate birthweight makes him suitable for mating either heifers or adult cows and he has big easy-doing fats.

Purchaser:	Price: \$
-------------------	------------------

2 YEAR OLD ANGUS BULLS

Lot: 23 MEADOWSLEA U549 ^{PV}

Birth Date: 15/10/2023 **ID No:** 19134023549

RANGATIRA 13-38

MEADOWSLEA R650 ^{PV}

MEADOWSLEA H117 ^{SV}

MEADOWSLEA M565

MEADOWSLEA P810 ^{SV}

MEADOWSLEA K012 ^{SV}

INDEXES	
SR	HD
+\$107	+\$77

SEPTEMBER 2025 BREEDPLAN								
	CED	DTRS	GL	BW	200	400	600	MCW
EBV	-1.5	+0.8	-2.9	+4.5	+28	+56	+67	+44
Acc	54%	44%	62%	75%	71%	72%	75%	69%
Milk	SS	DC	CW	EMA	Rib Fat	Rump	RBV %	IMF %
+13	+2.1	-4	+24	+1	+1.6	+2	-0.1	+2.8
59%	74%	40%	61%	56%	59%	59%	54%	59%

Comments: Lovely soft fleshing about this bull with clean shoulders and a great pull-up. Deep, thick, and very sound with impressive IMF EBV backed up with a top actual scan! Goes back to Rangatira 13-38, and the mother also bred a yearling in this sale at lot 87.

Purchaser:	Price: \$
-------------------	------------------

Lot: 24 MEADOWSLEA U477 ^{PV}

Birth Date: 05/10/2023 **ID No:** 19134023477

MEADOWSLEA MEAT MACHINE G914 ^{SV}

MEADOWSLEA R818 ^{PV}

MEADOWSLEA N108

MEADOWSLEA N516

MEADOWSLEA Q518 ^{SV}

MEADOWSLEA K807

INDEXES	
SR	HD
+\$75	+\$83

SEPTEMBER 2025 BREEDPLAN								
	CED	DTRS	GL	BW	200	400	600	MCW
EBV	-1.6	-6.7	-0.2	+4.2	+34	+66	+83	+55
Acc	65%	52%	81%	81%	82%	80%	80%	77%
Milk	SS	DC	CW	EMA	Rib Fat	Rump	RBV %	IMF %
+20	+1.9	-2	+41	+1	+1.8	+3.4	+0.5	-0.9
71%	78%	44%	68%	68%	68%	69%	61%	72%

Comments: A thick, strong 818 son. Moderate birthweight makes him suitable for cows or heifers; he has a strong top with great depth throughout and is very sound on the ground. Very good robust strong bull.

Purchaser:	Price: \$
-------------------	------------------

2 YEAR OLD ANGUS BULLS

Lot: 25 MEADOWSLEA U464 ^{PV}

Birth Date: 03/10/2023 **ID No:** 19134023464

TAIMATE LAZARUS L12 ^{PV}

MEADOWSLEA P565 ^{SV}

MEADOWSLEA G943

MEADOWSLEA K703 ^{SV}

MEADOWSLEA Q175 ^{PV}

MEADOWSLEA K701 ^{SV}

INDEXES	
SR	HD
+\$119	+\$80

SEPTEMBER 2025 BREEDPLAN								
	CED	DTRS	GL	BW	200	400	600	MCW
EBV	-2.8	-1.1	-3	+6	+34	+66	+89	+76
Acc	55%	45%	56%	76%	72%	72%	74%	69%
Milk	SS	DC	CW	EMA	Rib Fat	Rump	RBV %	IMF %
+10	+2.9	-5	+34	+0.8	+2.3	+2.3	+0.6	-0.9
58%	73%	44%	62%	58%	61%	60%	56%	57%

Comments: Going back to Lazarus, Crump and Meat Machine this is a very deep bodied bull. Strong head and a thick wide body with good fertility. Grand dam bred a top bull sold to Luke Scragg last year and lasted the full 10 years before being sold for stud in the 2024 female sale.

Purchaser:	Price: \$
-------------------	------------------

Lot: 26 MEADOWSLEA U606 ^{SV}

Birth Date: 09/11/2023 **ID No:** 19134023606

WAITAWHETA N41 ^{SV}

ROCKLEY R41 ^{PV}

TE ATARANGI MISSY P802 ^{SV}

MEADOWSLEA Q295 ^{PV}

MEADOWSLEA S470 ^{PV}

MEADOWSLEA Q300 ^{PV}

INDEXES	
SR	HD
+\$147	+\$88

SEPTEMBER 2025 BREEDPLAN								
	CED	DTRS	GL	BW	200	400	600	MCW
EBV	-1.6	-3.6	-5.7	+6.1	+43	+76	+95	+77
Acc	52%	42%	59%	72%	68%	69%	72%	66%
Milk	SS	DC	CW	EMA	Rib Fat	Rump	RBV %	IMF %
+14	+3.9	-6	+39	+1.5	+2.9	+3.4	-0.5	+1.9
55%	71%	33%	58%	55%	57%	57%	51%	57%

Comments: Clean shoulders, a good top line, and nice balance to this bull. We purchased his sire Rockley R41 because of his incredible fertility and this chap has terrific scrotal size and short days to calving, as well as big fats, lots of IMF and very good indexes!

Purchaser:	Price: \$
-------------------	------------------

2 YEAR OLD ANGUS BULLS

Lot: 27 MEADOWSLEA U117 PV

Birth Date: 06/09/2023 ID No: 19134023117

TURIROA PANTHER 18P241 PV

MEADOWSLEA S402 PV

MEADOWSLEA L157 SV

MEADOWSLEA Q158 PV

MEADOWSLEA S523 PV

MEADOWSLEA P595 SV

INDEXES	
SR	HD
+\$107	+\$95

SEPTEMBER 2025 BREEDPLAN								
	CED	DTRS	GL	BW	200	400	600	MCW
EBV	+0.6	+1.2	-6	+4.5	+38	+70	+90	+76
Acc	51%	42%	60%	73%	69%	69%	73%	66%
Milk	SS	DC	CW	EMA	Rib Fat	Rump	RBV %	IMF %
+18	+1	-4	+44	-0.4	+3.9	+3.9	-0.2	+1.2
55%	72%	35%	58%	54%	57%	57%	51%	57%

Comments: A deep bodied, strong, heavy bull. Sire S402 had Reality and 2 shots of Crump in his pedigree, while sire of dam Q158 was a very good F540 x Reality bull sold to Corey Roulston. Short gestation and moderate birthweight are followed by decent growth, big fats, and some IMF.

Purchaser:	Price: \$
------------	-----------

Lot: 28 MEADOWSLEA U413 PV

Birth Date: 28/09/2023 ID No: 19134023413

TURIHAUA TORPEDO M27 SV

TURIHAUA TORNADO Q336 PV

TURIHAUA L112

KAYJAY FREEDOM I36

MEADOWSLEA M667

MEADOWSLEA G828

INDEXES	
SR	HD
+\$115	+\$85

SEPTEMBER 2025 BREEDPLAN								
	CED	DTRS	GL	BW	200	400	600	MCW
EBV	-0.2	+3.1	-3.8	+3.7	+28	+57	+75	+79
Acc	55%	45%	61%	75%	71%	72%	69%	67%
Milk	SS	DC	CW	EMA	Rib Fat	Rump	RBV %	IMF %
+8	+2	-5	+20	+1.8	+2.4	+2.1	+0.6	+0.2
60%	74%	42%	60%	58%	60%	60%	55%	60%

Comments: We used this Tornado son as a yearling to mate our own stud heifers. A typical Tornado, he displays a nice moderate frame with strong head bone and a good coat. A really compact, sound, hill country type with low birthweight suitable for heifers and good fats. Dam M667 also bred a yearling in the first pen - lot 37, as well as sale bulls to Mt Gerald and KJ Black, and a top heifer transferred to Picton Park Angus.

Purchaser:	Price: \$
------------	-----------

2 YEAR OLD ANGUS BULLS

Lot: 29 MEADOWSLEA U610 ^{PV}

Birth Date: 12/11/2023 **ID No:** 19134023610

RANGATIRA 13-38

MEADOWSLEA R650 ^{PV}

MEADOWSLEA H117 ^{SV}

MEADOWSLEA K703 ^{SV}

MEADOWSLEA Q516 ^{PV}

MEADOWSLEA M1093

INDEXES	
SR	HD
+\$120	+\$71

SEPTEMBER 2025 BREEDPLAN								
	CED	DTRS	GL	BW	200	400	600	MCW
EBV	-2.3	+0.8	-2.3	+4.7	+26	+55	+60	+34
Acc	54%	44%	61%	74%	70%	71%	72%	68%
Milk	SS	DC	CW	EMA	Rib Fat	Rump	RBV %	IMF %
+14	+1.9	-4	+20	-0.6	+2.2	+2.7	+0.3	+0.9
58%	62%	41%	60%	57%	59%	59%	54%	59%

Comments: Another compact, thick R650 up next with a strong head and exceptionally efficient cow size. He has big fat EBVs and one of the top actual IMF measurements of any bull scanned. Dam is the grand dam of U179, sold to Peak Hill in the winter, and of the first yearling up in this sale.

Purchaser:	Price: \$
-------------------	------------------

Lot: 30 MEADOWSLEA U594 ^{PV}

Birth Date: 30/10/2023 **ID No:** 19134023594

MEADOWSLEA N166 ^{SV}

MEADOWSLEA S454 ^{PV}

MEADOWSLEA G920

MEADOWSLEA P617 ^{SV}

MEADOWSLEA R575 ^{PV}

MEADOWSLEA P573 ^{SV}

INDEXES	
SR	HD
+\$103	+\$105

SEPTEMBER 2025 BREEDPLAN								
	CED	DTRS	GL	BW	200	400	600	MCW
EBV	+3.5	+3.1	-4.8	+2.9	+29	+63	+82	+73
Acc	49%	38%	52%	73%	68%	69%	72%	66%
Milk	SS	DC	CW	EMA	Rib Fat	Rump	RBV %	IMF %
+19	+1.4	-4	+31	+4.8	+3	+2.7	+1	-0.3
50%	73%	37%	57%	52%	56%	55%	51%	51%

Comments: An N166 grandson this time with a deep, well fleshed body, nice balance and a good backend. Low birthweight and positive calving ease make him ideal for mating heifers, and he has enough growth, muscle and fat to be a real prospect for adult cows as well.

Purchaser:	Price: \$
-------------------	------------------

2 YEAR OLD ANGUS BULLS

Lot: 31 MEADOWSLEA U180 ^{PV}

Birth Date: 13/09/2023 **ID No:** 19134023180

MEADOWSLEA P700 ^{SV}

MEADOWSLEA S184 ^{PV}

MEADOWSLEA N475

MEADOWSLEA Q290 ^{SV}

MEADOWSLEA S126 ^{PV}

MEADOWSLEA Q508 ^{PV}

INDEXES	
SR	HD
+\$118	+\$95

SEPTEMBER 2025 BREEDPLAN								
	CED	DTRS	GL	BW	200	400	600	MCW
EBV	+1.9	+1.4	-4.7	+2.3	+31	+60	+76	+53
Acc	50%	37%	49%	72%	66%	62%	61%	60%
Milk	SS	DC	CW	EMA	Rib Fat	Rump	RBV %	IMF %
+18	+2.6	-5	+22	+1.6	+3.9	+4.2	-0.9	+4.2
48%	53%	33%	52%	47%	51%	51%	46%	49%

Comments: Another compact low birthweight bull with clean shoulders so ideal for mating heifers. Good fertility, big fats and a lot of IMF comes through from both sides of this pedigree, with P700 and Q290 both having real carcass credentials.

Purchaser:	Price: \$
-------------------	------------------

Lot: 32 MEADOWSLEA U426 ^{PV}

Birth Date: 29/09/2023 **ID No:** 19134023426

MEADOWSLEA M564 ^{SV}

MEADOWSLEA QUARTZ Q250 ^{PV}

MEADOWSLEA K710 ^{SV}

MEADOWSLEA L054

MEADOWSLEA P575 ^{SV}

MEADOWSLEA G1026

INDEXES	
SR	HD
+\$110	+\$69

SEPTEMBER 2025 BREEDPLAN								
	CED	DTRS	GL	BW	200	400	600	MCW
EBV	-3.5	+0.9	-1.9	+3.2	+25	+52	+65	+56
Acc	56%	45%	70%	76%	72%	72%	75%	70%
Milk	SS	DC	CW	EMA	Rib Fat	Rump	RBV %	IMF %
+15	+2.4	-5	+15	+3.3	+4.2	+4.2	+0.4	+0.8
59%	74%	41%	62%	57%	60%	60%	55%	60%

Comments: The only Quartz 250 son in this 2-year-old mob - this bloodline is the real feature of the yearling draft. A compact, easy fleshing bull with low birthweight, fat, muscle, and fertility data behind him.

Purchaser:	Price: \$
-------------------	------------------

2 YEAR OLD ANGUS BULLS

Lot: 33 MEADOWSLEA U402 ^{PV}

Birth Date: 28/09/2023 **ID No:** 19134023402

TIMPERLEA QUAIN 763 ^{PV}

MEADOWSLEA S108 ^{PV}

MEADOWSLEA Q181 ^{SV}

MEADOWSLEA L226 ^{SV}

MEADOWSLEA S322 ^{PV}

MEADOWSLEA G931

INDEXES	
SR	HD
+\$116	+\$117

SEPTEMBER 2025 BREEDPLAN

	CED	DTRS	GL	BW	200	400	600	MCW
EBV	+5.6	+1.1	-5.8	+2.2	+40	+85	+104	+95
Acc	63%	52%	80%	81%	81%	79%	80%	77%
Milk	SS	DC	CW	EMA	Rib Fat	Rump	RBV %	IMF %
+23	+2.5	-6	+40	+0.3	+0	+0.3	-0.2	+1.1
71%	77%	43%	67%	67%	67%	68%	59%	72%

Comments: Very good figures to finish the mob - good calving ease, short gestation, growth, and fertility! A clean shouldered, easy fleshing bull going back to Lazarus, Crump, and F540.

Purchaser:

Price: \$



High Survival, High Performance Romneys
Plus new Worm resistant line!



1/2 Perendale x 1/2 Romney (Romdale)
1/4 Perendale x 1/4 Texel x 1/2 Romney



1/2 Romney X 1/2 Texel
3/4 Romney X 1/4 Texel



K X Romney (1/2 composite x 1/2 Romney)



Terminator tough hill-bred sire



K Maternal hill-bred composite



MEADOWSLEA
ANGUS & SHEEP GENETICS

**Celebrating 100 years of
Meadowslea Romneys!**



33 YEARS UNSHEPHERDED ON HILL-COUNTRY

RAM SALE
300 RAMS

Thursday November 27th 12:30pm

Helmsman Auction

On-farm and Online through [yourbid](http://yourbid.co.nz)

Register NOW at www.meadowslea.co.nz

to win a \$2000 Ram!

David Giddings 027 2299760

George Giddings 027 656 3323

giddingsfamily@xtra.co.nz





Proven performance.



Error free, convenient
DNA sampling with Allflex TSU
(tissue sampling unit).

Allflex®

Livestock Intelligence

Duncan Steans 027446 5508 (Upper North)
Mark McManaway 027 517 6693 (Lower North)
Steve Kelly 027 560 2699 (South Island)

www.allflex.co.nz

YEARLING ANGUS BULLS

Lot: 34 MEADOWSLEA V349 ^{PV}

Birth Date: 30/09/2024 **ID No:** 19134024349

MEADOWSLEA Q178 ^{PV}

MEADOWSLEA T191 ^{PV}

MEADOWSLEA N223

MEADOWSLEA P700 ^{SV}

MEADOWSLEA S124 ^{PV}

MEADOWSLEA Q516 ^{PV}

INDEXES	
SR	HD
+\$129	+\$81

SEPTEMBER 2025 BREEDPLAN								
	CED	DTRS	GL	BW	200	400	600	MCW
EBV	-1.1	+1.8	-6.4	+3.4	+30	+66	+85	+66
Acc	63%	51%	80%	81%	82%	79%	80%	77%
Milk	SS	DC	CW	EMA	Rib Fat	Rump	RBV %	IMF %
+17	+1.9	-6	+20	-6.2	+6.3	+6.9	-1.3	+1.9
71%	77%	41%	68%	67%	67%	68%	59%	72%

Comments: Real power and strength to start this catalogue. Sire T191 was sold at lot 4 in the 2024 Bull Sale to Ratanui Angus and was the standout bull of his year. Dam S124 is a top performing young cow with her first calf as a two-year-old U179 having the best back end in our 2025 bull sale and selling to Stu Millar at Peak Hill Station. V349 shows all the depth, thickness, and strength we would expect with powerful head and bone. Terrific topline, exceptional easy doing fats – in the top 1% of the breed – and fertility traits which are right up there too. Out of a cow by P700 so plenty of IMF coming through too. He will develop into a top sire suitable for both cows and heifers.

Purchaser:	Price: \$
-------------------	------------------

Lot: 35 MEADOWSLEA V289 ^{PV}

Birth Date: 25/09/2024 **ID No:** 19134024289

GOLDWYN H817 ^{SV}

TURIROA PANTHER 18P241 ^{PV}

TURIROA L120

MEADOWSLEA F540

MEADOWSLEA M639

MEADOWSLEA G858

INDEXES	
SR	HD
+\$117	+\$95

SEPTEMBER 2025 BREEDPLAN								
	CED	DTRS	GL	BW	200	400	600	MCW
EBV	+0.7	+1.6	-6.9	+3.3	+39	+73	+95	+82
Acc	65%	55%	81%	82%	82%	80%	81%	78%
Milk	SS	DC	CW	EMA	Rib Fat	Rump	RBV %	IMF %
+20	+4.1	-5	+30	-2.7	+5.3	+6.4	-0.7	+0.4
73%	78%	48%	69%	69%	69%	70%	63%	73%

Comments: Another very well-bred bull here, a son of Turiroa Panther this time, and out of a great old F540 cow who has bred 2 very good heifers transferred to Hayden Fletcher's Denali stud. This pedigree features the great F540 x Crump cross which has worked so well for us over the years. Nice low birthweight, short gestation, and exceptional fertility with scrotal size in the top 1% of the breed. The same incredible easy doing attributes with massive fats and lovely depth, thickness, hindquarter, and topline.

Purchaser:	Price: \$
-------------------	------------------

YEARLING ANGUS BULLS

Lot: 36 MEADOWSLEA V357 ^{PV}

Birth Date: 01/10/2024 **ID No:** 19134024357

MEADOWSLEA M429

MEADOWSLEA R646 ^{PV}

MEADOWSLEA M542

MEADOWSLEA M648

MEADOWSLEA Q247 ^{PV}

MEADOWSLEA G1026

INDEXES	
SR	HD
+\$73	+\$66

SEPTEMBER 2025 BREEDPLAN								
	CED	DTRS	GL	BW	200	400	600	MCW
EBV	-8.5	-4.8	-3	+5.9	+44	+89	+116	+127
Acc	63%	52%	81%	81%	82%	80%	80%	77%
Milk	SS	DC	CW	EMA	Rib Fat	Rump	RBV %	IMF %
+13	+0.5	-3	+45	-5.2	+1.7	+2.5	+0.2	-1
71%	78%	44%	68%	67%	68%	69%	61%	72%

Comments: Another very solid, strong bull here with terrific head and bone, very powerful growth, wonderful topline and exceptional hindquarter. Scale and scope about this bull will make him a frontline sire for mating adult cows. Structural very sound and should last for years.

Purchaser:	Price: \$
-------------------	------------------

Lot: 37 MEADOWSLEA V265 ^{PV}

Birth Date: 21/09/2024 **ID No:** 19134024265

MEADOWSLEA M564 ^{SV}

MEADOWSLEA QUARTZ Q250 ^{PV}

MEADOWSLEA K710 ^{SV}

KAYJAY FREEDOM I36

MEADOWSLEA M667

MEADOWSLEA G828

INDEXES	
SR	HD
+\$95	+\$68

SEPTEMBER 2025 BREEDPLAN								
	CED	DTRS	GL	BW	200	400	600	MCW
EBV	-6.7	+3.4	-3.3	+4.8	+39	+71	+100	+91
Acc	64%	52%	81%	82%	82%	80%	80%	78%
Milk	SS	DC	CW	EMA	Rib Fat	Rump	RBV %	IMF %
+20	+3.3	-5	+26	+0.1	+3.5	+3.3	-0.1	+0.8
72%	77%	45%	68%	68%	68%	69%	61%	72%

Comments: First of the Quartz Q250 sons which are a real feature of the catalogue this year. Quartz is a grandson of our record-breaking cow G1000 who was sold to Ballanee Angus Australia for \$16,050. Dam M667 is breeding well: her 2023 born son U413 was used as a yearling in the stud and appears at lot 28 in the R2 catalogue. She features an outcross pedigree going back to KayJay Freedom and Braveheart. V265 has moderate birthweight, strong growth, impressive fertility, very easy doing rib and rump fats. A nicely balanced bull that can be used over cows or heifers.

Purchaser:	Price: \$
-------------------	------------------

YEARLING ANGUS BULLS

Lot: 38 MEADOWSLEA V266 ^{PV}

Birth Date: 22/09/2024 **ID No:** 19134024266

BASIN RAINMAKER 4404 ^{PV}

KINCARDINE RAINSTORME R25 ^{PV}

KINCARDINE 17-759

MEADOWSLEA P879 ^{SV}

MEADOWSLEA R898 ^{PV}

MEADOWSLEA P562 ^{SV}

INDEXES	
SR	HD
+\$174	+\$123

SEPTEMBER 2025 BREEDPLAN

	CED	DTRS	GL	BW	200	400	600	MCW
EBV	+9.9	+2.6	-5.5	+1	+31	+68	+78	+18
Acc	64%	52%	81%	82%	82%	80%	81%	78%
Milk	SS	DC	CW	EMA	Rib Fat	Rump	RBV %	IMF %
+30	+2.1	-8	+41	+1.2	+3.1	+5.1	+0.2	-1
71%	78%	42%	68%	68%	69%	69%	61%	72%

Comments: The first of this year's line-up of Rainstorme sons, showing all the incredible heifer mating traits we expect from this bloodline. Rainstorme now has over 300 progeny in NZ and Australia and is a trait leader for calving ease, scrotal size and milk. V266 has a wonderful clean shoulder with incredible calving ease and low birth weight. He ranks in the top 2% of the breed for these traits as well as his milk and short days to calving figures, so it is no surprise his SRI index also ranks in the top 2%. Moderate cow size, terrific milk and those exceptional easy doing fats give a very good maternal package. Goes back to Crump on the dam side which has proven as good a cross as we'd hoped. Lovely style and outlook and a top heifer mating option!

Purchaser:

Price: \$

Lot: 39 MEADOWSLEA V175 ^{PV}

Birth Date: 12/09/2024 **ID No:** 19134024175

BASIN RAINMAKER 4404 ^{PV}

KINCARDINE RAINSTORME R25 ^{PV}

KINCARDINE 17-759

MEADOWSLEA N166 ^{SV}

MEADOWSLEA R864 ^{PV}

MEADOWSLEA N123

INDEXES	
SR	HD
+\$130	+\$109

SEPTEMBER 2025 BREEDPLAN

	CED	DTRS	GL	BW	200	400	600	MCW
EBV	+5	+5.2	-9	+3.3	+37	+72	+83	+62
Acc	64%	52%	82%	82%	83%	81%	81%	78%
Milk	SS	DC	CW	EMA	Rib Fat	Rump	RBV %	IMF %
+20	+2.4	-5	+36	+0.4	+0.3	-1	+1.1	-1.6
72%	78%	43%	69%	69%	69%	70%	62%	73%

Comments: Similarly bred Rainstorme son, this time out of an N166 daughter so that same Rainstorme x Crump cross which works so well. Great calving ease once again with good solid growth and a lovely shape to him. Clean through the shoulders, nice topline. A well-balanced, stylish bull who is a wonderful heifer mating option with short gestation in the top 1% for the breed.

Purchaser:

Price: \$

YEARLING ANGUS BULLS

Lot: 40 MEADOWSLEA V279 ^{PV}

Birth Date: 23/09/2024 **ID No:** 19134024279

BASIN RAINMAKER 4404 ^{PV}

KINCARDINE RAINSTORME R25 ^{PV}

KINCARDINE 17-759

MEADOWSLEA MEAT MACHINE G914 ^{SV}

MEADOWSLEA P740 ^{SV}

MEADOWSLEA L311

INDEXES	
SR	HD
+\$99	+\$110

SEPTEMBER 2025 BREEDPLAN								
	CED	DTRS	GL	BW	200	400	600	MCW
EBV	+7.4	+4.5	-2.1	+3	+28	+60	+67	+21
Acc	64%	52%	81%	82%	82%	81%	81%	78%
Milk	SS	DC	CW	EMA	Rib Fat	Rump	RBV %	IMF %
+26	+1.1	-3	+23	+1.5	+3.7	+2.4	+0.5	-0.6
73%	78%	44%	69%	68%	69%	70%	62%	72%

Comments: Another classic Rainstorme son, this time out of a Meat Machine daughter who is breeding well, with a daughter sold to KayJay Angus in our 2024 female sale. The same industry-leading calving ease and low birthweight, with moderate cow size and a terrific milk figure. V279 has those easy doing rib and rump fats we look for in the hill-country. A clean shouldered, stylish, and well-balanced young sire who is a great heifer mating choice.

Purchaser:	Price: \$
-------------------	------------------

Lot: 41 MEADOWSLEA V123 ^{PV}

Birth Date: 01/09/2024 **ID No:** 19134024123

MEADOWSLEA Q223 ^{PV}

MEADOWSLEA S160 ^{PV}

MEADOWSLEA Q498 ^{PV}

MEADOWSLEA QUARTZ Q250 ^{PV}

MEADOWSLEA T104 ^{PV}

MEADOWSLEA R816 ^{PV}

INDEXES	
SR	HD
+\$119	+\$96

SEPTEMBER 2025 BREEDPLAN								
	CED	DTRS	GL	BW	200	400	600	MCW
EBV	+5	+3.7	-1	+1.8	+25	+51	+61	+17
Acc	64%	52%	80%	81%	82%	80%	81%	78%
Milk	SS	DC	CW	EMA	Rib Fat	Rump	RBV %	IMF %
+20	+3.1	-5	+3	-4.1	+4.7	+6	-0.9	+1.5
71%	77%	42%	68%	67%	68%	69%	60%	72%

Comments: Very solid chunky bull here by S160, and out of a 2yr heifer by Quartz Q250. Good calving ease, super low birthweight, exceptionally efficient cow weight and those rib and rump fats right at the top of the job. Deep, thick, gutsy bull with a wonderful hindquarter, some real depth and thickness, and super heifer mating figures

Purchaser:	Price: \$
-------------------	------------------

YEARLING ANGUS BULLS

Lot: 42 MEADOWSLEA V348 ^{PV}

Birth Date: 30/09/2024 **ID No:** 19134024348

TURIHAUA APOLLO L383

TURIHAUA JUPITER Q353 ^{PV}

TURIHAUA L84

MEADOWSLEA Q524 ^{PV}

MEADOWSLEA S287 ^{PV}

MEADOWSLEA M581

INDEXES	
SR	HD
+\$118	+\$102

SEPTEMBER 2025 BREEDPLAN								
	CED	DTRS	GL	BW	200	400	600	MCW
EBV	+2.1	-0.7	-3.7	+4.3	+33	+69	+90	+81
Acc	63%	52%	80%	81%	82%	80%	80%	77%
Milk	SS	DC	CW	EMA	Rib Fat	Rump	RBV %	IMF %
+20	+0.5	-6	+40	+1.4	+2.9	+2.8	+0.2	+1.6
71%	77%	44%	68%	67%	68%	69%	61%	72%

Comments: Very stylish son of Turihaua Jupiter here, with lovely clean shoulders, plenty of growth and easy-doing fats. Wonderful upstanding type of bull with the option of use over either cows or heifers. Really sound, stylish type who scanned with one of the best IMF results out of all 240 bulls. Have a close look here!

Purchaser:	Price: \$
-------------------	------------------

Lot: 43 MEADOWSLEA V237 ^{DV}

Birth Date: 19/09/2024 **ID No:** 19134024237

DANDALOO ADMIRAL 741

KAHARAU COBRA 10-546 ^{SV}

KAHARAU 07-8134

MEADOWSLEA MEAT MACHINE G914 ^{SV}

MEADOWSLEA N160

MEADOWSLEA H236

INDEXES	
SR	HD
+\$132	+\$115

SEPTEMBER 2025 BREEDPLAN								
	CED	DTRS	GL	BW	200	400	600	MCW
EBV	+4	+0.8	-3.7	+3.4	+38	+80	+108	+78
Acc	68%	59%	82%	82%	83%	81%	81%	79%
Milk	SS	DC	CW	EMA	Rib Fat	Rump	RBV %	IMF %
+18	+1.7	-5	+65	-0.1	+2.1	+2.4	+0.7	-1.1
75%	79%	51%	72%	71%	72%	72%	66%	75%

Comments: Son of Kaharau Cobra who we used in our AI programme and out of a Meat Machine cow who has bred well, including a top son sold to Queensbury Ridges at \$12,000. Crump also features in the pedigree ensuring strong fertility traits. Low birthweight is followed by very strong growth. This bull has clean shoulders with scope and scale. Another very similar sound, upstanding bull suitable for heifers and cows.

Purchaser:	Price: \$
-------------------	------------------

YEARLING ANGUS BULLS

Lot: 44 MEADOWSLEA V158 ^{PV}

Birth Date: 10/09/2024 **ID No:** 19134024158

MERCHISTON STEAKHOUSE 489 ^{SV}

KAYJAY MEATPACK R410 ^{SV}

ALPINE ZULU LADY 115

GLANWORTH WAIGROUP 14129

MEADOWSLEA N238

MEADOWSLEA L327 ^{SV}

INDEXES	
SR	HD
+\$77	+\$99

SEPTEMBER 2025 BREEDPLAN								
	CED	DTRS	GL	BW	200	400	600	MCW
EBV	+3	-5.5	-2.4	+2.5	+32	+60	+80	+61
Acc	64%	52%	81%	82%	82%	80%	81%	78%
Milk	SS	DC	CW	EMA	Rib Fat	Rump	RBV %	IMF %
+21	+1.4	-4	+38	+4.1	+3.9	+3.2	-0.4	+2
72%	78%	41%	68%	67%	68%	69%	60%	72%

Comments: A son of the well-known Kayjay Meatpack, also used in our AI programme. Out of a top cow who bred Q118, a bull used in the stud and sold to Rocky Point Station at \$16,000; another top son to Greg Hand at \$9,500; and a top daughter transferred to KayJay angus at \$3,500. Meatpack has left them thick and strong and V158 is no exception. Good low birthweight, plenty of muscle, good strong fats, and the bonus of some IMF. Another bull that will develop into a mighty adult sire suitable for both cows and heifers.

Purchaser:	Price: \$
-------------------	------------------

Lot: 45 MEADOWSLEA V205 ^{PV}

Birth Date: 16/09/2024 **ID No:** 19134024205

TURIHAUA HULK K100 ^{SV}

TURIHAUA AVENGER N59 ^{SV}

TURIHAUA F83

GLANWORTH WAIGROUP 14129

MEADOWSLEA N108

MEADOWSLEA L199

INDEXES	
SR	HD
+\$147	+\$92

SEPTEMBER 2025 BREEDPLAN								
	CED	DTRS	GL	BW	200	400	600	MCW
EBV	-0.6	+5.4	-1.4	+4	+34	+70	+88	+104
Acc	67%	58%	82%	82%	83%	81%	82%	79%
Milk	SS	DC	CW	EMA	Rib Fat	Rump	RBV %	IMF %
+7	+1.1	-6	+33	-0.4	+3.9	+4.7	+0.2	+1.4
74%	79%	48%	71%	70%	71%	71%	64%	74%

Comments: Another AI progeny with an exciting pedigree. V205 is a son of the well-known Turihaua Avenger who has bred so well throughout the country, and he is out of a top cow who is also the dam of stud sire Meadowslea R818, sold at \$24,000 to Jade Park Angus in Australia. Nice moderate birthweight, good strong growth, and very easy doing fats feature once again. Very solid, thick, square type of bull suitable for heifers or cows again. Don't miss this one!

Purchaser:	Price: \$
-------------------	------------------

YEARLING ANGUS BULLS

Lot: 46 MEADOWSLEA V160 ^{PV}

Birth Date: 10/09/2024 **ID No:** 19134024160

MEADOWSLEA N166 ^{SV}

MEADOWSLEA MOUNTAIN MAN R705 ^{PV}

MEADOWSLEA H107 ^{SV}

MEADOWSLEA N141

MEADOWSLEA Q234 ^{PV}

MEADOWSLEA J576

INDEXES	
SR	HD
+\$104	+\$105

SEPTEMBER 2025 BREEDPLAN								
	CED	DTRS	GL	BW	200	400	600	MCW
EBV	+6.1	+5.5	-7.3	+3.5	+25	+54	+70	+54
Acc	64%	53%	81%	82%	83%	81%	81%	78%
Milk	SS	DC	CW	EMA	Rib Fat	Rump	RBV %	IMF %
+18	+0.9	-5	+26	+1.2	+4.6	+5	-0.2	+0.5
72%	78%	46%	69%	69%	69%	70%	62%	73%

Comments: Here is a son of the \$92,500 Meadowslea Mountain Man, sold to KayJay Angus in 2023, who goes back to Braveheart twice on the dam side! Exceptional calving ease and short gestation are in the top 5% of the breed, with nice low birthweight, moderate growth, and exceptional fats! Very sound, thick, deep, square, meaty bull. Another one to check out closely!

Purchaser:	Price: \$
-------------------	------------------

Lot: 47 MEADOWSLEA V489 ^{PV}

Birth Date: 15/10/2024 **ID No:** 19134024489

TURIHAUA TORNADO Q336 ^{PV}

MEADOWSLEA T382 ^{PV}

MEADOWSLEA Q152 ^{PV}

MEADOWSLEA K703 ^{SV}

MEADOWSLEA P691 ^{SV}

MEADOWSLEA L238

INDEXES	
SR	HD
+\$137	+\$59

SEPTEMBER 2025 BREEDPLAN								
	CED	DTRS	GL	BW	200	400	600	MCW
EBV	-4.7	+0	-3.1	+4.9	+28	+52	+64	+28
Acc	65%	55%	81%	82%	83%	81%	81%	79%
Milk	SS	DC	CW	EMA	Rib Fat	Rump	RBV %	IMF %
+14	+2.1	-6	+15	-4.1	+5	+5.8	-0.9	+1.8
74%	78%	47%	70%	69%	70%	70%	62%	74%

Comments: A terrific Turihaua pedigree here. Sired by a son of Turihaua Tornado, who you will note is breeding very strongly, and back to 3 shots of Crump in the pedigree. Moderate birthweight, with the top fertility traits and IMF we always get from Crump with terrific fats! a good, sound, middle of the road bull who will thrive in hill country.

Purchaser:	Price: \$
-------------------	------------------

YEARLING ANGUS BULLS

Lot: 48 MEADOWSLEA V218 ^{PV}

Birth Date: 17/09/2024 **ID No:** 19134024218

TURIHAUA TORPEDO M27 ^{SV}

TURIHAUA TORNADO Q336 ^{PV}

TURIHAUA L112

MEADOWSLEA M464

MEADOWSLEA P767 ^{SV}

MEADOWSLEA H114

INDEXES	
SR	HD
+\$81	+\$116

SEPTEMBER 2025 BREEDPLAN								
	CED	DTRS	GL	BW	200	400	600	MCW
EBV	+6.7	-0.5	-3	+1.2	+26	+64	+83	+89
Acc	64%	53%	80%	82%	82%	80%	81%	78%
Milk	SS	DC	CW	EMA	Rib Fat	Rump	RBV %	IMF %
+15	+2.6	-3	+14	+1.9	+2.2	+2.6	-0.1	+3
72%	77%	46%	69%	68%	69%	70%	62%	73%

Comments: A direct Tornado son this time with F540 on the dam side. Top pedigree here with dam having bred S341, our top price bull sold in the 2023 sale to Mt Possession Angus at \$23,000, and another stud sold to Picton Park Angus. Another very sound type with super low birthweight, lots of calving ease, good growth, fertility, and easy doing fats. Nice deep, thick, square, easy-doing type with IMF at near the top of the breed.

Purchaser:	Price: \$
-------------------	------------------

Lot: 49 MEADOWSLEA V121 ^{PV}

Birth Date: 01/09/2024 **ID No:** 19134024121

MEADOWSLEA P674 ^{SV}

MEADOWSLEA T172 ^{PV}

MEADOWSLEA P893 ^{SV}

MEADOWSLEA R572 ^{PV}

MEADOWSLEA T152 ^{PV}

MEADOWSLEA R681 ^{PV}

INDEXES	
SR	HD
+\$123	+\$76

SEPTEMBER 2025 BREEDPLAN								
	CED	DTRS	GL	BW	200	400	600	MCW
EBV	-3	+2	-3.9	+3.8	+30	+67	+84	+60
Acc	63%	52%	80%	80%	81%	79%	80%	77%
Milk	SS	DC	CW	EMA	Rib Fat	Rump	RBV %	IMF %
+14	+1	-6	+43	-1.8	+1.6	+1.1	+0	+1.7
71%	77%	43%	67%	66%	67%	68%	60%	71%

Comments: A son of T172, our lot 1 bull sold at \$21,000 in our 2024 bull sale to Glen R Angus, out of a cow by R572, sold at \$20,000 to Red Oak Angus at lot 1 in 2022. Low birthweight followed by good growth, fertility, good fats and IMF. A nice, thick, easy doing heifer option bull once again.

Purchaser:	Price: \$
-------------------	------------------

YEARLING ANGUS BULLS

Lot: 50 MEADOWSLEA V268 ^{PV}

Birth Date: 22/09/2024 **ID No:** 19134024268

TURIHAUA JUPITER Q353 ^{PV}

MEADOWSLEA T178 ^{SV}

MEADOWSLEA Q252 ^{PV}

MEADOWSLEA N465 ^{SV}

MEADOWSLEA Q331 ^{PV}

MEADOWSLEA N239

INDEXES	
SR	HD
+\$113	+\$89

SEPTEMBER 2025 BREEDPLAN								
	CED	DTRS	GL	BW	200	400	600	MCW
EBV	+1.5	-8	-9.6	+3.9	+39	+69	+78	+70
Acc	63%	52%	80%	81%	82%	80%	80%	77%
Milk	SS	DC	CW	EMA	Rib Fat	Rump	RBV %	IMF %
+7	+1.4	-4	+32	-5.2	+2.1	+3.9	-0.8	+0.2
72%	77%	43%	68%	67%	68%	69%	60%	72%

Comments: Sired by a very good yearling son of Turihaua Jupiter who was later sold at lot 3 in the 2024 bull sale to Rocky Point Station. Another nice moderate birthweight bull with very short gestation, followed by moderate growth and good fat covers. An easy-doing, moderate type.

Purchaser:	Price: \$
-------------------	------------------

Lot: 51 MEADOWSLEA V274 ^{PV}

Birth Date: 23/09/2024 **ID No:** 19134024274

MEADOWSLEA M564 ^{SV}

MEADOWSLEA QUARTZ Q250 ^{PV}

MEADOWSLEA K710 ^{SV}

WAITERENUI ALLIANCE J144

MEADOWSLEA N352

MEADOWSLEA F597

INDEXES	
SR	HD
+\$112	+\$86

SEPTEMBER 2025 BREEDPLAN								
	CED	DTRS	GL	BW	200	400	600	MCW
EBV	-1.4	+1.2	-4.3	+3.1	+37	+72	+96	+62
Acc	64%	53%	81%	82%	82%	80%	81%	78%
Milk	SS	DC	CW	EMA	Rib Fat	Rump	RBV %	IMF %
+22	+4.2	-5	+44	+0.2	+3.4	+3.9	-0.3	-0.1
72%	77%	45%	69%	68%	69%	69%	61%	72%

Comments: Another of these consistent Quartz Q250 sons that are such a feature of this catalogue with great heifer mating data. Low birthweight is followed by good growth, very strong fertility traits, and great fats. A good, solid, deep bodied type that is a true heifer and cow mating option.

Purchaser:	Price: \$
-------------------	------------------

YEARLING ANGUS BULLS

Lot: 52 MEADOWSLEA V367 ^{PV}

Birth Date: 02/10/2024 **ID No:** 19134024367

TURIHAUA TORNADO Q336 ^{PV}

MEADOWSLEA T382 ^{PV}

MEADOWSLEA Q152 ^{PV}

MEADOWSLEA F540

MEADOWSLEA L463 ^{SV}

MEADOWSLEA A476

INDEXES	
SR	HD
+\$105	+\$89

SEPTEMBER 2025 BREEDPLAN								
	CED	DTRS	GL	BW	200	400	600	MCW
EBV	+2.5	+3.1	-5.8	+2.4	+21	+50	+59	+67
Acc	64%	54%	80%	81%	82%	80%	80%	78%
Milk	SS	DC	CW	EMA	Rib Fat	Rump	RBV %	IMF %
+8	-0.7	-4	+19	+1.6	+4.1	+3.4	+0.1	+1.8
73%	77%	46%	69%	68%	69%	69%	61%	72%

Comments: A Tornado grandson out of a good old F540 cow with Crump back in the pedigree. Sire T382 was sold to Brian Butler in the 2024 Spring Sale. Lovely low birthweight, plenty of calving ease, massive fats with IMF as well and a terrific index! Well set up with clean shoulders and a nice topline.

Purchaser:	Price: \$
-------------------	------------------

Lot: 53 MEADOWSLEA V219 ^{PV}

Birth Date: 17/09/2024 **ID No:** 19134024219

MEADOWSLEA K703 ^{SV}

MEADOWSLEA N157 ^{SV}

MEADOWSLEA L086

TURIHAUA LOYALTY L44

MEADOWSLEA P615 ^{SV}

MEADOWSLEA H223

INDEXES	
SR	HD
+\$138	+\$84

SEPTEMBER 2025 BREEDPLAN								
	CED	DTRS	GL	BW	200	400	600	MCW
EBV	-0.5	+2.9	-5.4	+4.1	+34	+60	+63	+46
Acc	63%	53%	80%	81%	82%	80%	80%	78%
Milk	SS	DC	CW	EMA	Rib Fat	Rump	RBV %	IMF %
+7	+1.4	-3	+20	+3.2	+2.8	+4.7	+0.1	+2.1
73%	78%	45%	68%	68%	68%	69%	61%	72%

Comments: Goes back to Meat Machine and Crump through the sire side, another moderate birthweight bull with good calving ease. Easy doing type with strong fats and a good backend. Great pick for heifers once again.

Purchaser:	Price: \$
-------------------	------------------

YEARLING ANGUS BULLS

Lot: 54 MEADOWSLEA V204 ^{PV}

Birth Date: 16/09/2024 **ID No:** 19134024204

BASIN RAINMAKER 4404 ^{PV}

KINCARDINE RAINSTORME R25 ^{PV}

KINCARDINE 17-759

MEADOWSLEA L219

MEADOWSLEA N219

MEADOWSLEA F756

INDEXES	
SR	HD
+\$127	+\$123

SEPTEMBER 2025 BREEDPLAN

	CED	DTRS	GL	BW	200	400	600	MCW
EBV	+9.1	+5.7	-7	+1.2	+40	+63	+71	+43
Acc	65%	53%	82%	82%	83%	81%	81%	78%
Milk	SS	DC	CW	EMA	Rib Fat	Rump	RBV %	IMF %
+18	+3.5	-3	+25	+8.1	+2.9	+2.7	+1	-1
73%	79%	43%	69%	69%	69%	70%	62%	73%

Comments: A scopey pen of bulls starts with this Rainstorme son and his terrific heifer mating figures. This is the Rainstorme x Crump pedigree that works so well with F540 in there as well and he also goes way back to the great Hingaia 469. Very strong calving ease, very efficient mature cow weight, low birthweight. Exceptional carcase data with a top EMA figure in the top 5%, very easy doing fats, and a top index as you'd expect. Great heifer mating option here! Check him out!!

Purchaser:

Price: \$

Lot: 55 MEADOWSLEA V245 ^{PV}

Birth Date: 20/09/2024 **ID No:** 19134024245

TURIHAUA TORNADO Q336 ^{PV}

MEADOWSLEA T382 ^{PV}

MEADOWSLEA Q152 ^{PV}

MEADOWSLEA M564 ^{SV}

MEADOWSLEA Q328 ^{PV}

MEADOWSLEA H328

INDEXES	
SR	HD
+\$160	+\$84

SEPTEMBER 2025 BREEDPLAN

	CED	DTRS	GL	BW	200	400	600	MCW
EBV	+1.7	-4.3	-5.3	+1.8	+24	+52	+56	+30
Acc	64%	53%	80%	81%	82%	80%	80%	78%
Milk	SS	DC	CW	EMA	Rib Fat	Rump	RBV %	IMF %
+14	+3.4	-8	+1	-2	+4.2	+3.2	-0.6	+3.2
72%	77%	45%	69%	68%	69%	70%	61%	73%

Comments: Another Tornado grandson out of a cow going back to M564. She is breeding well with good sons sold to Ben Finney and Johnny Butler. Super low birthweight, good calving ease, very strong fertility at the very top of the breed, with massive fats and top IMF! All this data combines to give an exceptional index. Great maternal pedigree with F540, Crump and the great old cow G1000 all featuring.

Purchaser:

Price: \$



The award-winning [yourbid](#) online selling platform was developed by the Giddings Family for their 2020 Angus Female Sale which was held during the first Covid Lockdown.

The system was further developed to incorporate on-farm and online bidding, and has been used successfully for 16 further sales at Meadowslea.

It has also been use to run a number of sheep and cattle sales for other studs both in NZ and the UK.

For all enquiries to use [yourbid](#) please contact george@yourbid.org



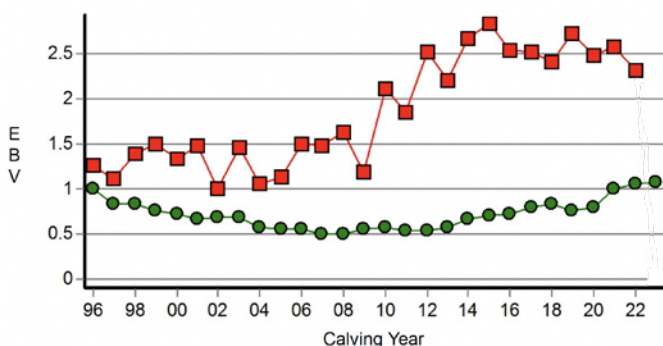
The development of the “Meadowslea Hill Country Type”

has been the result of 25 years of selecting animals that perform the best in our hill country environment. Cows that can winter easily on the hill without supplements, stay in good order, calve easily and get back in calf early every year for 10 years has been the focus of our breeding programme.

Ultra-sound scanning has confirmed to us that these easy doing cattle have higher levels of Rib and Rump fat. Science has now recognised that these higher fat levels result in heifers getting in calf earlier with higher conception rates. These higher fat levels also result in increased fertility in the whole herd with earlier rebreeding and less dry cows.

These great positive fat EBV's in the Meadowslea herd have come about simply by selecting animals that suit the Hill Country environment.

Carcase Rib Fat (mm)



- Meadowslea herd
- Australasian herd average

Graph showing improvement in fat EBVs at Meadowslea while running the herd on hill country, compared with Australasian average. From TransTasman Angus Cattle Evaluation, April 2022.

The average rib fat EBVs of the bulls in this catalogue ranks in the top 25% of the breed in NZ.

Meadowslea Proven Herd Sires



Meadowslea F540

Trait leader for short gestation and milk, with a days to calving figure in the top 5% of the breed. He ranks in the top 10% for rib fat, rump fat, and IMF. He was ranked 3rd for short gestation in the BLNZ Diary Beef Progeny Test in in 2018. His progeny also performed very strongly in the BLNZ Beef Progeny Test cohort 2 -for both growth and carcass traits. He is no longer with us but shows up in the pedigrees of most of the bulls in this catalogue.



Turihaua Crump E5

Trait leader for the all important Days to Calving at an incredible -10.1 days, as proven with over 500 recorded progeny across Australia and NZ. His daughters and grand-daughters are among the best females we have ever had. He has low birthweight, massive fat EBVs, and good IMF giving a self-replacing index in the top 10% of the breed. His progeny crossed with F540 have become legendary, and the cross with Rainstorme might be even better!

- Breed Trait Leaders for Maternal and Fertility Traits



Meadowslea Meat Machine G914

Exceptional thickness and fertility traits. He has terrific calving ease and low birthweight in the best 10% of the breed making his descendants ideal for mating heifers or dairy cows. His days to calving is strong reflecting fertility, fats are off the scale, and the all important self-replacing index in the top 5% of the breed! His son R818 was sold to Jade Park Angus, Australia, and will have a big impact on the 2025 winter catalogue.



Meadowslea P700

A product of the great F540 x Crump cross, this bull has emerged as a trait leader for IMF with an incredible EBV of +5.0 – ranking him in the top echelon anywhere! Him and his sons have ideal heifer mating figures with strong calving ease and low birthweight. His scrotal size EBV is right up there reflecting early maturity and his rib fat is also in the top 1%! He has some outstanding yearling sons on offer.

The

• FAIRLIE BAKEHOUSE •

South Canterbury

Meadowslea proudly supplies

FAIRLIE BAKEHOUSE

With the finest Angus beef

*Come and taste these
fantastic pies at our*

**BULL SALE
FRIDAY 3rd
OCTOBER**





UNMATCHED GENETICS EXPERTISE

PGG Wrightson Genetics is
New Zealand's only team of dedicated
livestock genetics specialists.

Contact your local rep for expert advice.

GREG UREN

Mid/Sth Canterbury - Livestock Rep
027 431 4051

JOE HIGGINS

Mid/Sth Canterbury - Regional
Livestock Manager
027 431 4041

SIMON EDDINGTON

Upper South Island - Genetics Rep
027 590 8612

NATHAN HUBBARD

Mid/Sth Canterbury - Dairy Rep
027 566 8243

NEIL CARTER

Mid/Sth Canterbury - Dairy Rep
027 282 1104

For more information go to
pggwrightson.co.nz/genetics



fb.com/pgwgenetics
instagram.com/pgwgenetics



Scan here
to go to our
Genetics
Hub



BUY NOW, PAY LATER!

YEARLING ANGUS BULLS

Lot: 56 MEADOWSLEA V326 ^{PV}

Birth Date: 28/09/2024 **ID No:** 19134024326

MEADOWSLEA M564 ^{SV}

MEADOWSLEA QUARTZ Q250 ^{PV}

MEADOWSLEA K710 ^{SV}

RED OAK 378

MEADOWSLEA L228 ^{SV}

MEADOWSLEA E456

INDEXES	
SR	HD
+\$90	+\$67

SEPTEMBER 2025 BREEDPLAN								
	CED	DTRS	GL	BW	200	400	600	MCW
EBV	-5.2	+0.5	-2	+3.7	+35	+66	+82	+81
Acc	65%	54%	81%	82%	83%	80%	81%	79%
Milk	SS	DC	CW	EMA	Rib Fat	Rump	RBV %	IMF %
+15	+0.9	-4	+35	+0.8	+4.1	+2	+0.1	+0.5
73%	78%	47%	70%	69%	70%	70%	63%	73%

Comments: One of these Quartz Q250 sons that are so consistent. Out of a good young cow who has been sold to The Wolds Station. Low birthweight followed by good growth and those very strong fats. Well balanced and moderate bull with handy data for heifers or cows.

Purchaser:	Price: \$
-------------------	------------------

Lot: 57 MEADOWSLEA V259 ^{PV}

Birth Date: 21/09/2024 **ID No:** 19134024259

GOLDWYN H817 ^{SV}

TURIROA PANTHER 18P241 ^{PV}

TURIROA L120

MEADOWSLEA G804

MEADOWSLEA J411

MEADOWSLEA G885

INDEXES	
SR	HD
+\$124	+\$104

SEPTEMBER 2025 BREEDPLAN								
	CED	DTRS	GL	BW	200	400	600	MCW
EBV	+4.4	+5.6	-5.3	+3.7	+33	+60	+80	+76
Acc	64%	54%	81%	82%	83%	81%	81%	78%
Milk	SS	DC	CW	EMA	Rib Fat	Rump	RBV %	IMF %
+14	+2.3	-6	+26	+2.6	+4.3	+4.4	-0.5	+1.8
74%	79%	46%	70%	69%	69%	70%	62%	73%

Comments: A Panther son going back to a great old cow with tonnes of longevity. She has had 10 calves in 10 years including good daughters sold to Ben Finney and young Gilbert Giddings. Moderate birthweight, very strong calving ease, good growth, massive fats, and plenty of IMF too! Very handy data across the page!

Purchaser:	Price: \$
-------------------	------------------

YEARLING ANGUS BULLS

Lot: 58 MEADOWSLEA V404 ^{PV}

Birth Date: 05/10/2024 **ID No:** 19134024404

MEADOWSLEA M429
MEADOWSLEA R646 ^{PV}
MEADOWSLEA M542
TAIMATE LAZARUS L12 ^{PV}
MEADOWSLEA Q218 ^{PV}
MEADOWSLEA J626

INDEXES	
SR	HD
+\$123	+\$127

SEPTEMBER 2025 BREEDPLAN								
	CED	DTRS	GL	BW	200	400	600	MCW
EBV	+8.5	+9.2	-3.8	+2.1	+34	+69	+95	+74
Acc	65%	55%	81%	82%	82%	81%	81%	78%
Milk	SS	DC	CW	EMA	Rib Fat	Rump	RBV %	IMF %
+24	+0	-6	+44	+0.6	+1.8	+2.4	+0.1	+2.1
73%	79%	46%	69%	69%	69%	70%	62%	73%

Comments: A brick of a bull to start this next pen with a very strong pedigree. By R646 and out of a Lazarus cow. Super heifer mating figures with very low birthweight and very good calving ease in the very highest percentile of the breed, with ample growth too. Lovely hindquarter and well-balanced bull - worthy of a good look.

Purchaser:	Price: \$
-------------------	------------------

Lot: 59 MEADOWSLEA V240 ^{PV}

Birth Date: 19/09/2024 **ID No:** 19134024240

TURIHAUA AVENGER N59 ^{SV}
MEADOWSLEA T238 ^{PV}
MEADOWSLEA N177
MEADOWSLEA R578 ^{PV}
MEADOWSLEA T495 ^{PV}
MEADOWSLEA J402

INDEXES	
SR	HD
+\$121	+\$103

SEPTEMBER 2025 BREEDPLAN								
	CED	DTRS	GL	BW	200	400	600	MCW
EBV	-0.8	-5.1	-6.5	+5.8	+38	+81	+107	+108
Acc	61%	51%	79%	80%	81%	78%	79%	76%
Milk	SS	DC	CW	EMA	Rib Fat	Rump	RBV %	IMF %
+19	+2.6	-5	+40	+6.7	+1.7	+1.8	+1.2	+1.4
70%	76%	41%	66%	65%	66%	67%	57%	70%

Comments: Back to the well-known Turihaua Avenger on the paternal side and with the \$32,000 Woodbank 7017 on the maternal side ensuring some real grunt. A strong bull with plenty of growth suitable for adult cows. Good fertility, very strong muscle and fats with IMF. A solid powerful type ready to mate adult cows.

Purchaser:	Price: \$
-------------------	------------------

YEARLING ANGUS BULLS

Lot: 60 MEADOWSLEA V405 ^{PV}

Birth Date: 05/10/2024 **ID No:** 19134024405

MEADOWSLEA L226 ^{SV}

MEADOWSLEA P700 ^{SV}

MEADOWSLEA H117 ^{SV}

MEADOWSLEA M452

MEADOWSLEA R708 ^{PV}

MEADOWSLEA L339 ^{SV}

INDEXES	
SR	HD
+\$102	+\$105

SEPTEMBER 2025 BREEDPLAN								
	CED	DTRS	GL	BW	200	400	600	MCW
EBV	+5	+0	-4	+2.7	+26	+57	+68	+43
Acc	65%	54%	80%	82%	82%	80%	81%	78%
Milk	SS	DC	CW	EMA	Rib Fat	Rump	RBV %	IMF %
+17	+2.6	-3	+11	+3.8	+2.8	+1.9	+0.4	+1.9
73%	79%	47%	69%	69%	69%	70%	62%	73%

Comments: A son of P700, out of a very good cow by M452 going back to the \$100,000 Rangatira 13-38. She produced a cracking yearling sold at lot 30 in last year's sale to Mark Nicholson. Low birthweight once again with calving ease, very good muscle, plenty of fat and the IMF we always get from P700. Great heifer option here too.

Purchaser:	Price: \$
-------------------	------------------

Lot: 61 MEADOWSLEA V122 ^{PV}

Birth Date: 01/09/2024 **ID No:** 19134024122

BASIN RAINMAKER 4404 ^{PV}

KINCARDINE RAINSTORME R25 ^{PV}

KINCARDINE 17-759

MEADOWSLEA R572 ^{PV}

MEADOWSLEA T135 ^{PV}

MEADOWSLEA R863 ^{PV}

INDEXES	
SR	HD
+\$120	+\$109

SEPTEMBER 2025 BREEDPLAN								
	CED	DTRS	GL	BW	200	400	600	MCW
EBV	+3.7	+5.6	-6.4	+3.4	+39	+74	+89	+54
Acc	64%	51%	81%	82%	82%	80%	81%	78%
Milk	SS	DC	CW	EMA	Rib Fat	Rump	RBV %	IMF %
+27	+2.5	-4	+40	+8.2	+3.5	+1.7	+0.7	-0.2
71%	78%	40%	68%	68%	68%	69%	60%	72%

Comments: A Rainstorme son here, going back to R572, our 2022 Lot 1 bull sold to Red Oak stud at \$20,000. Another nice low birthweight option with plenty of calving ease, followed by good strong growth and massive EMA. Good strong fats as well. A typical Rainstorme son with a great pullup. Worth checking closely with a double up of Reality, and Crump also in the pedigree. Great data set across the page!

Purchaser:	Price: \$
-------------------	------------------

YEARLING ANGUS BULLS

Lot: 62 MEADOWSLEA V215 ^{PV}

Birth Date: 17/09/2024 **ID No:** 19134024215

TURIHAUA JUPITER Q353 ^{PV}

MEADOWSLEA T178 ^{SV}

MEADOWSLEA Q252 ^{PV}

GLANWORTH WAIGROUP 0816 ^{SV}

MEADOWSLEA G888

MEADOWSLEA D239

INDEXES

SR

HD

+\$105

+\$106

SEPTEMBER 2025 BREEDPLAN

	CED	DTRS	GL	BW	200	400	600	MCW
EBV	+4.5	-0.9	-5.9	+4.2	+37	+72	+89	+64
Acc	63%	53%	80%	81%	81%	79%	80%	77%
Milk	SS	DC	CW	EMA	Rib Fat	Rump	RBV %	IMF %
+17	+0.9	-4	+50	-2.4	+1.5	+1.7	-0.2	+0.2
72%	77%	45%	68%	67%	68%	68%	60%	71%

Comments: A son of T178, the bull sold at lot 3 in our 2024 bull sale to Rocky Point Station. He has moderate birthweight and good calving ease. Easy doing with nice fats and a clean shoulder setup. Well balanced, nicely put-together bull. A strong proven NZ pedigree.

Purchaser:

Price: \$

Lot: 63 MEADOWSLEA V292 ^{PV}

Birth Date: 25/09/2024 **ID No:** 19134024292

MEADOWSLEA M429

MEADOWSLEA R646 ^{PV}

MEADOWSLEA M542

MEADOWSLEA K703 ^{SV}

MEADOWSLEA P726 ^{SV}

MEADOWSLEA K923

INDEXES

SR

HD

+\$160

+\$112

SEPTEMBER 2025 BREEDPLAN

	CED	DTRS	GL	BW	200	400	600	MCW
EBV	+5.5	+6.1	-2.4	+1.9	+22	+60	+77	+47
Acc	64%	53%	80%	82%	82%	80%	81%	78%
Milk	SS	DC	CW	EMA	Rib Fat	Rump	RBV %	IMF %
+19	+1.1	-6	+32	+3.4	+6	+7.7	+0.5	+0.6
72%	78%	45%	69%	68%	69%	69%	62%	72%

Comments: An R646 son going back to Meat Machine with Crump and Braveheart featuring in the pedigree. Top heifer mating data here with super low birthweight, heaps of calving ease, and good fertility. Super easy doing ability with fats at the top of the breed. All this data combines for a top self-replacing index!

Purchaser:

Price: \$

YEARLING ANGUS BULLS

Lot: 64 MEADOWSLEA V313 ^{PV}

Birth Date: 27/09/2024 **ID No:** 19134024313

MEADOWSLEA M564 ^{SV}

MEADOWSLEA QUARTZ Q250 ^{PV}

MEADOWSLEA K710 ^{SV}

MEADOWSLEA M1016

MEADOWSLEA P687 ^{SV}

MEADOWSLEA M475

INDEXES	
SR	HD
+\$144	+\$107

SEPTEMBER 2025 BREEDPLAN								
	CED	DTRS	GL	BW	200	400	600	MCW
EBV	+6.3	+7.5	-1.4	-0.2	+20	+50	+66	+28
Acc	64%	52%	81%	82%	82%	80%	81%	78%
Milk	SS	DC	CW	EMA	Rib Fat	Rump	RBV %	IMF %
+19	+4.2	-6	+13	+3.6	+5.1	+5.6	-0.3	+2.6
72%	77%	44%	69%	68%	69%	69%	61%	72%

Comments: Another of these impressive Quartz Q250 sons with consistently good figures for mating heifers. Super low birthweight, lots of calving ease, very strong fertility, fats, muscle and very good IMF. All this impressive data across the page combines to generate an index in the top 20% for the breed in NZ.

Purchaser:	Price: \$
-------------------	------------------

Lot: 65 MEADOWSLEA V430 ^{PV}

Birth Date: 06/10/2024 **ID No:** 19134024430

MEADOWSLEA M564 ^{SV}

MEADOWSLEA QUARTZ Q250 ^{PV}

MEADOWSLEA K710 ^{SV}

TURIHAUA LOYALTY L44

MEADOWSLEA P858 ^{SV}

MEADOWSLEA K899

INDEXES	
SR	HD
+\$122	+\$77

SEPTEMBER 2025 BREEDPLAN								
	CED	DTRS	GL	BW	200	400	600	MCW
EBV	-4.6	+1.5	-5.7	+4.5	+40	+77	+96	+79
Acc	65%	54%	81%	82%	82%	80%	81%	78%
Milk	SS	DC	CW	EMA	Rib Fat	Rump	RBV %	IMF %
+13	+3.4	-5	+37	+0.9	+1.9	+0.7	-0.1	+2.3
73%	77%	46%	69%	68%	69%	70%	61%	72%

Comments: Here is yet another Quartz son with strong data set. Out of a cow going back to Turihaua Loyalty and Meat Machine. Very strong growth, top fertility traits and plenty of IMF.

Purchaser:	Price: \$
-------------------	------------------

YEARLING ANGUS BULLS

Lot: 66 MEADOWSLEA V359 ^{PV}

Birth Date: 01/10/2024 **ID No:** 19134024359

TURIHAUA JUPITER Q353 ^{PV}

MEADOWSLEA T178 ^{SV}

MEADOWSLEA Q252 ^{PV}

MEADOWSLEA N166 ^{SV}

MEADOWSLEA R654 ^{PV}

MEADOWSLEA N438

INDEXES	
SR	HD
+\$150	+\$97

SEPTEMBER 2025 BREEDPLAN

	CED	DTRS	GL	BW	200	400	600	MCW
EBV	+4.1	+3.3	-10.8	+3.1	+28	+57	+60	+42
Acc	63%	52%	80%	81%	82%	79%	80%	77%
Milk	SS	DC	CW	EMA	Rib Fat	Rump	RBV %	IMF %
+14	-0.2	-5	+29	+2.6	+4.9	+6.9	+0.1	-0.6
71%	77%	44%	68%	67%	67%	68%	60%	71%

Comments: Nice T178 son to lead in this pen of thick, chunky types. Out of a cow by N166 so strength comes from both sides! Grandam N438 is a top cow with sons sold to Ben Finney and Woodstock Downs. V359 has very strong easy doing fats ranking in the top 1% for the breed. All this data combines for a top index! Nice tidy bull.

Purchaser:

Price: \$

Lot: 67 MEADOWSLEA V407 ^{PV}

Birth Date: 05/10/2024 **ID No:** 19134024407

GOLDWYN H817 ^{SV}

TURIROA PANTHER 18P241 ^{PV}

TURIROA L120

MEADOWSLEA P565 ^{SV}

MEADOWSLEA R608 ^{PV}

MEADOWSLEA P775 ^{SV}

INDEXES	
SR	HD
+\$90	+\$83

SEPTEMBER 2025 BREEDPLAN

	CED	DTRS	GL	BW	200	400	600	MCW
EBV	-2.1	+2.1	-0.8	+4.2	+34	+64	+89	+74
Acc	64%	54%	81%	81%	82%	80%	81%	78%
Milk	SS	DC	CW	EMA	Rib Fat	Rump	RBV %	IMF %
+14	+2.2	-3	+28	-1.1	+3.4	+4.9	+0.1	-0.1
73%	78%	45%	69%	69%	69%	70%	62%	73%

Comments: A Panther son going back to Lazarus on the dam side. Moderate birthweight, calving ease and short gestation, followed by good growth with exceptional easy doing fats. Nice clean shoulder, good topline, thick, deep, moderate type.

Purchaser:

Price: \$

YEARLING ANGUS BULLS

Lot: 68 MEADOWSLEA V270 ^{PV}

Birth Date: 22/09/2024 **ID No:** 19134024270

GOLDWYN H817 ^{SV}

TURIROA PANTHER 18P241 ^{PV}

TURIROA L120

RANGATIRA 16209 ^{SV}

MEADOWSLEA R687 ^{PV}

MEADOWSLEA N313

INDEXES	
SR	HD
+\$109	+\$113

SEPTEMBER 2025 BREEDPLAN								
	CED	DTRS	GL	BW	200	400	600	MCW
EBV	+3.7	+8.6	-6.2	+2.6	+40	+81	+106	+103
Acc	64%	54%	81%	82%	82%	80%	81%	78%
Milk	SS	DC	CW	EMA	Rib Fat	Rump	RBV %	IMF %
+20	+2	-5	+48	-2.4	+2	+3.7	-0.4	+1.5
73%	78%	46%	69%	69%	69%	70%	63%	73%

Comments: Another Panther son with exceptional clean shoulders and very low birthweight for easy calving, followed by very good growth. A clean cut, easy doing type with a good topline. Ideal for heifers as well as adult cows. Very handy data right across the page.

Purchaser:	Price: \$
-------------------	------------------

Lot: 69 MEADOWSLEA V334 ^{PV}

Birth Date: 29/09/2024 **ID No:** 19134024334

GOLDWYN H817 ^{SV}

TURIROA PANTHER 18P241 ^{PV}

TURIROA L120

MEADOWSLEA M564 ^{SV}

MEADOWSLEA Q340 ^{PV}

MEADOWSLEA M542

INDEXES	
SR	HD
+\$139	+\$92

SEPTEMBER 2025 BREEDPLAN								
	CED	DTRS	GL	BW	200	400	600	MCW
EBV	+0.9	+1.5	-9.1	+2.2	+31	+66	+82	+68
Acc	64%	54%	81%	82%	82%	80%	81%	78%
Milk	SS	DC	CW	EMA	Rib Fat	Rump	RBV %	IMF %
+13	+1.5	-6	+31	+0.1	+5.4	+5.5	-0.5	+1.9
72%	78%	46%	69%	68%	69%	69%	62%	72%

Comments: A third consecutive Panther son showing how consistent they are! Very suitable for heifer mating with low birthweight and very short gestation. Back to M564 and the great old cow G1000, so some carcass data as well with good IMF and a good index. Another thick, moderate type ideal for heifers as well as adult cows.

Purchaser:	Price: \$
-------------------	------------------

YEARLING ANGUS BULLS

Lot: 70 MEADOWSLEA V336 ^{PV}

Birth Date: 29/09/2024 **ID No:** 19134024336

MEADOWSLEA M564 ^{SV}

MEADOWSLEA QUARTZ Q250 ^{PV}

MEADOWSLEA K710 ^{SV}

RATANUI LAD 21

MEADOWSLEA M1084

MEADOWSLEA 220

INDEXES	
SR	HD
+\$114	+\$93

SEPTEMBER 2025 BREEDPLAN								
	CED	DTRS	GL	BW	200	400	600	MCW
EBV	+2.6	+6.5	-1.6	+1.2	+24	+50	+66	+40
Acc	66%	55%	81%	82%	83%	81%	81%	79%
Milk	SS	DC	CW	EMA	Rib Fat	Rump	RBV %	IMF %
+17	+2.9	-5	+15	+3.4	+4	+4.6	-0.6	+4
74%	78%	47%	70%	69%	70%	70%	63%	73%

Comments: Another of these impressive Q250 sons that are so consistent. Super heifer mating figures with low birthweight, lots of calving ease, good fertility, muscle and fats that are really strong. V336 has one of the highest IMF figures you'll find! His dam is breeding well with a top daughter sold to Stoneburn Angus. Worth a good look.

Purchaser:	Price: \$
-------------------	------------------

Lot: 71 MEADOWSLEA V185 ^{PV}

Birth Date: 14/09/2024 **ID No:** 19134024185

MEADOWSLEA F540

MEADOWSLEA M564 ^{SV}

MEADOWSLEA G1000 ^{SV}

TURIHAUA LOYALTY L44

MEADOWSLEA P628 ^{SV}

MEADOWSLEA J447

INDEXES	
SR	HD
+\$163	+\$99

SEPTEMBER 2025 BREEDPLAN								
	CED	DTRS	GL	BW	200	400	600	MCW
EBV	-0.3	+0.2	-7.1	+2	+42	+84	+98	+106
Acc	66%	56%	82%	82%	83%	81%	82%	79%
Milk	SS	DC	CW	EMA	Rib Fat	Rump	RBV %	IMF %
+8	+2.4	-5	+30	+3.7	+3.6	+3.7	+0.5	+0.5
75%	79%	51%	71%	70%	71%	71%	64%	74%

Comments: Similarly bred to the last, by Q250's sire M564. The same phenomenal heifer mating figures with exceptionally short gestation, low birthweight followed by top growth, impressive carcass data, and a top index. Dam is breeding strongly with 2 daughters sold for stud transfer. Another bull worth close inspection!

Purchaser:	Price: \$
-------------------	------------------

YEARLING ANGUS BULLS

Lot: 72 MEADOWSLEA V130 ^{PV}

Birth Date: 04/09/2024 **ID No:** 19134024130

MEADOWSLEA P674 ^{SV}

MEADOWSLEA T172 ^{PV}

MEADOWSLEA P893 ^{SV}

MEADOWSLEA F540

MEADOWSLEA T277 ^{PV}

MEADOWSLEA Q378 ^{PV}

INDEXES	
SR	HD
+\$180	+\$99

SEPTEMBER 2025 BREEDPLAN

	CED	DTRS	GL	BW	200	400	600	MCW
EBV	+3.2	+4.7	-8.1	+0.5	+25	+57	+70	+60
Acc	64%	54%	81%	81%	82%	79%	80%	77%
Milk	SS	DC	CW	EMA	Rib Fat	Rump	RBV %	IMF %
+12	+2.6	-8	+22	+3.9	+5	+5.3	+0.6	+0.1
71%	77%	46%	68%	67%	68%	69%	61%	72%

Comments: Sired by T172, our top price bull in 2024 sold to Glen R Angus, and out of an F540 cow. Top heifer mating figures again with short gestation and very sharp fertility with one of the shortest days to calving numbers around. Top muscle with massive fats. All this data means he gets an index at the very top of the breed.

Purchaser:

Price: \$

Lot: 73 MEADOWSLEA V520 ^{PV}

Birth Date: 21/10/2024 **ID No:** 19134024520

PINEBANK 41/16 ^{SV}

GLEN R S125 ^{SV}

GLEN R 14079

MEADOWSLEA MEAT MACHINE G914 ^{SV}

MEADOWSLEA L339 ^{SV}

MEADOWSLEA F570

INDEXES	
SR	HD
+\$137	+\$82

SEPTEMBER 2025 BREEDPLAN

	CED	DTRS	GL	BW	200	400	600	MCW
EBV	-6.2	-6.2	-1	+5.8	+50	+95	+115	+93
Acc	60%	50%	78%	80%	80%	78%	79%	76%
Milk	SS	DC	CW	EMA	Rib Fat	Rump	RBV %	IMF %
+16	+1.6	-4	+62	+3.9	-1.3	-1.2	+1.8	-2.6
70%	75%	42%	66%	65%	66%	66%	58%	69%

Comments: Very late born bull and the only son in the sale by Glen R S125, back to Pinebank blood with Meat Machine on the dam side. Exceptional growth translates into big carcase weight with plenty of muscle.

Purchaser:

Price: \$

YEARLING ANGUS BULLS

Lot: 74 MEADOWSLEA V174 ^{PV}

Birth Date: 11/09/2024 **ID No:** 19134024174

SUDELEY VIKING 18101 ^{SV}

SUDELEY BJORN S80 ^{SV}

SUDELEY 1141

MEADOWSLEA R623 ^{PV}

MEADOWSLEA T188 ^{PV}

MEADOWSLEA R914 ^{PV}

INDEXES

SR

HD

+\$85

+\$79

SEPTEMBER 2025 BREEDPLAN

	CED	DTRS	GL	BW	200	400	600	MCW
EBV	+0.2	+2.3	-2.1	+3.3	+26	+43	+54	+40
Acc	63%	52%	80%	81%	81%	79%	79%	77%
Milk	SS	DC	CW	EMA	Rib Fat	Rump	RBV %	IMF %
+18	+1.7	-4	+14	+2	+2.8	+2.8	-0.3	+3.4
71%	76%	41%	67%	66%	67%	68%	59%	71%

Comments: The first son catalogued by Sudeley Bjorn. Strong pedigree here with grandam R914 sold to Jade Park Angus in Australia. Another bull with great heifer mating figures with low birthweight. Big easy doing fats and real strength in the IMF department mean there will be plenty of options for his progeny. An upstanding, clean shouldered bull worth a good look.

Purchaser:

Price: \$

Lot: 75 MEADOWSLEA V548 ^{PV}

Birth Date: 31/10/2024 **ID No:** 19134024548

MEADOWSLEA M429

MEADOWSLEA R646 ^{PV}

MEADOWSLEA M542

MEADOWSLEA J481

MEADOWSLEA L086

MEADOWSLEA H152

INDEXES

SR

HD

+\$44

+\$89

SEPTEMBER 2025 BREEDPLAN

	CED	DTRS	GL	BW	200	400	600	MCW
EBV	-1	-3.7	-4.7	+5.4	+32	+69	+93	+88
Acc	63%	52%	80%	82%	82%	81%	81%	78%
Milk	SS	DC	CW	EMA	Rib Fat	Rump	RBV %	IMF %
+22	+1.5	-1	+33	+0	+2.4	+4.1	+0	+0.9
73%	79%	45%	69%	68%	69%	70%	62%	72%

Comments: An R646 son here out of a very good cow whose first son was sold to McFadzean Angus at \$14,000. V458 is a nice upstanding bull with a bit of scale, strong growth, clean shoulders and some presence about him. Ready to mate adult cows.

Purchaser:

Price: \$

YEARLING ANGUS BULLS

Lot: 76 MEADOWSLEA V182^{PV}

Birth Date: 13/09/2024 **ID No:** 19134024182

MEADOWSLEA L226^{SV}

MEADOWSLEA P700^{SV}

MEADOWSLEA H117^{SV}

MEADOWSLEA K018

MEADOWSLEA M1014

MEADOWSLEA K950

INDEXES	
SR	HD
+\$114	+\$114

SEPTEMBER 2025 BREEDPLAN								
	CED	DTRS	GL	BW	200	400	600	MCW
EBV	+6.2	+0.6	-8.5	+1.2	+36	+72	+89	+59
Acc	65%	54%	80%	82%	83%	81%	81%	78%
Milk	SS	DC	CW	EMA	Rib Fat	Rump	RBV %	IMF %
+26	+1.5	-6	+40	-0.7	+3.2	+2	-0.6	+2.5
74%	79%	47%	70%	69%	70%	70%	63%	73%

Comments: Another of the P700 sons with exceptional easy calving heifer figures once again. Short gestation and low birthweight. Big easy-doing fats and the strong IMF we always get from this sire.

Purchaser:	Price: \$
-------------------	------------------

Lot: 77 MEADOWSLEA V472^{PV}

Birth Date: 12/10/2024 **ID No:** 19134024472

MEADOWSLEA P593^{SV}

MEADOWSLEA T321^{PV}

MEADOWSLEA P573^{SV}

MEADOWSLEA M429

MEADOWSLEA P572^{SV}

MEADOWSLEA M588

INDEXES	
SR	HD
+\$127	+\$74

SEPTEMBER 2025 BREEDPLAN								
	CED	DTRS	GL	BW	200	400	600	MCW
EBV	-5.7	+0.9	-3.3	+4.1	+42	+79	+97	+84
Acc	64%	54%	81%	82%	82%	80%	81%	78%
Milk	SS	DC	CW	EMA	Rib Fat	Rump	RBV %	IMF %
+17	+2.3	-6	+36	+2.8	+2.4	+1.6	-0.2	+2.7
73%	78%	44%	69%	68%	69%	70%	61%	73%

Comments: Another nice moderate birthweight bull with clean shoulders and a nice topline. Goes back to the \$100,000 Rangatira 13-38 and Panther. Strong fertility, good muscle, and scanned with the best rib and rump fat in the mob with plenty of IMF.

Purchaser:	Price: \$
-------------------	------------------

YEARLING ANGUS BULLS

Lot: 78 MEADOWSLEA V360 ^{PV}

Birth Date: 01/10/2024 **ID No:** 19134024360

TURIROA PANTHER 18P241 ^{PV}

MEADOWSLEA T271 ^{PV}

MEADOWSLEA Q213 ^{PV}

TAIMATE LAZARUS L12 ^{PV}

MEADOWSLEA P568 ^{SV}

MEADOWSLEA H274

INDEXES	
SR	HD
+\$152	+\$110

SEPTEMBER 2025 BREEDPLAN								
	CED	DTRS	GL	BW	200	400	600	MCW
EBV	+6	+4	-6	+2.7	+40	+68	+76	+69
Acc	67%	58%	83%	82%	83%	81%	82%	79%
Milk	SS	DC	CW	EMA	Rib Fat	Rump	RBV %	IMF %
+7	+1.6	-6	+35	-0.7	+1	+2.7	-0.5	+1.7
75%	79%	47%	70%	69%	70%	71%	63%	74%

Comments: Another bull with strong heifer mating figures - great calving ease, short gestation, and good fertility which combine for a good index. Great length and topline to him and out of a top breeding Lazarus cow who has bred a very good bull to the Oldhams at Bellvue.

Purchaser:	Price: \$
-------------------	------------------

Lot: 79 MEADOWSLEA V464 ^{PV}

Birth Date: 11/10/2024 **ID No:** 19134024464

TURIROA PANTHER 18P241 ^{PV}

MEADOWSLEA T271 ^{PV}

MEADOWSLEA Q213 ^{PV}

GLANWORTH WAIGROUP 0816 ^{SV}

MEADOWSLEA H201

MEADOWSLEA B676

INDEXES	
SR	HD
+\$143	+\$69

SEPTEMBER 2025 BREEDPLAN								
	CED	DTRS	GL	BW	200	400	600	MCW
EBV	-5	-2.2	-1	+5.5	+34	+67	+81	+54
Acc	65%	55%	81%	82%	82%	80%	81%	78%
Milk	SS	DC	CW	EMA	Rib Fat	Rump	RBV %	IMF %
+9	-0.6	-5	+41	-0.2	+4	+4	+0.4	-0.2
74%	78%	47%	69%	68%	69%	70%	62%	73%

Comments: A clean shouldered bull with a nice outlook and great topline, by the same sire as the last lot. This time out of a top breeding 13-year-old cow who has had top progeny all her life. Good easy doing fats with a strong hindquarter and an impressive index. A nice deep bodied type.

Purchaser:	Price: \$
-------------------	------------------

YEARLING ANGUS BULLS

Lot: 80 MEADOWSLEA V465 ^{PV}

Birth Date: 11/10/2024 **ID No:** 19134024465

MEADOWSLEA M429

MEADOWSLEA R646 ^{PV}

MEADOWSLEA M542

MEADOWSLEA L226 ^{SV}

MEADOWSLEA Q252 ^{PV}

MEADOWSLEA L248 ^{SV}

INDEXES	
SR	HD
+\$107	+\$111

SEPTEMBER 2025 BREEDPLAN

	CED	DTRS	GL	BW	200	400	600	MCW
EBV	+2.9	-0.3	-7.2	+4.3	+37	+79	+98	+91
Acc	64%	54%	81%	82%	83%	81%	81%	78%
Milk	SS	DC	CW	EMA	Rib Fat	Rump	RBV %	IMF %
+18	+0.4	-3	+39	+3.1	-0.8	-0.7	+1.8	-1.7
72%	79%	46%	69%	69%	69%	70%	62%	73%

Comments: An R646 with moderate birthweight, short gestation and then very strong growth. Dam is a top cow who bred T178 who was used as a yearling and has sons in this catalogue. Scanned very well for IMF. A sound type with a good bit of stretch and scale about him. Suitable for heifers and cows.

Purchaser:

Price: \$

Lot: 81 MEADOWSLEA V386 ^{PV}

Birth Date: 03/10/2024 **ID No:** 19134024386

MEADOWSLEA M564 ^{SV}

MEADOWSLEA QUARTZ Q250 ^{PV}

MEADOWSLEA K710 ^{SV}

MEADOWSLEA J457

MEADOWSLEA L157 ^{SV}

MEADOWSLEA J646

INDEXES	
SR	HD
+\$116	+\$89

SEPTEMBER 2025 BREEDPLAN

	CED	DTRS	GL	BW	200	400	600	MCW
EBV	+2.3	+5.1	-5	+0.9	+23	+48	+62	+39
Acc	66%	54%	82%	82%	83%	80%	81%	78%
Milk	SS	DC	CW	EMA	Rib Fat	Rump	RBV %	IMF %
+28	+3.6	-7	+8	+1.9	+6.5	+6.9	-1.2	+4.3
73%	78%	46%	70%	69%	69%	70%	62%	73%

Comments: Another Quartz Q250 son, this time going back to Reality so a double up of top figures for heifer mating. Very strong pedigree with dam breeding very well including S402 who was sold at lot 3 in our 2022 sale to Corey Roulston for \$17,500. V386 has calving ease, very low birthweight, terrific fertility and incredible fats at the top end of the job with massive IMF at 4.3! Worth a close look.

Purchaser:

Price: \$

YEARLING ANGUS BULLS

Lot: 82 MEADOWSLEA V342 ^{PV}

Birth Date: 30/09/2024 **ID No:** 19134024342

TURIHAUA TORNADO Q336 ^{PV}

MEADOWSLEA T382 ^{PV}

MEADOWSLEA Q152 ^{PV}

MEADOWSLEA L240

MEADOWSLEA N499

MEADOWSLEA G950

INDEXES	
SR	HD
+\$137	+\$95

SEPTEMBER 2025 BREEDPLAN								
	CED	DTRS	GL	BW	200	400	600	MCW
EBV	+3.6	+1.6	-3.7	+2.3	+24	+52	+61	+48
Acc	51%	38%	51%	72%	68%	63%	64%	62%
Milk	SS	DC	CW	EMA	Rib Fat	Rump	RBV %	IMF %
+10	+2.1	-5	+15	+1.5	+3.2	+3.6	+0.3	+1
53%	54%	35%	54%	49%	51%	51%	46%	50%

Comments: We start this next paddock of bulls with a Tornado grandson with terrific low birthweight and calving ease. He has good fertility traits and lovely easy doing fats on him. A nice deep bodied, clean shouldered, and very sound bull typical of this bloodline. Great heifer bull.

Purchaser:	Price: \$
-------------------	------------------

Lot: 83 MEADOWSLEA V553 ^{PV}

Birth Date: 01/11/2024 **ID No:** 19134024553

GOLDWYN H817 ^{SV}

TURIROA PANTHER 18P241 ^{PV}

TURIROA L120

KAYJAY CRAMPON K16

MEADOWSLEA N151

MEADOWSLEA J533

INDEXES	
SR	HD
+\$83	+\$85

SEPTEMBER 2025 BREEDPLAN								
	CED	DTRS	GL	BW	200	400	600	MCW
EBV	-1.7	+5.2	-4.5	+3.6	+38	+74	+102	+106
Acc	63%	53%	80%	81%	82%	80%	80%	78%
Milk	SS	DC	CW	EMA	Rib Fat	Rump	RBV %	IMF %
+8	+0.4	-3	+46	-5.6	+2.6	+3.6	-0.4	-0.4
73%	77%	43%	69%	68%	69%	69%	62%	72%

Comments: A Panther son, going back to KayJay Crampon with a good sound cow in the background. Good calving ease and nice low birthweight followed by very strong growth. Good sound type, easy doing, well balanced and suitable for cows and heifers.

Purchaser:	Price: \$
-------------------	------------------

YEARLING ANGUS BULLS

Lot: 84 MEADOWSLEA V406 ^{PV}

Birth Date: 05/10/2024 **ID No:** 19134024406

TURIHAUA CRUMP E5 ^{SV}

MEADOWSLEA N166 ^{SV}

MEADOWSLEA G922 ^{SV}

MEADOWSLEA L226 ^{SV}

MEADOWSLEA Q338 ^{PV}

MEADOWSLEA M643

INDEXES	
SR	HD
+\$92	+\$61

SEPTEMBER 2025 BREEDPLAN								
	CED	DTRS	GL	BW	200	400	600	MCW
EBV	-5.6	-3.9	-1.1	+5.6	+31	+57	+70	+61
Acc	66%	56%	82%	82%	83%	81%	82%	79%
Milk	SS	DC	CW	EMA	Rib Fat	Rump	RBV %	IMF %
+12	+1	-4	+12	+2.7	+3.2	+2	-0.3	+2.8
74%	80%	51%	71%	71%	71%	72%	65%	74%

Comments: A son of N166, out of a cow by L226 so very well bred. Solid, thick, and powerfully built bull with easy doing rib and rump fats plus very good IMF. Another bull worth a close look, he will develop into a good strong sire!

Purchaser:	Price: \$
-------------------	------------------

Lot: 85 MEADOWSLEA V545 ^{PV}

Birth Date: 30/10/2024 **ID No:** 19134024545

MEADOWSLEA M564 ^{SV}

MEADOWSLEA QUARTZ Q250 ^{PV}

MEADOWSLEA K710 ^{SV}

RATANUI LAD 21

MEADOWSLEA L351

MEADOWSLEA D168

INDEXES	
SR	HD
+\$82	+\$103

SEPTEMBER 2025 BREEDPLAN								
	CED	DTRS	GL	BW	200	400	600	MCW
EBV	+3.2	+2.2	-3.6	+2.2	+31	+62	+84	+67
Acc	56%	45%	64%	75%	69%	67%	68%	67%
Milk	SS	DC	CW	EMA	Rib Fat	Rump	RBV %	IMF %
+20	+2.4	-3	+32	+3.6	+3.8	+3.8	+0.1	+1.4
61%	63%	42%	59%	57%	60%	60%	55%	60%

Comments: These Q250s just keep coming - here is another one with top figures for heifer mating! Lots of calving ease, low birthweight, strong growth, plenty of muscle, fat, and IMF! Another good sound prospect.

Purchaser:	Price: \$
-------------------	------------------



Rural Livestock

Looking for stock?

**Let our network of over 40 agents
help you source the stock you need.**

Talk to your local Rural Livestock agent today.

Genetics Specialist:

Anthony Cox - 0272 083 071

Livestock Agents:

Aaron McCall - 0276 855 702

Donald Cooke - 0274 730 854

Quinten Botha - 0274 730 885

John Harrison - 0272 262 964

www.rurallivestock.co.nz

YEARLING ANGUS BULLS

Lot: 86 MEADOWSLEA V376 ^{PV}

Birth Date: 02/10/2024 **ID No:** 19134024376

MEADOWSLEA Q178 ^{PV}

MEADOWSLEA T191 ^{PV}

MEADOWSLEA N223

TURIROA PANTHER 18P241 ^{PV}

MEADOWSLEA S507 ^{PV}

MEADOWSLEA P697 ^{SV}

INDEXES	
SR	HD
+\$95	+\$96

SEPTEMBER 2025 BREEDPLAN								
	CED	DTRS	GL	BW	200	400	600	MCW
EBV	+1.7	+4.9	-3.4	+3.4	+35	+72	+97	+86
Acc	63%	52%	80%	80%	82%	79%	80%	76%
Milk	SS	DC	CW	EMA	Rib Fat	Rump	RBV %	IMF %
+19	+1.4	-4	+32	-5.8	+6.5	+8	-1.2	-0.1
71%	76%	41%	68%	67%	67%	68%	59%	72%

Comments: Another son of T191, the top bull sold in 2024. Well-bred bull out of a cow by Panther. Nice calving ease, low birthweight followed by strong growth, has rib and rump fats in the top 1% of the breed! Thick, deep, square, well balanced bull with a great hindquarter. Heifer or cow option here.

Purchaser:	Price: \$
-------------------	------------------

Lot: 87 MEADOWSLEA V423 ^{PV}

Birth Date: 06/10/2024 **ID No:** 19134024423

TURIHAUA TORPEDO M27 ^{SV}

TURIHAUA TORNADO Q336 ^{PV}

TURIHAUA L112

MEADOWSLEA M565

MEADOWSLEA P810 ^{SV}

MEADOWSLEA K012 ^{SV}

INDEXES	
SR	HD
+\$100	+\$88

SEPTEMBER 2025 BREEDPLAN								
	CED	DTRS	GL	BW	200	400	600	MCW
EBV	-0.8	+2.6	-3	+3.3	+30	+67	+86	+93
Acc	64%	54%	80%	82%	82%	80%	81%	78%
Milk	SS	DC	CW	EMA	Rib Fat	Rump	RBV %	IMF %
+10	+4	-4	+27	+4.2	+1.6	+0.6	+0.8	+0.2
72%	78%	46%	69%	68%	69%	70%	61%	73%

Comments: A Tornado son with all the power and soundness we would expect. Very suitable for heifer mating with nice low birthweight followed by good growth. Very strong fertility traits with a scrotal EBV at the top of the breed and good muscle and fats. Good compact bull with some balance and style about him.

Purchaser:	Price: \$
-------------------	------------------

YEARLING ANGUS BULLS

Lot: 88 MEADOWSLEA V254 ^{PV}

Birth Date: 21/09/2024 **ID No:** 19134024254

TURIHAUA TORNADO Q336 ^{PV}

MEADOWSLEA T382 ^{PV}

MEADOWSLEA Q152 ^{PV}

TURIHAUA CRUMP E5 ^{SV}

MEADOWSLEA M469

MEADOWSLEA F556

INDEXES	
SR	HD
+\$138	+\$82

SEPTEMBER 2025 BREEDPLAN								
	CED	DTRS	GL	BW	200	400	600	MCW
EBV	+0.1	+0.6	-3.9	+4.1	+23	+51	+63	+63
Acc	65%	55%	81%	81%	82%	80%	81%	78%
Milk	SS	DC	CW	EMA	Rib Fat	Rump	RBV %	IMF %
+21	+2.2	-8	+13	-0.1	+3.1	+3.1	+0.2	+1.7
73%	78%	47%	70%	69%	69%	70%	62%	74%

Comments: A Tornado grandson this time, out of a Crump cow. Moderate birthweight, exceptional fertility, great easy doing fats and lots of IMF. Thick, deep, well-balanced bull with a very good index.

Purchaser:	Price: \$
-------------------	------------------

Lot: 89 MEADOWSLEA V559 ^{PV}

Birth Date: 04/11/2024 **ID No:** 19134024559

TURIROA PANTHER 18P241 ^{PV}

MEADOWSLEA T271 ^{PV}

MEADOWSLEA Q213 ^{PV}

MEADOWSLEA F540

MEADOWSLEA P876 ^{SV}

MEADOWSLEA J543 ^{SV}

INDEXES	
SR	HD
+\$98	+\$109

SEPTEMBER 2025 BREEDPLAN								
	CED	DTRS	GL	BW	200	400	600	MCW
EBV	+4.6	+4.3	-3.4	+3.2	+33	+67	+85	+48
Acc	64%	54%	81%	82%	82%	80%	81%	78%
Milk	SS	DC	CW	EMA	Rib Fat	Rump	RBV %	IMF %
+20	+1.1	-3	+56	+3.6	+0.2	-0.2	+1.5	-2
73%	77%	46%	68%	67%	68%	69%	61%	72%

Comments: Nicely bred bull here out of an F540 cow. Terrific calving ease and low birthweight once again with good muscle. Balance and style about him, another nice heifer mating option.

Purchaser:	Price: \$
-------------------	------------------

YEARLING ANGUS BULLS

Lot: 90 MEADOWSLEA V434 ^{PV}

Birth Date: 07/10/2024 **ID No:** 19134024434

MEADOWSLEA Q178 ^{PV}

MEADOWSLEA T191 ^{PV}

MEADOWSLEA N223

MEADOWSLEA P593 ^{SV}

MEADOWSLEA S166 ^{PV}

MEADOWSLEA L154 ^{SV}

INDEXES	
SR	HD
+\$117	+\$26

SEPTEMBER 2025 BREEDPLAN								
	CED	DTRS	GL	BW	200	400	600	MCW
EBV	-16.4	-2.4	-3.3	+6.3	+47	+86	+108	+102
Acc	62%	52%	80%	81%	82%	79%	80%	77%
Milk	SS	DC	CW	EMA	Rib Fat	Rump	RBV %	IMF %
+10	+0.6	-6	+47	-5.1	+2.8	+4.2	-0.4	-0.8
71%	76%	42%	67%	67%	67%	68%	59%	71%

Comments: Another very powerful bull here by T191, the bull sold to Ratanui Angus. Strong sire suitable for mating cows. Thick, deep and square with a terrific hindquarter, strong growth and plenty of easy-doing fats on him. Will develop into an impressive sire.

Purchaser:	Price: \$
-------------------	------------------

Lot: 91 MEADOWSLEA V104 ^{PV}

Birth Date: 28/08/2024 **ID No:** 19134024104

MEADOWSLEA M564 ^{SV}

MEADOWSLEA T223 ^{PV}

MEADOWSLEA N196

MEADOWSLEA R646 ^{PV}

MEADOWSLEA T477 ^{PV}

MEADOWSLEA P516 ^{SV}

INDEXES	
SR	HD
+\$95	+\$107

SEPTEMBER 2025 BREEDPLAN								
	CED	DTRS	GL	BW	200	400	600	MCW
EBV	+5.5	+4.1	-2.6	+0.4	+26	+55	+82	+76
Acc	62%	52%	80%	81%	81%	79%	80%	77%
Milk	SS	DC	CW	EMA	Rib Fat	Rump	RBV %	IMF %
+15	+4	-4	+18	+0.3	+7	+7.7	-1.2	+2.6
71%	76%	43%	67%	67%	67%	68%	60%	71%

Comments: Superb heifer mating figures here with very low birthweight and lots of calving ease. Strong fertility data too with terrific easy doing rib and rump fats and strong IMF as well.

Purchaser:	Price: \$
-------------------	------------------

YEARLING ANGUS BULLS

Lot: 92 MEADOWSLEA V169 ^{PV}

Birth Date: 10/09/2024 **ID No:** 19134024169

MEADOWSLEA M564 ^{SV}

MEADOWSLEA T223 ^{PV}

MEADOWSLEA N196

MEADOWSLEA R646 ^{PV}

MEADOWSLEA T367 ^{PV}

MEADOWSLEA P740 ^{SV}

INDEXES	
SR	HD
+\$118	+\$84

SEPTEMBER 2025 BREEDPLAN								
	CED	DTRS	GL	BW	200	400	600	MCW
EBV	-3	-3	-0.6	+4.9	+37	+74	+99	+78
Acc	63%	52%	80%	81%	81%	79%	80%	77%
Milk	SS	DC	CW	EMA	Rib Fat	Rump	RBV %	IMF %
+21	+2.9	-6	+43	+2.7	+3.8	+4.1	-0.3	+1.7
71%	76%	44%	67%	67%	68%	68%	60%	72%

Comments: A big strong bull here with moderate birthweight, plenty of growth, very good fertility and strong fats. Powerful bull who will grow into an impressive adult sire.

Purchaser:	Price: \$
-------------------	------------------

Lot: 93 MEADOWSLEA V470 ^{PV}

Birth Date: 12/10/2024 **ID No:** 19134024470

MEADOWSLEA M429

MEADOWSLEA R646 ^{PV}

MEADOWSLEA M542

MEADOWSLEA M429

MEADOWSLEA P643 ^{SV}

MEADOWSLEA M646

INDEXES	
SR	HD
+\$154	+\$103

SEPTEMBER 2025 BREEDPLAN								
	CED	DTRS	GL	BW	200	400	600	MCW
EBV	+2.5	+8.3	-2.3	+3.6	+32	+62	+73	+73
Acc	65%	54%	81%	83%	83%	82%	82%	79%
Milk	SS	DC	CW	EMA	Rib Fat	Rump	RBV %	IMF %
+15	+1.5	-6	+27	+4.9	+1.9	+1.8	+1.5	+0.6
74%	80%	46%	70%	70%	70%	71%	63%	73%

Comments: An R646 son going back to Rangatira 13-38 on the dam side as well. Super calving ease, low birthweight, strong fertility with good muscle and scanned with plenty of IMF. Solid, deep, thick bull.

Purchaser:	Price: \$
-------------------	------------------

YEARLING ANGUS BULLS

Lot: 94 MEADOWSLEA V328 ^{PV}

Birth Date: 29/09/2024 **ID No:** 19134024328

SUDELEY VIKING 18101 ^{SV}

SUDELEY BJORN S80 ^{SV}

SUDELEY 1141

MEADOWSLEA P674 ^{SV}

MEADOWSLEA T200 ^{PV}

MEADOWSLEA M654

INDEXES	
SR	HD
+\$139	+\$92

SEPTEMBER 2025 BREEDPLAN								
	CED	DTRS	GL	BW	200	400	600	MCW
EBV	+1.9	+4.4	-1.5	+3.3	+28	+60	+78	+60
Acc	63%	52%	81%	81%	81%	79%	79%	77%
Milk	SS	DC	CW	EMA	Rib Fat	Rump	RBV %	IMF %
+13	+2.5	-7	+24	-3.1	+2.9	+3.3	-0.6	+2.4
71%	76%	40%	67%	66%	66%	67%	58%	71%

Comments: Nice heifer option here by Sudeley Bjorn, and out of a P674 daughter. Moderate birth, calving ease, and very strong fertility. Fats are strong and IMF is too, with all that contributing to a good index. Moderate framed, easy-doing type.

Purchaser:	Price: \$
-------------------	------------------

Lot: 95 MEADOWSLEA V147 ^{PV}

Birth Date: 08/09/2024 **ID No:** 19134024147

TURIHAUA APOLLO L383

TURIHAUA JUPITER Q353 ^{PV}

TURIHAUA L84

MEADOWSLEA L256

MEADOWSLEA S436 ^{PV}

MEADOWSLEA P864 ^{SV}

INDEXES	
SR	HD
+\$176	+\$58

SEPTEMBER 2025 BREEDPLAN								
	CED	DTRS	GL	BW	200	400	600	MCW
EBV	-5.2	+4.4	-5.5	+5	+23	+53	+54	+29
Acc	64%	53%	80%	81%	82%	80%	81%	78%
Milk	SS	DC	CW	EMA	Rib Fat	Rump	RBV %	IMF %
+12	+1.5	-8	+14	-1.6	+3.5	+3.8	+0.4	+0.8
71%	77%	45%	69%	68%	69%	69%	62%	72%

Comments: Thick, deep-bodied Jupiter son with calving ease and short gestation. Fertility figures are exceptional with wonderful easy-doing fats, which all combine for another top index!

Purchaser:	Price: \$
-------------------	------------------

YEARLING ANGUS BULLS

Lot: 96 MEADOWSLEA V560 ^{PV}

Birth Date: 04/11/2024 **ID No:** 19134024560

MEADOWSLEA N166 ^{SV}

MEADOWSLEA T365 ^{PV}

MEADOWSLEA L289 ^{SV}

MEADOWSLEA L226 ^{SV}

MEADOWSLEA R725 ^{PV}

MEADOWSLEA H140 ^{SV}

INDEXES

SR

HD

+\$93

+\$96

SEPTEMBER 2025 BREEDPLAN

	CED	DTRS	GL	BW	200	400	600	MCW
EBV	+1	-1.3	-3.4	+4.3	+34	+70	+91	+85
Acc	52%	41%	57%	72%	68%	63%	64%	63%
Milk	SS	DC	CW	EMA	Rib Fat	Rump	RBV %	IMF %
+18	+1.9	-4	+37	+2.4	+3.7	+4.1	-0.4	+1.9
55%	57%	39%	55%	52%	54%	54%	49%	54%

Comments: Moderate birthweight and strong calving ease with ample growth, good muscle, fat and IMF. Nicely balanced, thick, deep bodied bull.

Purchaser:

Price: \$

Lot: 97 MEADOWSLEA V444 ^{PV}

Birth Date: 08/10/2024 **ID No:** 19134024444

MEADOWSLEA M429

MEADOWSLEA R646 ^{PV}

MEADOWSLEA M542

MEADOWSLEA K811

MEADOWSLEA P782 ^{SV}

MEADOWSLEA G920

INDEXES

SR

HD

+\$99

+\$120

SEPTEMBER 2025 BREEDPLAN

	CED	DTRS	GL	BW	200	400	600	MCW
EBV	+8.7	+3.1	-4.8	+0.8	+23	+57	+80	+61
Acc	62%	51%	80%	81%	81%	79%	80%	77%
Milk	SS	DC	CW	EMA	Rib Fat	Rump	RBV %	IMF %
+20	+3	-4	+32	-2	+5.5	+6.8	-0.4	+2
71%	77%	43%	68%	67%	68%	68%	60%	71%

Comments: Here is a very good heifer mating option with super low birthweight, top calving ease and good growth. Very strong rib and rump fats indicate easy doing, and some IMF too. A bull with some scale and outlook about him.

Purchaser:

Price: \$

YEARLING ANGUS BULLS

Lot: 98 MEADOWSLEA V105 ^{PV}

Birth Date: 28/08/2024 **ID No:** 19134024105

ROCKLEY R41 ^{PV}

MEADOWSLEA T185 ^{PV}

MEADOWSLEA R809 ^{PV}

TURIHAUA JUPITER Q353 ^{PV}

MEADOWSLEA T272 ^{PV}

MEADOWSLEA P810 ^{SV}

INDEXES	
SR	HD
+\$181	+\$103

SEPTEMBER 2025 BREEDPLAN								
	CED	DTRS	GL	BW	200	400	600	MCW
EBV	+7.6	+4.7	-6.8	+2	+16	+37	+42	+31
Acc	61%	50%	79%	80%	81%	79%	79%	76%
Milk	SS	DC	CW	EMA	Rib Fat	Rump	RBV %	IMF %
+12	+2.2	-8	+0	+3.1	+6.9	+8.3	+0.2	+0.3
70%	76%	39%	66%	66%	66%	67%	58%	71%

Comments: A nice thick, deep bodied bull here with top heifer mating figures once again. Low birthweight, very good calving ease, and super fertility figures. Great muscle and exceptional fats also contribute to an incredible SRI!

Purchaser:	Price: \$
-------------------	------------------

Lot: 99 MEADOWSLEA V153 ^{PV}

Birth Date: 09/09/2024 **ID No:** 19134024153

TURIHAUA AVENGER N59 ^{SV}

MEADOWSLEA T238 ^{PV}

MEADOWSLEA N177

MEADOWSLEA R890 ^{PV}

MEADOWSLEA T602 ^{PV}

MEADOWSLEA R848 ^{PV}

INDEXES	
SR	HD
+\$159	+\$104

SEPTEMBER 2025 BREEDPLAN								
	CED	DTRS	GL	BW	200	400	600	MCW
EBV	+5.3	+4.7	-2.9	+1.9	+24	+55	+59	+47
Acc	62%	52%	80%	80%	81%	79%	79%	76%
Milk	SS	DC	CW	EMA	Rib Fat	Rump	RBV %	IMF %
+15	+2.1	-6	+9	+4.9	+6.6	+7.3	-0.2	+2.3
70%	76%	41%	67%	66%	67%	67%	58%	71%

Comments: An Avenger grandson and another bull with very similar heifer mating figures - low birthweight, good calving ease, and strong fertility. Scanned with a lot of muscle, very strong in the fat game, and some IMF too - another top index here!

Purchaser:	Price: \$
-------------------	------------------

YEARLING ANGUS BULLS

Lot: 100 MEADOWSLEA V110 ^{PV}

Birth Date: 29/08/2024 **ID No:** 19134024110

ROCKLEY R41 ^{PV}

MEADOWSLEA T185 ^{PV}

MEADOWSLEA R809 ^{PV}

TURIHAUA JUPITER Q353 ^{PV}

MEADOWSLEA T341 ^{SV}

MEADOWSLEA Q505 ^{PV}

INDEXES	
SR	HD
+\$118	+\$88

SEPTEMBER 2025 BREEDPLAN

	CED	DTRS	GL	BW	200	400	600	MCW
EBV	+1.9	+0.7	-6.1	+3.3	+24	+48	+64	+54
Acc	62%	52%	80%	80%	81%	79%	80%	77%
Milk	SS	DC	CW	EMA	Rib Fat	Rump	RBV %	IMF %
+13	+1.7	-5	+15	-0.3	+5.1	+7.2	-0.5	+1.3
71%	77%	41%	67%	66%	67%	68%	59%	72%

Comments: Another great set of heifer mating figures. Low birthweight, good calving ease and fertility with very strong fats. Thick, deep, moderate-framed bull.

Purchaser:

Price: \$

Lot: 101 MEADOWSLEA V188 ^{PV}

Birth Date: 14/09/2024 **ID No:** 19134024188

MEADOWSLEA Q223 ^{PV}

MEADOWSLEA S160 ^{PV}

MEADOWSLEA Q498 ^{PV}

TIMPERLEA QUAIN 763 ^{PV}

MEADOWSLEA T120 ^{PV}

MEADOWSLEA R725 ^{PV}

INDEXES	
SR	HD
+\$128	+\$100

SEPTEMBER 2025 BREEDPLAN

	CED	DTRS	GL	BW	200	400	600	MCW
EBV	+5.2	+0.2	-4.4	+1.3	+24	+54	+63	+52
Acc	63%	52%	80%	81%	81%	79%	80%	77%
Milk	SS	DC	CW	EMA	Rib Fat	Rump	RBV %	IMF %
+20	+1.4	-7	+17	+0.4	+5	+4.9	-0.5	+1.9
71%	76%	41%	67%	66%	67%	68%	59%	71%

Comments: An S160 son with a very strong hindquarter and super figures for heifer mating. Good fertility, very strong fats and IMF. A nice compact bull and a top heifer mating option.

Purchaser:

Price: \$

YEARLING ANGUS BULLS

Lot: 102 MEADOWSLEA V435 ^{PV}

Birth Date: 07/10/2024 **ID No:** 19134024435

TURIHAUA JUPITER Q353 ^{PV}

MEADOWSLEA T276 ^{PV}

MEADOWSLEA Q217 ^{PV}

TURIHAUA CRUMP E5 ^{SV}

MEADOWSLEA J648

MEADOWSLEA B621

INDEXES	
SR	HD
+\$92	+\$64

SEPTEMBER 2025 BREEDPLAN								
	CED	DTRS	GL	BW	200	400	600	MCW
EBV	-6.5	-8.1	+1.1	+5.6	+31	+59	+76	+91
Acc	63%	53%	80%	81%	82%	80%	80%	77%
Milk	SS	DC	CW	EMA	Rib Fat	Rump	RBV %	IMF %
+6	+0.8	-4	+19	+1	-0.9	-1.1	+1.2	+1.5
73%	77%	44%	68%	67%	68%	69%	60%	72%

Comments: Strong solid bull to lead in this pen of deep bodied bulls. Sire T276 was sold to Rocky Point station last year and he is out of a cow by Crump. Strong growth, thick deep and solid with real head and bone - will become a gutsy sire suitable for use over adult cows.

Purchaser:	Price: \$
-------------------	------------------

Lot: 103 MEADOWSLEA V197 ^{PV}

Birth Date: 15/09/2024 **ID No:** 19134024197

MEADOWSLEA Q223 ^{PV}

MEADOWSLEA S160 ^{PV}

MEADOWSLEA Q498 ^{PV}

TURIROA 14830 ^{SV}

MEADOWSLEA T370 ^{PV}

MEADOWSLEA P675 ^{SV}

INDEXES	
SR	HD
+\$126	+\$75

SEPTEMBER 2025 BREEDPLAN								
	CED	DTRS	GL	BW	200	400	600	MCW
EBV	-0.9	+0.8	-2.9	+1.5	+24	+52	+60	+31
Acc	64%	53%	80%	81%	81%	79%	80%	77%
Milk	SS	DC	CW	EMA	Rib Fat	Rump	RBV %	IMF %
+16	+0.1	-6	+8	-2.5	+3.1	+3.7	-0.1	+0.9
71%	77%	43%	68%	67%	68%	69%	60%	72%

Comments: An S160 son out of a cow by Turiroa 14830. Super low birthweight and clean shoulders ideal for heifer mating. Strong fats with some scope and scale about him.

Purchaser:	Price: \$
-------------------	------------------

YEARLING ANGUS BULLS

Lot: 104 MEADOWSLEA V527 PV

Birth Date: 23/10/2024 ID No: 19134024527

MEADOWSLEA M429
MEADOWSLEA R646 PV
MEADOWSLEA M542
MEADOWSLEA K890 DV
MEADOWSLEA N110
MEADOWSLEA H118

INDEXES	
SR	HD
+\$103	+\$95

SEPTEMBER 2025 BREEDPLAN								
	CED	DTRS	GL	BW	200	400	600	MCW
EBV	+1.6	+1.7	-4.6	+4.2	+35	+73	+90	+86
Acc	65%	54%	82%	83%	83%	81%	82%	79%
Milk	SS	DC	CW	EMA	Rib Fat	Rump	RBV %	IMF %
+21	+1.4	-5	+34	-3.8	+5.4	+7.5	-1	+0.5
73%	79%	45%	70%	69%	70%	71%	63%	74%

Comments: An R646 son going back to Crump. Moderate birthweight, plenty of growth and very strong fats. Has some scope about him.

Purchaser:	Price: \$
------------	-----------

Lot: 105 MEADOWSLEA V437 PV

Birth Date: 07/10/2024 ID No: 19134024437

MEADOWSLEA K703 SV
MEADOWSLEA T366 PV
MEADOWSLEA J600 SV
TURIHAUA JUPITER Q353 PV
MEADOWSLEA T478 PV
MEADOWSLEA L351

INDEXES	
SR	HD
+\$140	+\$95

SEPTEMBER 2025 BREEDPLAN								
	CED	DTRS	GL	BW	200	400	600	MCW
EBV	+2.2	-0.3	-2.5	+3.5	+30	+58	+70	+42
Acc	50%	37%	47%	70%	65%	60%	60%	59%
Milk	SS	DC	CW	EMA	Rib Fat	Rump	RBV %	IMF %
+15	+1.1	-5	+29	+2.9	+3.8	+4.9	+0.1	+1.3
47%	53%	34%	51%	46%	49%	49%	45%	48%

Comments: Very well-made bull here with lovely clean shoulders. Ideal heifer mating prospect with low birthweight, good calving ease, strong fertility and massive fats combining for a good index - worth a close look deep in the catalogue.

Purchaser:	Price: \$
------------	-----------

YEARLING ANGUS BULLS

Lot: 106 MEADOWSLEA V491 ^{PV}

Birth Date: 15/10/2024 **ID No:** 19134024491

MEADOWSLEA P593 ^{SV}

MEADOWSLEA T321 ^{PV}

MEADOWSLEA P573 ^{SV}

GOLDWYN 017 ^{SV}

MEADOWSLEA Q305 ^{PV}

MEADOWSLEA M560

INDEXES	
SR	HD
+\$108	+\$71

SEPTEMBER 2025 BREEDPLAN								
	CED	DTRS	GL	BW	200	400	600	MCW
EBV	-4.6	-3.9	-4.8	+4.4	+33	+65	+88	+81
Acc	64%	54%	81%	81%	82%	80%	80%	77%
Milk	SS	DC	CW	EMA	Rib Fat	Rump	RBV %	IMF %
+12	+0.4	-5	+35	-0.1	+3.2	+2.4	+0.1	+0.6
72%	77%	44%	68%	68%	68%	69%	60%	73%

Comments: Grandson of P593, the bull sold to Cricklewood for \$32,000, and out of a cow by Goldwyn. She is a top breeder having produced S132, a top bull transferred to Martin Farming at \$14,000. Moderate birthweight is followed by strong growth with big fats and some real scope and scale.

Purchaser:	Price: \$
-------------------	------------------

Lot: 107 MEADOWSLEA V542 ^{PV}

Birth Date: 30/10/2024 **ID No:** 19134024542

MEADOWSLEA Q223 ^{PV}

MEADOWSLEA S160 ^{PV}

MEADOWSLEA Q498 ^{PV}

MEADOWSLEA N166 ^{SV}

MEADOWSLEA T311 ^{PV}

MEADOWSLEA P566 ^{SV}

INDEXES	
SR	HD
+\$88	+\$75

SEPTEMBER 2025 BREEDPLAN								
	CED	DTRS	GL	BW	200	400	600	MCW
EBV	-5.2	-0.9	-2.1	+3.8	+34	+77	+102	+92
Acc	64%	53%	80%	81%	82%	80%	80%	78%
Milk	SS	DC	CW	EMA	Rib Fat	Rump	RBV %	IMF %
+28	+0.8	-5	+35	-0.8	+4.6	+5	-0.4	+1.7
71%	77%	43%	68%	68%	68%	69%	61%	72%

Comments: An S160 son out of a cow by N166 so plenty of head and bone in the background. Moderate birthweight again with very strong growth, big fats, and scanned with some IMF. A solid type suitable for cows or heifers.

Purchaser:	Price: \$
-------------------	------------------

YEARLING ANGUS BULLS

Lot: 108 MEADOWSLEA V557 PV

Birth Date: 04/11/2024 ID No: 19134024557

RANGATIRA 13-38
MEADOWSLEA R650 PV
MEADOWSLEA H117 SV
TURIHAUA CRUMP E5 SV
MEADOWSLEA M623
MEADOWSLEA J494

INDEXES	
SR	HD
+\$69	+\$63

SEPTEMBER 2025 BREEDPLAN								
	CED	DTRS	GL	BW	200	400	600	MCW
EBV	-6.1	-7.5	-1.9	+5.7	+28	+62	+84	+62
Acc	63%	54%	80%	81%	82%	80%	80%	77%
Milk	SS	DC	CW	EMA	Rib Fat	Rump	RBV %	IMF %
+16	+1.2	-3	+34	+0.4	+3	+3.7	-0.2	+1.6
72%	77%	47%	68%	68%	68%	69%	62%	72%

Comments: A son of R650, going back to the \$100,000 Rangatira, and out of a Crump daughter. Strong boned and clean shouldered with good fat covers. A handy sound type.

Purchaser:	Price: \$
------------	-----------

Lot: 109 MEADOWSLEA V562 PV

Birth Date: 08/11/2024 ID No: 19134024562

MEADOWSLEA M564 SV
MEADOWSLEA QUARTZ Q250 PV
MEADOWSLEA K710 SV
MEADOWSLEA N257 SV
MEADOWSLEA Q299 PV
MEADOWSLEA N266

INDEXES	
SR	HD
+\$120	+\$95

SEPTEMBER 2025 BREEDPLAN								
	CED	DTRS	GL	BW	200	400	600	MCW
EBV	+0.8	+2.8	-3.1	+2.2	+30	+65	+86	+68
Acc	57%	45%	66%	75%	70%	68%	68%	68%
Milk	SS	DC	CW	EMA	Rib Fat	Rump	RBV %	IMF %
+19	+2.9	-5	+29	+4.5	+3.4	+2.9	+0.4	+1.2
59%	63%	40%	59%	58%	61%	61%	55%	61%

Comments: Another of these consistent Q250's that are so good for heifer mating. Low birthweight, good calving ease, strong fertility with fat, muscle, and IMF.

Purchaser:	Price: \$
------------	-----------

YEARLING ANGUS BULLS

Lot: 110 MEADOWSLEA V220 ^{PV}

Birth Date: 17/09/2024 **ID No:** 19134024220

SUDELEY VIKING 18101 ^{SV}

SUDELEY BJORN S80 ^{SV}

SUDELEY 1141

MEADOWSLEA R623 ^{PV}

MEADOWSLEA T108 ^{PV}

MEADOWSLEA R579 ^{PV}

INDEXES

SR

HD

+\$96

+\$91

SEPTEMBER 2025 BREEDPLAN

	CED	DTRS	GL	BW	200	400	600	MCW
EBV	+0	+1.4	-1.7	+4.8	+34	+65	+87	+75
Acc	52%	41%	61%	73%	68%	64%	64%	64%
Milk	SS	DC	CW	EMA	Rib Fat	Rump	RBV %	IMF %
+14	+2.7	-4	+34	+1.2	+2.6	+2.5	-0.2	+2.3
54%	58%	34%	55%	53%	56%	56%	50%	57%

Comments: A Sudeley Bjorn son with moderate birthweight. Good, upstanding, clean shouldered bull suitable for heifers or cows.

Purchaser:

Price: \$

Lot: 111 MEADOWSLEA V443 ^{PV}

Birth Date: 08/10/2024 **ID No:** 19134024443

TURIROA PANTHER 18P241 ^{PV}

MEADOWSLEA T271 ^{PV}

MEADOWSLEA Q213 ^{PV}

MEADOWSLEA M452

MEADOWSLEA Q182 ^{PV}

MEADOWSLEA M1087

INDEXES

SR

HD

+\$114

+\$102

SEPTEMBER 2025 BREEDPLAN

	CED	DTRS	GL	BW	200	400	600	MCW
EBV	+3.3	+4.2	-4.3	+3.5	+28	+67	+85	+79
Acc	51%	41%	55%	72%	67%	63%	63%	62%
Milk	SS	DC	CW	EMA	Rib Fat	Rump	RBV %	IMF %
+12	+0.8	-4	+30	+0.2	+1.3	+1.6	+0.5	+0.2
53%	54%	36%	54%	51%	54%	53%	49%	53%

Comments: Lovely low birthweight bull with good calving ease and strong growth. A nice well balanced, clean shouldered type of bull with a deep body.

Purchaser:

Price: \$

YEARLING ANGUS BULLS

Lot: 112 MEADOWSLEA V402 PV

Birth Date: 05/10/2024 ID No: 19134024402

TURIHAUA TORNADO Q336 PV
MEADOWSLEA T382 PV
MEADOWSLEA Q152 PV
MEADOWSLEA P616 SV
MEADOWSLEA R554 PV
MEADOWSLEA P695 SV

INDEXES	
SR	HD
+\$163	+\$95

SEPTEMBER 2025 BREEDPLAN								
	CED	DTRS	GL	BW	200	400	600	MCW
EBV	+2.1	-1.1	-4.2	+3.5	+30	+62	+73	+40
Acc	62%	51%	79%	80%	81%	79%	80%	77%
Milk	SS	DC	CW	EMA	Rib Fat	Rump	RBV %	IMF %
+17	+3.5	-7	+28	+6.3	+2.7	+3.7	+0.5	-0.2
70%	75%	42%	67%	66%	67%	68%	59%	71%

Comments: A nice low birthweight bull with good calving ease and very strong fertility. Lots of muscle and fat all contribute to a top index! Terrific spread of data across the page.

Purchaser:	Price: \$
------------	-----------

Lot: 113 MEADOWSLEA V494 PV

Birth Date: 16/10/2024 ID No: 19134024494

TURIHAUA JUPITER Q353 PV
MEADOWSLEA T600 PV
MEADOWSLEA N238
MEADOWSLEA P565 SV
MEADOWSLEA S122 PV
MEADOWSLEA Q513 PV

INDEXES	
SR	HD
+\$103	+\$95

SEPTEMBER 2025 BREEDPLAN								
	CED	DTRS	GL	BW	200	400	600	MCW
EBV	+3.5	+3.6	-5.5	+4.2	+30	+56	+68	+60
Acc	62%	52%	80%	80%	81%	79%	79%	76%
Milk	SS	DC	CW	EMA	Rib Fat	Rump	RBV %	IMF %
+15	+0.3	-5	+28	-2.3	+0.8	+0	+0.2	+1.1
71%	76%	41%	67%	66%	67%	67%	58%	71%

Comments: A grandson of Jupiter, out of a cow going back to Lazarus. Moderate birthweight with calving ease. A clean-cut type ideal for heifers.

Purchaser:	Price: \$
------------	-----------

2 YEAR OLDS

TAG	LOT	TAG	LOT
U117.....	27	U477.....	24
U119.....	4	U488.....	6
U133.....	9	U499.....	19
U175.....	12	U516.....	16
U180.....	31	U518.....	18
U185.....	10	U522.....	5
U245.....	22	U549.....	23
U275.....	1	U567.....	17
U276.....	21	U594.....	30
U336.....	2	U597.....	3
U396.....	14	U598.....	15
U402.....	33	U599.....	20
U413.....	28	U602.....	13
U426.....	32	U606.....	26
U434.....	7	U610.....	29
U439.....	8	U614.....	11
U464.....	25		

YEARLINGS

TAG	LOT	TAG	LOT
V104	91	V334	69
V105	98	V336	70
V110	100	V342	82
V121	49	V348	42
V122	61	V349	34
V123	41	V357	36
V130	72	V359	66
V147	95	V360	78
V153	99	V367	52
V158	44	V376	86
V160	46	V386	81
V169	92	V402	112
V174	74	V404	58
V175	39	V405	60
V182	76	V406	84
V185	71	V407	67
V188	101	V423	87
V197	103	V430	65
V204	54	V434	90
V205	45	V435	102
V215	62	V437	105
V218	48	V443	111
V219	53	V444	97
V220	110	V464	79
V237	43	V465	80
V240	59	V470	93
V245	55	V472	77
V254	88	V489	47
V259	57	V491	106
V265	37	V494	113
V266	38	V520	73
V268	50	V527	104
V270	68	V542	107
V274	51	V545	85
V279	40	V548	75
V289	35	V553	83
V292	63	V557	108
V313	64	V559	89
V326	56	V560	96
V328	94	V562	109

BETTER BALANCED BEEF

BRED FOR BALANCE

Strong maternal influence combined with quality carcase attributes & superior genetic traits.

FARMED FOR BALANCE

All round performer – from hill country through to intensive finishing systems.

RECORDED FOR BALANCE

Performance Recorded specific to NZ farming conditions & commercial market focused selection indexes available through nProve.

CONSUMED FOR BALANCE

Exceeds consumer demands.

NOTES

FMG Premier Bull Sale Insurance Form



What is FMG Premier Bull Insurance?

On receiving a completed FMG Premier Bull Sale Insurance form, FMG provides its existing FMG clients with an active policy 14 days free insurance for bulls purchased up to \$50,000. For bulls purchased over \$50,000, please contact an FMG representative.

What is the length of cover?

Your specified bull(s) will be insured for 14 days once you have fully completed this form and it's received by an FMG representative. If you would like a longer period of cover, simply tick the Cover extension box below to extend your Premier Bull Insurance to 12 months. The specified bull(s) is then insured for the next 12 months at **7.6%** of the purchase price. FMG will invoice you for this additional cover.

What are the benefits?

✓ <i>Infertility</i>	Cover if your specified bull has to be euthanised due to permanent infertility caused by certain accidents, disease, injury, or illness.
✓ <i>Theft or death</i>	Cover for your specified bull for theft or death caused by certain accidents, disease, injury, or illness (including while in transit anywhere in New Zealand).
✓ <i>Vet costs</i>	Cover up to \$500 for treatment of your specified bull to prevent death.

What will FMG pay?

FMG will pay the fair market value of your specified bull, less any amount you receive for the sale of the carcass, up to the amount shown on the insurance certificate.



Call us on
0800 366 466



Visit our website
fmg.co.nz

FMG Premier Bull Sale Insurance Form



Apply

Please fill in this form as soon as you have purchased your new bull(s) and hand it to your FMG representative.
This form **MUST** be fully completed and you have to be an existing FMG client with an active policy to be eligible for the 14 days free Premier Bull Sale Insurance.

Purchaser full name:			FMG Account Number:	
Purchaser's address:				
Purchaser's phone:			Purchaser's email:	
Agent arranging insurance on behalf of the purchaser? Provide your full name:				
Lot:	Tag:	\$	Breed:	DOB:

FMG Premier Bull Sale Insurance Form



Cover extension

☐

Tick here to extend your Bull Insurance to 12 months @ 7.6% of the purchase price of your bull. This will extend the cover beyond the initial 14 days free cover for the remaining period of 12 months.

NO VERBAL INSTRUCTIONS WILL BE ACCEPTED	Signature of Purchaser or Agent:	Date: / /
<p>Disclaimer Please note this is only a summary of the product and is subject to our specific product documentation. For full details, you should refer to the policy document. You can get these documents, and any other information you need, from your FMG representative, by calling us or visiting, fmg.co.nz/livestockpolicy</p> <p>Privacy FMG is collecting your personal information in order to provide you with the insurance you are requesting. The information is collected and held by FMG, at 292 Church St, Palmerston North. Contact us if you have any questions or concerns, want access to the information we have about you, or you need us to update your information.</p>		



Call us on
08 00 366 466



Visit our website
fmg.co.nz

MEADOWSLEA SPRING ANGUS BULL SALE

PURCHASER'S INSTRUCTION SLIP

(To be handed into the Auctioneers before leaving sale)

Name:.....

Address:

.....

Telephone:..... NAIT no.#

Email:

Purchases:

Lot No:..... \$..... Lot No..... \$.....

Lot No:..... \$..... Lot No..... \$.....

Lot No:..... \$..... Lot No..... \$.....

Lot No:..... \$..... Lot No..... \$.....

Lot No:..... \$..... Lot No..... \$.....

Lot No:..... \$..... Lot No..... \$.....

Lot No:..... \$..... Lot No..... \$.....

Lot No:..... \$..... Lot No..... \$.....

Lot No:..... \$..... Lot No..... \$.....

Lot No:..... \$..... Lot No..... \$.....

Transport Company.....

Account to:

FMG Insurance Cover

- ☒ 14 days - FMG Premium Bull cover (at no charge)
- ☐ Extend cover to 12 months - FMG Premium Bull cover

Please select your preferred payment method:

- ☐ FMG direct
- ☐ Farmlands
- ☐ Ruralco

Deliver to:.....

Signature of Purchaser:

Date:.....

NO VERBAL INSTRUCTIONS CAN BE ACCEPTED

Meadowslea Quartz Q250

10 sons on offer

Low birthweight Sire featuring outstanding NZ bloodlines

NZ Sire legends – Hingaia 469 (features 3 times),
Waimata Zulu 689, Turihaua Crumble, Turihaua Crump,
Meadowslea F540.

NZ Record price 10yr old Cow - Meadowslea G1000 - is
the paternal Grandam of Quartz



SEPTEMBER 2025 BREEDPLAN

CED	DTRS	GL	BW	200	400	600	MCW	Milk
-1.3	+4.8	-3.4	+1.5	+30	+62	+84	+52	+23
77%	60%	93%	95%	92%	91%	91%	88%	79%

SS	DC	CW	EMA	Rib Fat	Rump	RBY %	IMF %
+3.8	-5	+26	+5.9	+5.4	+4.9	-0.2	+2.1
80%	77%	79%	79%	73%	79%	76%	82%

■ Top 25% ■ Top 50%

Kincardine Rainstorme R25

Purchased 2022 \$81,000

**NZ Breed trait leader for Calving
Ease, Scrotal size and Milk**
(300 progeny recorded in NZ and AUS)



SEMEN AVAILABLE

SEPTEMBER 2025 BREEDPLAN								
CED	DTRS	GL	BW	200	400	600	MCW	Milk
+9.8	+7.1	-7	+2.4	+47	+86	+95	+34	+32
77%	60%	96%	97%	96%	95%	94%	88%	80%

SS	DC	CW	EMA	Rib Fat	Rump	RBV %	IMF %
+4.5	-3	+54	+8.9	+1	+1.1	+0.9	-0.2
93%	50%	81%	82%	82%	82%	76%	82%

■ Top 25% ■ Top 50%