

# MEADOWSLEA ANGUS SPRING BULL SALE



MEADOWSLEA  
ANGUS & SHEEP GENETICS



**35 2-year bulls**  
**63 yearling bulls**

**On-Farm Helmsman Auction**  
**Friday 8th October 2021, 1pm**  
*and*

**Online at**

**[www.meadowslea.co.nz](http://www.meadowslea.co.nz)**

**from Sunday October 3rd**



# The Meadowslea hill-country type

Visual appraisal is still very important for selecting cattle to perform in hill - country

**MASCULINE TRAITS - A strong head and jaw and thick neck indicate high levels of libido, testosterone and reproduction efficiency**

**NECK LENGTH - A thicker necked animal matures and reaches puberty earlier and has more libido**

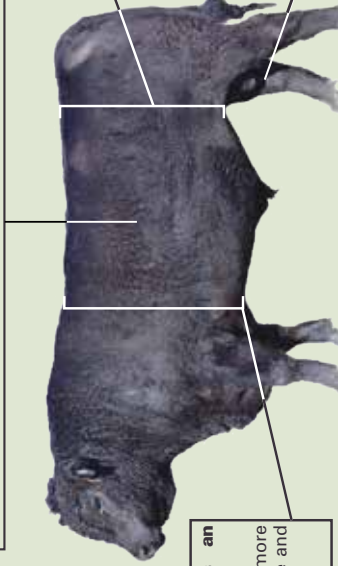
A longer neck indicates a higher maintenance animal that is slower to reach puberty and re-breed

**HEART GIRTH - Large heart girth is an indicator of vigor and easy keeping ability**

Small heart girth animals are more susceptible to stress, are higher maintenance and do not perform well on tussock

**RIB FAT - Strong rib fat covers are the essential energy store for adverse conditions.**

They indicate easy-doing and finishing ability and are directly related to increased fertility in both heifers and cows.



**STRUCTURAL SOUNDNESS, FEET AND BONE - High country cattle cover large distances over rugged terrain so a strong skeleton is essential**

**HIDE - a good thick skin and coat is essential in the cold harsh environment**

**FLANK - Deep flanked animals are easier keeping, have more meat in the rump and have more maternal and reproductive efficiency**

Higher flanked animals tend to be flighty, are higher maintenance and take longer to finish on grass

**SCROTAL SIZE - Larger scrotal size at 12 months indicates daughters will reach puberty earlier, be more fertile, and re-breed early every year.**

# FRIDAY 8th OCTOBER

## 2021, 1pm,

### Mt Cook Road, Fairlie

#### **VENDOR:**

##### **Mr David S Giddings**

Phone: 03 685 8027  
Mobile: 027 2299 760  
Email: giddingsfamily@xtra.co.nz

#### **PARTICIPATING COMPANIES:**

##### **PGG Wrightson**

John McCone	027 229 9375
Simon Eddington	027 590 8612
Callum McDonald	027 433 6443
Joe Higgins	027 431 4041
Greg Uren	027 431 4051
Sam Bell	027 204 0499
Bruce Dunbar	027 595 6473
Barry Fox (Dairy)	027 439 3317

##### **Carrfields Livestock:**

Callum Dunnett	027 587 0131
Andrew Holt	027 496 3311
Paul Roulston	027 616 4241

##### **Hazlett Rural:**

Madison Taylor	021 656 851
Hamish Zuppich	027 403 3025
Snow Buckley	027 561 4652
Don Borlase (Dairy)	027 561 4025
Dean Cox (Dairy)	027 561 5007
Greg Shearer (Fairlie)	027 476 6769
George Mannering	027 462 0182
Guy Martin	027 538 3741
Tom Gatrell	027 462 0028

##### **Rural Livestock:**

Anthony Cox	Stud Stock	0272 083 071
Simon Cox	Livestock Manager	0272 097 665
Quinten Botha	South Canterbury	0274 730 885
Fraser Adams	South Canterbury	0274 730 823
Mick Withers (Dairy)	Canterbury	0274 730 817
Richard Leech (Dairy)	Canterbury	0276 918 442

##### **NZ Farmers Livestock**

Regan Laughton	027 440 6722
Liam McKenzie	027 520 1771

**TB Status – C10**

#### **ATTENTION ALL BUYERS:**

Can you please ensure you bring your NAIT Number to the sale.



# MEADOWSLEA SPRING BULL SALE



**Friday 8th October 2021 1pm**

**Online and On-Farm,  
State Highway 8, 5km west of Fairlie  
Online Bidding opens with  
Video Release Sunday 3rd Oct, 7pm**

## **Sale Format**

The sale will be conducted as a Helmsman-style auction, meaning that all lots are for sale simultaneously. This is to allow for the participation of those in attendance, as well as those online. The sale will be hosted on our own yourbid platform and accessed through our website [www.meadowslea.co.nz](http://www.meadowslea.co.nz). Prior to the sale, all lots will be filmed and available for viewing up until sale day on the Meadowslea website.

**Bulls are available for viewing in the paddock anytime** – just call 027 2299760 to arrange a time.

**Registration for those in attendance** will be at the on-farm office, where a copy of the conditions of sale will be posted.

**Registration for those online** will be through the Meadowslea website, where the conditions of sale will also be available.

**Buyers** will receive a buyer number as they register which will accompany each bid. Buyers registering online will receive a buyer number when they register for the sale which will automatically accompany each bid they place, whether they do so at home on their computer, or through their smart phone while in attendance. Those in attendance may also bid by writing on the supplied bidding cards and handing them in to the on-farm office staff. All live bids and all lots will be visible at all times, both online and on a big screen on-farm.

**Online registration is available now** and we encourage everyone to visit our website [www.meadowslea.co.nz](http://www.meadowslea.co.nz), to register, and then place practice bids on the demonstration lots on the auction page.

**Online videos of each lot** with accompanying commentary will be released both on our website and on facebook on Sunday Oct 3rd at 7pm. This video will include footage of every bull in the catalogue with comments and background information from the Meadowslea team and will be available for viewing right up until the conclusion of the sale.

**Online bidding** will be open from 7pm on Sunday Oct 3rd until the conclusion of the sale.

**On Oct 8th**, Sale Day, the on-farm registration and bidding will open at 11am. **Livestreaming with interactive viewing will commence at 12.30 pm** with a walk through of all the pens, with commentary from the vendors and genetic specialists. Requests to review particular bulls can be made through the web-site chat box or by telephone or text to the vendors or stock agents in attendance. This will continue throughout until the conclusion of the sale.

**A live screen on the website** will show all lots alongside their current prices and the buyer number of the bidder who holds that lot. On-farm attendees will be able to view on a big screen on site. Bids will be displayed on a computer or smart phone screen in the following colours

Example:

**\$2500** Displayed in **Red** denotes the Vendors reserve and indicates there has been no bid

**\$3000** Displayed in **Blue** means an active bid has been received

**\$3500** A new Bid has been Received within the last 2 minutes on this lot

**\$3500** The holder of the leading bid will have the lot number highlighted in Green on their computer or their smart phone when logged in.

**The sale will run until 2pm on Oct 8th.** After this time the sale will conclude once there has been a period of at least 2 minutes without any bid being received on any lot. If another bid is placed on any lot during the 2-minute period, then time is extended and bids can be received on all lots for a further 2 minutes. This process will be repeated until a clear 2 minutes passes without any bids on any lot at which time the sale will conclude.

**Final Time** will be called clearly by the commentary team who will use their discretion to ensure all bidders are satisfied.

All updates will be posted on our website, as will an up-to-date version of this document.

**Rebate Purchasing Commission.** There will be no booking company in attendance and all buying companies will be responsible for booking of their own clients' purchases. Participating companies will be paid a purchasers' rebate commission as follows:

- 1 9% rebate commission paid to the nominated buying company, provided the vendor is advised of the purchase's intention to buy prior to the commencement of the on-farm sale, or before the purchaser commences bidding online.
- 2 3% rebate commission paid to the nominated buying company when the vendor has **NOT** been advised of the purchaser's intention to buy prior to the commencement of the on-farm sale, or before the purchaser commences bidding online.

# FOREWORD

---

Meadowslea Angus Stud was established in 1985 with the purchase of capital stock females from Turihaua Station, Gisborne.

The herd today comprises 450 cows run on tussock country west of Fairlie at an altitude of 1500 to 2500 feet. The cows are run entirely under commercial conditions with all heifers calving as 2-year-olds or they are culled. Strong emphasis is placed on cow fertility and ease of calving with any dry cows culled.

Selection criteria is for easy-fleshing, moderate-framed cattle with plenty of meat and adequate fat cover, that will shift and perform in the South Island hill country. Sires used are all NZ-bred, with real emphasis placed on structural soundness, longevity, and fat cover. Over the last 12 years our stud cows have grazed next door on “Berkley Downs” native tussock blocks, and this has further tested their hardiness and constitution.

Sale bulls have spent 120 days on winter feed. The yearlings have been on fodderbeet where they have gained over 1 kg / day while the 2-year bulls cruised through the winter on kale. Both mobs were shifted onto grass in the second week of September.

In 2019 we had 190 stud heifers born and after losing 2 over the winter we mated all 188 on hand. For the second year in a row we had the same outstanding conception rate with only 3 empties. We believe it is the strong focus that we place on the maternal and fertility traits that is driving these outstanding results. Furthermore, the performance of our young R2-year heifers is leading the progress within the herd, and you will note that many of the bulls on offer are bred from these outstanding young cattle – either out of the 2-year heifers or bred by yearling bulls.

Strong maternal and fertility traits are the main driver of profitability in any beef herd, and they continue to be the major selection criteria in our breeding programme.

We always keep a selection of very good 2-year-old Angus bulls for this spring sale and this year is no exception, with some particularly meaty, easy-doing bulls on offer, many suited to heifer mating.

The yearlings include some top picks which will develop in to very good herd sires and there is a very good selection of low birth weight bulls suitable for heifer mating.

Meadowslea is a closed herd. All appropriate steps are being taken to ensure biosecurity is maintained at all times for ourselves and our clients.

All bulls tested clear and vaccinated for BVD. Scrotal contents and prepuce palpated with no abnormalities found.

We wish you well with your purchases and as always stand behind them 100%.

*David Giddings*

## **The Meadowslea Double - Diamond Brand of Quality**

The Meadowslea Double Diamond brand is displayed on the 2yr bulls that are covered by our 3 year comprehensive guarantee and recommended for beef breeding herds.



These bulls have been structurally assessed by Bill Austin and the results are displayed on our Website.

## 2021 TRANSTASMAN ANGUS CATTLE EVALUATION AVERAGE EBVS

CED	DTRS	GL	BW	200	400	600	MCW	Milk
<b>+1.5</b>	<b>+1.2</b>	<b>-4.1</b>	<b>+4.1</b>	<b>+41</b>	<b>+76</b>	<b>+98</b>	<b>+88</b>	<b>+14</b>

SS	DC	CW	EMA	Rib Fat	Rump	RBY (%)	IMF%
<b>+1.7</b>	<b>-3.7</b>	<b>+49</b>	<b>+4.1</b>	<b>+0.5</b>	<b>+0.4</b>	<b>+0.2</b>	<b>+1.0</b>

INDEXES	
SR	HD
<b>+\$105</b>	<b>+\$99</b>

# Downlands Deer & **STUDSTOCK**

**DEDICATED TO WORKING AS A TEAM**



**CONTACT: KRIS ORANGE**  
**TELEPHONE 03 693 8013**  
**MOBILE 021 322 622**

*NZ Stud Stock Specialists*



# 2021 TRANSTASMAN ANGUS CATTLE EVALUATION PERCENTILE BAND FOR ALL 2019 - BORN ANIMALS

Calv-Ease			Birth				Growth				Fertility				Carcase				Index		
Dir	Dtrs	GL	Bwt	200	400	600	Mwt	Milk	SS	DC	Cwt	EMA	Rib	P8	RBV	IMF	SRI	API	HDT		
% days			kg			kg			cm		days		kg		sq.cm		mm		%		\$
Top 1%	+10.8	+9.0	-9.6	-0.2	+59	+105	+139	+135	+25	+4.0	-8.7	+79	+11.3	+3.6	+3.8	+2.4	+3.7	+169	+213	+143	
Top 5%	+8.8	+7.3	-7.6	+1.2	+54	+96	+126	+120	+22	+3.2	-7.1	+70	+8.7	+2.5	+2.7	+1.7	+2.8	+147	+181	+133	
Top 10%	+7.6	+6.2	-6.7	+1.8	+51	+91	+120	+112	+20	+2.8	-6.2	+66	+7.4	+2.0	+2.1	+1.4	+2.4	+137	+166	+127	
Top 20%	+5.8	+4.7	-5.6	+2.7	+47	+86	+112	+104	+18	+2.4	-5.3	+60	+6.0	+1.5	+1.5	+1.0	+1.9	+126	+146	+119	
Top 30%	+4.5	+3.5	-5.0	+3.2	+45	+82	+107	+98	+17	+2.2	-4.6	+56	+5.2	+1.1	+1.1	+0.7	+1.5	+118	+132	+112	
Top 40%	+3.2	+2.5	-4.4	+3.7	+43	+79	+103	+93	+16	+1.9	-4.1	+53	+4.5	+0.8	+0.7	+0.5	+1.2	+111	+119	+106	
<b>Top 50%</b>	<b>+1.9</b>	<b>+1.5</b>	<b>-4.0</b>	<b>+4.2</b>	<b>+41</b>	<b>+76</b>	<b>+99</b>	<b>+88</b>	<b>+14</b>	<b>+1.7</b>	<b>-3.6</b>	<b>+49</b>	<b>+3.9</b>	<b>+0.5</b>	<b>+0.4</b>	<b>+0.2</b>	<b>+0.9</b>	<b>+105</b>	<b>+106</b>	<b>+101</b>	
Top 60%	+0.6	+0.4	-3.6	+4.6	+39	+73	+94	+83	+13	+1.5	-3.2	+46	+3.3	+0.2	+0.1	+0.0	+0.7	+99	+92	+95	
Top 70%	-0.8	-0.8	-3.1	+5.0	+37	+70	+90	+78	+12	+1.3	-2.7	+42	+2.7	-0.1	-0.3	-0.2	+0.4	+92	+78	+88	
Top 80%	-2.5	-2.2	-2.5	+5.6	+34	+66	+85	+71	+11	+1.0	-2.1	+38	+2.0	-0.5	-0.7	-0.5	+0.1	+83	+62	+81	
Top 90%	-5.0	-4.1	-1.6	+6.3	+31	+61	+77	+62	+9	+0.6	-1.2	+33	+1.1	-1.0	-1.4	-0.9	-0.2	+72	+43	+70	
Top 95%	-7.2	-5.7	-0.9	+6.9	+28	+56	+70	+55	+7	+0.2	-0.5	+29	+0.3	-1.4	-1.9	-1.3	-0.4	+63	+29	+61	
Top 99%	-12.1	-8.8	+0.9	+8.0	+21	+46	+59	+41	+5	-0.8	+1.5	+18	-1.4	-2.3	-3.0	-2.1	-0.9	+40	+7	+40	

▲ Negative (lower) values more favourable

▲ Negative (lower) values more favourable

Based on the results of the September 2021 TACE analysis



14th September 2021

On the 14th September 2021

I palpated the scrotal contents and prepuce of the bulls.

There were no abnormalities found.

The scrotal circumferences were measured and recorded.

Glenda Kellahan (B.V.Sc.)

**Accounts Office**

Ph: 03 687 9381

Fax: 03 687 9380

Email: [office@orangivet.co.nz](mailto:office@orangivet.co.nz)

PO Box 4013,

Highfield, Timaru

**Geraldine**

**Veterinary Centre**

T.M. colson B.V.Sc.

M.G. Catherwood B.V.Sc.

G.K. Kellahan B.V.Sc.

A.D. McCullough B.V.Sc

27 Wilson Street, Geraldine

Ph: 03 693 1163

Fax: 03 693 1161

**Fairlie**

**Veterinary Centre**

Allandale Road, Fairlie

PO Box 26, Fairlie

Ph: 03 685 8407

Fax: 03 685 8904

**Highfield**

**Veterinary Centre**

B.M. Gregor B.V.Sc.

G.A. Gregor V.S.

S.R. Newmarch B.Sc, B.V.Sc.

265 Otipua Road, Timaru

PO Box 4013, Highfield

Timaru

Ph: 03 684 5646

Fax: 03 688 4397

## Aorangi Vets - Fairlie

*"Your Animals Our Expertise"*

Your first choice of vets in the Mackenzie District for all  
your animal health requirements.

**Phone 03 685-8407**

# 2 YEAR OLD ANGUS BULLS

## Lot: 1 MEADOWSLEA Q479

Birth Date: 06/11/19 ID No: 19134019479

MEADOWSLEA MEAT MACHINE G914



MEADOWSLEA K703

MEADOWSLEA H126

GOLDWYN 017

MEADOWSLEA M451

MEADOWSLEA G841

INDEXES	
SR	HD
+\$134	+\$91

### 2021 TRANSTASMAN ANGUS CATTLE EVALUATION EBVS

CED	DTRS	GL	BW	200	400	600	MCW	Milk
+1.8	-0.8	-4.9	+3.7	+34	+67	+88	+67	+16
52%	39%	45%	74%	69%	69%	72%	67%	55%

SS	DC	CW	EMA	Rib Fat	Rump	RBV %	IMF %
+3.3	-8.3	+30	+3.9	+3.8	+4.6	-0.7	+0.0
68%	44%	58%	57%	58%	59%	54%	53%

**Comments:** We start the 2-year line-up with a pen of three K703 sons that show all the depth, thickness, and easy-doing attributes this blood line is known for. We selected Q479 to use as a yearling over stud heifers and it is easy to see why. This pedigree cross with Goldwyn 17 has proven to be very successful at Meadowslea and brings industry-leading fertility traits, with scrotal size, short days to calving, rib fat, and rump fat all in the top 2% for the breed. A lovely top-line, great head, depth, and thickness with a powerful hindquarter and a good structural assessment. He is a great cow or heifer mating option with a self-replacing index in the top 10% for the breed.

Purchaser:

Price: \$

## Lot: 2 MEADOWSLEA Q419

Birth Date: 17/10/19 ID No: 19134019419

MEADOWSLEA MEAT MACHINE G914



MEADOWSLEA K703

MEADOWSLEA H126

GOLDWYN 017

MEADOWSLEA K979

MEADOWSLEA G1079

INDEXES	
SR	HD
+\$110	+\$91

### 2021 TRANSTASMAN ANGUS CATTLE EVALUATION EBVS

CED	DTRS	GL	BW	200	400	600	MCW	Milk
+1.8	-1.0	-4.9	+4.1	+34	+65	+88	+61	+14
52%	39%	44%	74%	69%	70%	72%	67%	56%

SS	DC	CW	EMA	Rib Fat	Rump	RBV %	IMF %
+2.3	-5.1	+29	+2.9	+3.0	+3.8	-1.2	+0.9
72%	45%	59%	59%	60%	61%	55%	54%

**Comments:** Q419 is almost identically bred to lot 1 and they were used alongside each other to mate yearling stud heifers. He is another very similar sound type with an excellent structural assessment. He displays exceptional depth of flank, which is always a great indicator of easy doing ability. This is certainly borne out with his rib and rump fats which rank in the top 2% of the breed. Q419 has strong fertility traits with moderate birthweight and good calving ease suitable for heifer mating. He has a very strong hindquarter and terrific outlook and balance with a very good top-line.

Purchaser:

Price: \$

# Secure your bull team with no upfront cost

Apply for a Defer-A-Bull purchase agreement today – a simple, cost effective solution when sourcing your dairy service bulls. Secure your bull team early with no repayments until bulls are sold.

- No upfront cost
- No repayments until bulls are sold
- Secure as many bulls as you need
- Get expert advice and support from your local dairy specialist
- Backed by our nationwide team of specialist dairy representatives.



Find out more >>



**SCAN  
ME**

[pggwrightson.co.nz/deferabull](http://pggwrightson.co.nz/deferabull)

## Contact your local representative.

### Simon Eddington

Genetics Representative  
Ashburton  
0275 908 612

### John McKone

Auctioneer  
Amberley  
0272 299 375

### Joe Higgins

Livestock Manager  
Timaru  
0274 314 041

### Greg Uren

Livestock Representative  
Temuka  
0274 314 051

### Bruce Dunbar

Livestock Representative  
Fairlie  
0275956473

### Matt Gibbs

Livestock Representative  
Fairlie  
0275 552 307

### Sam Bell

Livestock Representative  
Fairlie  
0272 040 499

### Barry Fox

Livestock Representative  
Oamaru  
0274 393 317

### Andy Cunningham

Livestock Representative  
Geraldine  
0275 668 243

### Neil Carter

Livestock Representative  
Waimate  
0272 821 104

### Victor Schikker

Livestock Representative  
Ashburton  
0275 908 061

### James Hamilton

Livestock Representative  
Ashburton  
0274 770 551

### Callum McDonald

Livestock Representative  
Invercargill  
0274 336 443

**PGG Wrightson**

**BrokerWeb**  
RISK SERVICES  
*Your Insurance Partner*

**Bull insurance?  
Yes, we can help.**

[pggwrightson.co.nz/insurance](http://pggwrightson.co.nz/insurance)

See your local BrokerWeb Risk Services (BWRS) rep at the sale. Or contact your PGG Wrightson Livestock rep. Bulls cover available at the fall of the hammer, and billed direct to your PGG Wrightson Livestock account.

Refer disclosure on our website.

# 2 YEAR OLD ANGUS BULLS

## Lot: 3 MEADOWSLEA Q149

Birth Date: 17/09/19 ID No: 19134019149

MEADOWSLEA MEAT MACHINE G914



MEADOWSLEA K703

MEADOWSLEA H126

MEADOWSLEA F540

MEADOWSLEA L169

MEADOWSLEA F596

INDEXES	
SR	HD
+\$117	+\$100

### 2021 TRANSTASMAN ANGUS CATTLE EVALUATION EBVS

CED	DTRS	GL	BW	200	400	600	MCW	Milk
+4.8	+0.9	-5.4	+3.2	+31	+62	+77	+79	+14
52%	39%	48%	74%	69%	70%	73%	68%	56%

SS	DC	CW	EMA	Rib Fat	Rump	RBV %	IMF %
+1.9	-7.2	+31	+5.8	+1.8	+2.1	+0.0	-0.1
73%	45%	59%	60%	60%	61%	56%	54%

**Comments:** Another bull cast from the exact same mould, this time out of a cow by F540 so we have a double-up of strong maternal and fertility traits. Q419 has very good calving ease, short gestation, and low birthweight making him an ideal choice for heifer mating. He scanned with the second best EMA of the group and this shows in his depth of muscle and strong hindquarter. Another very good pick with a strong pedigree.

Purchaser:

Price: \$

## Lot: 4 MEADOWSLEA Q279

Birth Date: 21/09/19 ID No: 19134019279

MEADOWSLEA L226



MEADOWSLEA N415

MEADOWSLEA K023

RATANUI LAD 21

MEADOWSLEA N441

MEADOWSLEA J478

INDEXES	
SR	HD
+\$104	+\$91

### 2021 TRANSTASMAN ANGUS CATTLE EVALUATION EBVS

CED	DTRS	GL	BW	200	400	600	MCW	Milk
+0.0	-4.4	-5.0	+5.3	+40	+76	+109	+108	+14
47%	33%	38%	71%	65%	66%	70%	64%	45%

SS	DC	CW	EMA	Rib Fat	Rump	RBV %	IMF %
+2.2	-7.8	+37	-0.9	+2.3	+3.5	-1.6	+1.0
70%	36%	54%	54%	55%	57%	50%	47%

**Comments:** An outstanding bull here who has been a real favourite all the way! He is by a very good yearling later sold to Grampians Station and is out of a 2-year heifer. Used as a yearling over stud heifers, he displays terrific depth of flank which indicates easy-doing attributes and ensured he bounced back strongly and kept on doing all winter. Once again, those important rib and rump fats are in the top 5% for the breed, and with short days to calving and good scrotal size he has strong fertility traits. Plenty of growth, very sound, with a good structural assessment and a top outlook. Real potential here!

Purchaser:

Price: \$

# 2 YEAR OLD ANGUS BULLS

## Lot: 5 MEADOWSLEA Q318

Birth Date: 27/09/19 ID No: 19134019318

TURIHAUA CRUMBLE Y167

**TURIHAUA CRUMP E5 (ET)**

TURIHAUA Q263

MEADOWSLEA MEAT MACHINE G9

**MEADOWSLEA L339**

MEADOWSLEA F570



INDEXES	
SR	HD
+\$108	+\$95

### 2021 TRANSTASMAN ANGUS CATTLE EVALUATION EBVS

CED	DTRS	GL	BW	200	400	600	MCW	Milk
<b>+3.4</b>	<b>+0.2</b>	<b>-5.8</b>	<b>+2.9</b>	<b>+28</b>	<b>+58</b>	<b>+79</b>	<b>+73</b>	<b>+17</b>
56%	49%	60%	73%	69%	70%	68%	66%	62%

SS	DC	CW	EMA	Rib Fat	Rump	RBY %	IMF %
<b>+2.2</b>	<b>-7.6</b>	<b>+23</b>	<b>+2.9</b>	<b>+2.3</b>	<b>+1.7</b>	<b>+0.3</b>	<b>-0.8</b>
72%	54%	62%	62%	64%	64%	62%	60%

**Comments:** Here is another bull we really liked the look of as a yearling and selected to use over stud heifers. Bred to be the thick and square type that do so well for us, he is a classic Crump son with added thickness from Meat Machine on the dam side. A lovely, moderate-framed, quiet bull, he is a great pick for heifer mating with calving ease, very low birthweight, and short gestation. He displays a great coat, depth of body, and terrific easy-doing attributes. Another very good pick with strong fertility traits and good structural assessment.

**Purchaser:**

**Price: \$**

## Lot: 6 MEADOWSLEA Q332

Birth Date: 30/09/19 ID No: 19134019332

MEADOWSLEA L226

**MEADOWSLEA N415**

MEADOWSLEA K023

TURIHAUA CRUMP E5 (ET)

**MEADOWSLEA N131**

MEADOWSLEA F545

INDEXES	
SR	HD
+\$120	+\$81

### 2021 TRANSTASMAN ANGUS CATTLE EVALUATION EBVS

CED	DTRS	GL	BW	200	400	600	MCW	Milk
<b>+0.0</b>	<b>-2.6</b>	<b>-4.5</b>	<b>+3.5</b>	<b>+33</b>	<b>+64</b>	<b>+82</b>	<b>+72</b>	<b>+15</b>
48%	36%	43%	70%	63%	59%	60%	59%	47%

SS	DC	CW	EMA	Rib Fat	Rump	RBY %	IMF %
<b>+2.4</b>	<b>-8.6</b>	<b>+27</b>	<b>+2.5</b>	<b>+2.3</b>	<b>+2.8</b>	<b>-0.9</b>	<b>+0.7</b>
51%	38%	51%	47%	51%	49%	48%	46%

**Comments:** Here is a very good clean-shouldered bull who is a great heifer mating prospect. Very strong fertility traits, deep, thick, with a very good hindquarter, balance, and outlook. Sired by a yearling and out of a 2-year Crump heifer. These young genetics are really leading the way as we continue to breed cattle more and more suited to hill country. Good efficient figures with moderate birthweight and cow size. Q332 has powerful fertility traits with good scrotal size and those signature short days to calving, rib fat, and rump fat in the top 5% for the breed - all combining for a good SR Index. A very easy-doing and well-balanced bull.

**Purchaser:**

**Price: \$**

**MEADOWSLEA**  
ANGUS & SHEEP GENETICS

# 2 YEAR OLD ANGUS BULLS

## Lot: 7 MEADOWSLEA Q330

Birth Date: 30/09/19 ID No: 19134019330

MEADOWSLEA L226

MEADOWSLEA N257

MEADOWSLEA F801

TURIHAUA CRUMP E5 (ET)

MEADOWSLEA N260

MEADOWSLEA K017



### INDEXES

SR HD

+\$123 +\$93

### 2021 TRANSTASMAN ANGUS CATTLE EVALUATION EBVS

CED	DTRS	GL	BW	200	400	600	MCW	Milk
+2.7	-1.3	-4.1	+2.4	+30	+63	+76	+70	+16
48%	39%	52%	71%	65%	66%	69%	62%	51%

SS	DC	CW	EMA	Rib Fat	Rump	RBV %	IMF %
+2.7	-8.2	+30	+2.3	+1.0	+0.2	+0.0	+0.7
69%	40%	56%	55%	57%	58%	53%	51%

**Comments:** A very exciting pedigree here to lead off this pen. Sire N257 was sold in the 2019 Bull Sale for the top price of \$22,000 to Umbrella Range Angus, and the dam of N257 was the top price cow in our 2020 Female Sale, sold for \$5,500 to Australia. The dam of Q330 is a very smart 2-year Crump heifer who was later sold to Wether Hills Angus. The grandam of Q330 is the record-breaking 10-year-old cow G1000, sold to Australia for \$16,000. Q330 has very strong maternal and fertility traits with calving ease and low birthweight, while his scrotal size and short days to calving are in the top 10% for the breed. He shows all the depth and thickness you would expect from his pedigree and is a lovely easy-doing heifer mating type bull.

Purchaser:

Price: \$

## Lot: 8 MEADOWSLEA Q298

Birth Date: 25/09/19 ID No: 19134019298

MEADOWSLEA L226

MEADOWSLEA N257

MEADOWSLEA F801

MEADOWSLEA L252

MEADOWSLEA N251

MEADOWSLEA L057



### INDEXES

SR HD

+\$131 +\$86

### 2021 TRANSTASMAN ANGUS CATTLE EVALUATION EBVS

CED	DTRS	GL	BW	200	400	600	MCW	Milk
+2.5	-0.8	-3.7	+2.7	+30	+64	+61	+48	+16
46%	35%	47%	71%	65%	66%	69%	64%	49%

SS	DC	CW	EMA	Rib Fat	Rump	RBV %	IMF %
+2.2	-5.9	+26	+1.5	+1.7	+1.4	+0.0	+0.4
69%	37%	55%	54%	56%	57%	51%	48%

**Comments:** Another very good heifer mating option here, again by N257, but this time out of a 2-year heifer going back to Meat Machine, giving him that powerful hindquarter so dominant in that bloodline. Plenty of calving ease with a low birthweight and strong fertility traits of scrotal size and short days to calving. He displays plenty of easy-doing attributes with good strong fats and moderate cow size. This all gives a very strong SR Index that is in the top 10% for the breed in NZ. A sound bull with a good structural assessment.

Purchaser:

Price: \$

MEADOWSLEA  
ANGUS & SHEEP GENETICS

# 2 YEAR OLD ANGUS BULLS

## Lot: 9 MEADOWSLEA Q225

Birth Date: 14/09/19 ID No: 19134019225

RANGATIRA 13-38

MEADOWSLEA M429

MEADOWSLEA G922

TE MANIA INFINITY 04 379

MEADOWSLEA G843

MEADOWSLEA 898



### INDEXES

SR

HD

+\$105

+\$101

### 2021 TRANSTASMAN ANGUS CATTLE EVALUATION EBVS

CED	DTRS	GL	BW	200	400	600	MCW	Milk
<b>+4.5</b>	<b>+3.9</b>	<b>-5.1</b>	<b>+2.7</b>	<b>+29</b>	<b>+57</b>	<b>+72</b>	<b>+64</b>	<b>+13</b>
54%	42%	83%	75%	70%	70%	73%	67%	56%

SS	DC	CW	EMA	Rib Fat	Rump	RBV %	IMF %
<b>+2.2</b>	<b>-3.6</b>	<b>+28</b>	<b>+3.2</b>	<b>+1.0</b>	<b>+1.5</b>	<b>+0.6</b>	<b>+0.4</b>
72%	43%	59%	59%	60%	61%	55%	53%

**Comments:** Great calving ease and heifer mating option here again with this well-bred bull. His sire M429 was top price bull sold to Red Oak Stud in the 2018 sale and was a son of the \$100,000 Rangatira bull 13-38. His dam G843 is a top 10-year-old cow by Infinity who was sold in our 2021 female sale to Wether Hills Angus. Q225 is a nice, moderate-framed, well put-together, and deep bodied bull. He has super heifer mating figures with strong calving ease, short gestation, and low birthweight.

Purchaser:

Price: \$

## Lot: 10 MEADOWSLEA Q147

Birth Date: 16/09/19 ID No: 19134019147

MEADOWSLEA D227

MEADOWSLEA F540

MEADOWSLEA D042

GLANWORTH WAIGROUP 0816

MEADOWSLEA H200

MEADOWSLEA B558



### INDEXES

SR

HD

+\$123

+\$90

### 2021 TRANSTASMAN ANGUS CATTLE EVALUATION EBVS

CED	DTRS	GL	BW	200	400	600	MCW	Milk
<b>+3.8</b>	<b>+0.8</b>	<b>-6.4</b>	<b>+2.8</b>	<b>+28</b>	<b>+57</b>	<b>+64</b>	<b>+60</b>	<b>+15</b>
57%	47%	59%	75%	71%	72%	74%	70%	64%

SS	DC	CW	EMA	Rib Fat	Rump	RBV %	IMF %
<b>+2.3</b>	<b>-8.2</b>	<b>+31</b>	<b>+3.3</b>	<b>+2.0</b>	<b>+2.5</b>	<b>-0.7</b>	<b>+0.8</b>
73%	55%	63%	62%	63%	64%	60%	58%

**Comments:** To lead out this next pen we have well-bred bull who is really on the move. A son of old F540 himself and out of a great old 9-year cow by Glanworth 0816. Grandam was also a top performing cow and produced 2 stud bulls. Q147 has great calving ease, low birthweight, and short gestation. He is very strong in the fertility traits with good scrotal size, while his short days to calving and fats are in the top 10% for the breed. This bull is a top heifer mating prospect and is really worth a close look. The real F540 type, super sound with a top structural assessment.

Purchaser:

Price: \$



# 2 YEAR OLD ANGUS BULLS

## Lot: 11 MEADOWSLEA Q282

Birth Date: 22/09/19 ID No: 19134019282

TURIHAUA CRUMBLE Y167

**TURIHAUA CRUMP E5 (ET)**

TURIHAUA Q263

KAHARAU CLARION 844

**MEADOWSLEA H163**

MEADOWSLEA D208



### INDEXES

SR

HD

+\$104

+\$70

### 2021 TRANSTASMAN ANGUS CATTLE EVALUATION EBVS

CED	DTRS	GL	BW	200	400	600	MCW	Milk
+0.0	-1.3	-5.5	+1.8	+23	+50	+60	+64	+15
58%	51%	61%	75%	71%	71%	73%	69%	64%

SS	DC	CW	EMA	Rib Fat	Rump	RBV %	IMF %
+0.8	-9.0	+16	+2.9	+1.9	+1.4	-0.8	+0.1
73%	56%	64%	63%	64%	65%	63%	61%

**Comments:** A nicely balanced Crump son with great top-line and strong hindquarter. He has the classic Crump coat and the depth of body his progeny are noted for. Great heifer mating figures with super low birth weight and short gestation. Thick, deep, square, with a good backend and good structural score once again.

Purchaser:

Price: \$

## Lot: 12 MEADOWSLEA Q510

Birth Date: 27/10/19 ID No: 19134019510

MEADOWSLEA MEAT MACHINE G914

**MEADOWSLEA K703**

MEADOWSLEA H126

MEADOWSLEA J558

**MEADOWSLEA L311**

MEADOWSLEA G831



### INDEXES

SR

HD

+\$124

+\$82

### 2021 TRANSTASMAN ANGUS CATTLE EVALUATION EBVS

CED	DTRS	GL	BW	200	400	600	MCW	Milk
+3.8	-0.8	-4.8	+1.9	+22	+46	+52	+41	+14
51%	37%	41%	74%	69%	70%	72%	67%	54%

SS	DC	CW	EMA	Rib Fat	Rump	RBV %	IMF %
+0.4	-8.3	+17	+5.0	+4.2	+4.4	-0.9	-0.7
72%	44%	59%	58%	59%	60%	54%	53%

**Comments:** A K703 son offering super heifer-mating figures with great calving ease and exceptional low birth weight in a moderate frame. Has the really strong rib and rump fat figures that produce the easy-doing attributes that the K703 progeny are known for, and is very sound with a good structural assessment and a nice topline.

Purchaser:

Price: \$

# YOU CAN RELY ON FMG TO STAND BY YOU. LITERALLY.



A bull is a big investment. Which is why FMG is right there with you to ensure you get the very best cover on sale day, and the best service every day after that. That's because we understand livestock insurance as much as we understand the importance of personal service. So talk to your FMG Rural Manager about FMG Premier Bull Sales cover. All bulls sold at auction up to \$50,000 can be covered for 6.5% of the purchase price and those sold at FMG Premier Bull Sales are insured at the fall of the hammer for 14 days free.\* To find out more, call us on 0800 366 466 or visit [fmg.co.nz/bulls](http://fmg.co.nz/bulls)

\* Subject to standard underwriting criteria. Please note this is only a summary of FMG products and services and is subject to our specific product documentation. For full details, refer to the relevant policy wordings at [fmg.co.nz](http://fmg.co.nz)

***We're here for the good of the country.***

**FMG**  
Advice & Insurance

# 2 YEAR OLD ANGUS BULLS

## Lot: 13 MEADOWSLEA Q222

Birth Date: 14/09/19 ID No: 19134019222

MATAURI REALITY 839

**TAIMATE LAZARUS L12**

TAIMATE 1348

TURIHAUA CRUMP E5 (ET)

**MEADOWSLEA H305**

MEADOWSLEA D186



### INDEXES

SR

HD

+\$117

+\$95

### 2021 TRANSTASMAN ANGUS CATTLE EVALUATION EBVS

CED	DTRS	GL	BW	200	400	600	MCW	Milk
+2.5	+1.4	-5.5	+4.1	+35	+61	+84	+88	+11
56%	46%	64%	73%	68%	69%	68%	65%	59%
SS	DC	CW	EMA	Rib Fat	Rump	RBY %	IMF %	
+2.4	-7.8	+27	+2.9	+2.7	+2.3	-0.2	+0.6	
70%	45%	59%	59%	60%	60%	57%	57%	

**Comments:** To lead off this pen we have selected an upstanding bull with an exciting pedigree. This is a son of the widely used Taimate Lazarus bull. His mother is a high-performing Crump daughter who is in the AI programme and has bred a stud bull L349 sold to Linnburn Station for \$11,000. Q222 was born a twin and has very impressive figures. He has moderate birth weight with calving ease and short gestation. Terrific fertility traits with scrotal size, short days to calving, rib fat, and rump fat all in the top 20% for the breed. Thick and deep with a very good backend and good structural score. Potential here and worth close inspection.

**Purchaser:**

**Price: \$**

## Lot: 14 MEADOWSLEA Q425

Birth Date: 22/10/19 ID No: 19134019425

MEADOWSLEA MEAT MACHINE G914

**MEADOWSLEA K703**

MEADOWSLEA H126

MEADOWSLEA D140

**MEADOWSLEA G1038**

MEADOWSLEA 112



### INDEXES

SR

HD

+\$107

+\$87

### 2021 TRANSTASMAN ANGUS CATTLE EVALUATION EBVS

CED	DTRS	GL	BW	200	400	600	MCW	Milk
+2.4	-2.0	-4.0	+3.6	+29	+59	+72	+63	+14
52%	38%	40%	75%	70%	70%	73%	68%	56%
SS	DC	CW	EMA	Rib Fat	Rump	RBY %	IMF %	
+3.2	-5.4	+26	+3.0	+2.8	+3.5	-0.3	-0.3	
73%	46%	59%	59%	60%	61%	55%	53%	

**Comments:** A K703 son here with a bit more frame about him. The same great top-line, easy-fleshing, and strong hindquarter we always expect from this bloodline. Strong calving ease with low birthweight and very strong fertility traits with scrotal and rib and rump fats in the top 5% for the breed. Another super-sound K703 son that is really coming on and will develop into an impressive sire.

**Purchaser:**

**Price: \$**

# 2 YEAR OLD ANGUS BULLS

## Lot: 15 MEADOWSLEA Q248

Birth Date: 18/09/19 ID No: 19134019248

MEADOWSLEA K904

**MEADOWSLEA N119**

MEADOWSLEA E350

GOLDWYN 017

**MEADOWSLEA L192**

MEADOWSLEA H146



INDEXES	
SR	HD
+\$106	+\$73

### 2021 TRANSTASMAN ANGUS CATTLE EVALUATION EBVS

CED	DTRS	GL	BW	200	400	600	MCW	Milk
-2.8	-1.2	-5.1	+4.6	+35	+65	+83	+93	+13
49%	36%	54%	73%	67%	68%	71%	65%	50%

SS	DC	CW	EMA	Rib Fat	Rump	RBY %	IMF %
+2.9	-7.6	+30	+1.0	+1.9	+2.6	-0.8	+1.8
69%	39%	56%	55%	56%	58%	51%	49%

**Comments:** Here is a good N119 son out of a high-performing Goldwyn 17 cow who bred lot 3 in our 2020 bull sale, sold to Annandale at \$14,000. Q248 has terrific fertility traits with his scrotal size, short days to calving, rib fat, and rump fat all in the top 10% for the breed. Clean shoulders and a lovely square body with width across the loin make him very suitable for the hill country environment. Very strong IMF coming from Goldwyn 017 in his background. A good, very sound, well-balanced, mid-frame bull.

**Purchaser:**

**Price: \$**

## Lot: 16 MEADOWSLEA Q242

Birth Date: 17/09/19 ID No: 19134019242

RANGATIRA 13-38

**MEADOWSLEA M429**

MEADOWSLEA G922

TURIHAUA CRUMP E5 (ET)

**MEADOWSLEA H101**

MEADOWSLEA F642



INDEXES	
SR	HD
+\$115	+\$82

### 2021 TRANSTASMAN ANGUS CATTLE EVALUATION EBVS

CED	DTRS	GL	BW	200	400	600	MCW	Milk
+0.3	+4.3	-3.7	+4.4	+28	+57	+76	+78	+13
53%	40%	83%	75%	69%	70%	73%	67%	54%

SS	DC	CW	EMA	Rib Fat	Rump	RBY %	IMF %
+1.4	-7.6	+26	+3.0	+1.2	+1.5	+0.6	-0.5
72%	43%	59%	58%	59%	60%	55%	53%

**Comments:** A son of M429 who was sold to Red Oak Stud for \$18,000, and a grandson of the \$100,000 Rangatira bull 13-38. Out of a good Crump cow who is breeding very strongly with two previous good sale bulls. Moderate-framed with good balance about him.

**Purchaser:**

**Price: \$**

# 2 YEAR OLD ANGUS BULLS

## Lot: 17 MEADOWSLEA Q520

Birth Date: 17/10/19 ID No: 19134019520

WAITERENUI ALLIANCE J144



MEADOWSLEA N340

MEADOWSLEA D044

RATANUI LAD 21

MEADOWSLEA M522

MEADOWSLEA J402

INDEXES	
SR	HD
+\$79	+\$77

### 2021 TRANSTASMAN ANGUS CATTLE EVALUATION EBVS

CED	DTRS	GL	BW	200	400	600	MCW	Milk
-2.2	-7.1	-3.6	+5.8	+30	+63	+88	+89	+14
46%	33%	39%	70%	63%	64%	66%	61%	45%
SS	DC	CW	EMA	Rib Fat	Rump	RBY %	IMF %	
+2.2	-4.2	+30	+2.0	+0.5	+0.5	+0.7	+0.4	
68%	35%	52%	52%	53%	55%	48%	45%	

**Comments:** Here is a nice clean-shouldered, upstanding bull with a bit of scale about him. By a good yearling who was very deep and thick and was later sold to Lochaber Station, and going back to the Waiterenui Alliance bloodline. Out of a cow by Ratanui 21 who left very easy doing types. Q520 is a well-balanced bull with a good outlook.

Purchaser:

Price: \$

## Lot: 18 MEADOWSLEA Q264

Birth Date: 20/09/19 ID No: 19134019264

MEADOWSLEA J514

MEADOWSLEA L226

MEADOWSLEA H104

MEADOWSLEA F566

MEADOWSLEA H205

MEADOWSLEA F543

INDEXES	
SR	HD
+\$112	+\$93

### 2021 TRANSTASMAN ANGUS CATTLE EVALUATION EBVS

CED	DTRS	GL	BW	200	400	600	MCW	Milk
+2.8	-5.4	-3.8	+3.4	+34	+68	+80	+60	+17
51%	39%	52%	75%	70%	71%	74%	69%	57%
SS	DC	CW	EMA	Rib Fat	Rump	RBY %	IMF %	
+2.2	-4.8	+32	+5.8	+1.5	+1.8	+0.0	-0.4	
72%	44%	59%	59%	60%	61%	55%	54%	

**Comments:** A son of L226. Nice medium birthweight with calving ease and clean shoulders for heifer mating. Scanned with very good muscle and strong fats with a good hindquarter. Strong fertility traits and an efficient moderate cow giving a good SR Index.

Purchaser:

Price: \$

# 2 YEAR OLD ANGUS BULLS

## Lot: 19 MEADOWSLEA Q329

Birth Date: 28/09/19 ID No: 19134019329

TURIHAUA CRUMBLE Y167

**TURIHAUA CRUMP E5 (ET)**

TURIHAUA Q263

MEADOWSLEA J479

**MEADOWSLEA M468**

MEADOWSLEA G892



INDEXES	
SR	HD
+\$102	+\$70

### 2021 TRANSTASMAN ANGUS CATTLE EVALUATION EBVS

CED	DTRS	GL	BW	200	400	600	MCW	Milk
<b>-1.2</b>	<b>-1.9</b>	<b>-4.5</b>	<b>+3.6</b>	<b>+25</b>	<b>+55</b>	<b>+72</b>	<b>+73</b>	<b>+12</b>
56%	48%	59%	74%	69%	69%	71%	68%	60%

SS	DC	CW	EMA	Rib Fat	Rump	RBY %	IMF %
<b>+1.3</b>	<b>-7.2</b>	<b>+21</b>	<b>+2.3</b>	<b>+2.0</b>	<b>+1.6</b>	<b>-0.2</b>	<b>-0.3</b>
71%	51%	62%	61%	63%	63%	62%	59%

**Comments:** Here is a classic Crump son out of a good breeding line. Grandam G892 is a great old cow who bred a top bull N144, sold to Grays Hills in 2019, and she was sold to Waimara Angus for \$4500 in our 2021 Female Sale. Q329 has low birth weight and is strong in the fertility traits of short days to calving, rib fat, and rump fat. Well-balanced, with a lovely top-line, good coat, and depth of body.

**Purchaser:**

**Price: \$**

## Lot: 20 MEADOWSLEA Q365

Birth Date: 02/10/19 ID No: 19134019365

MEADOWSLEA J479

**MEADOWSLEA N451**

MEADOWSLEA H320

MEADOWSLEA F540

**MEADOWSLEA N329**

MEADOWSLEA H104

INDEXES	
SR	HD
+\$119	+\$83

### 2021 TRANSTASMAN ANGUS CATTLE EVALUATION EBVS

CED	DTRS	GL	BW	200	400	600	MCW	Milk
<b>-0.3</b>	<b>-3.6</b>	<b>-4.1</b>	<b>+4.5</b>	<b>+33</b>	<b>+69</b>	<b>+86</b>	<b>+79</b>	<b>+16</b>
48%	34%	42%	70%	64%	65%	69%	63%	45%

SS	DC	CW	EMA	Rib Fat	Rump	RBY %	IMF %
<b>+3.3</b>	<b>-7.7</b>	<b>+36</b>	<b>+3.1</b>	<b>+1.0</b>	<b>+1.8</b>	<b>-0.1</b>	<b>+0.7</b>
69%	38%	54%	54%	54%	56%	49%	46%

**Comments:** Another very clean-shouldered, upstanding bull. Out of a cow by F540 so strong fertility traits and easy-doing attributes. Nice balance and outlook to him.

**Purchaser:**

**Price: \$**

# 2 YEAR OLD ANGUS BULLS

## Lot: 21 MEADOWSLEA Q486

Birth Date: 08/11/19 ID No: 19134019486

TURIROA RAMBLE 11541 (ET)

**TURIROA 14830 (ET)**

TURIROA TULIP 459

MEADOWSLEA J558

**MEADOWSLEA L094**

MEADOWSLEA F725



### INDEXES

SR	HD
+\$87	+\$39

### 2021 TRANSTASMAN ANGUS CATTLE EVALUATION EBVS

CED	DTRS	GL	BW	200	400	600	MCW	Milk
-9.8	-7.8	-3.2	+6.6	+35	+64	+86	+89	+12
51%	37%	42%	72%	67%	68%	69%	64%	51%

SS	DC	CW	EMA	Rib Fat	Rump	RBV %	IMF %
+1.5	-6.0	+33	+1.7	+2.2	+3.4	-0.5	-0.2
67%	38%	56%	54%	56%	56%	51%	49%

**Comments:** A big strong bull suitable for mating adult cows. Plenty of depth of body, very strong rib and rump fats, and short days to calving. Great outlook on this chap.

**Purchaser:**

**Price: \$**

## Lot: 22 MEADOWSLEA Q122

Birth Date: 04/09/19 ID No: 19134019122

MEADOWSLEA F540

**MEADOWSLEA M564**

MEADOWSLEA G1000

TURHAUA CRUMP E5 (ET)

**MEADOWSLEA N331**

MEADOWSLEA J578



### INDEXES

SR	HD
+\$122	+\$84

### 2021 TRANSTASMAN ANGUS CATTLE EVALUATION EBVS

CED	DTRS	GL	BW	200	400	600	MCW	Milk
-0.5	-3.5	-4.5	+3.4	+36	+70	+88	+84	+18
51%	40%	49%	73%	68%	68%	71%	64%	50%

SS	DC	CW	EMA	Rib Fat	Rump	RBV %	IMF %
+2.7	-8.9	+38	+5.2	+3.0	+2.6	-0.7	+1.0
71%	42%	57%	57%	58%	59%	54%	52%

**Comments:** Here is a son of M564, and a grandson of the record-breaking cow G1000. This bloodline always has terrific EMA - this bull is no exception scanning with the biggest EMA in this group. He is out of a very good Crump cow who was a feature lot in our 2020 sale selling to Wether Hill Angus. Very strong fertility traits with scrotal size and rib and rump fats in the top 10% for the breed while his short days to calving rank him in the top 1%. He has easy-doing ability with a low birthweight all combining for a top SRI. index.

**Purchaser:**

**Price: \$**

**MEADOWSLEA**  
ANGUS & SHEEP GENETICS



A high-contrast, black and white close-up photograph of an Angus cow's face, focusing on its eye and nose. The cow's fur is dark and textured, with some lighter patches around the eye and nose. The lighting is dramatic, highlighting the cow's features against a dark background.

# **MEET ANGUS. HE'S BALANCED.**

When it comes to balancing your system  
productivity and genetic traits - you can't go  
past New Zealand Angus

- Bred for Balance
- Farmed for Balance
- Recorded for Balance
- Consumed for Balance

**ANGUS NEW ZEALAND**  
IT TAKES GREAT BALANCE  
TO DELIVER GREAT RESULTS.

[angusnz.com](http://angusnz.com)

**ANGUS**  
■ NEW ZEALAND



# 2 YEAR OLD ANGUS BULLS

## Lot: 23 MEADOWSLEA Q409

Birth Date: 14/10/19 ID No: 19134019409

MEADOWSLEA F540

**MEADOWSLEA M564**

MEADOWSLEA G1000

TURIHAUA CRUMP E5 (ET)

**MEADOWSLEA M531**

MEADOWSLEA D135

INDEXES	
SR	HD
+\$107	+\$76

### 2021 TRANSTASMAN ANGUS CATTLE EVALUATION EBVS

CED	DTRS	GL	BW	200	400	600	MCW	Milk
-4.1	-5.2	-4.2	+6.0	+42	+79	+108	+101	+16
51%	40%	50%	73%	68%	69%	72%	66%	51%

SS	DC	CW	EMA	Rib Fat	Rump	RBV %	IMF %
+1.6	-7.2	+46	+4.4	+2.3	+1.8	-0.5	+0.9
71%	43%	58%	57%	58%	59%	54%	52%

**Comments:** Another M564 son out of a Crump cow. Extra growth with a bit more frame but the same strong EMA and very good fats this bloodline is known for.

**Purchaser:**

**Price: \$**

## Lot: 24 MEADOWSLEA Q514

Birth Date: 25/10/19 ID No: 19134019514

RANGATIRA 13-38

**MEADOWSLEA M452**

MEADOWSLEA H104

MEADOWSLEA F540

**MEADOWSLEA H107**

MEADOWSLEA F529

INDEXES	
SR	HD
+\$107	+\$88

### 2021 TRANSTASMAN ANGUS CATTLE EVALUATION EBVS

CED	DTRS	GL	BW	200	400	600	MCW	Milk
-1.8	-1.8	-5.1	+6.5	+45	+88	+113	+108	+17
51%	38%	57%	74%	69%	70%	72%	66%	54%

SS	DC	CW	EMA	Rib Fat	Rump	RBV %	IMF %
+1.1	-5.8	+50	+1.9	+1.8	+1.6	-0.7	+1.4
71%	43%	58%	58%	59%	60%	54%	52%

**Comments:** Plenty of scale in this M452 son, who goes back to the \$100,000 Rangatira. Out of a cow by F540. This is the highest-growth bull in the sale, but he still has very strong fats, with a rugged coat, balance, and outlook.

**Purchaser:**

**Price: \$**

# 2 YEAR OLD ANGUS BULLS

## Lot: 25 MEADOWSLEA Q482

Birth Date: 07/11/19 ID No: 19134019482

RANGATIRA 13-38

MEADOWSLEA M452

MEADOWSLEA H104

TURIHAUA CRUMP E5 (ET)

MEADOWSLEA H274

MEADOWSLEA C905



### INDEXES

SR

HD

### 2021 TRANSTASMAN ANGUS CATTLE EVALUATION EBVS

CED	DTRS	GL	BW	200	400	600	MCW	Milk

SS	DC	CW	EMA	Rib Fat	Rump	RBY %	IMF %

**Comments:** Plenty of scale in this grandson of the \$100,000 bull. Out of a cow by Turihaua Crump he has a fair bit to offer. Figures will be available by sale day - we had to redo his DNA parentage and the EBVs are still pending at time of printing. Tremendous strength and power with a strong coat. Worth having a close look at!

Purchaser:

Price: \$

## Lot: 26 MEADOWSLEA Q371

Birth Date: 06/10/19 ID No: 19134019371

S CHISUM 6175 (IMP USA)

TURIHAUA LOYALTY L44 (ET)

TURIHAUA D224 (ET)

KAHARAU 07-558

MEADOWSLEA H254

MEADOWSLEA D226



### INDEXES

SR

HD

+\$135

+\$76

### 2021 TRANSTASMAN ANGUS CATTLE EVALUATION EBVS

CED	DTRS	GL	BW	200	400	600	MCW	Milk
-3.4	+0.3	-2.8	+5.4	+42	+78	+94	+80	+11
50%	44%	52%	66%	68%	70%	72%	67%	59%

SS	DC	CW	EMA	Rib Fat	Rump	RBY %	IMF %
+2.2	-5.6	+47	+3.3	+0.9	+1.4	+0.3	+0.1
72%	46%	59%	59%	60%	61%	56%	55%

**Comments:** Bigger-framed Loyalty bull with plenty of growth. Strong fertility traits give a good self-replacing index in the top 10% for the breed in NZ. Another big, powerful bull with a good structural assessment score.

Purchaser:

Price: \$

# 2 YEAR OLD ANGUS BULLS

## Lot: 27 MEADOWSLEA Q519

Birth Date: 18/10/19 ID No: 19134019519

MEADOWSLEA F540

**MEADOWSLEA N270**

MEADOWSLEA C914

STERN 0713

**MEADOWSLEA G982**

MEADOWSLEA D135

INDEXES	
SR	HD
+\$85	+\$84

### 2021 TRANSTASMAN ANGUS CATTLE EVALUATION EBVS

CED	DTRS	GL	BW	200	400	600	MCW	Milk
-0.7	-5.4	-4.5	+5.5	+38	+71	+92	+93	+18
44%	37%	45%	63%	65%	66%	69%	63%	53%

SS	DC	CW	EMA	Rib Fat	Rump	RBV %	IMF %
+0.9	-5.7	+44	+2.9	+0.8	+1.4	-0.7	+1.6
70%	44%	56%	56%	56%	58%	52%	49%

**Comments:** An F540 grandson here with a lot of scale about him. Plenty of growth in this upstanding, stylish bull.

**Purchaser:**

**Price: \$**

## Lot: 28 MEADOWSLEA Q503

Birth Date: 14/11/19 ID No: 19134019503

MEADOWSLEA F540

**MEADOWSLEA L256**

MEADOWSLEA H246

TURIHAUA CRUMP E5 (ET)

**MEADOWSLEA M623**

MEADOWSLEA J494

INDEXES	
SR	HD
+\$97	+\$86

### 2021 TRANSTASMAN ANGUS CATTLE EVALUATION EBVS

CED	DTRS	GL	BW	200	400	600	MCW	Milk
+0.9	-2.4	-5.2	+4.3	+31	+66	+87	+93	+17
51%	40%	48%	73%	67%	67%	69%	64%	51%

SS	DC	CW	EMA	Rib Fat	Rump	RBV %	IMF %
+1.6	-8.0	+33	+2.0	+1.2	+1.3	-0.6	+0.5
54%	42%	56%	50%	54%	52%	51%	49%

**Comments:** A medium-birthweight bull with calving ease, moderate growth, and easy-doing fats.

**Purchaser:**

**Price: \$**



Proven performance.



Error free, convenient  
DNA sampling with Allflex TSU  
(tissue sampling unit).

**Allflex**®

Livestock Intelligence

Duncan Steans 027446 5508 (Upper North)  
Mark McManaway 027 517 6693 (Lower North)  
Steve Kelly 027 560 2699 (South Island)

[www.allflex.co.nz](http://www.allflex.co.nz)

# 2 YEAR OLD ANGUS BULLS

## Lot: 29 MEADOWSLEA Q205

Birth Date: 09/09/19 ID No: 19134019205

MATAURI REALITY 839

**TAIMATE LAZARUS L12**

TAIMATE 1348

GLANWORTH WAIGROUP 0816

**MEADOWSLEA G892**

MEADOWSLEA D077

INDEXES	
SR	HD
+\$132	+\$109

### 2021 TRANSTASMAN ANGUS CATTLE EVALUATION EBVS

CED	DTRS	GL	BW	200	400	600	MCW	Milk
+6.9	+5.3	-7.7	+2.7	+31	+59	+69	+56	+10
57%	45%	83%	75%	71%	71%	73%	68%	60%
SS	DC	CW	EMA	Rib Fat	Rump	RBV %	IMF %	
+3.1	-5.2	+28	+4.9	+1.7	+1.3	+0.6	+0.4	
73%	43%	61%	61%	62%	62%	57%	56%	

**Comments:** Exceptionally good figures with this Lazarus son. Very strong calving ease, low birthweight, and moderate cow size. Good easy-doing bull with strong fertility traits and a top index.

**Purchaser:**

**Price: \$**

## Lot: 30 MEADOWSLEA Q138

Birth Date: 12/09/19 ID No: 19134019138

MANGAPAPA 443

**RATANUI NUGGET 605**

RATANUI 390 (RP)

MEADOWSLEA L215

**MEADOWSLEA N301**

MEADOWSLEA L339

INDEXES	
SR	HD
+\$100	+\$59

### 2021 TRANSTASMAN ANGUS CATTLE EVALUATION EBVS

CED	DTRS	GL	BW	200	400	600	MCW	Milk
-4.2	-4.2	-2.3	+4.0	+27	+49	+65	+65	+9
46%	30%	37%	71%	65%	65%	67%	62%	44%
SS	DC	CW	EMA	Rib Fat	Rump	RBV %	IMF %	
+1.8	-5.1	+22	+4.8	+2.1	+2.4	+0.7	-0.9	
68%	31%	53%	52%	53%	55%	48%	44%	

**Comments:** Moderate birthweight, moderate-framed bull here with good muscle and strong fats.

**Purchaser:**

**Price: \$**

# 2 YEAR OLD ANGUS BULLS

## Lot: 31 MEADOWSLEA Q239

Birth Date: 17/09/19 ID No: 19134019239

GOLDWYN 017

MEADOWSLEA N465

MEADOWSLEA K910

MEADOWSLEA F540

MEADOWSLEA N313

MEADOWSLEA C949

INDEXES	
SR	HD
+\$118	+\$88

### 2021 TRANSTASMAN ANGUS CATTLE EVALUATION EBVS

CED	DTRS	GL	BW	200	400	600	MCW	Milk
+2.6	+0.6	-5.2	+2.2	+28	+62	+70	+62	+17
50%	38%	50%	72%	65%	64%	69%	62%	49%
SS	DC	CW	EMA	Rib Fat	Rump	RBY %	IMF %	
+2.5	-7.7	+29	+2.7	+2.9	+3.2	-1.7	+2.2	
53%	40%	55%	55%	56%	57%	52%	50%	

**Comments:** Nice low birthweight bull with strong calving ease figures and very clean shoulders. Strong fertility, very good rib and rump fats, and exceptional IMF. Out of a good cow by F540. Good bull and worth a close look late in the catalogue.

Purchaser:

Price: \$

## Lot: 32 MEADOWSLEA Q246

Birth Date: 17/09/19 ID No: 19134019246

MATAURI REALITY 839

TAIMATE LAZARUS L12

TAIMATE 1348

MEADOWSLEA C804

MEADOWSLEA G1076

MEADOWSLEA D214

INDEXES	
SR	HD
+\$123	+\$104

### 2021 TRANSTASMAN ANGUS CATTLE EVALUATION EBVS

CED	DTRS	GL	BW	200	400	600	MCW	Milk
+4.9	+2.9	-3.7	+2.7	+34	+63	+80	+74	+15
57%	45%	83%	75%	71%	71%	74%	69%	60%
SS	DC	CW	EMA	Rib Fat	Rump	RBY %	IMF %	
+2.7	-7.5	+30	+4.9	+1.4	+2.0	-0.1	+0.6	
72%	45%	61%	61%	62%	63%	57%	57%	

**Comments:** Another Lazarus son ideal for heifer mating. Very good calving ease and low birthweight. Good balance of figures.

Purchaser:

Price: \$

# 2 YEAR OLD ANGUS BULLS

## Lot: 33 MEADOWSLEA Q199

Birth Date: 08/10/19 ID No: 19134019199

GLANWORTH WAIGROUP 0816

MEADOWSLEA MEAT MACHINE G914

MEADOWSLEA D101

WAITERENUI ALLIANCE J144

MEADOWSLEA M1077

MEADOWSLEA H108



INDEXES	
SR	HD
+\$114	+\$101

### 2021 TRANSTASMAN ANGUS CATTLE EVALUATION EBVS

CED	DTRS	GL	BW	200	400	600	MCW	Milk
+5.0	-0.3	-5.7	+4.0	+33	+64	+80	+51	+17
52%	40%	50%	73%	68%	69%	71%	67%	57%
SS	DC	CW	EMA	Rib Fat	Rump	RBV %	IMF %	
+2.3	-4.8	+30	+1.1	+3.3	+4.0	-0.8	+0.1	
70%	46%	59%	59%	60%	61%	56%	54%	

**Comments:** A heifer mating option again. Strong calving ease and short gestation with plenty of growth in a moderate frame. Exceptional rib and rump fats in the top 1% for the breed coming through from the Meat Machine bloodline. This is a well-bred bull from a very strong maternal line with grandam and great grandam both breeding stud bulls used at Meadowslea. Have a good look here!

Purchaser:

Price: \$

## Lot: 34 MEADOWSLEA Q432

Birth Date: 12/12/19 ID No: 19134019432

TURIHAUA CRUMBLE Y167

RATANUI LAD 21

RATANUI 06 666

MEADOWSLEA K703

MEADOWSLEA M498

MEADOWSLEA K894



INDEXES	
SR	HD
+\$98	+\$97

### 2021 TRANSTASMAN ANGUS CATTLE EVALUATION EBVS

CED	DTRS	GL	BW	200	400	600	MCW	Milk
+5.9	+0.0	-5.6	+2.9	+27	+52	+64	+67	+13
44%	36%	42%	58%	57%	57%	57%	56%	53%
SS	DC	CW	EMA	Rib Fat	Rump	RBV %	IMF %	
+1.2	-5.6	+21	+3.6	+3.2	+3.2	-0.6	+0.1	
55%	39%	50%	50%	52%	51%	49%	49%	

**Comments:** Born out of season and only just 18 months old. Great figures for heifer mating and will come on a lot yet! Very strong rib and rump EBVs.

Purchaser:

Price: \$

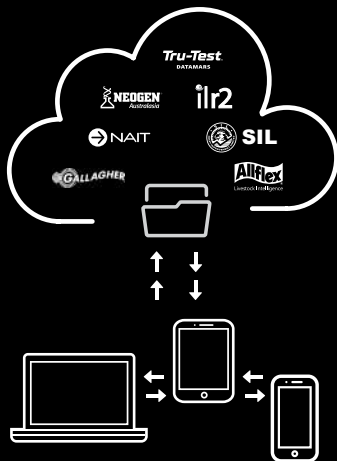


## **Livestock Management Software**

Stockbook livestock management software offers improved profitability through livestock intelligence

## **Stockbook is cloud enabled**

Stockbook and Live Entry enable you to collect and view data on your animals in real-time. With a range of data collection options, Stockbook helps you manage genetic performance, fertility, weight gain and other performance measures so you can identify less productive stock.



Stockbook offers you the livestock intelligence within your operation by turning data into actionable information and insight.

**For more information contact:**

**PBB - Business Solutions**

**on P: 06 323 4484 or E: [stockbook@pbbnz.com](mailto:stockbook@pbbnz.com)**

**[www.pbbnz.com](http://www.pbbnz.com)**



# 2 YEAR OLD ANGUS BULLS

**Lot: 35      MEADOWSLEA Q232**

Birth Date: 15/09/19      ID No: 19134019232

MEADOWSLEA J514

**MEADOWSLEA L226**

MEADOWSLEA H104

VERMONT DRAMBUIE D057<sup>(AI)</sup>(ET) (IMP AUS)

**MEADOWSLEA G834**

MEADOWSLEA B636

INDEXES	
SR	HD
<b>+\$107</b>	<b>+\$113</b>

## 2021 TRANSTASMAN ANGUS CATTLE EVALUATION EBVS

CED	DTRS	GL	BW	200	400	600	MCW	Milk
<b>+4.5</b>	<b>-2.7</b>	<b>-5.5</b>	<b>+3.8</b>	<b>+42</b>	<b>+79</b>	<b>+105</b>	<b>+99</b>	<b>+15</b>
53%	43%	59%	75%	70%	71%	73%	69%	59%

SS	DC	CW	EMA	Rib Fat	Rump	RBV %	IMF %
<b>+2.7</b>	<b>-5.0</b>	<b>+46</b>	<b>+4.4</b>	<b>+0.0</b>	<b>+0.5</b>	<b>+0.1</b>	<b>+0.6</b>
73%	44%	60%	60%	61%	61%	56%	55%

**Comments:** Another good heifer mating option here. Good calving ease and moderate birthweight, followed by very strong growth. Good clean shoulders and a nice top-line. Looks set to develop!

**Purchaser:**

**Price: \$**

# YEARLING ANGUS BULLS

## Lot: 36 MEADOWSLEA R734

Birth Date: 27/09/20 ID No: 19134020734

MEADOWSLEA D227

MEADOWSLEA F540

MEADOWSLEA D042

TURIHAUA CRUMP E5 (ET)

MEADOWSLEA K847

MEADOWSLEA G899

INDEXES	
SR	HD
+\$103	+\$92

### 2021 TRANSTASMAN ANGUS CATTLE EVALUATION EBVS

CED	DTRS	GL	BW	200	400	600	MCW	Milk
+2.4	-1.8	-5.9	+3.5	+33	+67	+86	+91	+20
56%	47%	58%	74%	68%	66%	67%	66%	62%

SS	DC	CW	EMA	Rib Fat	Rump	RBV %	IMF %
+1.7	-9.1	+34	+2.5	+2.0	+2.1	-0.9	+0.7
61%	54%	60%	59%	62%	60%	59%	58%

**Comments:** We start the yearlings with the classic F540 x Crump cross which works so well for us at Meadowslea, and always gives such terrific maternal and fertility traits. R734 has inherited the important traits for heifer mating and has low birthweight with calving ease and very short gestation at -6 days. He has a milk figure in the top 10% for the breed whilst his short days to calving EBV ranks him in the top 1% in NZ. He scanned well, with the second-best IMF% in the group, and his rib and rump fats are in the top 10% in NZ. A lovely, upstanding, well-balanced bull with a terrific top-line, plenty of length, and some scale about him.

Purchaser:

Price: \$

## Lot: 37 MEADOWSLEA R640

Birth Date: 13/09/20 ID No: 19134020640

MEADOWSLEA J514

MEADOWSLEA L226

MEADOWSLEA H104

TE MANIA INFINITY 04 379

MEADOWSLEA G843

MEADOWSLEA 898

INDEXES	
SR	HD
+\$96	+\$100

### 2021 TRANSTASMAN ANGUS CATTLE EVALUATION EBVS

CED	DTRS	GL	BW	200	400	600	MCW	Milk
+4.7	-5.2	-3.8	+2.0	+32	+64	+76	+69	+14
55%	45%	83%	74%	68%	66%	66%	65%	59%

SS	DC	CW	EMA	Rib Fat	Rump	RBV %	IMF %
+2.1	-4.1	+30	+2.0	-0.1	+0.5	-0.6	+1.0
61%	46%	57%	56%	60%	57%	56%	56%

**Comments:** A very deep-bodied and beautifully sound L226 son with a very strong hindquarter. Out of a top-breeding Infinity cow who has bred 2 previous stud bulls both used as yearlings within the stud. G843 herself was sold in our 2021 Female Sale to Wether Hill Angus Stud. R640 has good calving ease, a super low birthweight, and measured with the top scrotal size in the group. He scanned very well with the third best EMA in the group and you can see the exceptional muscle along his loin. Great head, bone and balance - a top pick!

Purchaser:

Price: \$

# YEARLING ANGUS BULLS

## Lot: 38 MEADOWSLEA R771

Birth Date: 30/09/20 ID No: 19134020771

WOODBANK 0113

WOODBANK 7017

WOODBANK 9132

MEADOWSLEA L226

MEADOWSLEA N419

MEADOWSLEA A333

INDEXES	
SR	HD
+\$94	+\$99

### 2021 TRANSTASMAN ANGUS CATTLE EVALUATION EBVS

CED	DTRS	GL	BW	200	400	600	MCW	Milk
+2.1	-5.0	-5.4	+3.8	+37	+69	+96	+89	+13
48%	34%	52%	71%	64%	59%	61%	59%	46%
SS	DC	CW	EMA	Rib Fat	Rump	RBY %	IMF %	
+1.5	-3.9	+40	+2.2	+0.2	+0.8	+0.2	+0.1	
50%	32%	50%	43%	46%	45%	42%	40%	

**Comments:** The first and only son of Woodbank 7017 to be offered in this catalogue - these Woodbank sons are an outstanding line and the balance of them will be a real feature of the 2022 Winter Sale! R771 is well-bred- his dam's first calf Q272 was sold at lot 11 in the 2021 Bull Sale to Grampians Station for \$9,500 after having been used in the stud to follow-up the AI cows. Grandam is also a top breeding old cow. Good calving ease with low birthweight followed by very good growth. A lovely, well-balanced bull, very sound, and should develop into a very good herd sire. Great top-line, beautiful temperament - this is a top pick.

Purchaser:

Price: \$

## Lot: 39 MEADOWSLEA R586

Birth Date: 05/09/20 ID No: 19134020586

STERN 10610

TANGIHAU DINO 17438

TANGIHAU H124

TURIHAUA CRUMP E5 (ET)

MEADOWSLEA J420

MEADOWSLEA B558

INDEXES	
SR	HD
+\$95	+\$102

### 2021 TRANSTASMAN ANGUS CATTLE EVALUATION EBVS

CED	DTRS	GL	BW	200	400	600	MCW	Milk
+4.4	+0.6	-8.5	+2.7	+33	+58	+82	+80	+15
51%	41%	84%	73%	66%	62%	63%	61%	55%
SS	DC	CW	EMA	Rib Fat	Rump	RBY %	IMF %	
+2.4	-6.0	+35	+3.5	+1.4	+1.6	-0.1	+0.6	
54%	39%	55%	51%	56%	53%	54%	51%	

**Comments:** The first of our sons of Tangihau Dino, who was sold for \$45,000 to Oregon Angus and used in our AI programme. R586 is a big, strong, upstanding bull with terrific depth of body and great outlook. Terrific heifer mating figures with good calving ease, low birthweight and short gestation in the top 2% for the breed. He also has the important fertility figures of good scrotal size, short days to calving, and rib fat all in the top 20% in NZ. A very impressive bull.

Purchaser:

Price: \$

MEADOWSLEA  
ANGUS & SHEEP GENETICS

# YEARLING ANGUS BULLS

## Lot: 40 MEADOWSLEA R636

Birth Date: 13/09/20 ID No: 19134020636

RANGATIRA 13-38

MEADOWSLEA M429

MEADOWSLEA G922

TURIHAUA CRUMP E5 (ET)

MEADOWSLEA L062

MEADOWSLEA F562

INDEXES	
SR	HD
+\$120	+\$97

### 2021 TRANSTASMAN ANGUS CATTLE EVALUATION EBVS

CED	DTRS	GL	BW	200	400	600	MCW	Milk
+2.1	+5.2	-5.2	+3.7	+33	+65	+88	+82	+15
52%	38%	83%	73%	66%	63%	64%	62%	51%

SS	DC	CW	EMA	Rib Fat	Rump	RBY %	IMF %
+2.0	-6.5	+33	+4.2	+0.9	+0.8	+1.3	-0.7
57%	40%	54%	52%	56%	54%	53%	51%

**Comments:** A son of M429, who was sold to Red Oak Stud for \$18,000, and out of a cow by Crump that goes back to our great old matriarch cow A300 - the grandam of F540. As one would expect he has good fertility and maternal figures. R636 has a terrific set of numbers for heifer mating, with calving ease, low birthweight, good muscle, and very short days to calving all combining for a very strong SR Index. Plenty of scope and scale about this chap. Potential here!

Purchaser:

Price: \$

## Lot: 41 MEADOWSLEA R620

Birth Date: 11/09/20 ID No: 19134020620

MEADOWSLEA M495

MEADOWSLEA P514

MEADOWSLEA M621

TURIHAUA LOYALTY L44 (ET)

MEADOWSLEA P745

MEADOWSLEA H104

INDEXES	
SR	HD
+\$124	+\$89

### 2021 TRANSTASMAN ANGUS CATTLE EVALUATION EBVS

CED	DTRS	GL	BW	200	400	600	MCW	Milk
+0.2	+0.3	-4.2	+4.2	+38	+71	+89	+77	+14
46%	32%	37%	69%	61%	57%	59%	55%	41%

SS	DC	CW	EMA	Rib Fat	Rump	RBY %	IMF %
+1.9	-5.6	+36	+4.2	+1.1	+1.6	+0.5	-0.3
48%	32%	48%	43%	46%	45%	43%	41%

**Comments:** Another powerfully-built bull here, with plenty of stretch and scope again. A good pedigree with grandam H104 having bred two of our top stud sires - L226 and M452 - who both have very good sons in this sale. Moderate birthweight, plenty of growth, and very strong fats give a very good index. Another bull worthy of a good close look for cows of heifers. Get in behind this chap - he has real width!

Purchaser:

Price: \$

# YEARLING ANGUS BULLS

## Lot: 42 MEADOWSLEA R855

Birth Date: 09/10/20 ID No: 19134020855

MEADOWSLEA J514

**MEADOWSLEA L226**

MEADOWSLEA H104

STERN 0713

**MEADOWSLEA G1003**

MEADOWSLEA D110

INDEXES	
SR	HD
+\$107	+\$93

### 2021 TRANSTASMAN ANGUS CATTLE EVALUATION EBVS

CED	DTRS	GL	BW	200	400	600	MCW	Milk
+1.0	-6.4	-4.1	+4.5	+42	+76	+96	+86	+17
52%	40%	50%	74%	68%	65%	66%	64%	57%
SS	DC	CW	EMA	Rib Fat	Rump	RBV %	IMF %	
+1.5	-6.1	+40	+2.9	+1.0	+1.7	-0.6	+0.8	
58%	42%	56%	54%	57%	56%	54%	53%	

**Comments:** To lead out this next pen we have selected another son of L226 who has been breeding so strongly. Moderate birthweight with strong growth, and he scanned well with the 2nd best EMA of the group. Good fertility as well with strong fats. Real stretch, lovely clean shoulders, great top-line and real balance and outlook. Another top pick!

**Purchaser:**

**Price: \$**

## Lot: 43 MEADOWSLEA R748

Birth Date: 29/09/20 ID No: 19134020748

MEADOWSLEA F540

**MEADOWSLEA M564**

MEADOWSLEA G1000

MEADOWSLEA H217

**MEADOWSLEA K743**

MEADOWSLEA H140

INDEXES	
SR	HD
+\$126	+\$91

### 2021 TRANSTASMAN ANGUS CATTLE EVALUATION EBVS

CED	DTRS	GL	BW	200	400	600	MCW	Milk
+1.3	-2.1	-4.5	+3.4	+39	+72	+89	+71	+17
49%	36%	45%	73%	66%	63%	64%	61%	51%
SS	DC	CW	EMA	Rib Fat	Rump	RBV %	IMF %	
+2.6	-7.7	+42	+4.6	+3.7	+3.6	-1.5	+1.5	
54%	40%	53%	51%	55%	53%	51%	50%	

**Comments:** The first of the M564 sons in this catalogue. M564 is the son of G1000, the record priced cow who passes on her exceptional EMA to all her progeny. As we would expect, R748 scanned very well for EMA with the 4th largest measured in this group, as well as very good IMF percentage. He has also inherited exceptional fertility figures from this bloodline, with short days to calving and rib fat in the top 2% for the breed, ensuring he gets a very good self-replacing index. With a bit more scale he will grow into a big strong bull.

**Purchaser:**

**Price: \$**

# YEARLING ANGUS BULLS

## Lot: 44 MEADOWSLEA R651

Birth Date: 14/09/20 ID No: 19134020651

TURIHAUA CRUMBLE Y167

**TURIHAUA CRUMP E5 (ET)**

TURIHAUA Q263

GLANWORTH WAIGROUP 0816

**MEADOWSLEA H200**

MEADOWSLEA B558

INDEXES	
SR	HD
+\$103	+\$78

### 2021 TRANSTASMAN ANGUS CATTLE EVALUATION EBVS

CED	DTRS	GL	BW	200	400	600	MCW	Milk
+1.3	-0.1	-5.5	+2.6	+24	+50	+65	+67	+12
58%	50%	60%	74%	69%	67%	67%	66%	64%

SS	DC	CW	EMA	Rib Fat	Rump	RBV %	IMF %
+1.0	-8.0	+21	+2.1	+1.9	+1.5	-0.6	+0.1
62%	55%	62%	61%	64%	62%	63%	61%

**Comments:** Here is a son of old Crump himself and going back to Glanworth 16. Great old bloodlines here, and very suitable for heifer mating with very low birthweight and short gestation. Clean shoulders, with plenty of size and scale and that good top-line we always get from Crump.

**Purchaser:**

**Price: \$**

## Lot: 45 MEADOWSLEA R580

Birth Date: 03/09/20 ID No: 19134020580

TAIMATE LAZARUS L12

**MEADOWSLEA P556**

MEADOWSLEA F530

TURIROA 14830 (ET)

**MEADOWSLEA P650**

MEADOWSLEA K791

INDEXES	
SR	HD
+\$105	+\$78

### 2021 TRANSTASMAN ANGUS CATTLE EVALUATION EBVS

CED	DTRS	GL	BW	200	400	600	MCW	Milk
-3.4	-3.8	-4.4	+6.8	+42	+78	+105	+101	+11
48%	34%	50%	70%	62%	58%	60%	56%	44%

SS	DC	CW	EMA	Rib Fat	Rump	RBV %	IMF %
+2.7	-5.4	+43	+3.1	+1.4	+2.3	-0.5	+1.1
48%	32%	49%	44%	47%	46%	43%	42%

**Comments:** . A grandson of Lazarus here with some length and scale about him. Strong fertility traits and easy doing fats with a good top line. He has plenty of size making him most suitable for adult cows.

**Purchaser:**

**Price: \$**

# YEARLING ANGUS BULLS

## Lot: 46 MEADOWSLEA R728

Birth Date: 27/09/20 ID No: 19134020728

MEADOWSLEA F540

**MEADOWSLEA M564**

MEADOWSLEA G1000

TURIHAUA CRUMP E5 (ET)

**MEADOWSLEA M623**

MEADOWSLEA J494

INDEXES	
SR	HD
+\$111	+\$84

### 2021 TRANSTASMAN ANGUS CATTLE EVALUATION EBVS

CED	DTRS	GL	BW	200	400	600	MCW	Milk
-1.1	-3.0	-4.4	+4.6	+38	+74	+98	+96	+17
50%	39%	49%	73%	66%	63%	64%	61%	52%

SS	DC	CW	EMA	Rib Fat	Rump	RBV %	IMF %
+2.5	-8.4	+44	+5.1	+2.6	+2.4	-0.8	+1.0
56%	42%	54%	53%	56%	54%	53%	52%

**Comments:** Another M564, this time out of a cow by Crump. As always with the M564 sons he scanned very well for EMA. He has industry-leading fertility traits with those rib and rump fats in the top 2% of the breed as well. Good fertility traits once again. Plenty of scale about him and real potential here.

**Purchaser:**

**Price: \$**

## Lot: 47 MEADOWSLEA R653

Birth Date: 14/09/20 ID No: 19134020653

MEADOWSLEA L202

**MEADOWSLEA P532**

MEADOWSLEA E310

RANGATIRA 13-38

**MEADOWSLEA P540**

MEADOWSLEA J430

INDEXES	
SR	HD
+\$116	+\$97

### 2021 TRANSTASMAN ANGUS CATTLE EVALUATION EBVS

CED	DTRS	GL	BW	200	400	600	MCW	Milk
+2.5	+5.1	-5.4	+4.2	+32	+66	+88	+75	+13
46%	30%	59%	69%	61%	57%	59%	57%	41%

SS	DC	CW	EMA	Rib Fat	Rump	RBV %	IMF %
+1.9	-5.3	+35	+2.0	+1.0	+1.7	+0.1	+0.5
48%	31%	48%	42%	45%	45%	41%	40%

**Comments:** Here is a well-bred bull. Out of a daughter of the \$100,000 Rangatira bull 13-38, and with a grandam who bred 3 top sale bulls and a stud bull as well. Good calving ease here with short gestation and moderate birth weight for heifer mating. A nice top-line with a good hindquarter.

**Purchaser:**

**Price: \$**



The award-winning **yourbid** online selling platform was developed by the Giddings Family for their 2020 Angus Female Sale which was held during the first Covid Lockdown.

The system was further developed to incorporate on-farm and online bidding, and has been used successfully for 9 further sales at Meadowslea.

It has also been used to run a number of sheep and cattle sales for other studs both in NZ and the UK.

For all enquiries to used **yourbid** please contact **[george@yourbid.org](mailto:george@yourbid.org)**





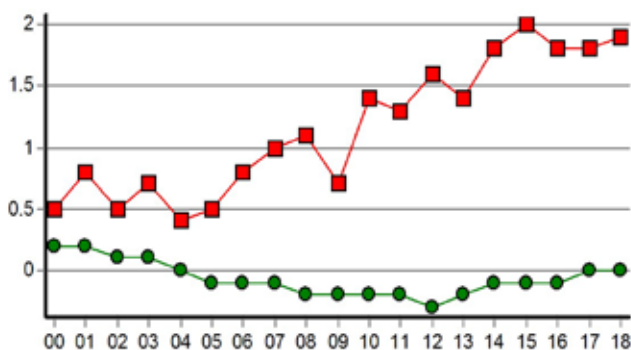
## The development of the “Meadowslea Hill Country Type”

has been the result of 25 years of selecting animals that perform the best in our hash hill country environment. Cows that can winter easily on the hill without supplements, stay in good order, calve easily and get back in calf early every year for 10 years has been the focus of our breeding programme.

Ultra-sound scanning has confirmed to us that these easy doing cattle have higher levels of Rib and Rump fat. Science has now recognised that these higher fat levels result in heifers getting in calf earlier with higher conception rates. These higher fat levels also result in increased fertility in the whole herd with earlier rebreeding and less dry cows.

**These great positive fat EBV's in the Meadowslea herd have come about simply by selecting animals that suit the Hill Country environment.**

Carcase Rib Fat (mm)



- Meadowslea herd
- Australasian herd average

Graph showing improvement in fat EBVs at Meadowslea while running the herd on hill country, compared with Australasian average. From TransTasman Angus Cattle Evaluation.

The average rib fat EBV of the bulls in this catalogue is +2.1 ranking in the top 10% for the breed in Australasia.

# Meadowslea Proven Herd Sires



## Meadowslea F540

Trait leader for Short Gestation, Milk, and Short Days to Calving. He ranks in the top 15% of the breed for all the fertility and maternal traits measurable. He was ranked 3rd for Short Gestation in the BLNZ Dairy Beef Progeny Test in 2018. His progeny also performed very strongly in the BLNZ Beef Progeny Test cohort 2 – for both growth and carcass traits.



## Turihaua Crump E5

Trait Leader for Short Days to calving. 12 years old and still going strong. Over 350 calves to date at Meadowslea. His young daughters are the top breeding cows in the herd and proving to be exceptionally fertile and early maturing - resulting in his Days to Calving figure going down to minus 10 days.

## **- Breed Trait Leaders for Maternal and Fertility Traits**



### **Meadowslea Meat Machine G914**

The Bull we call the “Meat Machine” – Exceptional thickness and fertility traits. He is a Trait leader for Calving Ease, his Low Birth Weight figures are in the top 5% for the breed and his Rib and Rump Fats are off the scale. His sons are full of meat, exceptionally easy doing and very suitable for heifer mating in the harder hill country. We can't get enough of this bloodline and he now ranks in the top 15% for Self Replacing Index as well.



### **Meadowslea K703**

A son of Meat Machine who has wonderful maternal and fertility traits and ranks in the top 10% of the breed for almost all those key traits responsible for profitability in the hill country in a self-replacing herd. His short days to calving and Rib and Rump fats are off the scale and all this combines to place him in the top 15% of the breed for the Self Replacing Index . His progeny are deep, thick, early maturing and full of muscle.

# A Brand New Initiative using our original Brand Mark



Over 10,000 Meadowslea sired calves are born each year. Most are in the hill country under sustainable grass fed systems.

Clients are successfully using Meadowslea brand-marked ear tags as a step towards progeny identification. The personalized tags allow clients to identify genetics and follow performance from herd to marketplace

## A Great Opportunity for our clients

**Meadowslea offers to supply brand-marked ear tags, printed with the Client's property name, free of charge to clients, to tag all their calves.**

The tags can be linked to NAIT EID tags for further traceability.

DNA records are available for all Meadowslea sires, which will allow sire verification of progeny and traceability.

The brand-marked tags will enable Feedback of performance both in the client's herd, and the Marketplace. Easy Sale yard recognition will also lead into profitable supply to top end markets currently under development.

To take up this opportunity, meet with the Allflex rep at our Spring Bull Sale on Friday Oct 9th at 1pm and place your order there.

Be part of our Paddock to Pan Story which leverages off our sustainable genetics, which are bred in the hill country without the use of supplements or nutrient leeching fertilizer.

Our beef has a taste of its own.

This is also Your story waiting to be told.



*The*

• FAIRLIE BAKEHOUSE •

*South Canterbury*

*Meadowslea proudly supplies*

**FAIRLIE BAKEHOUSE**

*With the finest Angus beef*

*Come and taste these  
fantastic pies at our*

**BULL SALE  
FRIDAY 8th  
OCTOBER**





**WE ARE A BUSINESS BUILT ON THE BELIEF  
THAT PEOPLE COME FIRST**

## **South Canterbury**

**Andrew Scott • 022 184 3204**

**Dean Cox • 027 561 5007**

**Don Borlase • 027 561 4025**

**Greg Shearer • 027 476 6769**

**Hamish Zuppichich • 027 403 3025**

**Keegan Gray • 027 462 0134**

**Madison Taylor • 021 656 851**

**Peter Heinz • 027 208 2932**

**Peter Walsh • 027 561 4087**

**Snow Buckley • 027 561 4652**

**Tom Gatrell • 027 462 0028**

**Wayne Andrews • 027 484 8232**

**[www.hazlett.nz](http://www.hazlett.nz)**

**03 687 4440 • [officetimaru@hazlett.nz](mailto:officetimaru@hazlett.nz)**

# YEARLING ANGUS BULLS

## Lot: 48 MEADOWSLEA R762

Birth Date: 30/09/20 ID No: 19134020762

MEADOWSLEA F540

MEADOWSLEA M564

MEADOWSLEA G1000

TURIHAUA CRUMP E5 (ET)

MEADOWSLEA J629

MEADOWSLEA A307

### INDEXES

SR	HD
----	----

+\$113	+\$85
--------	-------

### 2021 TRANSTASMAN ANGUS CATTLE EVALUATION EBVS

CED	DTRS	GL	BW	200	400	600	MCW	Milk
+1.0	-2.8	-3.4	+3.1	+32	+66	+82	+80	+15
51%	40%	51%	73%	67%	64%	65%	62%	54%
SS	DC	CW	EMA	Rib Fat	Rump	RBY %	IMF %	
+1.9	-8.0	+35	+4.1	+2.9	+2.9	-1.4	+1.3	
57%	43%	55%	53%	57%	55%	54%	53%	

**Comments:** To lead out this pen we have selected an M564 son out of a Crump cow. These M564 sons consistently scan with a big EMA and R762 was again near the top of the group. He has calving ease, moderate birthweight, and plenty of growth. His short days to calving and both rib and rump fat are industry leading. Plenty of length and scope about this chap, good top-line, and some balance about him.

Purchaser:

Price: \$

## Lot: 49 MEADOWSLEA R937

Birth Date: 28/10/20 ID No: 19134020937

MEADOWSLEA F540

MEADOWSLEA M564

MEADOWSLEA G1000

MEADOWSLEA H119

MEADOWSLEA K791

MEADOWSLEA G843

### INDEXES

SR	HD
----	----

+\$119	+\$103
--------	--------

### 2021 TRANSTASMAN ANGUS CATTLE EVALUATION EBVS

CED	DTRS	GL	BW	200	400	600	MCW	Milk
+4.4	-0.9	-4.9	+2.0	+35	+70	+85	+72	+17
50%	39%	49%	73%	67%	64%	65%	62%	52%
SS	DC	CW	EMA	Rib Fat	Rump	RBY %	IMF %	
+2.9	-6.4	+40	+5.3	+3.0	+2.8	-1.1	+1.5	
57%	41%	54%	52%	55%	54%	52%	51%	

**Comments:** Similarly bred, M564 out of a Crump grand-daughter this time. Again scanned with a big EMA. Super figures for heifer mating with very small birthweight, terrific fertility traits with short days to calving, scrotal size, and rib and rump fats all in the top 10% for the breed, together generating a good SR index. This is the heaviest bull on offer and he has a great top-line and plenty of scope to grow with length and stretch. A good pick.

Purchaser:

Price: \$



# YEARLING ANGUS BULLS

## Lot: 50 MEADOWSLEA R850

Birth Date: 08/10/20 ID No: 19134020850

MEADOWSLEA F540

**MEADOWSLEA M564**

MEADOWSLEA G1000

MEADOWSLEA L173

**MEADOWSLEA N309**

MEADOWSLEA L152

INDEXES	
SR	HD
+\$119	+\$74

### 2021 TRANSTASMAN ANGUS CATTLE EVALUATION EBVS

CED	DTRS	GL	BW	200	400	600	MCW	Milk
-3.1	-6.4	-3.7	+5.2	+40	+79	+98	+86	+17
50%	37%	48%	73%	66%	63%	63%	62%	49%
SS	DC	CW	EMA	Rib Fat	Rump	RBY %	IMF %	
+2.9	-7.8	+45	+4.6	+3.5	+3.9	-1.6	+1.5	
54%	39%	53%	51%	55%	53%	51%	50%	

**Comments:** These M564 sons are so consistent, all scanning strongly for EMA and with exceptional fertility traits. R850 has a bit of a bigger birth weight but with plenty of growth. Very strong in the fertility traits with the important scrotal size and short days to calving in the top 5% of NZ. He has those exceptional easy-doing fats we like in the hill country with real width across the loin and the good hindquarter all the M564 sons display.

Purchaser:

Price: \$

## Lot: 51 MEADOWSLEA R671

Birth Date: 18/09/20 ID No: 19134020671

RANGATIRA 13-38

**MEADOWSLEA M452**

MEADOWSLEA H104

KAHARAU 07-558

**MEADOWSLEA H229**

MEADOWSLEA 160

INDEXES	
SR	HD
+\$71	+\$82

### 2021 TRANSTASMAN ANGUS CATTLE EVALUATION EBVS

CED	DTRS	GL	BW	200	400	600	MCW	Milk
-0.4	+0.1	-3.2	+5.2	+31	+61	+87	+90	+14
50%	36%	50%	73%	66%	64%	64%	61%	52%
SS	DC	CW	EMA	Rib Fat	Rump	RBY %	IMF %	
+1.2	-3.2	+27	+1.6	+0.9	+1.2	+0.4	-0.4	
54%	41%	54%	50%	53%	52%	49%	49%	

**Comments:** Strong bone and very good head on this M452 son. He is a grandson of the \$100,000 Rangatira bull and displays the same powerful attributes. This is a bull that will develop into a powerful adult sire. Depth, thickness, a great-topline, and ideal for mating adult cows.

Purchaser:

Price: \$



# YEARLING ANGUS BULLS

## Lot: 52 MEADOWSLEA R635

Birth Date: 13/09/20 ID No: 19134020635

STERN 10610

TANGIHAU DINO 17438

TANGIHAU H124

KAHARAU 07-558

MEADOWSLEA G1026

MEADOWSLEA D174

INDEXES	
SR	HD
+\$87	+\$94

### 2021 TRANSTASMAN ANGUS CATTLE EVALUATION EBVS

CED	DTRS	GL	BW	200	400	600	MCW	Milk
+4.3	-0.2	-3.2	+2.2	+26	+48	+64	+55	+15
50%	39%	83%	73%	66%	62%	62%	61%	54%

SS	DC	CW	EMA	Rib Fat	Rump	RBV %	IMF %
+1.8	-3.7	+28	+5.7	+1.9	+2.4	+0.2	-0.2
53%	36%	54%	49%	54%	52%	51%	49%

**Comments:** Here is the second of two impressive sons of the \$45,000 Tangihau Dino in the catalogue. Out of a good old 10-year-old cow sold in this year's Female Sale to Wether Hill Angus. Terrific heifer mating option with calving ease and very low birth weight. He scanned with the second best EMA in the group and good fats as well. Depth and thickness about this chap, great topline, very clean shoulders, and great outlook.

Purchaser:

Price: \$

## Lot: 53 MEADOWSLEA R774

Birth Date: 01/10/20 ID No: 19134020774

MEADOWSLEA F540

MEADOWSLEA M564

MEADOWSLEA G1000

MEADOWSLEA J479

MEADOWSLEA N411

MEADOWSLEA 159

INDEXES	
SR	HD
+\$114	+\$79

### 2021 TRANSTASMAN ANGUS CATTLE EVALUATION EBVS

CED	DTRS	GL	BW	200	400	600	MCW	Milk
-1.6	-4.1	-3.2	+4.1	+36	+72	+89	+85	+13
50%	38%	48%	73%	67%	64%	65%	62%	51%

SS	DC	CW	EMA	Rib Fat	Rump	RBV %	IMF %
+2.6	-5.9	+43	+4.1	+2.5	+2.6	-0.7	+1.1
57%	41%	54%	52%	55%	54%	51%	51%

**Comments:** An M564 son, once again scanning with an exceptional EMA and going back to the record price cow G1000. He has a great pedigree being out of a cow by K703, so he has a double-up of muscle genes and fertility traits, with plenty of depth and thickness, strong hindquarter, good clean shoulders and nice top-line. A quality bull who is worth a close look.

Purchaser:

Price: \$

# YEARLING ANGUS BULLS

## Lot: 54 MEADOWSLEA R829

Birth Date: 06/10/20 ID No: 19134020829

TURIHAUA CRUMP E5 (ET)

**MEADOWSLEA N166**

MEADOWSLEA G922

MEADOWSLEA G804

**MEADOWSLEA J430**

MEADOWSLEA G996

INDEXES	
SR	HD
+\$120	+\$82

### 2021 TRANSTASMAN ANGUS CATTLE EVALUATION EBVS

CED	DTRS	GL	BW	200	400	600	MCW	Milk
-0.2	+2.9	-3.6	+3.6	+32	+64	+87	+81	+13
50%	38%	46%	73%	66%	63%	64%	61%	51%

SS	DC	CW	EMA	Rib Fat	Rump	RBV %	IMF %
+1.8	-8.1	+35	+1.8	+1.9	+1.8	+0.0	-0.7
54%	40%	54%	49%	53%	51%	50%	48%

**Comments:** To lead off this next pen we have the first of the N166 sons in this catalogue. R829 is a standout bull. His dam is a top performer with three previous top sale bulls and a retained stud keeper. Moderate birthweight, and exceptional short days to calving in the top 1% for the breed indicates good fertility. He has very strong fats and a moderate frame generating a good SR index. The N166 sons are an outstanding line this year, and this fellow shows all the depth, thickness, and strength they display. He has the great coat and very good hindquarter from the Crump bloodline. Top pick!

**Purchaser:**

**Price: \$**

## Lot: 55 MEADOWSLEA R865

Birth Date: 12/10/20 ID No: 19134020865

MACKENZIE OF STERN

**STERN 18711**

STERN L307

MEADOWSLEA L202

**MEADOWSLEA P519**

MEADOWSLEA F704

INDEXES	
SR	HD
+\$132	+\$112

### 2021 TRANSTASMAN ANGUS CATTLE EVALUATION EBVS

CED	DTRS	GL	BW	200	400	600	MCW	Milk
+4.8	+3.7	-6.6	+3.9	+38	+78	+98	+84	+14
47%	33%	56%	69%	61%	57%	58%	57%	42%

SS	DC	CW	EMA	Rib Fat	Rump	RBV %	IMF %
+2.1	-5.2	+49	+5.1	+0.9	+2.0	+0.1	+0.8
46%	30%	48%	41%	45%	44%	41%	39%

**Comments:** The sire of this chap, Stern 711, was purchased as a yearling in 2019 as an outcross bloodline to breed heifer-mating bulls. His first son to be offered certainly has a terrific set of data with good calving ease, very short gestation, and moderate birth weight followed by very good growth. He scanned with an excellent EMA which together with his fertility traits have given a SR Index in the top 10% for the breed. He has a good top to him with a strong hindquarter. Worth close inspection.

**Purchaser:**

**Price: \$**

# Carrfields

## Livestock

### We have your stud stock needs covered

Carrfields Livestock has a nationwide network of over 130 livestock agents, stud stock and dairy herd specialists.

**Callum Dunnnett** - *Genetics Representative* 027 587 0131

**Tom Suttor** - *Genetics Representative* 027 616 4504

**Andrew Holt** - *Regional Livestock Manager* 027 496 3311

**Neville Clark** - *Auctioneer* 027 598 6537

Phone 0800 223 070  
[www.carrfieldslivestock.co.nz](http://www.carrfieldslivestock.co.nz)

# YEARLING ANGUS BULLS

## Lot: 56 MEADOWSLEA R688

Birth Date: 21/09/20 ID No: 19134020688

MEADOWSLEA K904

**MEADOWSLEA N119**

MEADOWSLEA E350

MEADOWSLEA F540

**MEADOWSLEA K836**

MEADOWSLEA F801

### INDEXES

SR HD

+\$121 +\$92

### 2021 TRANSTASMAN ANGUS CATTLE EVALUATION EBVS

CED	DTRS	GL	BW	200	400	600	MCW	Milk
+3.4	+0.8	-6.0	+3.5	+30	+61	+71	+72	+15
49%	35%	54%	72%	65%	62%	63%	60%	51%

SS	DC	CW	EMA	Rib Fat	Rump	RBY %	IMF %
+2.6	-7.5	+29	+2.7	+2.7	+3.2	-0.4	+0.7
53%	39%	53%	49%	53%	51%	49%	48%

**Comments:** A very well-balanced bull here by N119, out of a cow by F540 who has previously bred a stud bull sold to Okaka Angus at \$15,000. Maternal Grandam is F801 who bred a \$22,000 son to Umbrella Range Angus, and she was herself sold to Australia for \$5,500. R688 has strong maternal and fertility traits as you'd expect, with calving ease, very short gestation, and moderate birthweight. His short days to calving, rib fat, and rump fat are in the top 2% for the breed and he also scanned with very high IMF%. A nicely balanced bull with a good outlook and a strong SR index.

Purchaser:

Price: \$

## Lot: 57 MEADOWSLEA R822

Birth Date: 06/10/20 ID No: 19134020822

MEADOWSLEA D227

**MEADOWSLEA F540**

MEADOWSLEA D042

GLANWORTH WAIGROUP 0816

**MEADOWSLEA G888**

MEADOWSLEA D239

### INDEXES

SR HD

+\$114 +\$100

### 2021 TRANSTASMAN ANGUS CATTLE EVALUATION EBVS

CED	DTRS	GL	BW	200	400	600	MCW	Milk
+5.3	+2.3	-6.1	+1.9	+29	+65	+77	+66	+22
57%	47%	59%	74%	69%	67%	67%	67%	64%

SS	DC	CW	EMA	Rib Fat	Rump	RBY %	IMF %
+1.9	-8.2	+36	+2.1	+2.5	+2.6	-1.1	+0.7
62%	55%	60%	59%	62%	61%	60%	59%

**Comments:** Here is an F540 son out of an old Glanworth 0816 cow with super data for mating heifers. Exceptional low birth weight with calving ease and very short gestation. Strong fertility traits: short days to calving, top rib and rump fats, and a good SR index. Upstanding bull once again.

Purchaser:

Price: \$

# YEARLING ANGUS BULLS

## Lot: 58 MEADOWSLEA R744

Birth Date: 28/09/20 ID No: 19134020744

MEADOWSLEA M495

**MEADOWSLEA P514**

MEADOWSLEA M621

MEADOWSLEA M452

**MEADOWSLEA P686**

MEADOWSLEA M1042

INDEXES	
SR	HD
+\$90	+\$65

### 2021 TRANSTASMAN ANGUS CATTLE EVALUATION EBVS

CED	DTRS	GL	BW	200	400	600	MCW	Milk
-5.1	-4.1	-3.5	+7.5	+39	+72	+97	+102	+11
45%	28%	35%	69%	61%	57%	59%	55%	37%
SS	DC	CW	EMA	Rib Fat	Rump	RBV %	IMF %	
+1.7	-4.8	+36	+2.1	+1.9	+2.3	+0.0	-0.2	
45%	29%	47%	40%	44%	43%	40%	38%	

**Comments:** A big strong bull here, with a bigger birthweight most suitable for adult cows. Plenty of growth, strong fats, scale, and outlook about him.

**Purchaser:**

**Price: \$**

## Lot: 59 MEADOWSLEA R797

Birth Date: 04/10/20 ID No: 19134020797

MANGAPAPA 443

**RATANUI NUGGET 605**

RATANUI 390 (RP)

GOLDWYN 017

**MEADOWSLEA N168**

MEADOWSLEA E292

INDEXES	
SR	HD
+\$95	+\$64

### 2021 TRANSTASMAN ANGUS CATTLE EVALUATION EBVS

CED	DTRS	GL	BW	200	400	600	MCW	Milk
-3.9	-3.0	-2.2	+3.5	+30	+59	+80	+82	+9
46%	33%	41%	70%	63%	59%	60%	58%	46%
SS	DC	CW	EMA	Rib Fat	Rump	RBV %	IMF %	
+1.9	-5.2	+30	+2.5	+1.3	+2.5	-0.5	+0.4	
51%	32%	50%	46%	49%	48%	45%	44%	

**Comments:** A son of Ratanui Nugget with moderate birthweight, clean shoulders, nice balance and depth. Real easy doing type with those strong rib and rump fats we need in the hill country.

**Purchaser:**

**Price: \$**

# YEARLING ANGUS BULLS

## Lot: 60 MEADOWSLEA R837

Birth Date: 07/10/20 ID No: 19134020837

MEADOWSLEA L252

MEADOWSLEA P915

MEADOWSLEA K867

TURIHAUA LOYALTY L44 (ET)

MEADOWSLEA P750

MEADOWSLEA L248

### INDEXES

SR

HD

+\$107

+\$97

### 2021 TRANSTASMAN ANGUS CATTLE EVALUATION EBVS

CED	DTRS	GL	BW	200	400	600	MCW	Milk
+2.6	+0.4	-5.0	+4.0	+36	+68	+88	+76	+17
45%	31%	37%	68%	60%	56%	57%	54%	41%
SS	DC	CW	EMA	Rib Fat	Rump	RBV %	IMF %	
+2.2	-5.5	+38	+3.6	+1.6	+2.1	-0.1	+0.2	
46%	31%	47%	42%	46%	45%	42%	41%	

**Comments:** A solid, strong bull here out of a cow by Loyalty. Moderate birthweight with calving ease and good scrotal size make him very suitable for heifers. Plenty of strength and bone, good width across the top with a strong hindquarter.

Purchaser:

Price: \$

## Lot: 61 MEADOWSLEA R599

Birth Date: 08/09/20 ID No: 19134020599

MEADOWSLEA L226

MEADOWSLEA P700

MEADOWSLEA H117

MEADOWSLEA L106

MEADOWSLEA P863

MEADOWSLEA K708

### INDEXES

SR

HD

+\$126

+\$106

### 2021 TRANSTASMAN ANGUS CATTLE EVALUATION EBVS

CED	DTRS	GL	BW	200	400	600	MCW	Milk
+5.4	+0.2	-5.2	+2.9	+35	+69	+88	+68	+16
45%	29%	35%	70%	62%	58%	59%	56%	41%
SS	DC	CW	EMA	Rib Fat	Rump	RBV %	IMF %	
+2.9	-7.2	+36	+1.4	+2.9	+3.5	-1.2	+0.8	
46%	32%	48%	42%	46%	45%	41%	40%	

**Comments:** A deep-bodied bull here by P700, who was retained in 2020 as a specialist heifer mating sire. R599 has lovely heifer mating figures with strong calving ease, short gestation, and low birthweight. A good pedigree - out of a 2-year heifer with the grandam having produced lot 1 in our 2021 bull sale. He scanned exceptionally well with the very top IMF% and fats of the entire group, giving him a very strong SR index.

Purchaser:

Price: \$

# YEARLING ANGUS BULLS

## Lot: 62 MEADOWSLEA R869

Birth Date: 12/10/20 ID No: 19134020869

TURIROA RAMBLE 11541 (ET)

**TURIROA 14830 (ET)**

TURIROA TULIP 459

KAYJAY FREEDOM I36

**MEADOWSLEA M667**

MEADOWSLEA G828

### INDEXES

SR

HD

+\$104

+\$68

### 2021 TRANSTASMAN ANGUS CATTLE EVALUATION EBVS

CED	DTRS	GL	BW	200	400	600	MCW	Milk
-5.0	-1.4	-4.5	+6.0	+37	+70	+93	+90	+12
50%	36%	44%	73%	66%	64%	64%	62%	52%
SS	DC	CW	EMA	Rib Fat	Rump	RBY %	IMF %	
+1.5	-4.6	+40	+2.6	+0.3	+1.4	+0.8	-0.4	
54%	35%	54%	50%	53%	52%	49%	49%	

**Comments:** Lovely clean-shouldered, well-balanced son of Turiroa 14830. Nice top-line, good hindquarter, and an upstanding bull who is suited to mating adult cows.

Purchaser:

Price: \$

## Lot: 63 MEADOWSLEA R720 (P)

Birth Date: 25/09/20 ID No: 19134020720

GLANWORTH WAIGROUP 0816

**MEADOWSLEA MEAT MACHINE G914**

MEADOWSLEA D101

KAHARAU 07-558

**MEADOWSLEA H172 (P)**

MEADOWSLEA 116 (P)

### INDEXES

SR

HD

+\$116

+\$94

### 2021 TRANSTASMAN ANGUS CATTLE EVALUATION EBVS

CED	DTRS	GL	BW	200	400	600	MCW	Milk
+4.9	+1.2	-4.3	+3.6	+26	+54	+67	+58	+12
53%	42%	49%	74%	68%	66%	67%	65%	61%
SS	DC	CW	EMA	Rib Fat	Rump	RBY %	IMF %	
+1.3	-5.6	+23	+2.8	+3.1	+3.5	+0.1	-1.1	
59%	51%	58%	56%	59%	57%	56%	55%	

**Comments:** Here is a very good son of old Meat Machine himself to lead out this 2nd mob of bulls. As we would expect from this bloodline R720 has good calving ease and low birthweight along with very strong fats that rank him in the top 1% for the breed, and ensure he gets a good self-replacing index. He scanned with a good EMA and has a strong hindquarter. Great length and top-line, clean shoulders, and we think he is definitely one to watch!

Purchaser:

Price: \$

MEADOWSLEA  
ANGUS & SHEEP GENETICS

53

# YEARLING ANGUS BULLS

## Lot: 64 MEADOWSLEA R776

Birth Date: 02/10/20 ID No: 19134020776

MEADOWSLEA F540

**MEADOWSLEA M564**

MEADOWSLEA G1000

RED OAK 378

**MEADOWSLEA L057**

MEADOWSLEA C808

INDEXES	
SR	HD
+\$100	+\$82

### 2021 TRANSTASMAN ANGUS CATTLE EVALUATION EBVS

CED	DTRS	GL	BW	200	400	600	MCW	Milk
<b>+0.5</b>	<b>-0.3</b>	<b>-3.9</b>	<b>+3.6</b>	<b>+32</b>	<b>+67</b>	<b>+81</b>	<b>+73</b>	<b>+16</b>
49%	37%	46%	73%	66%	63%	63%	61%	52%

SS	DC	CW	EMA	Rib Fat	Rump	RBY %	IMF %
<b>+1.7</b>	<b>-5.2</b>	<b>+34</b>	<b>+3.4</b>	<b>+2.9</b>	<b>+2.9</b>	<b>-1.1</b>	<b>+1.1</b>
56%	40%	53%	51%	55%	53%	51%	50%

**Comments:** Another of these M564 sons that perform so well. Low birthweight, plenty of growth, strong fats, good top-line and clean shoulders. He has some length and scope about him and is very good pick for heifer mating.

**Purchaser:**

**Price: \$**

## Lot: 65 MEADOWSLEA R918

Birth Date: 27/10/20 ID No: 19134020918

TE MANIA INFINITY 04 379

**GOLDWYN 017**

GOLDWYN 05-595

GLANWORTH WAIGROUP 0816

**MEADOWSLEA G911**

MEADOWSLEA D258

INDEXES	
SR	HD
+\$100	+\$97

### 2021 TRANSTASMAN ANGUS CATTLE EVALUATION EBVS

CED	DTRS	GL	BW	200	400	600	MCW	Milk
<b>+3.2</b>	<b>+2.0</b>	<b>-4.8</b>	<b>+2.1</b>	<b>+31</b>	<b>+64</b>	<b>+86</b>	<b>+84</b>	<b>+16</b>
56%	48%	59%	74%	69%	66%	66%	66%	63%

SS	DC	CW	EMA	Rib Fat	Rump	RBY %	IMF %
<b>+1.9</b>	<b>-6.8</b>	<b>+35</b>	<b>+0.1</b>	<b>+1.6</b>	<b>+2.1</b>	<b>-1.3</b>	<b>+1.5</b>
61%	52%	59%	58%	62%	60%	59%	58%

**Comments:** A powerful bull here by old Goldwyn 017 and out of a 10-year-old cow by Glanworth 08-16, who bred our record-breaking cows sold in 2021. Exceptional low birthweight with good calving ease figures. Strong in the fertility traits as well with short days to calving, and good rib fat in the top 10% for the breed. Strong head and bone, great depth of body. Good bull.

**Purchaser:**

**Price: \$**



# YEARLING ANGUS BULLS

## Lot: 66 MEADOWSLEA R701

Birth Date: 22/09/20 ID No: 19134020701

MEADOWSLEA L202

**MEADOWSLEA P532**

MEADOWSLEA E310

MEADOWSLEA L252

**MEADOWSLEA P541**

MEADOWSLEA H107

INDEXES	
SR	HD
+\$111	+\$102

### 2021 TRANSTASMAN ANGUS CATTLE EVALUATION EBVS

CED	DTRS	GL	BW	200	400	600	MCW	Milk
+3.4	+1.2	-6.3	+4.0	+33	+72	+94	+92	+16
40%	27%	59%	58%	59%	56%	57%	54%	39%
SS	DC	CW	EMA	Rib Fat	Rump	RBV %	IMF %	
+2.1	-6.2	+40	+3.2	+1.9	+2.7	-0.5	+1.1	
46%	31%	47%	40%	44%	43%	40%	38%	

**Comments:** An upstanding clean-shouldered bull here with good calving ease, moderate birthweight, and very short gestation. A good maternal line behind him with grandam H107 one of the top performing F540 cows in the herd. R701 offers a very good option for heifer mating as well as adult cows.

**Purchaser:**

**Price: \$**

## Lot: 67 MEADOWSLEA R742

Birth Date: 28/09/20 ID No: 19134020742

TURIROA RAMBLE 11541 (ET)

**TURIROA 14830 (ET)**

TURIROA TULIP 459

MEADOWSLEA K890

**MEADOWSLEA N110**

MEADOWSLEA H118

INDEXES	
SR	HD
+\$91	+\$74

### 2021 TRANSTASMAN ANGUS CATTLE EVALUATION EBVS

CED	DTRS	GL	BW	200	400	600	MCW	Milk
-4.8	-2.2	-5.9	+6.6	+41	+78	+106	+111	+15
50%	36%	54%	72%	66%	63%	63%	61%	49%
SS	DC	CW	EMA	Rib Fat	Rump	RBV %	IMF %	
+1.8	-5.0	+48	+3.1	+0.5	+1.3	+0.3	+0.6	
53%	35%	53%	49%	52%	51%	48%	48%	

**Comments:** A powerfully built, solid bull here by Turiroa 14830. Strong growth with a good hindquarter and great depth of body. A top pick suitable for mating adult cows.

**Purchaser:**

**Price: \$**

# YEARLING ANGUS BULLS

## Lot: 68 MEADOWSLEA R943

Birth Date: 01/11/20 ID No: 19134020943

TE MANIA INFINITY 04 379

**GOLDWYN 017**

GOLDWYN 05-595

TURIHAUA CRUMP E5 (ET)

**MEADOWSLEA M674**

MEADOWSLEA D168

INDEXES	
SR	HD
<b>+\$105</b>	<b>+\$74</b>

### 2021 TRANSTASMAN ANGUS CATTLE EVALUATION EBVS

CED	DTRS	GL	BW	200	400	600	MCW	Milk
<b>-3.0</b>	<b>-3.9</b>	<b>-4.5</b>	<b>+4.4</b>	<b>+35</b>	<b>+67</b>	<b>+94</b>	<b>+91</b>	<b>+14</b>
53%	48%	57%	65%	65%	63%	65%	64%	61%

SS	DC	CW	EMA	Rib Fat	Rump	RBY %	IMF %
<b>+1.9</b>	<b>-8.5</b>	<b>+32</b>	<b>-0.7</b>	<b>+0.9</b>	<b>+1.8</b>	<b>-1.3</b>	<b>+1.7</b>
60%	52%	59%	58%	62%	59%	59%	58%

**Comments:** A Goldwyn 17 son here out of another of these very good Crump cows that breed so consistently well for us. M674 has previously bred a top bull sold to Reece Whitelock in the 2020 Bull Sale and used in the stud as a yearling. R943 has moderate birth weight followed by plenty of growth and is strong in the maternal trait of short days to calving. Thick and square with a very strong coat.

**Purchaser:**

**Price: \$**

## Lot: 69 MEADOWSLEA R749

Birth Date: 29/09/20 ID No: 19134020749

MEADOWSLEA L202

**MEADOWSLEA P532**

MEADOWSLEA E310

TAIMATE LAZARUS L12

**MEADOWSLEA P550**

MEADOWSLEA J584

INDEXES	
SR	HD
<b>+\$125</b>	<b>+\$100</b>

### 2021 TRANSTASMAN ANGUS CATTLE EVALUATION EBVS

CED	DTRS	GL	BW	200	400	600	MCW	Milk
<b>+2.6</b>	<b>+2.5</b>	<b>-5.4</b>	<b>+4.4</b>	<b>+36</b>	<b>+70</b>	<b>+93</b>	<b>+86</b>	<b>+12</b>
47%	32%	60%	70%	62%	58%	59%	57%	40%

SS	DC	CW	EMA	Rib Fat	Rump	RBY %	IMF %
<b>+2.4</b>	<b>-6.6</b>	<b>+39</b>	<b>+3.7</b>	<b>+1.0</b>	<b>+1.7</b>	<b>+0.0</b>	<b>+0.8</b>
48%	31%	48%	42%	46%	45%	42%	40%

**Comments:** Leading off this next pen is a nice, upstanding bull out of a top 2-year heifer by Lazarus. Good figures across the board with calving ease, short gestation, and moderate birth weight. His fertility traits are also very strong with good scrotal size and very short days to calving, all combining for a good SR Index. Balance and style - a good bull.

**Purchaser:**

**Price: \$**

# YEARLING ANGUS BULLS

## Lot: 70 MEADOWSLEA R751

Birth Date: 29/09/20 ID No: 19134020751

MEADOWSLEA L202

**MEADOWSLEA P532**

MEADOWSLEA E310

MEADOWSLEA K703

**MEADOWSLEA P675**

MEADOWSLEA G1038

INDEXES	
SR	HD
+\$106	+\$83

### 2021 TRANSTASMAN ANGUS CATTLE EVALUATION EBVS

CED	DTRS	GL	BW	200	400	600	MCW	Milk
-0.5	-1.0	-4.6	+5.3	+32	+66	+88	+80	+11
46%	29%	47%	69%	62%	58%	59%	55%	39%

SS	DC	CW	EMA	Rib Fat	Rump	RBV %	IMF %
+2.3	-5.0	+33	+3.0	+1.2	+2.2	-0.2	+0.6
47%	31%	48%	40%	43%	43%	39%	37%

**Comments:** Another strong, solid son of P532 to follow, this time out of a cow by K703. This bull has some strength and power about him and scanned with the top rib fat in the group, so we know his daughters will be easy-doing and have his good fertility traits as well. A top pick here for mating adult cows and with his style and balance we are sure he will go on to be an impressive sire.

**Purchaser:**

**Price: \$**

## Lot: 71 MEADOWSLEA R875

Birth Date: 13/10/20 ID No: 19134020875

RANGATIRA 13-38

**MEADOWSLEA P555**

MEADOWSLEA H146

TURIHAUA CRUMP E5 (ET)

**MEADOWSLEA H305**

MEADOWSLEA D186

INDEXES	
SR	HD
+\$97	+\$61

### 2021 TRANSTASMAN ANGUS CATTLE EVALUATION EBVS

CED	DTRS	GL	BW	200	400	600	MCW	Milk
-5.3	-1.7	-4.8	+5.9	+33	+65	+90	+93	+14
50%	39%	58%	72%	64%	61%	62%	60%	53%

SS	DC	CW	EMA	Rib Fat	Rump	RBV %	IMF %
+1.7	-7.7	+30	+1.5	+2.3	+2.5	-0.5	+0.2
54%	41%	53%	50%	53%	52%	50%	49%

**Comments:** A grandson of the \$100,000 bull, out of a good cow by Crump who also has a very good Lazarus 2-year-old son in this sale at lot 13. Plenty of scope and stretch here again with good balance and outlook. This bull will be ideal for mating cows with his very strong fertility traits and easy-doing fats. He should mature in to an impressive sire.

**Purchaser:**

**Price: \$**

**MEADOWSLEA**  
ANGUS & SHEEP GENETICS

# YEARLING ANGUS BULLS

## Lot: 72 MEADOWSLEA R905

Birth Date: 19/10/20 ID No: 19134020905

TURIROA RAMBLE 11541 (ET)

**TURIROA 14830 (ET)**

TURIROA TULIP 459

MEADOWSLEA L252

**MEADOWSLEA N197**

MEADOWSLEA L078

INDEXES	
SR	HD
+\$92	+\$83

### 2021 TRANSTASMAN ANGUS CATTLE EVALUATION EBVS

CED	DTRS	GL	BW	200	400	600	MCW	Milk
-1.5	-1.5	-4.5	+5.1	+39	+73	+96	+92	+17
43%	33%	42%	62%	63%	60%	61%	58%	49%
SS	DC	CW	EMA	Rib Fat	Rump	RBV %	IMF %	
+2.3	-4.2	+40	+2.3	+2.0	+2.9	-0.2	+0.0	
52%	34%	51%	49%	52%	51%	48%	47%	

**Comments:** An upstanding son of Turiroa 14830 with lovely clean shoulders and good outlook. Strong fertility traits and very good rib and rump fats in the top 10% for the breed. Plenty of growth and the good backend we always get from the Turiroa bloodline. This is an impressive young sire with presence and style.

**Purchaser:**

**Price: \$**

## Lot: 73 MEADOWSLEA R872

Birth Date: 13/10/20 ID No: 19134020872

MACKENZIE OF STERN

**STERN 18711**

STERN L307

MEADOWSLEA K703

**MEADOWSLEA P665**

MEADOWSLEA J551

INDEXES	
SR	HD
+\$125	+\$105

### 2021 TRANSTASMAN ANGUS CATTLE EVALUATION EBVS

CED	DTRS	GL	BW	200	400	600	MCW	Milk
+6.7	+4.5	-4.7	+1.8	+29	+61	+72	+47	+16
48%	34%	46%	69%	62%	58%	57%	54%	44%
SS	DC	CW	EMA	Rib Fat	Rump	RBV %	IMF %	
+2.0	-5.6	+28	+4.2	+2.3	+3.1	-0.7	+0.4	
48%	32%	49%	44%	47%	46%	44%	42%	

**Comments:** A son of Stern 711, out of a K703 cow, so with these sires in the pedigree we expect exceptional figures for heifer mating and good muscle. R872 has outstanding calving ease and low birthweight in the top 10% for NZ. He scanned really well for EMA and has strong fats as well, all combining for a very strong SR index. A deep-bodied, compact bull.

**Purchaser:**

**Price: \$**

# YEARLING ANGUS BULLS

## Lot: 74 MEADOWSLEA R862

Birth Date: 12/10/20 ID No: 19134020862

MANGAPAPA 443

**RATANUI NUGGET 605**

RATANUI 390 (RP)

KAYJAY FREEDOM I36

**MEADOWSLEA M582**

MEADOWSLEA H206

INDEXES	
SR	HD
+\$89	+\$50

### 2021 TRANSTASMAN ANGUS CATTLE EVALUATION EBVS

CED	DTRS	GL	BW	200	400	600	MCW	Milk
-6.8	-4.5	-1.6	+5.0	+28	+55	+80	+84	+6
45%	30%	38%	71%	63%	59%	61%	58%	45%

SS	DC	CW	EMA	Rib Fat	Rump	RBY %	IMF %
+1.5	-4.6	+27	+3.8	+1.6	+2.4	+0.3	-1.0
49%	30%	50%	45%	48%	47%	44%	42%

**Comments:** A Ratanui Nugget son. These Nuggets are all very well put-together and typically thick, deep, and square. R862 scanned very well for rib and rump fats and we can easily see the easy-doing attributes he will pass on to his progeny.

**Purchaser:**

**Price: \$**

## Lot: 75 MEADOWSLEA R913

Birth Date: 21/10/20 ID No: 19134020913

TE MANIA INFINITY 04 379

**GOLDWYN 017**

GOLDWYN 05-595

MEADOWSLEA K886

**MEADOWSLEA M1013**

MEADOWSLEA K903

INDEXES	
SR	HD
+\$114	+\$69

### 2021 TRANSTASMAN ANGUS CATTLE EVALUATION EBVS

CED	DTRS	GL	BW	200	400	600	MCW	Milk
-4.7	-3.5	-4.7	+5.0	+36	+72	+96	+93	+16
54%	45%	54%	72%	67%	64%	65%	65%	59%

SS	DC	CW	EMA	Rib Fat	Rump	RBY %	IMF %
+2.0	-9.2	+36	+0.3	+0.6	+1.4	-0.8	+1.6
58%	49%	57%	56%	60%	58%	57%	56%

**Comments:** Here is a deep-bodied Goldwyn bull with exceptional fertility traits. He has good scrotal size and his short days to calving figure is in the top 1% for the breed, meaning his daughters will hit puberty early and rebreed early every year. A well put together bull with a moderate frame.

**Purchaser:**

**Price: \$**

# YEARLING ANGUS BULLS

## Lot: 76 MEADOWSLEA R892

Birth Date: 15/10/20 ID No: 19134020892

MEADOWSLEA F540

**MEADOWSLEA L256**

MEADOWSLEA H246

GOLDWYN 017

**MEADOWSLEA N266**

MEADOWSLEA K923

INDEXES	
SR	HD
<b>+\$103</b>	<b>+\$101</b>

### 2021 TRANSTASMAN ANGUS CATTLE EVALUATION EBVS

CED	DTRS	GL	BW	200	400	600	MCW	Milk
<b>+6.0</b>	<b>+2.0</b>	<b>-6.4</b>	<b>+1.3</b>	<b>+25</b>	<b>+58</b>	<b>+71</b>	<b>+66</b>	<b>+18</b>
49%	38%	45%	71%	64%	61%	62%	60%	49%

SS	DC	CW	EMA	Rib Fat	Rump	RBV %	IMF %
<b>+1.4</b>	<b>-6.8</b>	<b>+25</b>	<b>+1.1</b>	<b>+2.0</b>	<b>+2.5</b>	<b>-1.3</b>	<b>+1.1</b>
52%	40%	52%	48%	52%	51%	49%	48%

**Comments:** Nicely-balanced son of L256, out of a cow by Goldwyn 17. Superb heifer mating figures with very low birthweight, good calving ease, and very short gestation along with lovely clean shoulders. Add in his short days to calving and strong easy-doing fats and he is definitely a top pick for heifers.

**Purchaser:**

**Price: \$**

## Lot: 77 MEADOWSLEA R767

Birth Date: 30/09/20 ID No: 19134020767

TAIMATE LAZARUS L12

**MEADOWSLEA P556**

MEADOWSLEA F530

MEADOWSLEA L226

**MEADOWSLEA P583**

MEADOWSLEA M435

INDEXES	
SR	HD
<b>+\$116</b>	<b>+\$108</b>

### 2021 TRANSTASMAN ANGUS CATTLE EVALUATION EBVS

CED	DTRS	GL	BW	200	400	600	MCW	Milk
<b>+4.5</b>	<b>+0.4</b>	<b>-6.0</b>	<b>+4.3</b>	<b>+39</b>	<b>+76</b>	<b>+96</b>	<b>+87</b>	<b>+12</b>
48%	34%	53%	70%	63%	59%	60%	58%	45%

SS	DC	CW	EMA	Rib Fat	Rump	RBV %	IMF %
<b>+2.2</b>	<b>-4.8</b>	<b>+40</b>	<b>+3.6</b>	<b>+1.6</b>	<b>+2.0</b>	<b>-0.8</b>	<b>+1.5</b>
49%	33%	50%	45%	49%	47%	45%	44%

**Comments:** Here is a good son of P556, a Lazarus son who we used as a yearling who has bred very well for us. He was later sold to Helmsdale Angus for \$18,000. A clean-shouldered heifer mating bull with good calving ease and moderate birthweight. Good figures across the board plus he scanned with good very good marbling and strong rib and rump fats. A well-balanced bull with a great depth of body and good pedigree.

**Purchaser:**

**Price: \$**

# YEARLING ANGUS BULLS

## Lot: 78 MEADOWSLEA R927

Birth Date: 27/10/20 ID No: 19134020927

TURIHAUA CRUMP E5 (ET)

### MEADOWSLEA K811

MEADOWSLEA E399

MEADOWSLEA MEAT MACHINE G914

### MEADOWSLEA K707

MEADOWSLEA H102

INDEXES	
SR	HD
+\$127	+\$92

#### 2021 TRANSTASMAN ANGUS CATTLE EVALUATION EBVS

CED	DTRS	GL	BW	200	400	600	MCW	Milk
+3.7	-1.5	-5.6	+3.6	+30	+57	+73	+53	+12
50%	38%	44%	72%	66%	63%	64%	62%	53%

SS	DC	CW	EMA	Rib Fat	Rump	RBV %	IMF %
+1.8	-7.2	+22	+3.1	+2.9	+3.7	-0.6	-0.2
55%	42%	54%	51%	55%	53%	52%	51%

**Comments:** To lead off this pen we have a K811 x Meat Machine cross which always works well for us. Dam is breeding very well with two very good sale bulls previously. Great heifer mating figures with calving ease, short gestation, and low birthweight all in a moderate frame. Good fertility traits too with short days to calving and good fats, which all combine to give a good SR index.

Purchaser:

Price: \$

## Lot: 79 MEADOWSLEA R925

Birth Date: 27/10/20 ID No: 19134020925

MEADOWSLEA F540

### MEADOWSLEA P909

MEADOWSLEA E311

MEADOWSLEA F548

### MEADOWSLEA H152

MEADOWSLEA 1123

INDEXES	
SR	HD
+\$86	+\$68

#### 2021 TRANSTASMAN ANGUS CATTLE EVALUATION EBVS

CED	DTRS	GL	BW	200	400	600	MCW	Milk
-2.9	-8.5	-3.3	+5.6	+34	+65	+80	+73	+14
47%	36%	42%	69%	62%	59%	60%	59%	51%

SS	DC	CW	EMA	Rib Fat	Rump	RBV %	IMF %
+1.3	-4.7	+36	+1.6	+0.7	+1.5	-0.8	+1.2
52%	39%	50%	46%	49%	48%	45%	44%

**Comments:** An F540 grandson here with a bit more frame about him, making him suitable for adult cows. Great top line and balance - he should develop into an impressive adult sire.

Purchaser:

Price: \$



# BRED FOR BALANCE

As a member of AngusNZ you can be assured that the **INDEX DATA** provided in this catalogue specifically relates to New Zealand's environmental conditions and market.

MEADOWSLEA ANGUS IS PROUD  
TO BE PART OF ANGUSNZ

[angusnz.com](http://angusnz.com)

**ANGUS**  
NEW ZEALAND



# YEARLING ANGUS BULLS

## Lot: 80 MEADOWSLEA R854

Birth Date: 09/10/20 ID No: 19134020854

MANGAPAPA 443

**RATANUI NUGGET 605**

RATANUI 390 (RP)

MEADOWSLEA L342

**MEADOWSLEA N503**

MEADOWSLEA H152

### INDEXES

SR

HD

+\$89

+\$67

### 2021 TRANSTASMAN ANGUS CATTLE EVALUATION EBVS

CED	DTRS	GL	BW	200	400	600	MCW	Milk
-0.7	-4.6	-2.7	+3.1	+22	+46	+59	+58	+9
44%	29%	37%	70%	63%	59%	59%	57%	42%
SS	DC	CW	EMA	Rib Fat	Rump	RBV %	IMF %	
+1.7	-4.6	+20	+2.5	+1.7	+2.9	-0.6	+0.1	
49%	29%	49%	43%	46%	46%	43%	40%	

**Comments:** Lovely clean shoulders to this Nugget son. Low birthweight for heifer mating. These Nugget sons are all the same: well-balanced, deep-bodied types that are very easy doing.

Purchaser:

Price: \$

## Lot: 81 MEADOWSLEA R901

Birth Date: 19/10/20 ID No: 19134020901

TE MANIA INFINITY 04 379

**GOLDWYN 017**

GOLDWYN 05-595

TURIHAUA CRUMP E5 (ET)

**MEADOWSLEA N143**

MEADOWSLEA D088

### INDEXES

SR

HD

+\$100

+\$70

### 2021 TRANSTASMAN ANGUS CATTLE EVALUATION EBVS

CED	DTRS	GL	BW	200	400	600	MCW	Milk
-2.3	-2.1	-4.6	+3.5	+28	+59	+80	+86	+15
55%	48%	57%	73%	67%	65%	66%	65%	60%
SS	DC	CW	EMA	Rib Fat	Rump	RBV %	IMF %	
+1.6	-9.2	+26	+0.8	+1.1	+1.7	-1.1	+1.8	
59%	52%	59%	58%	61%	59%	59%	58%	

**Comments:** Another of these low-birthweight Goldwyn sons, this time out of a Crump cow. Nicely balanced, clean-shouldered bull with a deep body and moderate frame. Strong fertility traits and very suitable for heifer mating.

Purchaser:

Price: \$

# YEARLING ANGUS BULLS

## Lot: 82 MEADOWSLEA R840

Birth Date: 07/10/20 ID No: 19134020840

MANGAPAPA 443

**RATANUI NUGGET 605**

RATANUI 390 (RP)

MEADOWSLEA K919

**MEADOWSLEA M594**

MEADOWSLEA K927

INDEXES	
SR	HD
+\$106	+\$69

### 2021 TRANSTASMAN ANGUS CATTLE EVALUATION EBVS

CED	DTRS	GL	BW	200	400	600	MCW	Milk
<b>-0.8</b>	<b>-0.2</b>	<b>-3.0</b>	<b>+2.6</b>	<b>+23</b>	<b>+51</b>	<b>+64</b>	<b>+59</b>	<b>+9</b>
44%	29%	36%	70%	63%	58%	61%	58%	43%

SS	DC	CW	EMA	Rib Fat	Rump	RBY %	IMF %
<b>+2.1</b>	<b>-5.3</b>	<b>+21</b>	<b>+2.0</b>	<b>+2.4</b>	<b>+3.5</b>	<b>-0.6</b>	<b>-0.1</b>
49%	29%	49%	43%	47%	46%	43%	40%

**Comments:** Another of these very good, compact, clean-shouldered Nugget sons that are so consistent throughout the catalogue. Low birthweight, good fertility, and very strong fats in an easy-doing moderate frame make him a good pick for heifers. This is a well-bred bull with his dam's first calf used as a yearling in the stud and later sold to Okaka Angus.

**Purchaser:**

**Price: \$**

## Lot: 83 MEADOWSLEA R946

Birth Date: 01/11/20 ID No: 19134020946

MACKENZIE OF STERN

**STERN 18711**

STERN L307

MEADOWSLEA L106

**MEADOWSLEA P600**

MEADOWSLEA L186

INDEXES	
SR	HD
+\$119	+\$105

### 2021 TRANSTASMAN ANGUS CATTLE EVALUATION EBVS

CED	DTRS	GL	BW	200	400	600	MCW	Milk
<b>+3.8</b>	<b>+3.4</b>	<b>-3.4</b>	<b>+3.0</b>	<b>+36</b>	<b>+71</b>	<b>+93</b>	<b>+79</b>	<b>+13</b>
47%	33%	46%	69%	61%	57%	58%	56%	41%

SS	DC	CW	EMA	Rib Fat	Rump	RBY %	IMF %
<b>+2.6</b>	<b>-5.0</b>	<b>+42</b>	<b>+3.6</b>	<b>+0.7</b>	<b>+1.3</b>	<b>+0.1</b>	<b>+0.4</b>
46%	30%	48%	42%	45%	44%	42%	40%

**Comments:** Great heifer mating figures here as we see from all the Stern 711 sons in the catalogue. R946 has calving ease and moderate birthweight followed by very good growth. He has good fertility traits with strong scrotal size and short days to calving combining for a good SRI index.

**Purchaser:**

**Price: \$**

# YEARLING ANGUS BULLS

## Lot: 84 MEADOWSLEA R951

Birth Date: 11/11/20 ID No: 19134020951

MEADOWSLEA K904

### MEADOWSLEA N119

MEADOWSLEA E350

MEADOWSLEA L226

### MEADOWSLEA N177

MEADOWSLEA F556

INDEXES	
SR	HD
+\$119	+\$69

#### 2021 TRANSTASMAN ANGUS CATTLE EVALUATION EBVS

CED	DTRS	GL	BW	200	400	600	MCW	Milk
-4.2	-5.4	-4.4	+6.3	+41	+72	+87	+85	+12
47%	33%	51%	71%	64%	60%	61%	59%	46%
SS	DC	CW	EMA	Rib Fat	Rump	RBV %	IMF %	
+2.5	-6.6	+35	+2.4	+2.2	+3.3	-0.7	+1.2	
50%	33%	50%	45%	49%	47%	45%	44%	

**Comments:** Here is nice, compact N119 son with a good deep body and very easy doing fats. Good fertility traits with strong scrotal size and short days to calving in the top 10% for the breed.

Purchaser:

Price: \$

## Lot: 85 MEADOWSLEA R955

Birth Date: 11/11/20 ID No: 19134020955

TE MANIA INFINITY 04 379

### GOLDWYN 017

GOLDWYN 05-595

MEADOWSLEA K703

### MEADOWSLEA M412

MEADOWSLEA K735

INDEXES	
SR	HD
+\$134	+\$80

#### 2021 TRANSTASMAN ANGUS CATTLE EVALUATION EBVS

CED	DTRS	GL	BW	200	400	600	MCW	Milk
-1.2	+0.1	-4.9	+3.6	+35	+70	+86	+66	+16
54%	45%	53%	73%	67%	65%	65%	65%	59%
SS	DC	CW	EMA	Rib Fat	Rump	RBV %	IMF %	
+3.0	-7.9	+33	+2.9	+2.3	+3.4	-0.9	+1.4	
59%	49%	57%	56%	60%	58%	57%	56%	

**Comments:** Terrific figures here with this Goldwyn 17 x K703 cross which always works well for us. Moderate birth weight with the very strong fertility traits of scrotal size and short days to calving in the top 10% for the breed. Good muscle and very strong fats all combine giving him a top SR index of \$134. This is a well-bred bull with his dam producing a top bull last year who was used in the stud and later sold to David Hyde for \$10,000 in the 2021 bull sale. Deep thick and square.

Purchaser:

Price: \$

MEADOWSLEA  
ANGUS & SHEEP GENETICS

# YEARLING ANGUS BULLS

## Lot: 86 MEADOWSLEA R921

Birth Date: 27/10/20 ID No: 19134020921

TE MANIA INFINITY 04 379

**GOLDWYN 017**

GOLDWYN 05-595

MATAURI REALITY 839

**MEADOWSLEA N120**

MEADOWSLEA H191

INDEXES	
SR	HD
+\$118	+\$97

### 2021 TRANSTASMAN ANGUS CATTLE EVALUATION EBVS

CED	DTRS	GL	BW	200	400	600	MCW	Milk
+3.2	+4.2	-5.9	+3.1	+32	+65	+84	+86	+13
56%	51%	64%	73%	68%	65%	65%	65%	61%
SS	DC	CW	EMA	Rib Fat	Rump	RBV %	IMF %	
+2.3	-8.2	+35	+1.2	+2.5	+2.3	-1.3	+2.0	
60%	52%	59%	59%	62%	60%	60%	59%	

**Comments:** Another very well bred bull to follow, again by Goldwyn 17, and this time out of a cow by Matauri Reality. Lots of calving ease, with short gestation and a moderate birthweight. R921 has very strong fertility traits and good IMF giving a strong index. A very good pick for heifer mating.

**Purchaser:**

**Price: \$**

## Lot: 87 MEADOWSLEA R723

Birth Date: 25/09/20 ID No: 19134020723

TURIHAUA CRUMP E5 (ET)

**MEADOWSLEA N166**

MEADOWSLEA G922

MEADOWSLEA L240

**MEADOWSLEA N499**

MEADOWSLEA G950

INDEXES	
SR	HD
+\$121	+\$93

### 2021 TRANSTASMAN ANGUS CATTLE EVALUATION EBVS

CED	DTRS	GL	BW	200	400	600	MCW	Milk
+2.4	+2.3	-5.0	+2.9	+32	+64	+84	+80	+12
47%	34%	40%	71%	60%	57%	59%	56%	42%
SS	DC	CW	EMA	Rib Fat	Rump	RBV %	IMF %	
+1.7	-7.2	+34	+2.8	+2.0	+2.1	-0.2	-0.3	
49%	36%	48%	46%	50%	48%	47%	45%	

**Comments:** A good solid bull by N166 to lead off this final pen. Good calving ease, low birthweight, plenty of growth, very good fertility traits and strong fats give a very good SRI index of \$121.

**Purchaser:**

**Price: \$**

# YEARLING ANGUS BULLS

## Lot: 88 MEADOWSLEA R846

Birth Date: 08/10/20 ID No: 19134020846

MANGAPAPA 443

**RATANUI NUGGET 605**

RATANUI 390 (RP)

MEADOWSLEA MEAT MACHINE G914

**MEADOWSLEA N163**

MEADOWSLEA D097

### INDEXES

SR

HD

+\$109

+\$77

### 2021 TRANSTASMAN ANGUS CATTLE EVALUATION EBVS

CED	DTRS	GL	BW	200	400	600	MCW	Milk
<b>+0.2</b>	<b>-1.3</b>	<b>-2.8</b>	<b>+3.2</b>	<b>+27</b>	<b>+55</b>	<b>+70</b>	<b>+67</b>	<b>+8</b>
46%	32%	41%	71%	60%	57%	59%	56%	45%
SS	DC	CW	EMA	Rib Fat	Rump	RBV %	IMF %	
<b>+1.7</b>	<b>-4.6</b>	<b>+26</b>	<b>+4.1</b>	<b>+2.2</b>	<b>+3.1</b>	<b>-0.1</b>	<b>-0.5</b>	
51%	32%	48%	46%	49%	48%	45%	43%	

**Comments:** Another of these solid Nugget sons that have been a real feature of the yearling catalogue. R846 has calving ease with low birthweight as well as good muscle and fats. He is out of a cow by Meat Machine so a double up of thick, deep, easy-doing bloodlines here.

Purchaser:

Price: \$

## Lot: 89 MEADOWSLEA R787

Birth Date: 02/10/20 ID No: 19134020787

MEADOWSLEA MEAT MACHINE G914

**MEADOWSLEA K703**

MEADOWSLEA H126

MEADOWSLEA K924

**MEADOWSLEA M511**

MEADOWSLEA K794

### INDEXES

SR

HD

+\$107

+\$97

### 2021 TRANSTASMAN ANGUS CATTLE EVALUATION EBVS

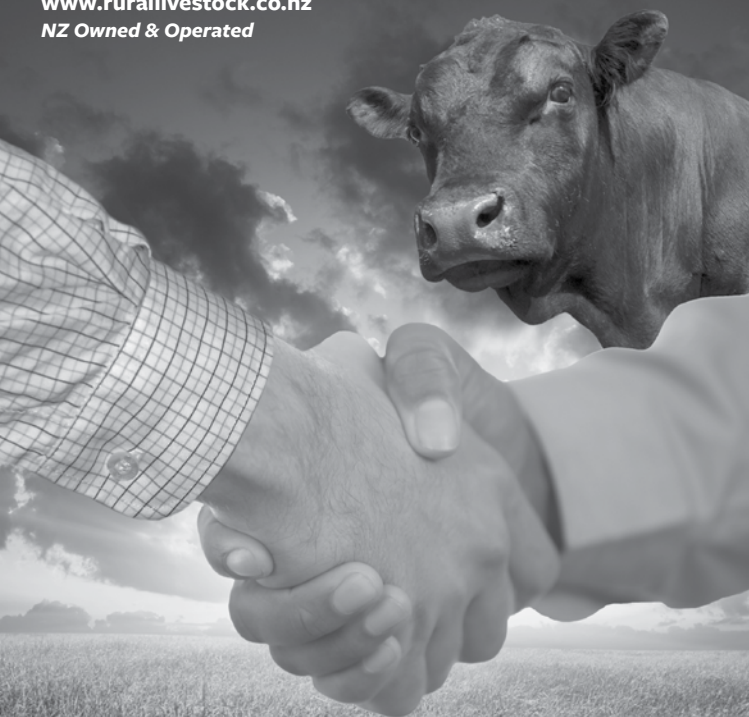
CED	DTRS	GL	BW	200	400	600	MCW	Milk
<b>+5.0</b>	<b>+1.5</b>	<b>-5.6</b>	<b>+2.8</b>	<b>+29</b>	<b>+58</b>	<b>+75</b>	<b>+74</b>	<b>+13</b>
50%	36%	41%	73%	67%	64%	65%	63%	52%
SS	DC	CW	EMA	Rib Fat	Rump	RBV %	IMF %	
<b>+1.9</b>	<b>-6.9</b>	<b>+26</b>	<b>+2.8</b>	<b>+3.2</b>	<b>+3.3</b>	<b>-1.0</b>	<b>+0.1</b>	
55%	41%	54%	52%	55%	53%	51%	51%	

**Comments:** A nice heifer mating option in this K703 son. Very good calving ease, short gestation, and low birthweight. He is also strong in the maternal traits with his short days to calving and rib fat figures ranking him in the top 5% for the breed. A moderate framed bull with great depth of body.

Purchaser:

Price: \$

[www.rurallivestock.co.nz](http://www.rurallivestock.co.nz)  
NZ Owned & Operated



**Secure a deal with**



**Rural Livestock**

**STUD STOCK**

**Anthony Cox**

**0272 083 071**

**LIVESTOCK MANAGER**

**Simon Cox**

**0272 097 665**

**LIVESTOCK REPRESENTATIVES**

**Donald Cooke**

**0274 730 854**

**Quinten Botha**

**0274 730 885**

**Fraser Adams**

**0274 730 823**

# YEARLING ANGUS BULLS

## Lot: 90 MEADOWSLEA R806

Birth Date: 05/10/20 ID No: 19134020806

MEADOWSLEA K890

**MEADOWSLEA P539**

MEADOWSLEA H299

MEADOWSLEA F540

**MEADOWSLEA M639**

MEADOWSLEA G858

INDEXES	
SR	HD
+\$93	+\$69

### 2021 TRANSTASMAN ANGUS CATTLE EVALUATION EBVS

CED	DTRS	GL	BW	200	400	600	MCW	Milk
-4.9	-4.8	-4.9	+6.6	+41	+77	+104	+104	+14
48%	34%	53%	71%	59%	56%	57%	57%	44%
SS	DC	CW	EMA	Rib Fat	Rump	RBY %	IMF %	
+2.0	-5.8	+47	+1.2	+1.0	+1.6	-0.4	+0.4	
50%	36%	48%	45%	48%	47%	45%	43%	

**Comments:** A bigger-framed bull here out of a cow by F540. Suitable for cow mating. Tremendous growth and deep body. A good strong bull who should really develop.

**Purchaser:**

**Price: \$**

## Lot: 91 MEADOWSLEA R938

Birth Date: 28/10/20 ID No: 19134020938

MEADOWSLEA MEAT MACHINE G914

**MEADOWSLEA P703**

MEADOWSLEA L122

MEADOWSLEA F540

**MEADOWSLEA K853**

MEADOWSLEA D188

INDEXES	
SR	HD
+\$99	+\$103

### 2021 TRANSTASMAN ANGUS CATTLE EVALUATION EBVS

CED	DTRS	GL	BW	200	400	600	MCW	Milk
+6.0	+1.9	-5.7	+2.9	+30	+63	+78	+73	+17
42%	34%	45%	58%	60%	58%	58%	56%	50%
SS	DC	CW	EMA	Rib Fat	Rump	RBY %	IMF %	
+1.5	-5.4	+33	+2.3	+2.7	+2.6	-0.7	+0.0	
51%	40%	50%	47%	51%	50%	48%	46%	

**Comments:** Superb heifer mating figures on this P703 son. A good pedigree here, out of a high performing cow by F540 who bred a son sold to Flagstaff Station for \$14,000 in 2020. Good calving ease with short gestation and low birthweight. Very good easy-doing fats on a moderate frame. We like the look of this chap.

**Purchaser:**

**Price: \$**

# YEARLING ANGUS BULLS

## Lot: 92 MEADOWSLEA R958

Birth Date: 14/11/20 ID No: 19134020958

MACKENZIE OF STERN

STERN 18711

STERN L307

MEADOWSLEA M430

MEADOWSLEA P551

MEADOWSLEA M1079

INDEXES	
SR	HD
+\$137	+\$107

### 2021 TRANSTASMAN ANGUS CATTLE EVALUATION EBVS

CED	DTRS	GL	BW	200	400	600	MCW	Milk
+4.8	+3.4	-4.0	+3.0	+36	+73	+84	+51	+15
40%	30%	44%	56%	58%	55%	54%	53%	40%
SS	DC	CW	EMA	Rib Fat	Rump	RBY %	IMF %	
+2.1	-3.9	+41	+5.0	+0.8	+1.7	+0.0	+1.1	
45%	26%	46%	41%	44%	43%	41%	39%	

**Comments:** Another Stern 711 son with the same calving ease and low birthweight they all exhibit. Moderate frame, good muscle, and great figures across the board with SR Index of \$137, ranking him in the top 10% in NZ.

Purchaser:

Price: \$

## Lot: 93 MEADOWSLEA R942

Birth Date: 01/11/20 ID No: 19134020942

MEADOWSLEA K904

MEADOWSLEA N119

MEADOWSLEA E350

MEADOWSLEA L141

MEADOWSLEA N294

MEADOWSLEA L248

INDEXES	
SR	HD
+\$124	+\$86

### 2021 TRANSTASMAN ANGUS CATTLE EVALUATION EBVS

CED	DTRS	GL	BW	200	400	600	MCW	Milk
+1.8	+0.5	-5.8	+4.2	+33	+61	+68	+68	+12
47%	33%	50%	71%	64%	60%	60%	59%	45%
SS	DC	CW	EMA	Rib Fat	Rump	RBY %	IMF %	
+2.8	-6.8	+28	+2.3	+3.7	+4.1	-1.0	+1.4	
48%	33%	50%	45%	49%	48%	46%	44%	

**Comments:** Nice, moderate-framed, deep-bodied bull by N119. Moderate birthweight and calving ease with clean shoulders. Very strong fertility traits once again with rib and rump fats that are off the scale and strong SR Index as well.

Purchaser:

Price: \$



# YEARLING ANGUS BULLS

## Lot: 94 MEADOWSLEA R956

Birth Date: 14/11/20 ID No: 19134020956

MEADOWSLEA MEAT MACHINE G914

### MEADOWSLEA K703

MEADOWSLEA H126

MEADOWSLEA F540

### MEADOWSLEA K813

MEADOWSLEA E311

INDEXES	
SR	HD
+\$113	+\$94

#### 2021 TRANSTASMAN ANGUS CATTLE EVALUATION EBVS

CED	DTRS	GL	BW	200	400	600	MCW	Milk
+3.1	-0.8	-5.1	+4.0	+34	+68	+84	+75	+17
48%	38%	48%	64%	66%	64%	64%	62%	57%
SS	DC	CW	EMA	Rib Fat	Rump	RBY %	IMF %	
+2.0	-6.7	+33	+4.2	+2.7	+3.5	-0.9	+0.4	
59%	45%	55%	54%	57%	56%	53%	53%	

**Comments:** Here is another of these K703 x F540 crosses that always works well. Moderate birthweight, good calving ease, short gestation and good fertility traits across the board with those rib and rump fats in the top 1% for the breed. Another great heifer mating option.

Purchaser:

Price: \$

## Lot: 95 MEADOWSLEA R970

Birth Date:

ID No:

INDEXES	
SR	HD

#### 2021 TRANSTASMAN ANGUS CATTLE EVALUATION EBVS

CED	DTRS	GL	BW	200	400	600	MCW	Milk
SS	DC	CW	EMA	Rib Fat	Rump	RBY %	IMF %	

**Comments:** Unknown parentage. Clean shouldered, deep-bodied bull very solid good type of bull. He lost his all his tags and we are waiting for DNA to come back to identify him should be available by sale day!

Purchaser:

Price: \$

# YEARLING ANGUS BULLS

## Lot: 96 MEADOWSLEA R917

Birth Date: 23/10/20 ID No: 19134020917

MEADOWSLEA MEAT MACHINE G914

**MEADOWSLEA K703**

MEADOWSLEA H126

TURIHAUA CRUMP E5 (ET)

**MEADOWSLEA K945**

MEADOWSLEA E391

INDEXES	
SR	HD
+\$103	+\$91

### 2021 TRANSTASMAN ANGUS CATTLE EVALUATION EBVS

CED	DTRS	GL	BW	200	400	600	MCW	Milk
+2.5	-3.6	-5.1	+4.2	+33	+63	+84	+75	+17
54%	42%	48%	74%	68%	66%	67%	65%	57%

SS	DC	CW	EMA	Rib Fat	Rump	RBV %	IMF %
+2.0	-7.0	+27	+3.8	+2.8	+3.1	-0.6	-0.2
60%	46%	57%	56%	58%	57%	55%	55%

**Comments:** K703 son this time out of a top-breeding Crump cow who has had three previous sale bulls selling up to \$14,000. Moderate birthweight, good calving ease, strong fertility traits, and terrific fats all in a moderate frame. A deep, thick, and square-bodied bull ideal for heifers.

**Purchaser:**

**Price: \$**

## Lot: 97 MEADOWSLEA R625

Birth Date: 13/09/20 ID No: 19134020625

TAIMATE LAZARUS L12

**MEADOWSLEA P556**

MEADOWSLEA F530

TURIHAUA CRUMP E5 (ET)

**MEADOWSLEA P893**

MEADOWSLEA J538

INDEXES	
SR	HD
+\$114	+\$79

### 2021 TRANSTASMAN ANGUS CATTLE EVALUATION EBVS

CED	DTRS	GL	BW	200	400	600	MCW	Milk
-0.4	-2.8	-4.8	+5.2	+35	+67	+88	+81	+12
50%	38%	54%	70%	63%	59%	60%	57%	47%

SS	DC	CW	EMA	Rib Fat	Rump	RBV %	IMF %
+2.1	-8.4	+32	+1.2	+3.0	+3.5	-2.0	+1.6
50%	37%	51%	47%	51%	49%	48%	46%

**Comments:** A son of the very good Lazarus bull who was used in the stud and later sold to Helmsdale Angus for \$18,000. Out of a 2-year heifer by Crump, this is a good pedigree with the Grandam breeding a stud bull as well. This chap is worth a good look at, has potential with moderate birthweight, good fertility traits, and strong IMF scanning with the 4th highest marbling % of the sale bulls.

**Purchaser:**

**Price: \$**

# YEARLING ANGUS BULLS

**Lot: 98      MEADOWSLEA R597**

Birth Date: 08/09/20      ID No: 19134020597

MEADOWSLEA L226

**MEADOWSLEA P700**

MEADOWSLEA H117

MEADOWSLEA M429

**MEADOWSLEA P643**

MEADOWSLEA M646

INDEXES	
SR	HD
+\$123	+\$108

## 2021 TRANSTASMAN ANGUS CATTLE EVALUATION EBVS

CED	DTRS	GL	BW	200	400	600	MCW	Milk
<b>+6.2</b>	<b>+2.5</b>	<b>-5.8</b>	<b>+2.4</b>	<b>+31</b>	<b>+63</b>	<b>+78</b>	<b>+64</b>	<b>+17</b>
46%	31%	41%	70%	62%	58%	60%	56%	42%

SS	DC	CW	EMA	Rib Fat	Rump	RBV %	IMF %
<b>+2.6</b>	<b>-6.5</b>	<b>+30</b>	<b>+3.9</b>	<b>+1.9</b>	<b>+2.3</b>	<b>-0.1</b>	<b>+0.5</b>
48%	33%	49%	43%	47%	46%	43%	42%

**Comments:** Very strong heifer mating figures here to finish on. This is a son of the yearling P700, and out of a 2-year heifer by M429, who was sold to Red Oak Stud for \$18,000. These young genetics are certainly leading the way. Low birthweight, very strong calving ease, and short gestation. He has great fertility traits and very strong rib and rump fats which combine to give a strong SR Index of \$123.

<b>Purchaser:</b>	<b>Price: \$</b>
-------------------	------------------

# NOTES

A black and white photograph of a man in a checkered shirt standing in a wooden pen, using a handheld electronic device on a sheep. The device has a screen and a keypad. The background shows the structure of the pen and some equipment.

**TRU-Test™**

**XR5000  
Weigh Scale  
and XRS2  
EID Reader**

**The perfect  
combination  
for breeders.**

**How are you tracking?  
Let's talk.  
0800 878 837**

800121010

# NOTES



High Survival, High Performance Romneys

1/2 Romney x 1/2 Portendale (Furledale)  
1/2 Romney x 1/4 Portendale x 1/4 Texel

1/2 Romney x 1/2 Texel  
3/4 Romney x 1/4 Texel

100% Romney (100% 1/2 Romney)

100% Terrestrial (Furledale x 1/2 Romney)

100% Maternal (Furledale x 1/2 Romney)

## Meadowslea Hill Bred Rams



MEADOWSLEA  
ANGUS & SHEEP GENETICS



28 YEARS UNSHEPHERDED ON HILL-COUNTRY

# RAM SALE

## 300 RAMS

Thursday November 25th

On-Farm, Fairlie  
and  
Online at [www.meadowslea.co.nz](http://www.meadowslea.co.nz)  
through the Yourbid platform.

David Giddings 027 2299760  
George Giddings 027 656 3323  
[giddingsfamily@xtra.co.nz](mailto:giddingsfamily@xtra.co.nz)



# 2 YEAR OLDS

TAG	LOT	TAG	LOT
Q122.....	22	Q329.....	19
Q138.....	30	Q330.....	7
Q147.....	10	Q332.....	6
Q149.....	3	Q365.....	20
Q199.....	33	Q371.....	26
Q205.....	29	Q409.....	23
Q222.....	13	Q419.....	2
Q225.....	9	Q425.....	14
Q232.....	35	Q432.....	34
Q239.....	31	Q479.....	1
Q242.....	16	Q482.....	25
Q246.....	32	Q486.....	21
Q248.....	15	Q503.....	28
Q264.....	18	Q510.....	12
Q279.....	4	Q514.....	24
Q282.....	11	Q519.....	27
Q298.....	8	Q520.....	17
Q318.....	5		

# YEARLINGS

TAG	LOT	TAG	LOT
R580.....	45	R829.....	54
R586.....	39	R837.....	60
R597.....	98	R840.....	82
R599.....	61	R846.....	88
R620.....	41	R850.....	50
R625.....	97	R854.....	80
R635.....	52	R855.....	42
R636.....	40	R862.....	74
R640.....	37	R865.....	55
R651.....	44	R869.....	62
R653.....	47	R872.....	73
R671.....	51	R875.....	71
R688.....	56	R892.....	76
R701.....	66	R901.....	81
R720.....	63	R905.....	72
R723.....	87	R913.....	75
R728.....	46	R917.....	96
R734.....	36	R918.....	65
R742.....	67	R921.....	86
R744.....	58	R925.....	79
R748.....	43	R927.....	78
R749.....	69	R937.....	49
R751.....	70	R938.....	91
R762.....	48	R942.....	93
R767.....	77	R943.....	68
R771.....	38	R946.....	83
R774.....	53	R951.....	84
R776.....	64	R955.....	85
R787.....	89	R956.....	94
R797.....	59	R958.....	92
R806.....	90	R970.....	95
R822.....	57		

# *Premier Bull cover*

## ***What is Premier Bull cover?***

All bulls auctioned at this sale up to the value of \$50,000 will automatically be covered under FMG's Premier Bull cover for 14 days at no cost to the purchaser.

## ***Length of cover***

To extend cover for the specified bull beyond 14 days you need to tick Premier Bull cover 12 months on the Purchaser Instruction and Insurance Slip in this catalogue. The specified bull is then covered for the remaining period of 12 months. The premium is payable to FMG and is in addition to the purchase price of the bull.

If you require an alternative cover period talk to an FMG representative.

## ***Your bull's value***

Any bull covered under this policy must be purchased for \$50,000 or less. For any bull purchased over \$50,000 talk to an FMG representative.

## ***During the period of insurance, the specified animal is covered for:***

- Death or infertility as a result of accident, disease or illness.
- Transit.
- Theft.

## ***What we will pay***

Fair market value of your specified bull, less any amount you receive for the sale of the carcass, up to the amount shown on the insurance certificate.



Call us on  
0800 366 466



Visit our website  
[www.fmg.co.nz](http://www.fmg.co.nz)



# MEADOWSLEA SPRING ANGUS BULL SALE

## PURCHASER'S INSTRUCTION SLIP

(To be handed into the Auctioneers before leaving sale)

Name:.....

Address: .....

.....

Telephone:..... NAIT no.# .....

Email: .....

**Purchases:**

Lot No:..... \$..... Lot No.....\$ .....

Lot No:..... \$..... Lot No.....\$ .....

Lot No:..... \$..... Lot No.....\$ .....

Lot No:..... \$..... Lot No.....\$ .....

Lot No:..... \$..... Lot No.....\$ .....

Lot No:..... \$..... Lot No.....\$ .....

Lot No:..... \$..... Lot No.....\$ .....

Lot No:..... \$..... Lot No.....\$ .....

Lot No:..... \$..... Lot No.....\$ .....

Lot No:..... \$..... Lot No.....\$ .....

Transport Company.....

Account to: .....

**FMG Insurance Cover**

- ☒ 14 days - FMG Premium Bull cover (at no charge)
- ☐ Extend cover to 12 months - FMG Premium Bull cover

*Please select your preferred payment method:*

- ☐ FMG direct
- ☐ Farmlands
- ☐ Ruralco

Deliver to:.....

Signature of Purchaser: .....

Date:.....

NO VERBAL INSTRUCTIONS CAN BE ACCEPTED



# PROVEN TO PERFORM IN A TOUGH TESTING GROUND



**M**eadowslea stud cows live in a different world to most Angus Stud cows in NZ and have naturally developed into a type that thrives in their environment. Moderate framed cows that have deep wide bodies and carry good fat covers are proven to be the most productive in this country. The Use of Strong NZ bloodlines ensures this suitability for the environment will continue.

At Meadowslea our strong focus on the key Maternal and Fertility traits is driven by 30 years of successfully mating yearling heifers, the results are clear to see. Many of our clients, in some of NZ's tough environments, are successfully calving heifers as 2yr olds and achieving outstanding conception and re-breeding results.

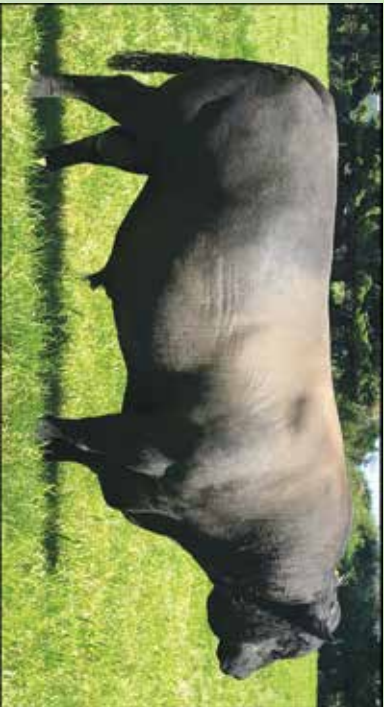
It is no surprise then that Meadowslea bulls shift and perform for clients in hill country.

## PROVEN WHERE IT COUNTS!



# NZ Trait leaders for CALVING EASE and SHORT GESTATION

These two senior sires, now aged 11 and 10 years, have had a profound impact on the Meadowslea stud and the bulls in this catalogue, with a large selection ideally suited to heifer and dairy cow mating. This is a real endorsement of the emphasis we place on fertility and maternal traits in our breeding programme.



**MEADOWSLEA F540** - 11 years old and still going strong. Outstanding maternal and fertility traits; ranks in the top 15% of the breed for calving ease, and the top 10% for scrotal size, rib fat and rump fat. His short gestation, milk, and short days to calving figures are in the top 1%! **SEMEN AVAILABLE**



**MEADOWSLEA MEAT MACHINE G914** - deep, thick, and exceptionally well muscled. He is a trait leader for calving ease, and ranks in the top 5% of the breed for short gestation, the top 10% for low birth weight, and the top 1% for both rib and rump fat. **SEMEN AVAILABLE**