

PREMIER
— CATTLE CO. —

Speckle Park & Murray Grey Bull Sale

29 SEPTEMBER 2022, 12 NOON
400 Brunskill Road, Cambridge

Carrfields 

Auctioneer **Kelly Higgins** 027 600 2374

Stud Stock Services **Bruce Orr** 027 492 2122

SALE WILL BE LIVE-STREAMED VIA **bidr**



PREMIER C

PREMIER
— CATTLE CO. —

5TH ANNUAL SPECKLE PARK & MURRAY GREY BULL SALE

Sale catalogue will be on-line at
WWW.PREMIERCATTLECO.CO.NZ

Thursday, 29 September 2022, 12noon

400 Brunskill Road, Cambridge, NZ

Pre-sale viewing from 10am

Sale Will be live-streamed via [bidr](http://bidr.co.nz)

for more information visit bidr.co.nz

COMPRISING OF

20 x Speckle Park Bulls

5 x Murray Grey Bulls

CONTACT

Derek & Catherine Hayward

Premier Cattle Co Ltd

M 027 226 6686

E derek.premier@farmside.co.nz

Carrfields 

Auctioneer Carrfields Livestock

Kelly Higgins **M** 027 600 2374

Livestock Agents

Brent Espin **M** 027 551 3660

Ben Deroles **M** 027 702 4196

Chris McBride **M** 027 587 1145

Dan Sweetapple **M** 027 046 0755

Stud Stock Services

Bruce Orr **M** 027 492 2122

CATTLE CO.



2022 SALE FOREWORD

We are very pleased with the draft of bulls for our 5th Annual Sale. Bulls from the heart of our program complimented by those that are the results of imported embryos from donor dams I saw and assessed myself in Canada. Bulls that will be compatible in various genetic programs and that also possess the relevant traits required for efficient beef production systems.

We continue to offer all our bulls in this sale, apart from any retained as a herd sire no bulls are kept to sell later.... you have access to the best of our program in this sale.

At a time when we are feeling the push to be efficient producers and the pressures around land use rise we have been increasing our focus on what we can do to ensure our bulls contribute positively in this changing landscape and environment. During my Canadian tour in 2019 I viewed a large group of outstanding commercial weaner heifers, this program had only used Leptin TT bulls for several years and had experienced phenomenal improvement in weaning weights. I see the Leptin test as a great tool for commercial producers allowing a focus on improved efficiency in their program. We are fortunate to have several Leptin TT bulls in the offering and will be continuing to research in this space.

Year on year we are making positive progress in our herds development, the heifers are powerful, maternal, sound structured with outstanding temperament and bulls that suit

the requirements of an ever-changing industry. We are extremely pleased with the progeny of our embryo program, both imported and our own.

The addition of the Murray Grey's to our program will be exciting as we establish the herd to our target number over the next two years. Part of our plan is to introduce new genetics to our Murray Grey program, we have secured the NZ semen rights in Venturon Rectify and will use him extensively in our AI and ET program this year.

The environment at Brunskill Road with its rolling to steeper contour continues to provide an environment where we can develop our bulls to their potential. Bulls will come forward on sale day in great condition, they will be scanned for EMA, Fat & IMF, Scrotal measured and examined prior to sale day with results available on the Supplementary Sheet prior to sale day.

Catherine & I are extremely appreciative of the team we have working with us at Premier, their dedication to ensuring the very best care for our livestock across our whole business is second to none. The support we receive from family and friends as always is appreciated.

We look forward to you joining us on **September 29th for the "2022 Premier Sale"**

All the best,
Derek, Catherine, Max & Jake Hayward

NOTICE & CONDITIONS



INSPECTION

Cattle will be available for inspection prior to the sale by contacting the Agents or the Vendor.

HEALTH

All bulls have been tested negative for BVD and will be vaccinated for BVD. Bulls will be TB tested and have testicles palpated prior to the sale.

DELIVERY

Please leave clear delivery instructions for your purchase. Derek can be contacted to arrange deliveries: 027 226 6686

SELLING ORDER

The vendor reserves the right to alter the lot order. The highest bidder for any lot shall be the purchaser, should any dispute arise, the dispute maybe settled by the auctioneer at his opinion or the lot maybe put up again & resold.

BUYER REGISTRATION

A buyer's number will operate at the sale therefore it will be necessary for all prospective purchasers to register prior to the sale commencing.

REBATE

A purchasing rebate will be paid to non-participating livestock companies and recognised independent livestock agents introducing and/or accompanying buyers to the sale.

GST: All lots are sold Exclusive of GST.

INSURANCE

All care will be taken with the cattle awaiting delivery, but they become the responsibility of the purchaser at the fall of the hammer, therefore insurance is strongly advised.

TERMS & CONDITIONS

The NZ Stock & Station Agents Association Conditions of Sale and to the extent deemed relevant by Carrfields. Carrfields' Terms of Sale apply to this sale. These terms can be inspected at the registration desk and on the wall in the auction room.

FAULTS

While all care & responsibility has been taken by the vendors, agents and Pivot Design, no responsibility can be taken for any errors or omissions. All animals are sold in an as is where is condition and any perceived faults cannot be readdressed by the above parties.

PERCENTILE BANDS

September 2022 Speckle Park GROUP BREEDPLAN - Percentile Bands for all 2020 born animals

Use this table as a guide to compare individual animals with the current genetic level of the breed

Percentile Bands for 2020 Born Calves														
	GESTATION LENGTH (DAYS)	BIRTH WT (KG)	200 DAY WT (KG)	400 DAY WT (KG)	600 DAY WT (KG)	MATURE COW WT (KG)	MILK (KG)	SCROTAL SIZE (CM)	CARCASE WT (KG)	EMA (SQ CM)	RIB FAT (MM)	RUMP FAT (MM)	RETAIL BEEF YIELD (%)	IMF (%)
Top 1%	-2.5	-1.2	+31	+46	+59	+64	+9	+1.5	+36	+2.2	+2.3	+3.2	+1.5	+1.3
Top 5%	-1.4	-0.3	+26	+40	+51	+55	+7	+1.1	+32	+1.7	+1.3	+1.7	+1.1	+0.7
Top 10%	-1.0	+0.3	+23	+36	+48	+51	+6	+0.9	+29	+1.4	+0.9	+1.2	+0.9	+0.5
Top 15%	-0.8	+0.6	+22	+34	+44	+46	+6	+0.7	+27	+1.3	+0.7	+0.9	+0.7	+0.4
Top 20%	-0.6	+0.8	+20	+31	+42	+44	+6	+0.7	+26	+1.2	+0.6	+0.8	+0.6	+0.3
Top 25%	-0.4	+1.0	+19	+30	+40	+41	+5	+0.6	+24	+1.1	+0.5	+0.6	+0.5	+0.3
Top 30%	-0.3	+1.2	+18	+29	+38	+39	+5	+0.5	+23	+1.0	+0.4	+0.4	+0.5	+0.2
Top 35%	-0.2	+1.3	+17	+27	+36	+37	+5	+0.5	+22	+0.9	+0.3	+0.3	+0.4	+0.2
Top 40%	+0.0	+1.4	+17	+26	+34	+35	+4	+0.4	+21	+0.8	+0.2	+0.2	+0.3	+0.1
Top 45%	+0.1	+1.6	+16	+25	+33	+33	+4	+0.4	+20	+0.8	+0.1	+0.1	+0.2	+0.1
Top 50%	+0.2	+1.7	+15	+24	+32	+32	+4	+0.3	+19	+0.7	+0.0	+0.0	+0.1	+0.0
Top 55%	+0.3	+1.8	+14	+23	+30	+30	+4	+0.3	+18	+0.6	-0.1	-0.1	+0.0	+0.0
Top 60%	+0.4	+2.0	+14	+22	+29	+28	+3	+0.2	+17	+0.6	-0.2	-0.3	-0.1	+0.0
Top 65%	+0.5	+2.2	+13	+21	+28	+27	+3	+0.2	+17	+0.5	-0.2	-0.4	-0.2	-0.1
Top 70%	+0.6	+2.3	+12	+20	+26	+25	+3	+0.2	+16	+0.4	-0.3	-0.5	-0.3	-0.1
Top 75%	+0.7	+2.5	+11	+19	+25	+23	+3	+0.1	+15	+0.3	-0.4	-0.6	-0.3	-0.2
Top 80%	+0.8	+2.7	+11	+17	+23	+21	+2	+0.0	+14	+0.2	-0.5	-0.8	-0.5	-0.2
Top 85%	+0.9	+3.0	+9	+16	+21	+19	+2	-0.1	+12	+0.1	-0.7	-0.9	-0.6	-0.3
Top 90%	+1.1	+3.4	+8	+13	+18	+15	+1	-0.2	+11	-0.1	-0.8	-1.1	-0.8	-0.4
Top 95%	+1.4	+3.8	+6	+10	+14	+10	+1	-0.4	+8	-0.3	-1.1	-1.5	-1.2	-0.5
Top 99%	+2.0	+4.7	+1	+4	+4	-3	-1	-0.7	+3	-0.7	-1.5	-2.0	-1.9	-0.8

UNDERSTANDING GENE TEST

The presence of two copies of the Red Gene will result in a Red coat colour. The results you will see for this gene are:

ED	Homozygous Dominant Black
ED / e	Dominant Black / Recessive Red
ED / E+	Dominant Black / Wildtype
E+ / e	Wildtype / Recessive Red
E+ / E+	Homozygous Wildtype
e / e	Homozygous Recessive Red

The presence of two copies of the Myostatin nt821 gene result in double muscling of an animal and cause health issues. The results you will see for this gene are:

nt821F	FREE	NO COPIES OF MYOSTATIN GENE
nt821C	CARRIER	One copy of Myostatin gene
nt821A	Affected	Two copies of Myostatin gene

The Polled gene is dominant to the recessive Horn gene. The presence of two copies of the horn gene (HH) will result in a horned animal. The results you will see for this gene are:

PcPc PcPf PfPf	Homozygous polled (PP) *Predominately Polled (occasional scurs)
HPc HPf	Heterozygous polled (HP) *Could be scurred
HH	Homozygous Horns (HH) *Horned
NR	Due failed test OR due to unresolved haplotype (combination of HornPoll markers fail to produce a valid result)

*Only HPc animals will show scurs and, this is more common in males than females. Not all HPc animals will have scurs.

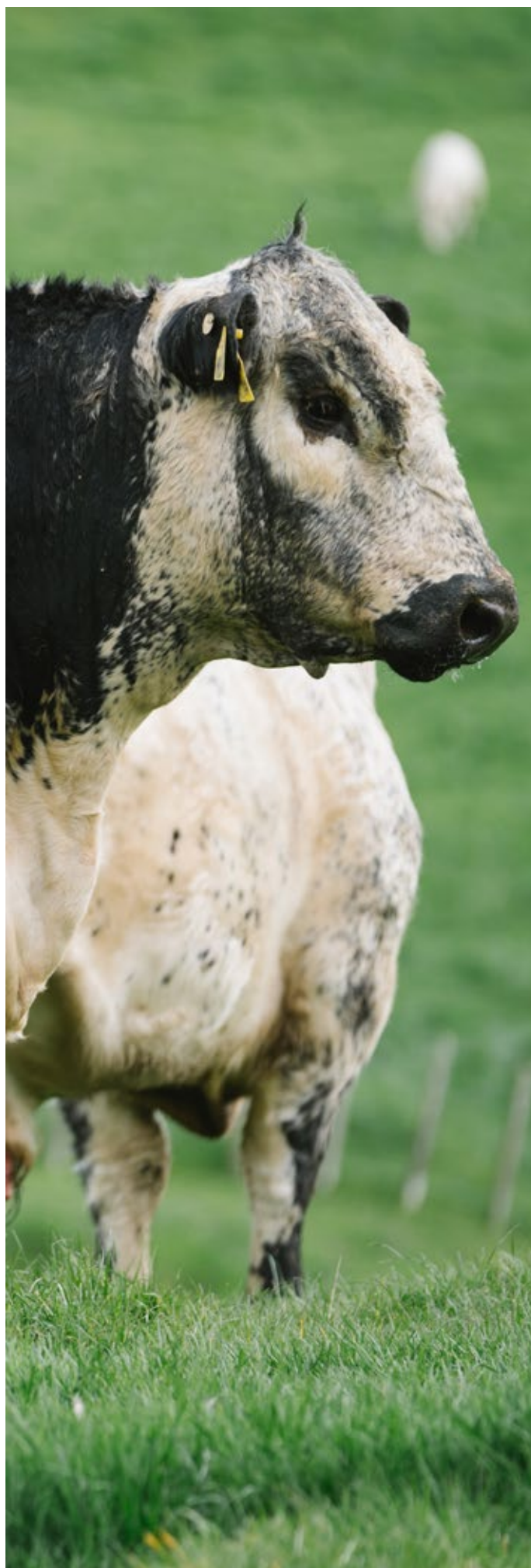
LEPTIN

Leptin is a hormone that regulates feed intake, energy expenditure and whole-body energy balance. A SNP in the Leptin gene has been associated with several economically important traits including milk production, weaning weight, back fat, marbling, quality grade, yield grade, dry matter intake, and days on feed.

Leptin is reported as TT, CT, CC. Associated with fat-metabolism and fat deposition, leaner cattle carry the 'C' allele while more marbled cattle carry the 'T' allele.

THERE ARE 3 LEPTIN VARIANTS:

- CC (lean) animals have less fat and therefore, are less economically favourable
- CT animals are economically intermediate
- TT (fat) animals have more fat and therefore, are more economically favourable





COVERING YOUR STUD STOCK NEEDS NATIONWIDE



CONTACT
OUR STUD STOCK TEAM
TO DISCUSS YOUR NEEDS

 CARRFIELDSLIVESTOCK.CO.NZ

Andrew Holt
Auctioneer
027 496 3311

Todd Wells
Stud Stock Agent
027 598 6537

Neville Clark
Auctioneer
027 598 6537

Robbie Kirkpatrick
Stud Stock Agent
027 587 0131

Unable to make the sale?

Buy online on bidr® in 3 easy steps:



Sign up at bidr.co.nz and add your agency account under account details.



Browse auctions to find livestock you are interested in buying.



Login and register for the real time online auction to bid for the livestock you wish to purchase.

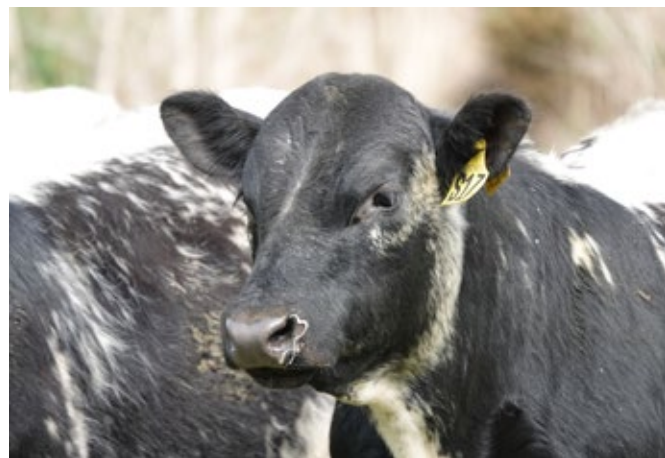
Why use bidr®?

- Free to sign up
- Nationwide reach
- Bid from anywhere
- View auctions and sales results
- Pay for your purchases through your livestock agency account

Our partner agencies:



THE FARM



Speckle Park



Ref

PREMIER 101Y LOGIC L11

ID: PMR L11

Colour: Leopard

DOB: 9/08/15



- ♂ STAR BANK KING GEORGE 82U (P) (SPECKLED)
- ♂ SIX STAR 82U ROYAL FLESH 101Y (AI) (ET) (P) (SPECKLED)
- ♀ STAR BANK 53R (P) (WHITE)

PREMIER 101Y LOGIC L11

- ♂ MAINSTREAM ELDORADO E11 (ET) (P) (WHITE)
- ♀ SPKNZ H2 (P) (WHITE)
- ♀ SPKNZ E36 (ET) (P) (SPECKLED)

As quoted by a long time professional in the stud industry 'one of the best bulls of any breed in NZ in 2017' Logic has not disappointed. His impeccable foot and leg structure and added frame has seen him have a positive influence on programs around the world. A trait leader for growth he consistently sires bulls with performance and beautiful daughters with long clean front quarters, great udder shape and milk flow while maintaining optimum muscle for a female. His dam SPKNZ H2 continues to influence our program with many outstanding daughters.

SEPTEMBER 2022 SPECKLE PARK BREEDPLAN

	GL	BW	200	400	600	MCW	MILK	SS	CW	EMA	RIB	RUMP	RBV	IMF
EBVs	-0.6	+5.3	+35	+55	+67	+69	+4	+0.2	+39	+1.2	-0.5	-0.8	+0.6	+0.1
Accuracy	73%	94%	91%	90%	87%	72%	61%	81%	77%	60%	72%	72%	70%	67%

GENETIC PROFILE

Poll/Horn	PCPC
Coat	ED/ED
Myostatin	Non Carrier (Free)
Leptin	C/T

Ref

UPTO SPECS ULYSSES 25U

ID: MBG 25U

Colour: Speckled

DOB: 19/06/08



- ♂ SPRUCE LANE VENTURE 3J (SPECKLED)
 - ♂ RAVEN MEADOWS MAGNUM 10N (SPECKLED)
 - ♀ PARKLAND SPECKLE PARK 10J (SPECKLED)
- UPTO SPECS ULYSSES 25U**
- ♂ THUNDER 1C (SPECKLED)
 - ♀ PRAIRIE HILL REBA 154F (SPECKLED)
 - ♀ SPOTS 'N SPROUTS 1D (WHITE)

Ulysses was selected after we viewed him at 9 years old. The sound feet and leg structure and easy fleshing would be an asset to any beef operation. His longevity made him a 'must-have' sire.

SEPTEMBER 2022 SPECKLE PARK BREEDPLAN

	GL	BW	200	400	600	MCW	MILK	SS	CW	EMA	RIB	RUMP	RBY	IMF
EBVs	+2.3	+4.2	+20	+30	+36	+35	-2	+1.0	+17	+0.9	+0.4	+0.5	-0.4	+0.2
Accuracy	73%	96%	92%	91%	91%	79%	59%	86%	80%	67%	78%	78%	76%	72%

GENETIC PROFILE

Poll/Horn	
Coat	
Myostatin	
Leptin	

Ref

MAUNGAHINA NEON

ID: MAU N306

Colour: White

DOB: 27/09/17



- ♂ SPOTS 'N SPROUTS STANDS ALONE (P) (WHITE)
 - ♂ MAUNGAHINA LEGACY (AI) (ET) (LEOPARD)
 - ♀ SPKNZ SPN H20 (ET) (P) (SPECKLED)
- MAUNGAHINA NEON**
- ♂ HWY. 4 SPECKLE PARK 2H (SPECKLED)
 - ♀ MAINSTREAM E12 (ET) (P) (SPECKLED)
 - ♀ NOTTA PHO-FINISH 54P (SPECKLED)

Neon was selected on phenotype & pedigree. Super correct structure, a front quarter that we knew would allow him to be used as a heifer bull, combined with outstanding locomotion NEON was an easy choice to add to the Premier sire group when we weren't really looking for a bull. His pedigree... and the individuals in it... backed up his herd sire traits, a genetic mix of low birth weight, high performance growth, positive carcass traits and maternal power. Neon is siring wide based calves with deep flanks and width through the top.

SEPTEMBER 2022 SPECKLE PARK BREEDPLAN

	GL	BW	200	400	600	MCW	MILK	SS	CW	EMA	RIB	RUMP	RBY	IMF
EBVs	+0.5	+1.7	+14	+26	+32	+30	+6	+0.9	+20	+0.3	-0.6	-0.8	+0.3	+0.0
Accuracy	61%	83%	83%	80%	78%	65%	51%	71%	69%	52%	62%	62%	60%	57%

GENETIC PROFILE

Poll/Horn	PCPC
Coat	ED/e
Myostatin	Carrier
Leptin	

Ref

JAD NAPOLEON N31

ID: JAD N31

Colour: White

DOB: 13/10/17



- ♂ RIVER HILL 26T WALKER 60W (P) (SPECKLED)
 - ♂ RIVER HILL 60W LINE DRIVE 54Z (AI) (LEOPARD)
 - ♀ NOTTA PHO-FINISH 54P (SPECKLED)
- JAD NAPOLEON N31**
- ♂ CODIAK OSCAR GNK 8S (P) (LEOPARD)
 - ♀ CODIAK ACRES BELINDA 66A (SPECKLED)
 - ♀ UPTO SPECS TORI 10T (P) (LEOPARD)

The top selling bull at the JAD sale in Australia at \$24,000. Napoleon brings an outcross to our program in his dam, Codiak Belinda 66A is a tremendous cow who has bred well. Breed average for birth with positive fats and high milk Napoleon is working very well in our program, siring calves that are easily born and are performing very well on their 2-year-old dams.

SEPTEMBER 2022 SPECKLE PARK BREEDPLAN

	GL	BW	200	400	600	MCW	MILK	SS	CW	EMA	RIB	RUMP	RBY	IMF
EBVs	+0.5	+1.4	+13	+26	+38	+42	+8	-0.1	+24	+1.4	+0.7	+0.9	-0.1	+0.1
Accuracy	66%	89%	85%	83%	81%	69%	51%	77%	72%	57%	66%	66%	63%	58%

GENETIC PROFILE

Poll/Horn	HPC
Coat	ED/ED
Myostatin	Non Carrier (Free)
Leptin	



1

PREMIER L11 LOGIC S21

ID: PMR S21

Colour: Leopard

DOB: 20/08/21

♂ SIX STAR 82U ROYAL FLESH 101Y (AI) (ET) (P) (SPECKLED)

♂ PREMIER 101Y LOGIC L11 (AI) (ET) (LEOPARD)

♀ SPKNZ H2 (P) (WHITE)

PREMIER L11 LOGIC S21

♂ CODIAK OH MY GOSH GNK 60A (LEOPARD)

♀ PREMIER 60A MOLLY N11 (AI) (ET) (P) (LEOPARD)

♀ PREMIER 300X MOLLY L3 (AI) (ET) (WHITE)

RAW DATA

Birth Weight	25/01/2022 Weight	29/08/2022 Weight
41 kgs.	242 kgs.	408 kgs.

Top 5% 200, 400, 600 day. 20% Gestation.

Logic S21 is a stout made carcass bull with plenty of volume. A leptin TT bull, his dam is big volume, high milk cow that is performing at the top year on year.

SEPTEMBER 2022 SPECKLE PARK BREEDPLAN

	GL	BW	200	400	600	MCW	MILK	SS	CW	EMA	RIB	RUMP	RBY	IMF
EBVs	-0.6	+5.0	+37	+49	+64	+64	+4	+0.0	+36	+0.9	-0.8	-1.1	+0.7	-0.1
Accuracy	50%	74%	70%	69%	65%	52%	43%	52%	57%	40%	47%	47%	45%	43%

GENETIC PROFILE

Poll/Horn	PCPC
Coat	ED/ED
Myostatin	Carrier
Leptin	T/T

PURCHASER

PRICE



2

PREMIER L11 GENTLEMAN JACK S40

ID: PMR S40

Colour: Leopard

DOB: 3/09/21

♂ SIX STAR 82U ROYAL FLESH 101Y (AI) (ET) (P) (SPECKLED)

♂ PREMIER 101Y LOGIC L11 (AI) (ET) (LEOPARD)

♀ SPKNZ H2 (P) (WHITE)

PREMIER L11 GENTLEMAN JACK S40

♂ LEGACY TURNPIKE CRUISER 27T (P) (LEOPARD)

♀ MOOVIN ZPOTZ ZEVA 28Z (P) (LEOPARD)

♀ D.L.R. LILY 17S (P) (LEOPARD)

RAW DATA

Birth Weight	25/01/2022 Weight	29/08/2022 Weight
39 kgs.	296 kgs.	429 kgs.

Top 10% 200, 400 600 day. 30% Gestation.

S40 will put growth in your program, long bodied with an extra dimension of frame and plenty of carcase. A full brother to the high selling calf in The Power of Premier Sale his dam and grandam were standout cows I selected in Canada.

SEPTEMBER 2022 SPECKLE PARK BREEDPLAN

	GL	BW	200	400	600	MCW	MILK	SS	CW	EMA	RIB	RUMP	RBY	IMF
EBVs	-0.3	+3.5	+25	+37	+47	+48	+4	+0.4	+26	+0.5	-0.4	-0.5	+0.2	+0.1
Accuracy	40%	52%	50%	49%	48%	39%	32%	44%	42%	32%	39%	39%	37%	36%

GENETIC PROFILE

Poll/Horn	PCPC
Coat	ED/ED
Myostatin	Non Carrier (Free)
Leptin	C/C

PURCHASER

PRICE

PREMIER
— CATTLE CO. —

Premier Cattle Co. 11



3

PREMIER N31 JEFFERSON S3

ID: PMR S3

Colour: Leopard

DOB: 14/02/21

♂ RIVER HILL 60W LINE DRIVE 54Z (AI) (LEOPARD)

♂ JAD NAPOLEON N31 (AI) (ET) (P) (WHITE)

♀ CODIAK ACRES BELINDA 66A (SPECKLED)

PREMIER N31 JEFFERSON S3

♂ SPKNZ EXTREME E27 (ET) (P) (WHITE)

♀ SPKNZ SPN H20 (ET) (P) (SPECKLED)

♀ SPKNZ E3 (ET) (P) (WHITE)

RAW DATA

Birth Weight	14/07/2022 Weight	29/08/2022 Weight
39 kgs.	279 kgs.	665 kgs.

Top 5% 200, 400, 600 day, Milk. 20% EMA, Scrotal. 25% Gestation.

Jefferson S3 continues to improve as we head into sale day, a well structured performance bull with a dataset to match his widely proven pedigree. We are very impressed with our Napoleon progeny, great softness and easy keeping combined with a great cow in H20, Jefferson is a maternal brother to Premier L11 Molly Q28 (high selling female The Power of Premier Sale) & Maungahina Legacy. Stud sire potential.

SEPTEMBER 2022 SPECKLE PARK BREEDPLAN

	GL	BW	200	400	600	MCW	MILK	SS	CW	EMA	RIB	RUMP	RBV	IMF
EBVs	-0.5	+3.1	+29	+45	+57	+58	+8	+0.7	+37	+1.3	-0.5	-0.8	+0.8	-0.2
Accuracy	46%	62%	59%	58%	57%	49%	44%	52%	51%	41%	48%	48%	46%	43%

GENETIC PROFILE

Poll/Horn	HPC
Coat	ED/ED
Myostatin	Non Carrier (Free)
Leptin	C/T

PURCHASER

PRICE



4

PREMIER 25U CROWN ROYAL S2

ID: PMR S2

Colour: Speckled

DOB: 9/02/21

♂ RAVEN MEADOWS MAGNUM 10N (SPECKLED)

♂ UPTO SPECS ULYSSES 25U (P) (SPECKLED)

♀ PRAIRIE HILL REBA 154F (SPECKLED)

PREMIER 25U CROWN ROYAL S2

♂ SPOTS 'N SPROUTS STANDS ALONE (P) (WHITE)

♀ PREMIER 300X LASS L4 (AI) (ET) (SPECKLED)

♀ SPKNZ SPN H22 (ET) (P) (WHITE)

RAW DATA

Birth Weight	14/07/2022 Weight	29/08/2022 Weight
37 kgs.	293 kgs.	692 kgs.

Top 10% 200, 400, 600 day, EMA. 25% IMF

Stud sire potential, Crown Royal is the real deal! Tremendously well balanced bull, great structure and mobility. I have given very serious consideration to retaining S2 for our program but equally are very excited to have him in the catalogue. His dam is one our very best breeding cows in Lass L4, she typifies today's modern beef female, 'maternal, powerful, functional'. He is sired by Ulysses a bull we first viewed as a super sound 9 year old.

SEPTEMBER 2022 SPECKLE PARK BREEDPLAN

	GL	BW	200	400	600	MCW	MILK	SS	CW	EMA	RIB	RUMP	RBY	IMF
EBVs	+1.1	+3.3	+22	+38	+48	+49	+2	+0.7	+29	+1.5	-0.2	-0.3	+0.3	+0.3
Accuracy	49%	64%	62%	61%	61%	53%	45%	55%	54%	45%	54%	54%	52%	49%

GENETIC PROFILE

Poll/Horn	PCPC
Coat	ED/ED
Myostatin	Non Carrier (Free)
Leptin	C/T

PURCHASER

PRICE



5

PREMIER L11 LOGIC S9

ID: PMR S9

Colour: White

DOB: 27/03/21

♂ SIX STAR 82U ROYAL FLESH 101Y (AI) (ET) (P) (SPECKLED)

♂ PREMIER 101Y LOGIC L11 (AI) (ET) (LEOPARD)

♀ SPKNZ H2 (P) (WHITE)

PREMIER L11 LOGIC S9

♂ SPKNZ FALCON (AI) (ET) (P) (SPECKLED)

♀ PREMIER F20 CINDER L7 (AI) (ET) (SPECKLED)

♀ SPN H1 (AI) (ET) (P) (WHITE)

RAW DATA

Birth Weight	14/07/2022 Weight	29/08/2022 Weight
39 kgs.	239 kgs.	608 kgs.

Top 10% 200, 400, 600 day. 25% IMF.

Long bodied, wide topped Logic son from a reliable Falcon cow.

SEPTEMBER 2022 SPECKLE PARK BREEDPLAN

	GL	BW	200	400	600	MCW	MILK	SS	CW	EMA	RIB	RUMP	RBY	IMF
EBVs	+0.0	+3.4	+24	+39	+50	+51	+4	+0.3	+30	+0.9	-0.4	-0.7	+0.4	+0.3
Accuracy	49%	71%	67%	66%	64%	52%	43%	49%	55%	39%	49%	49%	47%	44%

GENETIC PROFILE

Poll/Horn	PCPC
Coat	ED/ED
Myostatin	Non Carrier (Free)
Leptin	C/T

PURCHASER

PRICE



6

PREMIER L11 HIGH WEST S39

ID: PMR S39

Colour: White

DOB: 3/09/21

♂ SIX STAR 82U ROYAL FLESH 101Y (AI) (ET) (P) (SPECKLED)

♂ PREMIER 101Y LOGIC L11 (AI) (ET) (LEOPARD)

♀ SPKNZ H2 (P) (WHITE)

PREMIER L11 HIGH WEST S39

♂ MOOVIN ZPOTZ ZIFF 14Z (P) (SPECKLED)

♀ MOOVIN ZPOTZ CHERRY 73C (P) (SPECKLED)

♀ MOOVIN ZPOTZ PORSCHE 30X (P) (SPECKLED)

RAW DATA

Birth Weight	25/01/2022 Weight	29/08/2022 Weight
37 kgs.	244 kgs.	424 kgs.

Top 10% 200, 400 day.

A long fronted Logic son with volume and great fertility traits. His dam is a very functional and respected cow in the Moovin Zpotz program.

SEPTEMBER 2022 SPECKLE PARK BREEDPLAN

	GL	BW	200	400	600	MCW	MILK	SS	CW	EMA	RIB	RUMP	RBY	IMF
EBVs	-0.2	+3.4	+24	+35	+44	+45	+4	+0.3	+25	+0.7	-0.3	-0.5	+0.3	+0.0
Accuracy	38%	50%	48%	47%	46%	38%	31%	42%	40%	31%	37%	37%	36%	34%

GENETIC PROFILE

Poll/Horn	PCPC
Coat	ED/ED
Myostatin	Non Carrier (Free)
Leptin	C/T

PURCHASER

PRICE



7

PREMIER N31 RITTENHOUSE S17

ID: PMR S17

Colour: Speckled

DOB: 13/08/21

♂ RIVER HILL 60W LINE DRIVE 54Z (AI) (LEOPARD)

♂ JAD NAPOLEON N31 (AI) (ET) (P) (WHITE)

♀ CODIAK ACRES BELINDA 66A (SPECKLED)

PREMIER N31 RITTENHOUSE S17

♂ CODIAK PUTNAM GNK 61Y (P) (LEOPARD)

♀ PREMIER 61Y UNIQUE N38 (AI) (ET) (P) (SPECKLED)

♀ CODIAK AMANDA GNK 42Y (P) (SPECKLED)

RAW DATA

Birth Weight	25/01/2022 Weight	29/08/2022 Weight
36 kgs.	197 kgs.	406 kgs.

Top 10% Milk, Rib & Rump Fat. 30% Birth Weight.

Rittenhouse S17 is an extremely easy keeping bull. Clean fronted, well structured from the cow that produced last years high seller Premier N306 Magnus R4.

SEPTEMBER 2022 SPECKLE PARK BREEDPLAN

	GL	BW	200	400	600	MCW	MILK	SS	CW	EMA	RIB	RUMP	RBY	IMF
EBVs	+0.5	+1.2	+9	+27	+36	+44	+6	+0.0	+22	+0.5	+0.8	+1.0	-0.6	+0.2
Accuracy	51%	75%	71%	69%	66%	54%	42%	53%	57%	41%	46%	46%	45%	42%

GENETIC PROFILE

Poll/Horn	HPC
Coat	ED/ED
Myostatin	Non Carrier (Free)
Leptin	C/C

PURCHASER

PRICE



8

PREMIER L11 MAKERS MARK S14

ID: PMR S14

Colour: Speckled

DOB: 9/08/21

♂ SIX STAR 82U ROYAL FLESH 101Y (AI) (ET) (P) (SPECKLED)

♂ PREMIER 101Y LOGIC L11 (AI) (ET) (LEOPARD)

♀ SPKNZ H2 (P) (WHITE)

PREMIER L11 MAKERS MARK S14

♂ SPKNZ FALCON (AI) (ET) (P) (SPECKLED)

♀ PREMIER F20 MOLLY L19 (SPECKLED)

♀ SPKNZ SPN H20 (ET) (P) (SPECKLED)

RAW DATA

Birth Weight	25/01/2022 Weight	29/08/2022 Weight
37 kgs.	257 kgs.	436 kgs.

**Top 5% 200, 400, 600 day. 10% Milk.
20% Gestation. 25% EMA & IMF.**

Great structure, balance with outstanding thickness Makers Mark is a Leptin TT bull with a powerful dataset that reflects the genetics in his pedigree. His dam is fast becoming one of the top cows in our program. Has small scurs.

SEPTEMBER 2022 SPECKLE PARK BREEDPLAN

	GL	BW	200	400	600	MCW	MILK	SS	CW	EMA	RIB	RUMP	RBV	IMF
EBVs	-0.7	+3.5	+31	+47	+58	+60	+6	+0.4	+38	+1.1	-0.3	-0.5	+0.4	+0.3
Accuracy	51%	75%	71%	70%	67%	54%	44%	51%	58%	40%	49%	49%	47%	44%

GENETIC PROFILE

Poll/Horn	HPC
Coat	ED/ED
Myostatin	Carrier
Leptin	T/T

PURCHASER

PRICE



9

PREMIER L11 TEMPLTON S35

ID: PMR S35

Colour: Leopard

DOB: 30/08/21

♂ SIX STAR 82U ROYAL FLESH 101Y (AI) (ET) (P) (SPECKLED)

♂ PREMIER 101Y LOGIC L11 (AI) (ET) (LEOPARD)

♀ SPKNZ H2 (P) (WHITE)

PREMIER L11 TEMPLTON S35

♂ LEGACY TURNPIKE CRUISER 27T (P) (LEOPARD)

♀ MOOVIN ZPOTZ ZEVA 28Z (P) (LEOPARD)

♀ D.L.R. LILY 17S (P) (LEOPARD)

RAW DATA

Birth Weight	25/01/2022 Weight	29/08/2022 Weight
38 kgs.	240 kgs.	410 kgs.

Top 10% 200, 400, 600 day. 30% Gestation.

Smooth fronted and long through the body Templeton S35 is great structured son of one of the best cows in the Moovin Zpotz program.

SEPTEMBER 2022 SPECKLE PARK BREEDPLAN

	GL	BW	200	400	600	MCW	MILK	SS	CW	EMA	RIB	RUMP	RBY	IMF
EBVs	-0.3	+3.5	+25	+37	+47	+48	+4	+0.4	+26	+0.5	-0.4	-0.5	+0.2	+0.1
Accuracy	40%	52%	50%	49%	48%	39%	32%	44%	42%	32%	39%	39%	37%	36%

GENETIC PROFILE

Poll/Horn	PCPC
Coat	ED/ED
Myostatin	Non Carrier (Free)
Leptin	C/C

PURCHASER

PRICE



10

PREMIER N31 BULLEIT S20

ID: PMR S20

Colour: White

DOB: 16/08/21

♂ RIVER HILL 60W LINE DRIVE 54Z (AI) (LEOP-ARD)

♂ JAD NAPOLEON N31 (AI) (ET) (P) (WHITE)

♀ CODIAK ACRES BELINDA 66A (SPECKLED)

PREMIER N31 BULLEIT S20

♂ MAUNGAHINA LORD STARS (WHITE)

♀ PREMIER L265 DREAM Q18 (ET) (P) (WHITE)

♀ SPKNZ SPN H36 (ET) (P) (SPECKLED)

RAW DATA

Birth Weight	25/01/2022 Weight	29/08/2022 Weight
35 kgs.	213 kgs.	333 kgs.

Top 5% Milk. 25% Birth Weight, Rib & Rump Fat.

A real heifer mating bull, Bulliet is a smooth fronted moderate framed bull. being white he will colour mark his progeny.

SEPTEMBER 2022 SPECKLE PARK BREEDPLAN

	GL	BW	200	400	600	MCW	MILK	SS	CW	EMA	RIB	RUMP	RBY	IMF
EBVs	+0.5	+1.1	+11	+13	+19	+16	+8	+0.0	+10	+0.4	+0.6	+0.7	-0.4	+0.2
Accuracy	43%	64%	69%	68%	64%	51%	37%	47%	56%	37%	46%	46%	44%	40%

GENETIC PROFILE

Poll/Horn	PCPC
Coat	ED/ED
Myostatin	Non Carrier (Free)
Leptin	C/C

PURCHASER

PRICE



11

PREMIER L11 HUDSON S51

ID: PMR S51

Colour: Speckled

DOB: 19/09/21

♂ SIX STAR 82U ROYAL FLESH 101Y (AI) (ET) (P) (SPECKLED)

♂ PREMIER 101Y LOGIC L11 (AI) (ET) (LEOPARD)

♀ SPKNZ H2 (P) (WHITE)

PREMIER L11 HUDSON S51

♂ RIVER HILL TRAFFIC JAM 26T (P) (SPECKLED)

♀ RIVER HILL 26T SHOW ME Y 60Y (P) (BLACK)

♀ RIVER HILL SHOW ME OFF 60S (P) (SPECKLED)

RAW DATA

Birth Weight	25/01/2022 Weight	29/08/2022 Weight
38 kgs.	246 kgs.	438 kgs.

Top 10% 200, 400, 600 day. 15% EMA. 30% Gestation.

Hudson's dam is a full sister to the breed great in Riverhill 26T Walker. Note the birth date of this long bodied, big volume bull will add growth to his progeny and when used over black cow will produce a large percentage of black calves.

SEPTEMBER 2022 SPECKLE PARK BREEDPLAN

	GL	BW	200	400	600	MCW	MILK	SS	CW	EMA	RIB	RUMP	RBV	IMF
EBVs	-0.3	+3.0	+24	+39	+47	+41	+5	+0.0	+29	+1.3	-0.8	-1.2	+0.7	+0.0
Accuracy	47%	60%	58%	58%	56%	48%	40%	52%	50%	39%	47%	47%	45%	44%

GENETIC PROFILE

Poll/Horn	PCPC
Coat	ED/ED
Myostatin	Non Carrier (Free)
Leptin	C/T

PURCHASER

PRICE



12

PREMIER L11 WOODFORD S27

ID: PMR S27

Colour: Speckled

DOB: 24/08/21

♂ SIX STAR 82U ROYAL FLESH 101Y (AI) (ET) (P) (SPECKLED)

♂ PREMIER 101Y LOGIC L11 (AI) (ET) (LEOPARD)

♀ SPKNZ H2 (P) (WHITE)

PREMIER L11 WOODFORD S27

♂ MOOVIN ZPOTZ CAMARO 6X (LEOPARD)

♀ MOOVIN ZPOTZ ALISON 36A (P) (SPECKLED)

♀ D.L.R. ZAURE 39T (P) (BLACK)

RAW DATA

Birth Weight	25/01/2022 Weight	29/08/2022 Weight
38 kgs.	276 kgs.	440 kgs.

Top 10% 200, 400, 600 day. 25% Gestation.

Woodford is a long bodied bull with the added growth I want to see in our breed. His dam is very functional beef cow, moderate framed, wedge shaped and productive. A bull that will add some performance to his calves.

SEPTEMBER 2022 SPECKLE PARK BREEDPLAN

	GL	BW	200	400	600	MCW	MILK	SS	CW	EMA	RIB	RUMP	RBV	IMF
EBVs	-0.4	+3.6	+25	+38	+47	+48	+4	+0.3	+26	+0.6	-0.4	-0.6	+0.2	+0.1
Accuracy	39%	53%	50%	49%	48%	39%	32%	43%	41%	32%	39%	38%	37%	36%

GENETIC PROFILE

Poll/Horn	PCPC
Coat	ED/ED
Myostatin	Non Carrier (Free)
Leptin	C/T

PURCHASER

PRICE



13

PREMIER L11 RESTORATION S52

ID: PMR S52

Colour: Leopard

DOB: 23/09/21

♂ SIX STAR 82U ROYAL FLESH 101Y (AI) (ET) (P) (SPECKLED)

♂ PREMIER 101Y LOGIC L11 (AI) (ET) (LEOPARD)

♀ SPKNZ H2 (P) (WHITE)

PREMIER L11 RESTORATION S52

♂ SPOTS 'N SPROUTS STANDS ALONE (P) (WHITE)

♀ PREMIER 300X MOLLY L3 (AI) (ET) (WHITE)

♀ SPKNZ SPN H20 (ET) (P) (SPECKLED)

RAW DATA

Birth Weight	25/01/2022 Weight	29/08/2022 Weight
40 kgs.	190 kgs.	418 kgs.

Top 5% 200, 400, 600 day. 10% EMA. 20% Gestation & Scrotal.

Restoration is the youngest bull in the sale draft and the last natural calf of Molly L3. A Leptin TT bull S52 is the #1 2021 born bull in the breed for growth.

SEPTEMBER 2022 SPECKLE PARK BREEDPLAN

	GL	BW	200	400	600	MCW	MILK	SS	CW	EMA	RIB	RUMP	RBY	IMF
EBVs	-0.7	+5.1	+41	+63	+78	+81	+5	+0.7	+49	+1.6	-1.6	-2.2	+1.6	-0.3
Accuracy	49%	66%	67%	70%	66%	54%	46%	55%	60%	43%	52%	52%	50%	48%

GENETIC PROFILE

Poll/Horn	PCPC
Coat	ED/ED
Myostatin	Carrier
Leptin	T/T

PURCHASER

PRICE



14

PREMIER N306 NEON S38

ID: PMR S38

Colour: Speckled

DOB: 2/09/21

♂ SIX STAR 82U ROYAL FLESH 101Y (AI) (ET) (P) (SPECKLED)

♂ PREMIER 101Y LOGIC L11 (AI) (ET) (LEOPARD)

♀ SPKNZ H2 (P) (WHITE)

PREMIER N306 NEON S38

♂ PREMIER E11 GUNSMOKE M3 (AI) (P) (WHITE)

♀ PREMIER M3 MELISA P31 (P) (SPECKLED)

♀ PREMIER E25 MELISA K249 (LEOPARD)

RAW DATA

Birth Weight	25/01/2022 Weight	29/08/2022 Weight
37 kgs.	209 kgs.	378 kgs.

Top 5% 200, 400, 600 day. 20% Gestation. 25% IMF.

Neon S38 is really going ahead as we head to sale day. His dam is a very hard working young cow.

SEPTEMBER 2022 SPECKLE PARK BREEDPLAN

	GL	BW	200	400	600	MCW	MILK	SS	CW	EMA	RIB	RUMP	RBY	IMF
EBVs	-0.7	+3.6	+29	+44	+55	+54	+5	+0.1	+33	+1.0	-0.3	-0.5	+0.3	+0.3
Accuracy	49%	75%	71%	70%	65%	51%	40%	49%	57%	38%	48%	48%	46%	43%

GENETIC PROFILE

Poll/Horn	PCPC
Coat	ED/ED
Myostatin	Non Carrier (Free)
Leptin	C/T

PURCHASER

PRICE



15

PREMIER L11 LOGIC S44

ID: PMR S44

Colour: Leopard

DOB: 10/09/21

♂ SIX STAR 82U ROYAL FLESH 101Y (AI) (ET) (P) (SPECKLED)

♂ PREMIER 101Y LOGIC L11 (AI) (ET) (LEOPARD)

♀ SPKNZ H2 (P) (WHITE)

PREMIER L11 LOGIC S44

♂ CODIAK OH MY GOSH GNK 60A (LEOPARD)

♀ PREMIER OH MY MOLLY N6 (AI) (ET) (P) (LEOPARD)

♀ SPKNZ SPN H20 (ET) (P) (SPECKLED)

RAW DATA

Birth Weight	25/01/2022 Weight	29/08/2022 Weight
36 kgs.	215 kgs.	394 kgs.

Top 5% 200, 400, 600 day. 10% Gestation.

Soft doing, wide based bull from the well proven Molly family.

SEPTEMBER 2022 SPECKLE PARK BREEDPLAN

	GL	BW	200	400	600	MCW	MILK	SS	CW	EMA	RIB	RUMP	RBY	IMF
EBVs	-1.3	+3.3	+31	+46	+55	+53	+4	+0.0	+34	+0.7	-0.6	-0.8	+0.5	-0.1
Accuracy	51%	75%	71%	70%	67%	54%	44%	51%	58%	40%	50%	50%	48%	45%

GENETIC PROFILE

Poll/Horn	PCPC
Coat	ED/ED
Myostatin	Non Carrier (Free)
Leptin	C/T

PURCHASER

PRICE



16

PREMIER L11 LOGIC S33

ID: PMR S33

Colour: Leopard

DOB: 29/08/21

♂ SIX STAR 82U ROYAL FLESH 101Y (AI) (ET) (P) (SPECKLED)

♂ PREMIER 101Y LOGIC L11 (AI) (ET) (LEOPARD)

♀ SPKNZ H2 (P) (WHITE)

PREMIER L11 LOGIC S33

♂ MOOVIN ZPOTZ FALCON 3X (LEOPARD)

♀ PREMIER 3X OLLIE N25 (AI) (ET) (P) (SPECKLED)

♀ CODIAK OLLIE GNK 1X (SPECKLED)

RAW DATA

Birth Weight	25/01/2022 Weight	29/08/2022 Weight
41 kgs.	181 kgs.	374 kgs.

Top 25% 600 day, EMA & IMF.

Logic S33 is a smooth fronted bull, correct in his structure with great width through his hindquarter.

SEPTEMBER 2022 SPECKLE PARK BREEDPLAN

	GL	BW	200	400	600	MCW	MILK	SS	CW	EMA	RIB	RUMP	RBV	IMF
EBVs	+1.0	+3.9	+18	+29	+40	+38	+5	-0.1	+20	+1.1	-0.3	-0.4	+0.5	-0.1
Accuracy	49%	74%	71%	69%	66%	52%	40%	49%	56%	37%	47%	47%	45%	42%

GENETIC PROFILE

Poll/Horn	PCPC
Coat	ED/ED
Myostatin	Carrier
Leptin	C/T

PURCHASER

PRICE



17

PREMIER N306 NEON S42

ID: PMR S42

Colour: Speckled

DOB: 5/09/21

- ♂ MAUNGAHINA LEGACY (AI) (ET) (LEOPARD)
- ♂ MAUNGAHINA NEON (P) (WHITE)
- ♀ MAINSTREAM E12 (ET) (P) (SPECKLED)

PREMIER N306 NEON S42

- ♂ SIX STAR 82U ROYAL FLESH 101Y (AI) (ET) (P) (SPECKLED)
- ♀ PREMIER 101Y NICE LADY P4 (AI) (ET) (P) (LEOPARD)
- ♀ SPKNZ E34 (ET) (P) (WHITE)

RAW DATA		
Birth Weight	25/01/2022 Weight	29/08/2022 Weight
37 kgs.	174 kgs.	330 kgs.

Top 20% Scrotal. 25% 400 day.

A smooth fronted, deep ribbed young sire from the E34 family that consistently produces low birth weight calves.

SEPTEMBER 2022 SPECKLE PARK BREEDPLAN														
	GL	BW	200	400	600	MCW	MILK	SS	CW	EMA	RIB	RUMP	RBY	IMF
EBVs	+0.6	+2.6	+18	+30	+39	+40	+1	+0.7	+24	+0.6	-0.6	-0.9	+0.5	+0.1
Accuracy	48%	74%	70%	69%	65%	52%	42%	48%	56%	39%	47%	47%	45%	43%

GENETIC PROFILE	
Poll/Horn	PCPC
Coat	ED/e
Myostatin	Non Carrier (Free)
Leptin	C/C

PURCHASER

PRICE



18

PREMIER L11 JAMESON S24

ID: PMR S24

Colour: Leopard

DOB: 22/08/21

♂ SIX STAR 82U ROYAL FLESH 101Y (AI) (ET) (P) (SPECKLED)

♂ PREMIER 101Y LOGIC L11 (AI) (ET) (LEOPARD)

♀ SPKNZ H2 (P) (WHITE)

PREMIER L11 JAMESON S24

♂ SPOTS 'N SPROUTS STANDS ALONE (P) (WHITE)

♀ PREMIER 300X LADY L2 (AI) (ET) (LEOPARD)

♀ SPKNZ SPN H14 (ET) (P) (SPECKLED)

RAW DATA

Birth Weight	25/01/2022 Weight	29/08/2022 Weight
37 kgs.	230 kgs.	444 kgs.

Top 10% 200, 400, 600 day & EMA. 30% Gestation.

Jameson S24 is a clean boned Logic son with an outstanding temperament. his dam is a herd favorite and daughter of the great SPKNZ H14 cow.

SEPTEMBER 2022 SPECKLE PARK BREEDPLAN

	GL	BW	200	400	600	MCW	MILK	SS	CW	EMA	RIB	RUMP	RBY	IMF
EBVs	-0.3	+3.4	+27	+49	+58	+59	+6	+0.3	+37	+1.4	-0.5	-0.8	+0.5	+0.2
Accuracy	52%	75%	72%	70%	67%	54%	46%	53%	59%	42%	51%	50%	49%	46%

GENETIC PROFILE

Poll/Horn	PCPC
Coat	ED/ED
Myostatin	Non Carrier (Free)
Leptin	C/T

PURCHASER

PRICE



19

PREMIER L11 ROCKTOWN S37

ID: PMR S37

Colour: Leopard

DOB: 30/08/21

♂ SIX STAR 82U ROYAL FLESH 101Y (AI) (ET) (P) (SPECKLED)

♂ PREMIER 101Y LOGIC L11 (AI) (ET) (LEOPARD)

♀ SPKNZ H2 (P) (WHITE)

PREMIER L11 ROCKTOWN S37

♂ LEGACY TURNPIKE CRUISER 27T (P) (LEOPARD)

♀ MOOVIN ZPOTZ ZEVA 28Z (P) (LEOPARD)

♀ D.L.R. LILY 17S (P) (LEOPARD)

RAW DATA

Birth Weight	25/01/2022 Weight	29/08/2022 Weight
39 kgs.	263 kgs.	392 kgs.

Top 10% 200, 400, 600 day. 30% Gestation.

Long fronted Logic bull from the outstanding 28Z cow who will really come on by sale day.

SEPTEMBER 2022 SPECKLE PARK BREEDPLAN

	GL	BW	200	400	600	MCW	MILK	SS	CW	EMA	RIB	RUMP	RBV	IMF
EBVs	-0.3	+3.5	+25	+37	+47	+48	+4	+0.4	+26	+0.5	-0.4	-0.5	+0.2	+0.1
Accuracy	40%	52%	50%	49%	48%	39%	32%	44%	42%	32%	39%	39%	37%	36%

GENETIC PROFILE

Poll/Horn	PCPC
Coat	ED/ED
Myostatin	Non Carrier (Free)
Leptin	C/T

PURCHASER

PRICE



20

PREMIER L11 SAGAMORE S28

ID: PMR S28

Colour: White

DOB: 24/08/21

♂ SIX STAR 82U ROYAL FLESH 101Y (AI) (ET) (P)
(SPECKLED)

♂ PREMIER 101Y LOGIC L11 (AI) (ET) (LEOPARD)

♀ SPKNZ H2 (P) (WHITE)

PREMIER L11 SAGAMORE S28

♂ MOOVIN ZPOTZ CAMARO 6X (LEOPARD)

♀ MOOVIN ZPOTZ ALISON 36A (P) (SPECKLED)

♀ D.L.R. ZAURE 39T (P) (BLACK)

RAW DATA

Birth Weight	25/01/2022 Weight	29/08/2022 Weight
37 kgs.	248 kgs.	408 kgs.

Top 10% 200, 400, 600 day. 25% Gestation.

Good carcass bull from the ever reliable 36A cow.

SEPTEMBER 2022 SPECKLE PARK BREEDPLAN

	GL	BW	200	400	600	MCW	MILK	SS	CW	EMA	RIB	RUMP	RBY	IMF
EBVs	-0.4	+3.6	+25	+38	+47	+48	+4	+0.3	+26	+0.6	-0.4	-0.6	+0.2	+0.1
Accuracy	39%	53%	50%	49%	48%	39%	32%	43%	41%	32%	39%	38%	37%	36%

GENETIC PROFILE

Poll/Horn	PCPC
Coat	ED/ED
Myostatin	Non Carrier (Free)
Leptin	C/T

PURCHASER

PRICE



MURRAY GREY

It has long been our intention to add Murray Greys to our program, ultimately as we believe they are very much an underestimated breed. The carcass attributes, calving ease and efficient conversion of feed to a saleable product of the Murray Grey infused cattle is outstanding.

We also always knew that when we added the Murray Grey's to our program the foundation females would only come from one place, "Oakview". I have been fortunate to travel in a few different countries and seen many breed leading herds of various breeds and without doubt I would rate the Oakview herd up with the absolute best. A super consistent cow herd, full of powerful yet maternal brood cows who have had an influence on many herds around the country.

In early 2020 we agreed on the purchase of the complete line of 2018 born Oakview females already joined and on agistment at Premier we sure knew this line of heifers would make an enviable foundation group, however another consignment of females was to join this foundation group to ensure Premier would have access to all the high performing families in the Oakview herd, for this Catherine and I are extremely appreciative of the opportunity my parents allowed us.

Over the next year we will share some other exciting genetics that will further add to Premier program. As we grow the numbers of the cow herd we will be adopting our philosophy around the importance and value we see in our females to ensure quality is improved with every generation and that good bulls are simply a by-product of an outstanding cow herd.

Ref**OAKVIEW EMPEROR P7 (PB)**

ID: 0829180007

Colour: Silver

DOB: 08/08/18

AUGUST 2022 MURRAY GREY BREEDPLAN

	GL	BW	200	400	600	MCW	MILK	SS	CW	EMA	RIB	RUMP	RBV	IMF
EBVs	-1.0	+1.2	+15	+21	+31	+31	+0	+0.0	+21	+0.9	+0.2	+0.4	+0.3	+0.0
Accuracy	42%	64%	56%	53%	52%	42%	43%	31%	41%	28%	36%	36%	33%	31%



- ♂ SOUTHEND EMPEROR (PB)
- ♂ OAKVIEW S EMPEROR 301 (PB)
- ♀ OAKVIEW LUCINDA 7 (PB)
- OAKVIEW EMPEROR P7 (PB)**
- ♂ MICHAELONG ADVANCE C9 (IMP AUS) (PB)
- ♀ OAKVIEW ODETTE 11 (PB) (ET)
- ♀ MARIRE ODETTE W20 (PB)

Emperor P7 was selected for his tremendous carcass while still moving extremely well.

Ref**SOUTHEND EMPEROR (PB)**

ID: AUWMM149

Colour: Silver

DOB: 12/01/09

AUGUST 2022 MURRAY GREY BREEDPLAN

	GL	BW	200	400	600	MCW	MILK	SS	CW	EMA	RIB	RUMP	RBV	IMF
EBVs	-0.2	+4.0	+26	+38	+38	+33	-7	+0.3	+28	+1.5	+0.8	+1.0	+0.4	-0.3
Accuracy	79%	95%	92%	90%	89%	83%	80%	66%	80%	62%	73%	73%	69%	64%

- ♂ MELALEUCA YELLOWSTONE Y79 (PB)
- ♂ SOUTHEND BRAVEHEART (PB)
- ♀ SOUTHEND VANESSA (PB)
- SOUTHEND EMPEROR (PB)**
- ♂ ONDIONG JAMIESON (PB)
- ♀ SOUTHEND B-GREYGOWN (PB)
- ♀ SOUTHEND X-GREYGOWN (PB)

Owned by Oakview. Emperor was purchased from an outstanding program in Australia, he has bred extremely well.

Ref**WOODBOURN CHANOOKA D84 (IMP AUS) (PB)**

ID: AU4WD84

Colour: Silver

DOB: 09/09/08

AUGUST 2022 MURRAY GREY BREEDPLAN

	GL	BW	200	400	600	MCW	MILK	SS	CW	EMA	RIB	RUMP	RBV	IMF
EBVs	-0.3	+4.0	+28	+36	+48	+48	-2	+1.1	+27	+0.9	+1.5	+2.3	-0.6	+0.4
Accuracy	83%	95%	91%	90%	89%	79%	75%	65%	81%	66%	75%	75%	72%	68%

- ♂ MONTEREY EXCEPTIONAL (PB)
- ♂ MELALEUCA ARTILLARY A16 (PB)
- ♀ MELALEUCA ESMERELDA U65 (PB)
- WOODBOURN CHANOOKA D84 (IMP AUS) (PB)**
- ♂ MONTEREY TALENT SCOUT
- ♀ WOODBOURN MISS HEATHER Y6 (GR0)
- ♀ WOODBOURN MISS HEATHER V32 (GR0)

Chanooka has bred very well for us.

PERCENTILE BANDS

August 2022 Murray Grey GROUP BREEDPLAN - Percentile Bands for all 2020 born animals

Use this table as a guide to compare individual animals with the current genetic level of the breed

Percentile Bands for 2020 Born Calves																	
	CALVING EASE DIRECT	CALVING EASE DAUGHTERS	GESTATION LENGTH (DAYS)	BIRTH WT (KG)	200 DAY WT (KG)	400 DAY WT (KG)	600 DAY WT (KG)	MATURE COW WT (KG)	MILK (KG)	SCROTAL SIZE (CM)	DAYS TO CALVING (DAYS)	CARCASE WT (KG)	EMA (SQ CM)	RIB FAT (MM)	RUMP FAT (MM)	RETAIL BEEF YIELD (%)	IMF (%)
Top 1%	+4.5	+3.4	-3.3	-0.3	+40	+64	+89	+96	+10	+1.9	-4.4	+58	+3.8	+1.4	+2.0	+2.4	+1.3
Top 5%	+2.7	+2.3	-2.4	+1.0	+35	+57	+79	+84	+8	+1.5	-3.5	+51	+3.1	+0.8	+1.2	+2.0	+0.8
Top 10%	+1.9	+1.6	-2.0	+1.6	+33	+52	+74	+78	+7	+1.3	-3.2	+48	+2.8	+0.6	+0.8	+1.8	+0.6
Top 15%	+1.2	+1.3	-1.7	+2.0	+31	+50	+70	+74	+7	+1.2	-2.9	+45	+2.5	+0.4	+0.6	+1.7	+0.5
Top 20%	+0.8	+1.0	-1.5	+2.3	+30	+48	+68	+71	+6	+1.1	-2.7	+43	+2.3	+0.3	+0.4	+1.5	+0.3
Top 25%	+0.4	+0.7	-1.3	+2.6	+29	+46	+65	+68	+6	+1.0	-2.5	+42	+2.2	+0.2	+0.3	+1.4	+0.3
Top 30%	+0.2	+0.5	-1.2	+2.8	+28	+45	+63	+66	+5	+0.9	-2.4	+40	+2.1	+0.1	+0.2	+1.3	+0.2
Top 35%	-0.1	+0.4	-1.1	+3.0	+27	+43	+61	+64	+5	+0.8	-2.2	+39	+2.0	+0.0	+0.1	+1.2	+0.1
Top 40%	-0.4	+0.2	-0.9	+3.2	+26	+42	+59	+62	+4	+0.7	-2.1	+38	+1.9	-0.1	+0.0	+1.1	+0.1
Top 45%	-0.6	+0.0	-0.8	+3.4	+25	+40	+57	+60	+4	+0.7	-2.0	+36	+1.8	-0.1	-0.1	+1.0	+0.0
Top 50%	-0.9	-0.1	-0.7	+3.6	+24	+39	+55	+57	+4	+0.6	-1.8	+35	+1.7	-0.2	-0.2	+0.9	+0.0
Top 55%	-1.2	-0.3	-0.6	+3.8	+23	+37	+53	+55	+4	+0.5	-1.7	+33	+1.6	-0.3	-0.4	+0.9	+0.0
Top 60%	-1.4	-0.4	-0.4	+4.0	+22	+35	+50	+52	+3	+0.4	-1.6	+32	+1.5	-0.4	-0.5	+0.8	-0.1
Top 65%	-1.7	-0.6	-0.3	+4.2	+21	+33	+48	+49	+3	+0.3	-1.4	+30	+1.4	-0.4	-0.6	+0.7	-0.1
Top 70%	-2.0	-0.7	-0.2	+4.4	+20	+32	+45	+46	+3	+0.3	-1.3	+28	+1.3	-0.5	-0.7	+0.6	-0.2
Top 75%	-2.3	-0.9	-0.1	+4.5	+19	+30	+42	+43	+2	+0.2	-1.2	+26	+1.1	-0.6	-0.8	+0.5	-0.2
Top 80%	-2.7	-1.1	+0.1	+4.7	+17	+27	+39	+40	+2	+0.1	-1.0	+24	+1.0	-0.7	-0.9	+0.4	-0.3
Top 85%	-3.2	-1.3	+0.3	+5.0	+16	+25	+36	+36	+2	-0.1	-0.9	+21	+0.8	-0.8	-1.1	+0.3	-0.3
Top 90%	-3.8	-1.6	+0.5	+5.3	+14	+22	+31	+31	+1	-0.2	-0.7	+18	+0.7	-0.9	-1.3	+0.1	-0.4
Top 95%	-4.7	-2.0	+0.7	+5.9	+11	+17	+25	+25	+0	-0.4	-0.4	+14	+0.5	-1.1	-1.6	-0.1	-0.5
Top 99%	-7.4	-2.8	+1.3	+7.4	+6	+9	+15	+14	-2	-0.7	+0.1	+8	+0.1	-1.5	-2.1	-0.5	-0.7



21

PREMIER GLENFIDDICH S79 (PB)

ID: 2615210079

Colour: Silver

DOB: 29/08/21

♂ OAKVIEW S EMPEROR 301 (PB)

♂ OAKVIEW EMPEROR P7 (PB)

♀ OAKVIEW ODETTE 11 (PB) (ET)

PREMIER GLENFIDDICH S79 (PB)

♂ OAKVIEW S EMPEROR 301 (PB)

♀ OAKVIEW JANINE P2 (PB)

♀ ANIWANAWA JANINE E266 (PB)

RAW DATA

Birth Weight	25/01/2022 Weight	29/08/2022 Weight
34 kgs.	215 kgs.	390 kgs.

Glenfiddich S79 will have plenty of admirers on sale day. A very complete bull with great structure and carcass.

AUGUST 2022 MURRAY GREY BREEDPLAN

	GL	BW	200	400	600	MCW	MILK	SS	CW	EMA	RIB	RUMP	RBY	IMF
EBVs	-0.7	+1.1	+12	+14	+24	+25	-1	--	+15	--	+0.2	+0.3	--	--
Accuracy	37%	72%	56%	52%	52%	39%	33%		36%		25%	25%		

PURCHASER

PRICE



22

PREMIER ICE EDITION S76 (PB)

ID: 2615210076

Colour: Silver

DOB: 14/08/21

♂ SOUTHEND BRAVEHEART (PB)

♂ SOUTHEND EMPEROR (PB)

♀ SOUTHEND B-GREYGOWN (PB)

PREMIER ICE EDITION S76 (PB)

♂ OAKVIEW 114 (PB)

♀ OAKVIEW DOLLY 401 (PB)

♀ ANIWANAWA DOLLY G310 (PB)

RAW DATA

Birth Weight	25/01/2022 Weight	29/08/2022 Weight
40 kgs.	263 kgs.	434 kgs.

If you want a performance bull that will produce bigger framed progeny Ice Edition needs to be considered. His dam has the unique combination of power and maternal strength.

AUGUST 2022 MURRAY GREY BREEDPLAN

	GL	BW	200	400	600	MCW	MILK	SS	CW	EMA	RIB	RUMP	RBY	IMF
EBVs	-0.3	+3.9	+24	+33	+38	+34	-1	-0.4	+24	+0.7	+0.1	+0.1	+0.4	-0.2
Accuracy	54%	74%	65%	60%	60%	51%	46%	42%	48%	35%	42%	42%	39%	36%

PURCHASER

PRICE



23

PREMIER GLEN MORANGIE S84 (PB)

ID: 2615210084

Colour: Silver

DOB: 22/09/21

♂ OAKVIEW S EMPEROR 301 (PB)

♂ OAKVIEW EMPEROR P7 (PB)

♀ OAKVIEW ODETTE 11 (PB) (ET)

PREMIER GLEN MORANGIE S84 (PB)

♂ OAKVIEW NAVIGATOR 412 (PB)

♀ OAKVIEW CLEOPATRA P14 (PB)

♀ OAKVIEW CLEOPATRA 214 (PB)

RAW DATA

Birth Weight	25/01/2022 Weight	29/08/2022 Weight
35 kgs.	166 kgs.	326 kgs.

So much to like about this young bull, easy keeping and very well structured. His dam is an outstanding young cow from a leading cow family.

AUGUST 2022 MURRAY GREY BREEDPLAN

	GL	BW	200	400	600	MCW	MILK	SS	CW	EMA	RIB	RUMP	RBV	IMF
EBVs	-0.6	+1.4	+15	+22	+30	+29	+0	+0.3	+20	--	+0.4	+0.6	+0.2	--
Accuracy	36%	71%	56%	51%	51%	38%	31%	27%	36%		28%	28%	25%	

PURCHASER

PRICE



24

PREMIER BALVENIE S78 (PB)

ID: 2615210078

Colour: Silver

DOB: 17/08/21

♂ MELALEUCA ARTILLARY A16 (PB)

♂ WOODBOURN CHANOOKA D84 (IMP AUS) (PB)

♀ WOODBOURN MISS HEATHER Y6 (GRO)

PREMIER BALVENIE S78 (PB)

♂ OAKVIEW S EMPEROR 301 (PB)

♀ OAKVIEW JANINE P3 (PB)

♀ OAKVIEW JANINE 404 (PB)

RAW DATA

Birth Weight	25/01/2022 Weight	29/08/2022 Weight
39 kgs.	222 kgs.	352 kgs.

Clean fronted bull with a top dam and grandam.

AUGUST 2022 MURRAY GREY BREEDPLAN

	GL	BW	200	400	600	MCW	MILK	SS	CW	EMA	RIB	RUMP	RBY	IMF
EBVs	+0.0	+3.7	+24	+30	+41	+41	-1	+0.6	+23	+0.7	+0.9	+1.4	-0.2	+0.2
Accuracy	57%	75%	64%	60%	60%	49%	42%	37%	47%	36%	42%	42%	40%	37%

PURCHASER

PRICE



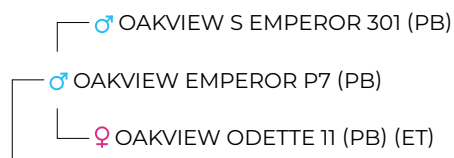
25

PREMIER GLEN DRONACH S83 (PB)

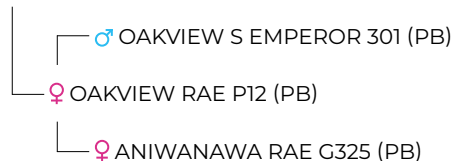
ID: 2615210083

Colour: Silver

DOB: 11/09/21



PREMIER GLEN DRONACH S83 (PB)



RAW DATA

Birth Weight	25/01/2022 Weight	29/08/2022 Weight
36 kgs.	158 kgs.	286 kgs.

A later born bull, moderate framed with great structure, A pedigree that feature a number of the top performers used in the Oakview program.

AUGUST 2022 MURRAY GREY BREEDPLAN

	GL	BW	200	400	600	MCW	MILK	SS	CW	EMA	RIB	RUMP	RBV	IMF
EBVs	-0.5	+1.7	+14	+16	+27	+28	-1	-0.1	+16	--	+0.1	+0.2	--	--
Accuracy	37%	72%	56%	52%	52%	39%	32%	25%	36%		25%	25%		

PURCHASER

PRICE

YOU CAN RELY ON FMG TO STAND BY YOU. LITERALLY.



A bull is a big investment. Which is why FMG is right there with you to ensure you get the very best cover on sale day, and the best service every day after that. That's because we understand livestock insurance as much as we understand the importance of personal service. So talk to your FMG Rural Manager about FMG Premier Bull Sales cover. All bulls sold at auction up to \$50,000 can be covered for 6.5% of the purchase price and those sold at FMG Premier Bull Sales are insured at the fall of the hammer for 14 days free.* To find out more, call us on 0800 366 466 or visit fmg.co.nz/bulls

* Subject to standard underwriting criteria. Please note this is only a summary of FMG products and services and is subject to our specific product documentation. For full details, refer to the relevant policy wordings at fmg.co.nz

We're here for the good of the country.

FMG
Advice & Insurance

Instant livestock cover



FMG Instant Livestock Cover provides short term, non-renewing cover for your specified animal(s) for death or infertility as a result of accident, disease or illness.*

Your animal's age and value

Any animals covered under this policy must be fit for purpose, in sound health and to qualify for automatic underwriting, be purchased for less than \$50,000 each.

Animal: Bull, ram and cow/heifer
Age Limit: Between 6 months and 5 years
Animal: Stag
Age Limit: Between 3 months and 12 years

During the period of insurance, the specified animal is covered for

- Theft.
- Death caused by an accident, disease or illness.
- Bulls, rams, stags and machos: Infertility—intentional slaughter because the animal

becomes infertile through accident, disease or illness, and provided that the animal has been infertile for more than 90 days, or the vet has certified that the animal is permanently infertile.*

You are automatically covered for

- Up to \$500 for the reasonable vet fees you incur for treatment of injury or treatment administered to prevent the death of your specified animal, whether or not death occurred.
- Up to \$2,500 for the reasonable cost you incur to remove the carcass of the specified animal.

You also have the optional cover for

Your specified stags to be covered for death as a direct result of hard antler or velvet removal.

Period of cover options

- 30 days.
- Up to 3 months.
- Between 3-6 months.
- Between 6-12 months.

You can also insure your livestock on an ongoing basis under our Livestock policy.

What we will pay

Fair market value of your specified animal, less any amount you receive for the sale of the carcass, up to the amount shown on the insurance certificate.

*Please note that infertility cover is not available for cows/heifers.

Instant livestock cover**

Please fill in this form as soon as you have purchased your new animal(s).

Purchaser name:		FMG Client Account Number:	
Owner name (if purchasing on behalf of):		Owners DOB:* / /	
Sale name:			
Address:			
Email:	Phone:	Mobile:	

Section A (Please complete section A and section B for each animal purchased)

Type of male animal to be covered (infertility included): Bull Ram Stag Macho Hard antler and velvet removal:

Type of female animal to be covered: Cow/Heifer Ewe Hind Hembra

Date of purchase:	Date of birth:	Price at purchase (excl. GST):	Animal name/Tag no.

Section B

Breed:	How was animal purchased? i.e. auction, private sale etc.	Length of cover required			
		30 days	Up to 3 months	Between 3-6 months	Between 6-12 months
		<input type="checkbox"/>	<input type="checkbox"/>	<input type="checkbox"/>	<input type="checkbox"/>
		<input type="checkbox"/>	<input type="checkbox"/>	<input type="checkbox"/>	<input type="checkbox"/>
		<input type="checkbox"/>	<input type="checkbox"/>	<input type="checkbox"/>	<input type="checkbox"/>

Please select your payment method: FMG direct: Farmlands

Agent name and company:

Phone:

**Conditions of acceptance

Conditions of acceptance Please refer above for applicable age limits and maximum values. If your animal is outside these ranges, contact FMG on 0800 366 466 for further options. Acceptance of cover is conditional on this fully completed form being received by FMG within 10 days of purchase and standard FMG underwriting criteria being met. For full details of the cover, you should refer to our Livestock policy document which is available on our website www.fmg.co.nz or by calling 0800 366 466. If you would like a renewing cover rather than a short term lapsing policy or would like a death only policy, please contact FMG on 0800 366 466 for a quote. Please note, renewing cover can only be offered to existing FMG clients. Hard antler and velvet removal is an optional benefit that needs to be purchased in addition to your standard insurance cover.

Please complete this form and return within 10 days by
Email: businesssupport@fmg.co.nz
Post: FMG, PO Box 2141, Christchurch 8140, Attn: Business Support.



THE POWER OF PREMIER

PASSION, PERFORMANCE, PERFECTION!



Females & Genetics
March 2024

PREMIER
— CATTLE CO. —

Speckle Park & Murray Grey Bull Sale

• 29TH SEPTEMBER 2022 •

400 Brunskill Road, Cambridge

